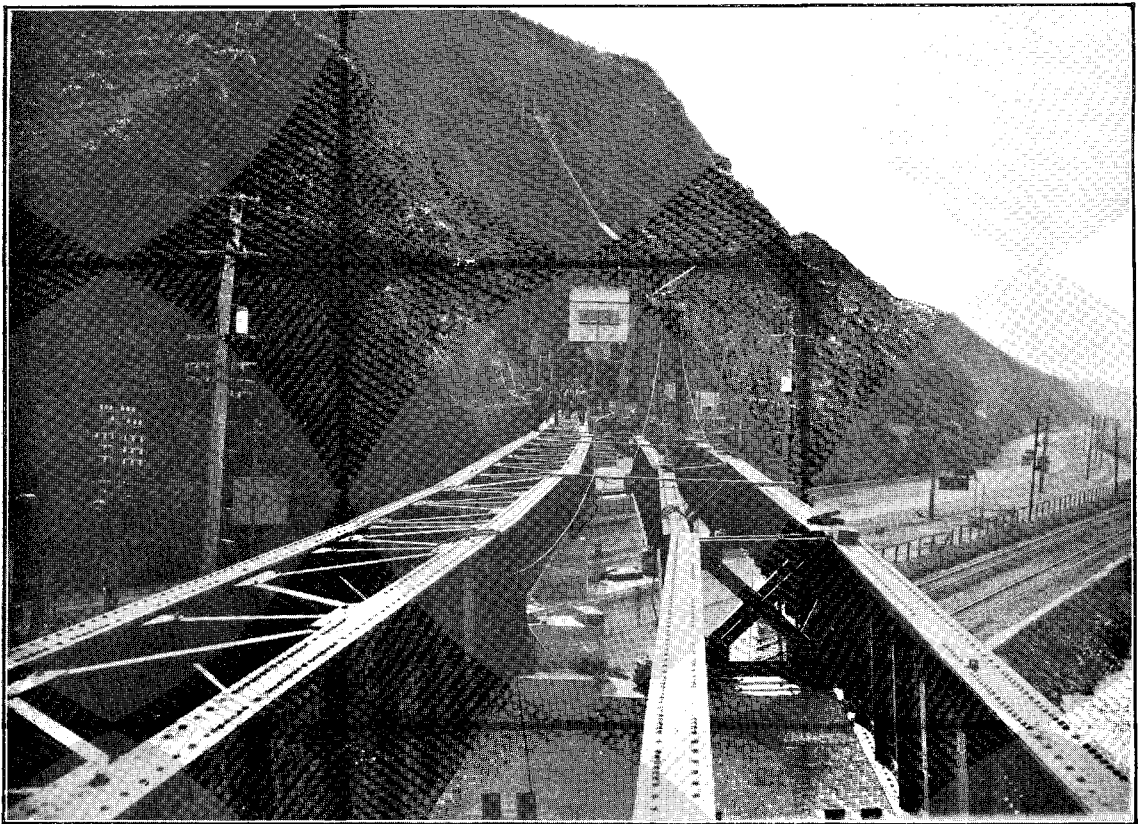
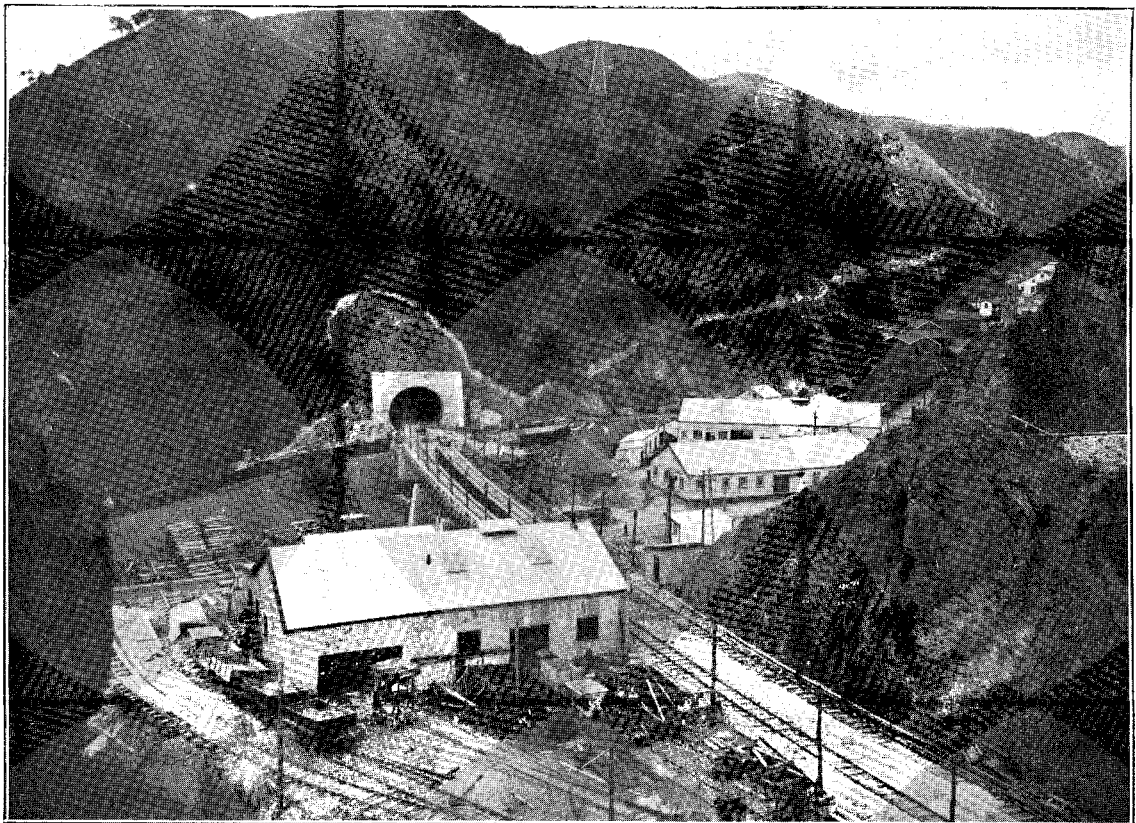


D.—1.



SOUTH PORTAL OF NO. 1 TUNNEL AND BRIDGE UNDER CONSTRUCTION OVER HUTT ROAD AND RAILWAY.



NORTH PORTAL OF NO. 1 TUNNEL, HEADQUARTERS, STORES, WORKSHOPS, ETC.  
WELLINGTON—NEW PLYMOUTH RAILWAY.—TAWA FLAT DEVIATION.