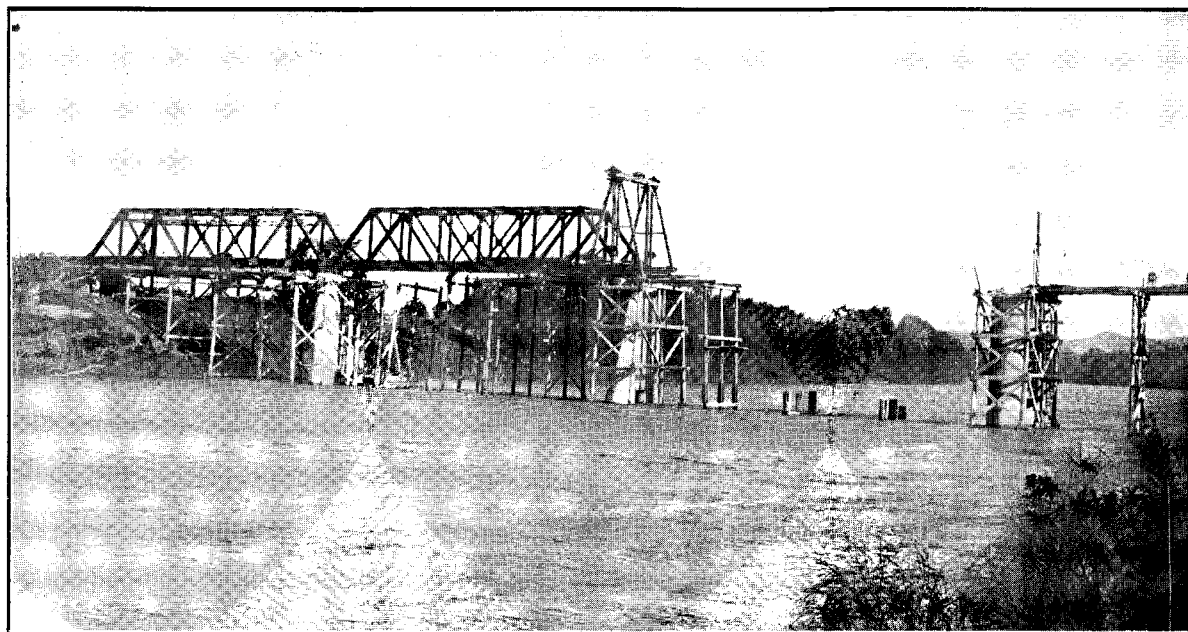
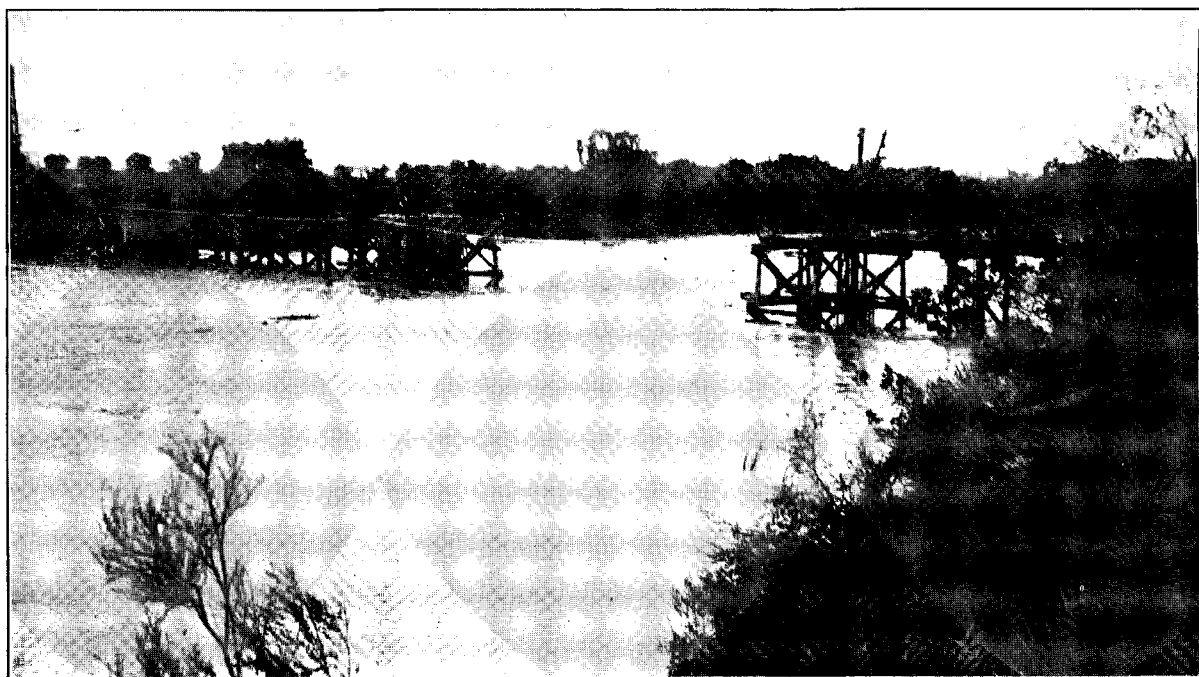


D.—1.



WAIROA RIVER RAILWAY-BRIDGE UNDER CONSTRUCTION.
Four 105 ft. steel through trusses, and two 15 ft. rolled-steel joist spans.



WAIROA RIVER RAILWAY-BRIDGE UNDER CONSTRUCTION.
False work of one span washed away by flood.

NAPIER-GISBORNE RAILWAY.