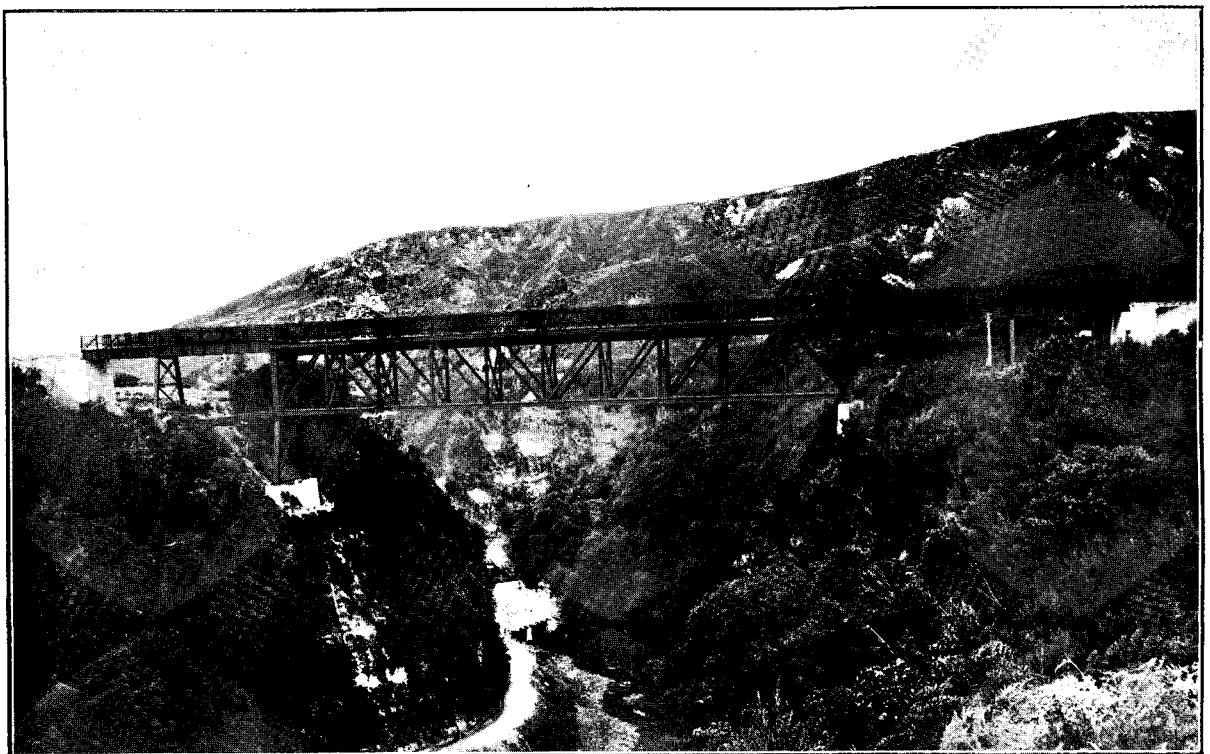




RAEKOHUA STREAM BRIDGE AT 49 M. 16 CH.
One 60 ft., two 40 ft., one 30 ft., and one 25 ft. spans.
STRATFORD - MAIN TRUNK RAILWAY.—WEST END.



MATAHOURA VIADUCT.
One 250 ft., two 60 ft., and two 40 ft. spans.
NAPIER-GISBORNE RAILWAY.