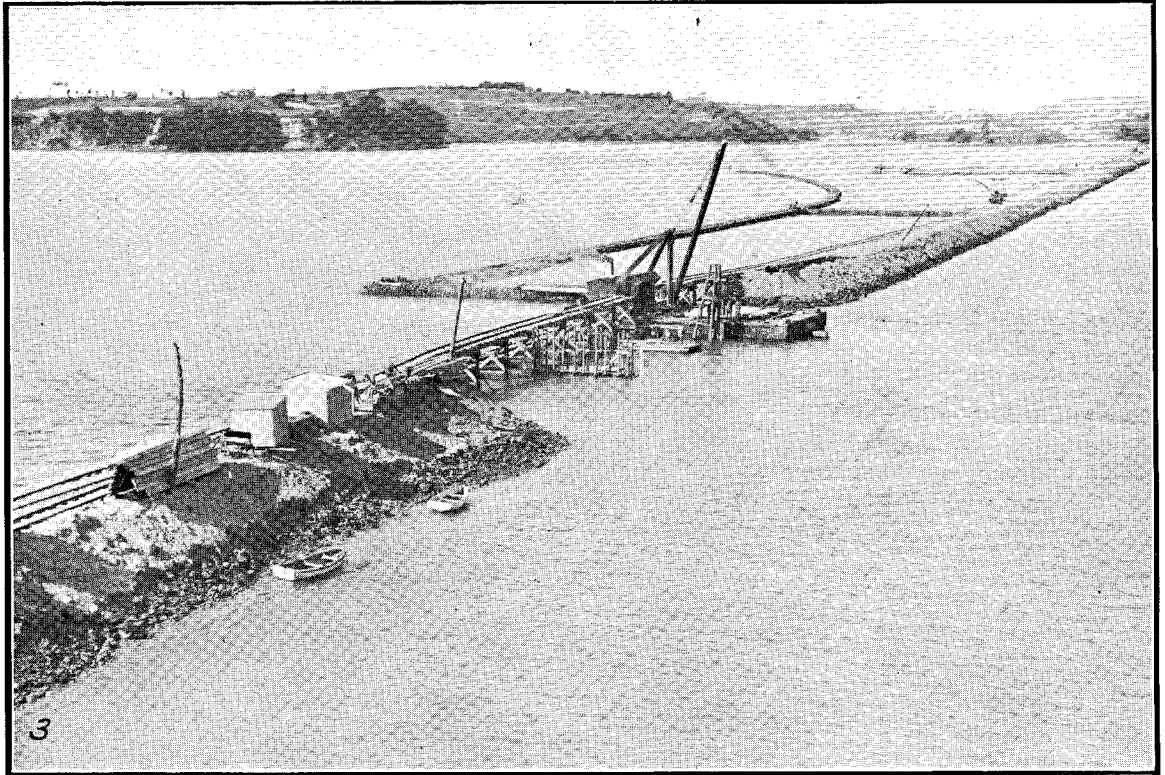


D.—1.



EMBANKMENT ACROSS HOBSON BAY AND BRIDGE NO. 1.  
Showing also stone protection for construction of new waterfront road to Orakei.



CUTTING AND EMBANKMENT AT CAMPBELL'S POINT.  
Orakei waterfront road on left.

AUCKLAND-WESTFIELD RAILWAY.