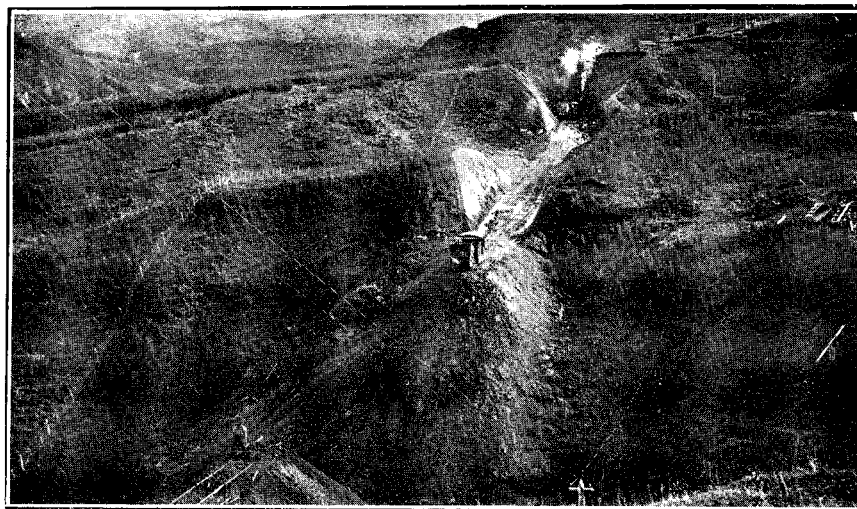
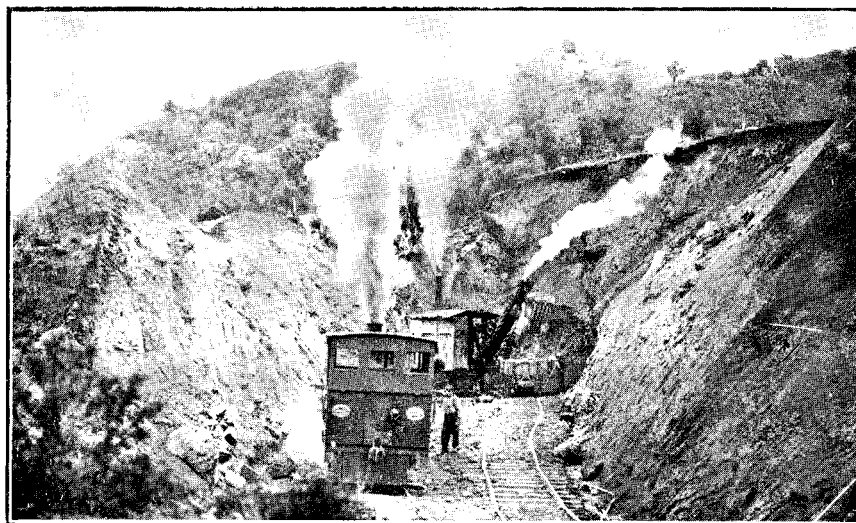


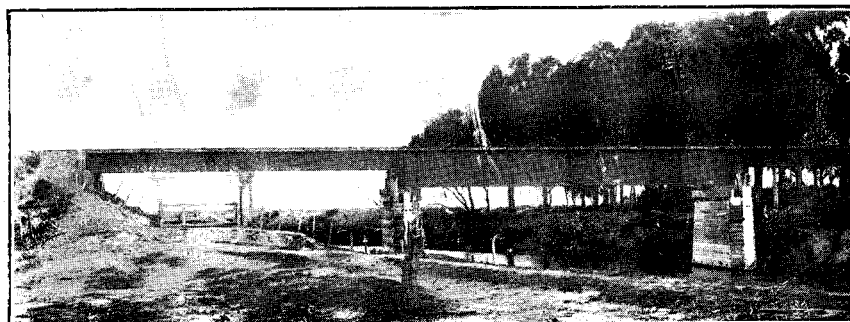
EAST COAST MAIN TRUNK RAILWAY, RANGITAIKI SECTION : RANGITAIKI RIVER BRIDGE
AT 87 M. 77 CH.



NAPIER-WAIROA RAILWAY, TUTIRA SECTION : VIEW AT 19 M., LOOKING NORTHWARDS.



NAPIER-WAIROA RAILWAY, TUTIRA SECTION : STEAM SHOVEL AND LOCOMOTIVE
AT 19 M. 70 CH.



NAPIER-WAIROA RAILWAY, WAIKOKOPU BRANCH : TAHAENUI BRIDGE AT 13 M. 62 CH.