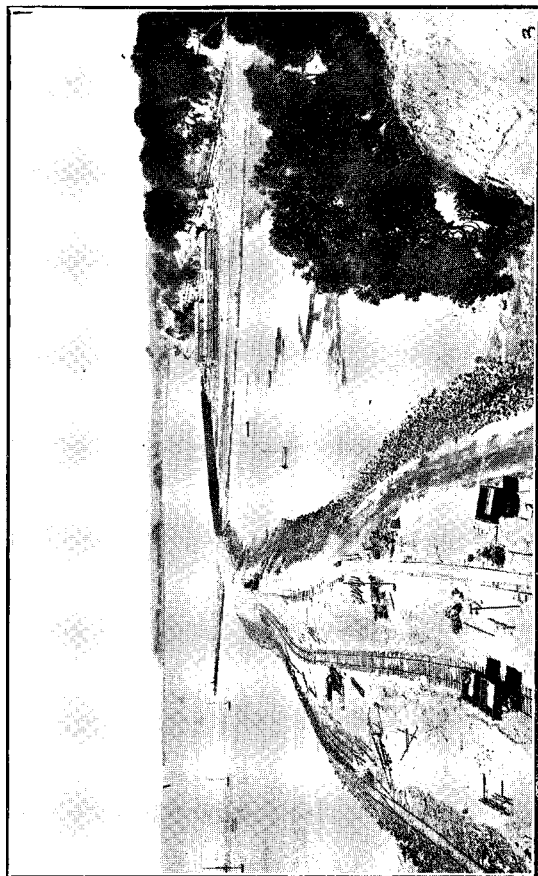
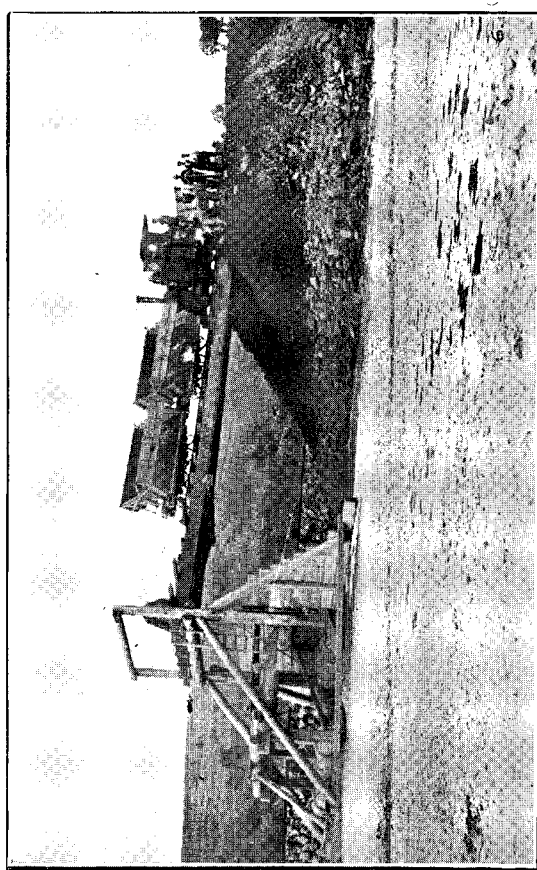


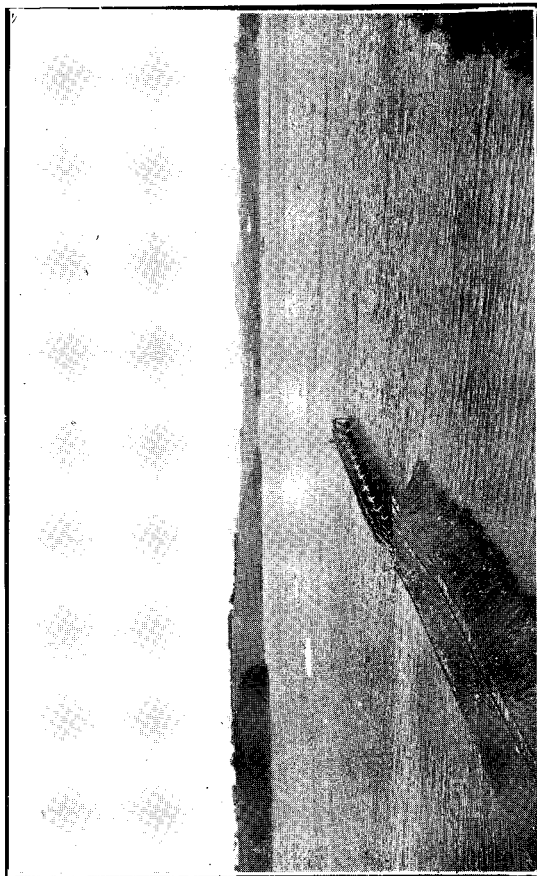
EXCAVATION FOR ORAKEI STATION-YARD AT 2 M. 60 CH.
Cutting 132 ft. wide, 70 ft. deep; 200,000 cub. yd.



FORMATION AND STONE PROTECTIVE WORK AT SOUTH END OF NEW AUCKLAND
STATION-YARD



MOVABLE TRESTLE FOR HOBSON BAY EMBANKMENT.
AUCKLAND - WESTFIELD RAILWAY.



HOBSON BAY EMBANKMENT AND TEMPORARY BRIDGE.

AUCKLAND - WESTFIELD RAILWAY.