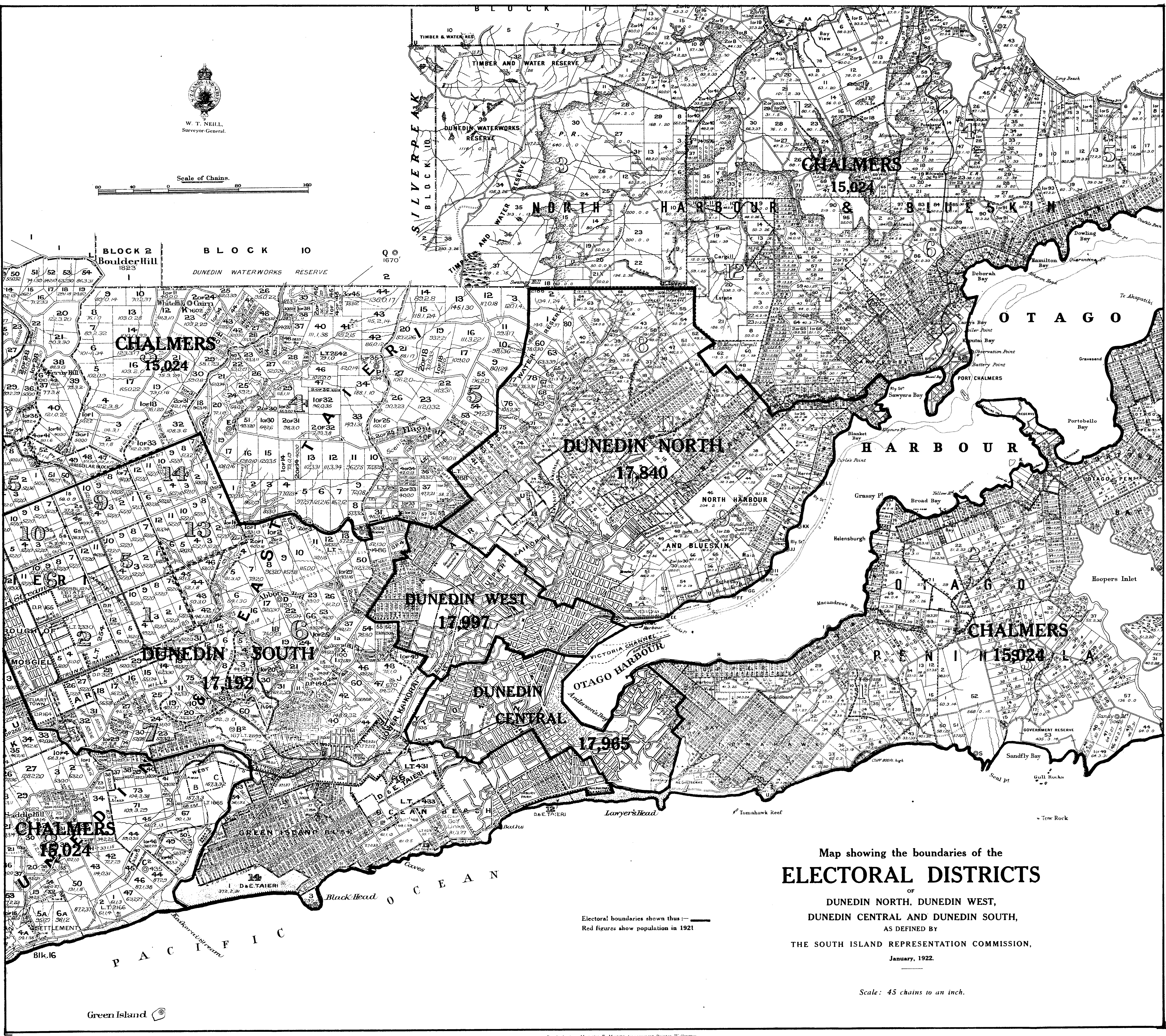




Scale of Chains.



Map showing the boundaries of the ELECTORAL DISTRICTS

OF DUNEDIN NORTH, DUNEDIN WEST, DUNEDIN CENTRAL AND DUNEDIN SOUTH, AS DEFINED BY

THE SOUTH ISLAND REPRESENTATION COMMISSION,

January, 1922.

Electoral boundaries shown thus: —
Red figures show population in 1921

Scale: 45 chains to an inch.