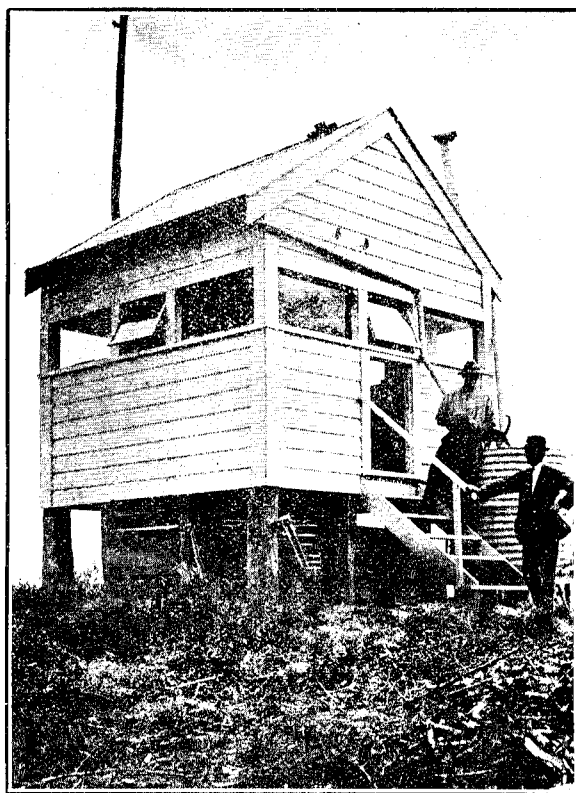


undertaken and accomplished during the year. These buildings, erected to a standard, are 12 ft. by 12 ft. in dimensions, very stoutly built, and with a heavy glass window the full length of each side to afford an uninterrupted vision in all directions. Each station is connected by telephone to the various ranger stations, so that an outbreak of fire can be promptly reported in its incipient stages. The inauguration of the lookout has relieved the responsible officers of much of the anxiety which commonly exists during the fire season. The system marks a distinct advance in fire-protective measures, as it not only ensures promptness in dealing with a dangerous outbreak, but it enables a fire to be localized, and saves time in investigating an outbreak which is too far away to be of any danger to the plantation. The fire-breaks have all been put into a very efficient state by burning off wide strips outside the plantation boundaries, and thus securing a safety-zone which will be efficient for twelve months.

#### SALE OF TREES AND TREE-SEEDS.

During the season there was a large demand for trees and seeds. Eucalypts for the production of fencing-timber, &c., and *Pinus insignis* for shelter were the principal requirements. It is evident the Service is filling a long-felt want, and is giving satisfaction. Orders for trees to the number of 788 were filled to farmers, public bodies, School Committees, and soldier settlers, totalling 627,950 trees. For tree-seeds 448 orders were received, the amount sold being 409½ lb., valued at £370 16s. 7d. A large portion of the seed went to the Hawke's Bay District, and to places



[Govt. Publicity, photo.]

#### GUARDING THE STATE FORESTS FROM FIRE: ONE OF THE LOOKOUT STATIONS IN THE ROTORUA REGION.

where it is difficult to forward young trees. The number of letters, packets of seed, advice-cards, and price-lists sent out in connection with the sale of trees and seeds during the year numbered 7,161, the letters of advice upon tree-planting being a particularly heavy item. Many letters in appreciation of the quality of the stock sold were received, and also a considerable number of offers of assistance in the matter of distributing price-lists, &c., from storekeepers, dairy companies, Postmasters, school officials, Stock Inspectors, and private persons. These offers were mostly spontaneous, and indicate to some extent the widespread interest which exists at present for forestry. To the circulars sent out to public bodies a large number of favourable replies were received, and there is no doubt that considerable planting will be done by municipalities, Harbour Boards, &c., in the near future. Many of them are at present hampered by financial difficulties, and others have practically no reserves or places to plant up, and no funds to purchase land. The posters exhibited in the post-offices, leaflets, and the advertisements in the *Agricultural Journal* have elicited a very large number of inquiries for price-lists and information regarding tree-planting. It is also evident from correspondence received that a large proportion of farmers had no knowledge of the existence of this branch of the Department's work, and a very considerable increase in the number of trees sent out can be confidently expected.