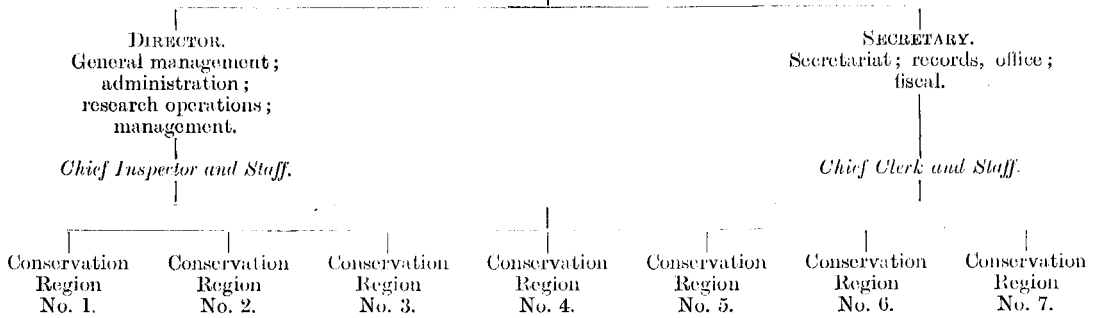


PLAN NO. 2.—ALTERNATIVE ORGANIZATION FOR THE NEW ZEALAND FOREST SERVICE.

FOREST COMMISSION.

(Minister; Director; Secretary; timber-manufacturer; forest labour; consumer.)



PLAN NO. 3.—ORGANIZATION FOR THE NEW ZEALAND FOREST SERVICE.

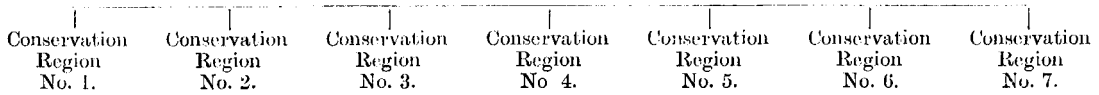
(Suggested in part by the Royal Commission on Forestry, 1913.)

MINISTER IN CHARGE.

SECRETARY.

General management, administration,  
finance, &c.

*Advisory Board of Forest Experts.*  
(Director, Chief Inspector, &c.)  
Advisory, consultative;  
no executive authority.

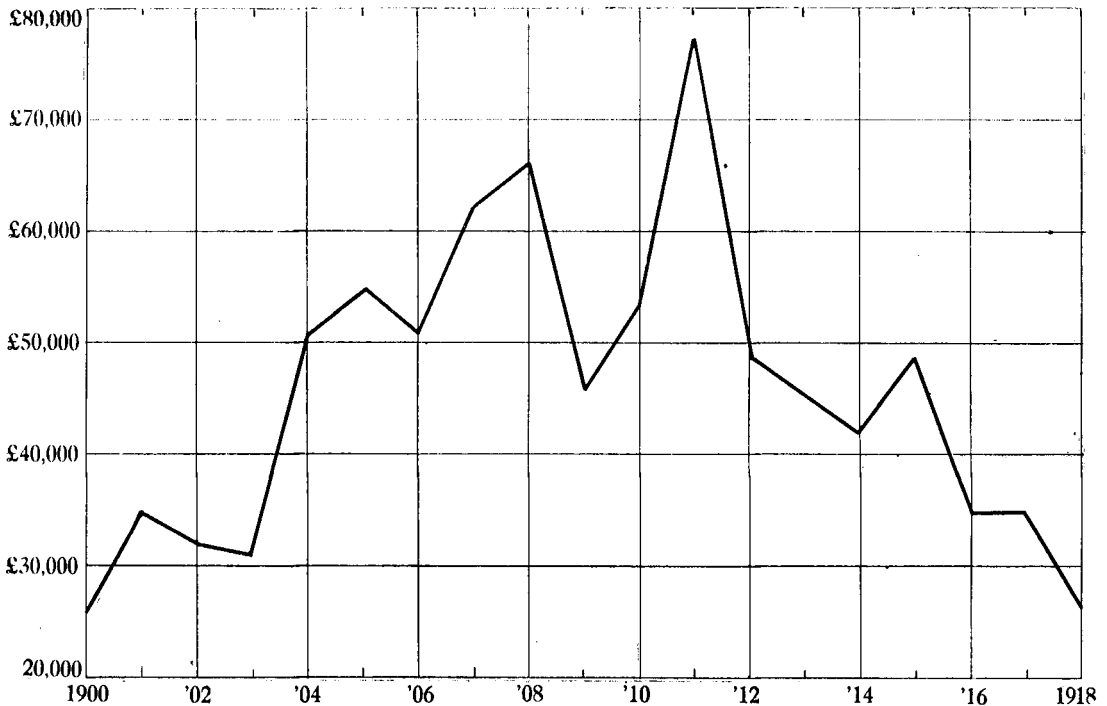


FOREST FINANCE.

**Critical Formative Period.**

Adequate financial arrangements should be provided over a period of years if the management of the Dominion's forests is to be placed on a sound footing, and the capital investment of the undertaking should be ample and maintained at that standard necessitated by the expansion of operations.

Continuity is vital during the early and critical period of organization of the Forest Service, for during the first five-year period the foundation will be laid, and from it will evolve the definite success or failure of forestry in New Zealand.



TIMBER REVENUES OF NEW ZEALAND.