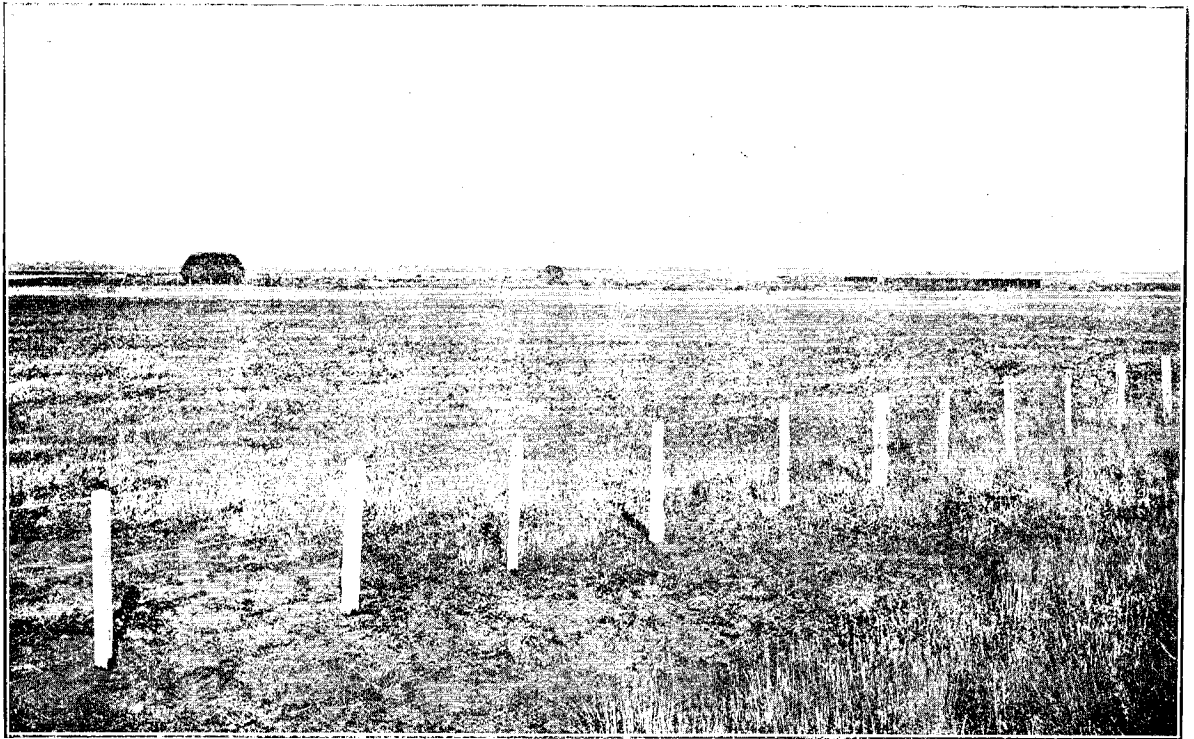
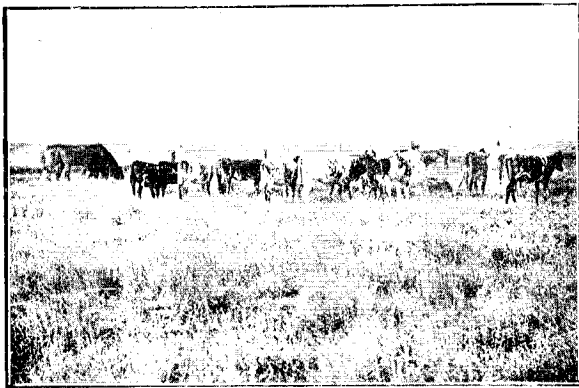


INVERCARGILL BOBSTAL INSTITUTION.

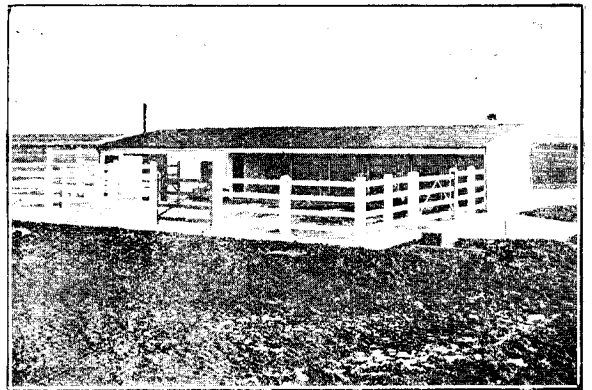


ANOTHER SECTION OF THE WAIHOPAI ESTUARY.

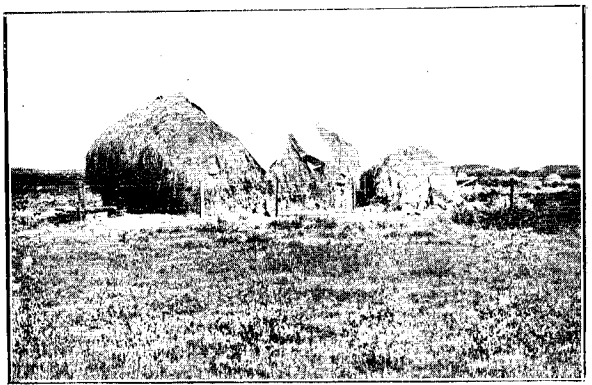
Brought into cultivation since the embankments have been completed and the water shut off.



PART OF THE DAIRY HERD.



CONCRETE MILKING-SHED, DAIRY BUILDINGS, AND YARDS.



FIRST HAY CROP ON FIRST SECTION, UNWATERED.
(Ten months after surface-sowing on burnt waewae banks.)