

1915.  
NEW ZEALAND.

---

TOURIST AND HEALTH RESORTS DEPARTMENT

(ANNUAL REPORT OF THE),

BY THE MINISTER OF TOURIST AND HEALTH RESORTS, HON. R. HEATON RHODES.

---

*Presented to both Houses of the General Assembly by Command of His Excellency.*

---

The MINISTER IN CHARGE OF TOURIST AND HEALTH RESORTS DEPARTMENT to His Excellency the GOVERNOR.

MY LORD,—

Wellington, 8th June, 1915.

I have the honour to submit to Your Excellency the report of the Department of Tourist and Health Resorts for the year ended the 31st March, 1915.

I have, &c.,

R. HEATON RHODES,

Minister of Tourist and Health Resorts.

His Excellency the Governor of New Zealand.

---

ANNUAL REPORT OF THE GENERAL MANAGER OF TOURIST AND HEALTH RESORTS.

SIR,—

Wellington, 8th June, 1915.

I have the honour to submit herewith my report for the year ended the 31st March, 1915.

I have, &c.,

B. M. WILSON,

General Manager.

The Hon. R. Heaton Rhodes, Minister of Tourist and Health Resorts.

---

It might naturally be expected that the world-wide war now raging would cause an almost absolute cessation of tourist traffic to and within New Zealand. It has certainly for the time stopped nearly all traffic from overseas, but the fact that the revenue of the Department from all sources compares favourably with other normal years goes to show that, despite the many heavy calls on them in other respects, the people of New Zealand have still largely availed themselves of the opportunities placed in their way of visiting and enjoying the scenic attractions and health resorts of New Zealand. The decision of the Union Steamship Company to curtail the service between Melbourne and the Bluff has also had a detrimental effect on the Australian traffic. In place of a weekly steamer there is now only a three-weekly service.

The actual revenue for the year was £26,630, a decrease of £3,477 compared with the previous season—£30,107.

The following statement gives in detail the revenue at the different resorts during the past two years, and the financial position of each :—

RECEIPTS FOR DEPARTMENT OF TOURIST AND HEALTH RESORTS, FINANCIAL YEARS 1913-14 AND 1914-15.

	1914-15.	1913-14.
	£	£
<b>Te Aroha—</b>		
Bath fees, &c. .. .. .	834	936
Games, library fees, &c. .. .. .	235	202
Tea-kiosk .. .. .	147	121
Miscellaneous .. .. .	101	80
	<u>1,317</u>	<u>1,339</u>
<b>Rotorua—</b>		
Sanatorium fees .. .. .	1,812	2,020
Out-patients' fees .. .. .	531	407
Bath fees, pump-room, &c. .. .. .	2,165	2,446
Dry massage and electrical treatment .. .. .	595	632
Water-supply .. .. .	1,496	1,540
Electric-light charges .. .. .	3,418	3,237
Games, &c. .. .. .	414	424
Round trip : launch fares, guiding-fees, &c. .. .. .	2,436	2,957
Sale of mineral waters .. .. .	206	172
Launch licenses, wharfages, &c. .. .. .	16	54
Sulphur royalties .. .. .	..	177
Sales of old electrical plant .. .. .	..	224
Rents .. .. .	402	461
Miscellaneous .. .. .	89	177
Trout-fishing and game-shooting fees .. .. .	851	1,261
	<u>14,431</u>	<u>16,189</u>
<b>Waitomo Caves—</b>		
Accommodation and admission charges, &c. .. .. .	3,503	3,775
<b>Hanmer Springs—</b>		
Sanatorium fees (building destroyed by fire) .. .. .	674	1,218
Bath fees, &c. .. .. .	486	449
Tennis-players, &c. .. .. .	74	82
Tea-house .. .. .	156	156
Water-supply .. .. .	54	85
Rents .. .. .	82	71
Miscellaneous .. .. .	48	27
	<u>1,574</u>	<u>2,088</u>
<b>Hermitage—</b>		
Accommodation and guiding, &c. .. .. .	3,015	2,853
<b>Queenstown Park—</b>		
Games, &c. .. .. .	123	81
<b>Glade House, Milford Track, and Te Anau steamer—</b>		
Accommodation, guiding, &c. .. .. .	587	721
Steamer .. .. .	199	486
	<u>786</u>	<u>1,207</u>
<b>Head Office—</b>		
Sale of pamphlets, photographs, &c. .. .. .	76	133
Advertising .. .. .	91	185
Rents .. .. .	208	219
Commission on passenger bookings .. .. .	1,498	1,962
Miscellaneous .. .. .	8	68
	<u>1,881</u>	<u>2,567</u>
	<u>£26,630</u>	<u>£30,107</u>

## SCHEDULE SHOWING FINANCIAL POSITION AT EACH RESORT.

Resort.	Year 1913-14.				Year 1914-15.			
	Receipts.	Expenditure.	Excess of Expenditure over Receipts.	Excess of Receipts over Expenditure.	Receipts.	Expenditure.	Excess of Expenditure over Receipts.	Excess of Receipts over Expenditure.
	£	£	£	£	£	£	£	£
Te Aroha .. .. .	1,339	2,574	1,235	..	1,317	2,572	..	1,255
Rotorua .. .. .	14,928	19,253	4,325	..	13,580	19,461	5,881	..
Rotorua Acclimatization District	1,261	645	..	616	851	369	..	482
Waitomo Caves .. .. .	3,775	2,408	..	1,367	3,503	3,056	..	447
Hammer Springs .. .. .	2,088	3,929	1,841	..	1,574	4,072	2,498	..
Hermitage, Mount Cook .. .. .	2,853	2,928	75	..	3,015	3,220	205	..
Te Anau and Manapouri steamers, Glade House and Milford Track	1,207	2,387	1,180	..	786	1,962	1,176	..
Queenstown .. .. .	81	515	434	..	123	587	464	..

NOTE.—No allowance is made in these figures for interest on capital expenditure or for depreciation of plant or buildings.

The expenditure during the year amounted to £49,823, against £48,462 for the previous year, an increase of £1,361.

Following is a brief summary of the work carried out at each resort during the year, viz. :—

## HELENSVILLE.

Considerable improvements have been made at this resort. A new bath-building has been erected with sixteen baths in accordance with the scheme recommended by the Government Balneologist. The bowling, tennis, and croquet lawns have also been brought into first-class condition. The work has been carried out by the local Domain Board.

## ROTORUA SANATORIUM AND BATHS.

The revenue derived from the sanatorium and baths during the year was £5,103, compared with £5,505 for the previous year, a decrease of £402, caused without doubt by the failure of overseas traffic, as the local traffic appeared hardly to be affected. Various improvements set out in the Balneologist's report have been made during the year, though naturally the full programme of projected additions and improvements has been curtailed or postponed.

## ROTORUA WATER-SUPPLY, ELECTRIC LIGHT, AND POWER SYSTEMS.

The receipts from the supply of electric energy to the town amounted to £3,418, against £3,237 for the former year, an increase of £171.

Sixty-two new consumers were added during the year, bringing the total number of consumers to 550. The additional consumers, together with those who have added extra lights, make a total number of lights added during the year of 445. The energy distributed to consumers during the year totals 242,397 units, being an increase of 50,737 units on the previous total.

That the plant at Okere Generating-station has been able to meet the increased demand is largely due to the additional meters installed, which have been effective in checking unnecessary consumption.

The total numbers of units generated at Okere and distributed from the substation at Rotorua were 345,333 and 302,636 respectively.

The Engineer's cottage at Okere, to replace the one destroyed by fire, has been completed, and is now occupied by the senior Shift Engineer.

The distribution-mains have been extended in the suburban area to provide for new consumers.

At the main baths a motor-generator set has been installed in connection with the high-frequency apparatus, which eliminates the time and labour necessary in the past to charge the accumulators.

A new ironing-machine electrically driven was imported for the laundry. It has been installed, and is working satisfactorily. A motor for the mineral-water pump was also installed, and has enabled a uniform pressure to be maintained.

## ROTORUA GARDENS AND RESERVES.

The gardens attached to the sanatorium grounds have been carefully attended to during the year, and, although the continual dry weather experienced during a portion of the year has been a deterring factor, the gardens and playing-grounds have been throughout in a generally satisfactory condition. The courts have been so fully occupied throughout the playing season that it has been found quite impossible to give any of them a much deserved rest, and arrangements have therefore been made for breaking in a large additional area behind the main building, which will provide an ideal playing-spot and relieve the congestion which at times has resulted.

The newly installed kitchen-garden has proved a great success—not only has the sanatorium been kept fully provided, but a large amount of vegetables, &c., has been sent to the hostelry at Waitomo Caves, resulting in considerable economy. Good work has also been done in clearing the Hamurana Reserve and the tracks along the river-bank, greatly to the appreciation of visiting anglers.

## ACCLIMATIZATION.

The trout-fishing generally in the Rotorua Acclimatization District has been good, and, although the average size of the fish has decreased somewhat, they are in much better condition.

The average weights for the three principal lakes are: Rotorua, 2 lb.; Tarawera, 6 lb.; and Taupo, 5 lb. The general level of the lakes has been lower this year than formerly, and consequently fly-fishers have been better able to fish the streams.

The supply, distribution, and liberation of trout-fry in this district has been carried out by the local officers of the Department of Internal Affairs. These have been distributed as follows: Te Whaiti, 40,000; Ruatahuna, 20,000; Taumarunui, 50,000; Te Teko, 50,000; Galatea, 50,000; Tahanatara, 145,000: total, 355,000.

Eighty thousand fry were also liberated in Tauranga and 15,000 in Te Puke districts. Both these districts are adjacent to the Rotorua Acclimatization District, and some of the streams are common to all three.

## SHOOTING.

During the deer-shooting season several good heads were secured. The following statistics show actual results, viz.: Rotorua-Whakatane Counties, sixteen licenses issued, thirteen heads secured, ranging from ten to sixteen points; Mahia Peninsula, one license issued, two heads secured; Waikaremoana, six licenses issued, seven heads secured: making a total of twenty-two heads secured by twenty-three stalkers.

During the year eight young red deer were received from the game-farm at Paraparaumu, and these were distributed as follows: Mahia Peninsula, 1 stag; Taumarunui, 1 stag and 1 hind; Rotoiti, 2 hinds; Okoreka, 1 stag and 1 hind; Tokaanu, 1 stag.

Some Sambur deer (or Ceylon elk), comprising five hinds and one stag, were captured in the Foxton district, and liberated in the Rerewhakaitu district, where the principal landowners have undertaken to afford the deer reasonable protection.

The shooting season for native and imported game was fairly successful, quail particularly being very plentiful. Nineteen cock and twenty-five hen pheasants were received from the Paraparaumu Game-farm, and fourteen birds have been distributed in different parts of the district. The balance are at present in the pheasantry in the Government gardens, together with ten young birds which have been hatched and reared there.

The district has been well ranged, with the exception of some outlying portions. Proceedings for breaches of the law were taken against twenty-six persons. Fines were inflicted amounting to £27, with costs £14. Several cases were dismissed on technical points, and the vigilance of the Ranger has had the effect of appreciably lessening the operations of the illegal, and putting matters on a more satisfactory footing for the genuine sportsman.

The new launch which has been built locally for the Ranger's use was put into the water in January, and has proved very efficient for ranging the lakes, and will be very useful for other departmental purposes.

## TE AROHA.

Te Aroha does not seem to have suffered in popularity, despite the present adverse conditions, the revenue received from the resort being only £24 less than last year—£1,316, against £1,340. The bath fees have decreased, but the playing-ground fees have considerably increased. No new bath-buildings were erected, but improvements effected in the existing buildings, and a douche apparatus erected in the Cadman Bath-building on the lines of those in Rotorua. Various small improvements were made, and the buildings, gardens, and playing-greens kept in first-class order.

## WAITOMO CAVES.

The Waitomo Caves revenue is a little less than last year, being £3,503, against £3,775 for last year. The last few months of the financial year showed a considerable falling-off. The contemplated additions to the hostel were held in abeyance, though many minor improvements in and around the house were put in hand by the Manager and staff.

## TE PUIA HOT SPRINGS.

Plans have been prepared of an up-to-date bath-building to replace the present structures, and, the necessary authority having been obtained from Cabinet, tenders are now being called for the erection of the building.

## MORERE.

Instructions have been given for the fencing of the valuable bush reserve to protect it from the encroachment of cattle, and also for the destruction of blackberries and other noxious weeds on the reserve.

## WAIKAREMOANA.

This resort has been well patronized during the year, and the house satisfactorily conducted by the lessees. The time has arrived for an extension to the present building and for improved drainage and lighting. Plans have been prepared by the Public Works Department providing for additions to the buildings and for a system of drainage to a septic tank. The question of going on with these alterations is at present under consideration.

## HANMER SPRINGS.

The business at Hanmer Springs has been largely affected by the fire which destroyed the sanatorium. The receipts have been £1,574, compared with £2,088 of last year. Arrangements were made

after the fire to lease two houses in a suitable position for the purpose of a sanatorium, and the establishment has been kept going, though under great disadvantages to the staff. As the whole of the furniture in the old building was totally destroyed in the fire, a considerable expenditure has been necessary to equip the temporary premises, but the furniture has been bought with a strict idea of its suitability for the new sanatorium. The plans of this are now in the hands of the Public Works Department, and will provide for a sanatorium on the most up-to-date lines possible.

#### HERMITAGE, MOUNT COOK.

The returns for this resort are very satisfactory. The erection of the new building (of which a photo is shown in the report) has had a very stimulating effect on the traffic. As I predicted in my last report, even the new building has at times been sorely taxed to find accommodation for the number of visitors, and the question of preparing plans to provide for an annexe to an extension of the hostel is now before the Public Works Department. The question must be faced sooner or later, and I am certain that the traffic to the alpine regions is now only in its infancy. Many improvements have been and are being effected which will add to the convenience of visitors and the attractions of the district. Chief among these was the erection of a convenient hut on the Mueller Glacier. This work, of the most arduous nature, was carried out entirely and in a most satisfactory manner by the members of the guiding staff. The hut commands a most comprehensive view of the whole glacier and surrounding peaks, and forms a base from which sixteen to eighteen fine ascents can be made, and also is the site of a splendid ski-ing ground. A Norwegian gentleman who visited the hut considered the runs up the Mueller and head of the Tasman were equal to the best in Norway. Had it not been for the unusual circumstances, a programme of winter sports would have been inaugurated at the Hermitage and Mueller this season. A high bivouac has also been erected at the Almer Rocks, at the head of the Franz Josef Glacier in Westland, and will be a great convenience and help to people crossing from the West Coast by way of Graham's Saddle. A number have already done this striking trip, returning to the Hermitage by way of the Copland Pass, and a largely increased number is looked for next season. The hut at Welcome Flat (Copland Track) has also been fully equipped with bedding, cooking utensils, and other necessary articles.

The guiding staff at the Hermitage has had a very strenuous season, and the work performed has been admirably carried out under great disadvantages. The guides (W. Brass and R. Young) who were filling the places of those lost in last season's fatality (D. Thomson and J. Richmond) both volunteered for service at the front, and one of them (Corporal William Brass) fell in action at the Dardanelles. Mr. Brass was one of the most promising and popular guides in the district. During the season the Chief Guide (Mr. Graham), who was recovering from a severe illness contracted in the course of his duty, and was therefore not able to do much high climbing, was ably assisted by Mr. C. Kain, Chief Guide of the Canadian Alpine Club, and a substantial record of climbs was made. Following is a list compiled by the Chief Guide :—

#### LIST OF CLIMBS ON SOUTHERN ALPS, SEASON 1914-15.

Date.	Name of Peaks.	Height.	Climbed by	Name of Guides.	Remarks.
		Ft.			
June 21	Sealey .. ..	8,651	F. Milne and R. Young .. ..	.. ..	First ascent.
September 23	Elie de Beaumont .. ..	10,200	C. Kain and F. Milne .. ..	.. ..	
November 8	Footstool .. ..	9,073	C. Kain and R. Young .. ..	.. ..	First ascent.
December 23	Unnamed peak .. ..	7,000	Mr. Suttin Turner .. ..	C. Kain.	
" 28	Sealey .. ..	.. ..	Messrs. E. P. Lee, M.P., and Scannall and Walton	" ..	
" 29	Unnamed peak on Sealey Range	8,200	Messrs. Slowman, Maughan, and Rev. Mr. Fisher	" ..	First ascent.
January 1	Footstool .. ..	.. ..	Messrs. Lee and Walton .. ..	.. ..	
" 2	" .. ..	.. ..	Messrs. Slowman, Maughan, and Rev. Mr. Fisher	" ..	
" 12	Mount Sealey .. ..	.. ..	Miss Lorimer and Mr. Wright	P. Graham.	
" 19	Mount Mabel .. ..	.. ..	Rev. Mr. Fisher .. ..	C. Kain.	
" 28	Mount Maunga Ma .. ..	8,335	F. Wright .. ..	" ..	Also Eagle Peak, 8,500 ft.
February 3	Mount Beattie .. ..	9,000	Messrs. Hugh Chambers and F. Wright	" ..	First ascent made on same day as St. David's Dome.
" 3	St. David's Dome .. ..	10,443	Ditto .. ..	" ..	
" 5	Mount Sealey .. ..	.. ..	Professor Robinson and Mrs. Robinson	Without guide.	
" 5	Unnamed peak on Mount Sealey	8,000	Mrs. J. Thomson .. ..	C. Kain.	
" 5	Unnamed peak on Mount Darby	8,287	" .. ..	" ..	
" 6	Mount Munga Ma .. ..	.. ..	" .. ..	" ..	
" 8	Mount Walter .. ..	9,507	Messrs. Wright and Robert- son	" ..	
" 11	Mount Darwin .. ..	9,715	Ditto .. ..	" ..	
" 11	Aiguille Range .. ..	9,731	Professor Robinson and Mrs. Robinson	" ..	
" 12	Coronet Peak .. ..	8,265	Professor Robinson and H. Chambers and Wright	" ..	
" 16	Mount Meeson .. ..	8,704	Ditto .. ..	" ..	
" 16	Footstool .. ..	9,073	Professor Robinson .. ..	F. Milne.	
" 16	Munga Ma .. ..	8,335	H. Chambers and Miss B. Holdsworth	C. Kain.	

LIST OF CLIMBS ON SOUTHERN ALPS, SEASON 1914-15—*continued.*

Date.	Name of Peaks.	Height.	Climbed by	Name of Guides.	Remarks.
February 16	Mount Sealey .. ..	Ft. 7,350	F. Wright and Mr. Robert-son	Without guide.	
" 19	Mount Malte Brun .. ..	10,421	F. Williams .. ..	F. Milne.	
" 19	" .. ..	10,421	Mrs. J. Thomson .. ..	C. Kain.	
" 24	Mount Sealey .. ..	..	S. Turner, F.R.G.S. .. ..	..	First single ascent without guide.
" 25	Mounts Rosa, Mabel, Kinsey, and Wakefield	..	F. Williams .. ..	F. Milne.	
" 27	Mount Sealey .. ..	8,651	Miss Theomin, Miss D. Chambers, and Mrs. P. Graham	P. Graham.	
" 27	" .. ..	..	H. Chambers and Miss B. Holdsworth.	..	
" 28	Mount Montgomery .. ..	7,654	S. Turner, F.R.G.S. .. ..	C. Kain .. ..	First ascent and traverse
March 1	Mount Spence .. ..	7,864	" .. ..	" .. ..	
" 3	Glacier Dome .. ..	8,047	Miss Chambers, Miss Holdsworth, and Mrs. Graham	P. Graham.	
" 3	Mount Rosa .. ..	7,098	Ditto .. ..	" .. ..	
" 4	Mount Kinsey .. ..	6,651	Mrs. J. Thomson .. ..	Without guide.	
" 8	Proud Peak .. ..	7,540	" .. ..	C. Kain.	
" 18	Mount Blackburn .. ..	7,835	" .. ..	P. Graham.	
" 19	Mount McKerrow .. ..	8,072	S. Turner, F.R.G.S. .. ..	C. Kain .. ..	First ascent
" 27	Edith Peak .. ..	7,800	Mrs. J. Thomson .. ..	" .. ..	
" 27	Lane .. ..	8,000	" .. ..	" .. ..	
" 30	Nun's Veil .. ..	8,975	" .. ..	" .. ..	

During the year four attempts were made to climb Mount Cook from the Hooker side, but, owing to weather and bad conditions, all ended in failure. Seven ascents, including four traverses, were made of Mount Annette (7,351 ft.) by the Sebastopol Ridge from the Mueller Hut; five ascents of the Hochstetter Dome (9,258 ft.), four crossings of the Ball Pass, one ascent of Harper's Saddle, six ascents and ten crossings of the Copland, and five crossings of Graham's Saddle were also made; and excursions to the Tasman, Hooker, Mueller, Stocking Glaciers, Sebastopol, Sefton Bivouac, and other interesting view-points were well patronized.

## TE ANAU—MILFORD TRACK.

The returns from the track have again been unsatisfactory, realizing only £786, against £1,207. This is the more disappointing from the fact that every effort has been made to put the track in first-rate order before the season opened, and a considerable expenditure incurred in so doing. The grass and scrub has been cleared off the track from end to end during the season, suspension bridge over the Arthur River replaced, culverts renewed and repaired through the whole length. An Evinrude engine was placed in the boat on Lake Ada and proved a great convenience. One has also been ordered for the boat on the Clinton River at Glade House, and will be available for trips up the Worsley Arm—one of the finest arms of Lake Te Anau. Many improvements have also been made at the huts, which are now in a very fine state of order.

The steamer on the lake has had several improvements effected, and the wharves at Te Anau and the head of the lake have been put in a proper state of repair.

## TRACK—MILFORD TO WAKATIPU.

A considerable amount of work has been done during the season to open up the Grave-Talbot Track from the head of Lake Wakatipu by the Hollyford and Routeburn Valleys to Milford Sound. A party of four men, under an ex Mount Cook guide, was engaged for some months on the work, and has made very considerable progress in opening up what will eventually be one of the most popular round trips in New Zealand.

## AGENCIES AND PASSENGER BOOKINGS.

With the decrease in business generally, the commission derived from this branch of business has fallen from £1,962 to £1,498.

The total value of tours issued from the different agencies amounted to £37,878, compared with £44,251 last year.

## SYDNEY AND MELBOURNE AGENCIES.

The total bookings at Sydney were £2,421, compared with £3,015 for 1913-14; and Melbourne, £2,154, against £2,490. The commissions on booking business were—Sydney, £92; Melbourne, £76. The expenditure in Sydney was £800, and Melbourne £870, made up as follows:—

	Sydney.	Melbourne.
	£	£
Rent .. ..	372	300
Salaries .. ..	358	435
Miscellaneous .. ..	70	135

The reports of the Melbourne and Sydney Agents are attached, and from them will be seen the varied work performed by them. They have been availed of by many Departments of State, and have invariably carried out their duties with the utmost satisfaction.

## ADVERTISING.

The scenic resorts of New Zealand have been well advertised throughout New Zealand and Australia during the year. Advantage was also taken of the Panama Exhibition to make a display in San Francisco papers, and this matter was placed in the hands of the New Zealand Commissioner (Mr. E. Clifton). A joint campaign was also entered on with the Railway Department for advertising in Australia, and it is hoped that the results may be satisfactory next season.

An illustrated poster, descriptive of Rotorua and the thermal district, was prepared by this Department, and circulated by the Railway Department throughout New Zealand and Australia. Many copies were also sent to America, India, &c. Similar publications are now being prepared to advertise the alpine and cold-lakes districts.

A complete collection of stags' heads and other sporting trophies and enlarged photographs of scenery were sent to the Panama Exhibition, and it is very pleasing to know that the exhibit has been described in many quarters as without a rival in its class in the whole Exhibition.

Arrangements were also made to acquire a set of films, taken under the direction of Major-General Godley, of the New Zealand troops in their camp in Egypt. The necessary authority to purchase was cabled by your direction to Major-General Godley, and the films should before long arrive in New Zealand, when arrangements will be made for their display in the different parts of the Dominion.

During the year a volume on the mineral waters and spas of New Zealand, by the Balneologist (Dr. Herbert), was published, and has been very widely distributed among the medical profession in New Zealand, Australia, and Europe. The work is a very complete one from the medical aspect, and should prove of great value in bringing the properties of New Zealand waters before those most interested. Two thousand five hundred copies of the Balneologist's pamphlet on the mineral waters and tourist resorts of New Zealand were reprinted. Ten thousand copies of a pamphlet on Rotorua, 5,000 of one on the Waitomo Caves district, 5,000 of one on Waikaremoana, and 10,000 copies of the "Itinerary of Travel" were also published and distributed through the Agencies of the Department. Assistance was also given to the publication and distribution of a pamphlet on Lake Wakatipu by the Dunedin Expansion League. Several of the Department's scenic maps were also republished during the year.

The various steamship companies trading to New Zealand have been very fully supplied with literature, and the Department's itinerary of travel has been kept up to date and widely circulated. Details of advertising in Australia are given in Mr. Manson's report attached.

## REPORT OF RESIDENT OFFICER, ROTORUA.

Rotorua, 4th June, 1915.

I HAVE the honour to submit my report for the year ended 31st March, 1915.

The work during the year has been normal and uneventful. Among the new permanent works the following items may be mentioned: Six new ferro-concrete culverts have been made opposite various business premises, and 20 chains of concrete kerbing and channelling have been laid in Pukuatua and Hinemoa Streets.

In course of general maintenance-work eight wooden culverts have been laid at points where business or property interests were not sufficiently permanent to warrant ferro-concrete work. Worn-out asphalt footpaths to the extent of 872 ft. have been picked up and relaid, while 1,188 ft. of existing asphalt footpaths have been recoated with tar and sand. Some 495 cubic yards of soft local metal and 255 yards of metal from Te Kuiti or Te Aroha were laid on various streets. 133 chains of soft pumice roads were reformed with the County Council's road-machine, at an average cost of 3s. 6d. per chain.

About 6 acres of the rubbish-tip and nightsoil-depot, which was infested with blackberries and other noxious weeds, was ploughed up, and, after the necessary disking and harrowing, was sown in oats, and yielded a fair crop. Apart from the improvement in appearance, this area of land will be useful for augmenting our supply of horse-feed, or, if left in grass, will be a resting-paddock for any of the horses.

In view of the unfavourable seasons experienced during the last few years, the yield of hay from the various local reserves has been so poor that additional cultivable land has become an absolute necessity.

## TOWN MORGUE.

This building was given to the town by the Department, but the cost of moving it to the selected site, and the internal renovation to fit it for its purpose, was borne by the Town Account.

## TOWN CLOCK.

The new post-office with clock-tower having been erected, the Seddon Memorial Clock, which had been purchased in England with money raised by public subscription, was duly installed, the Government defraying the cost of a set of chimes. The clock keeps excellent time, and is a most useful adjunct to the town. Its maintenance is a charge against the Town Account.

## FIRE-PREVENTION.

The personnel of the Board remains unchanged. The Board having decided after much consideration to purchase a motor hose-tender, negotiations are now in progress, and the machine will be available for use at an early date. The Board's levy on the Town Account was £282, to meet which a rate of  $\frac{1}{4}$ d. per pound was levied on the value of improvements.

## HOSPITAL AND CHARITABLE AID.

The levy made on the Town Account by the Waikato Hospital and Charitable Aid Board for year ended 31st March, 1915, amounted to £250 2s. 5d., which was met by a rate of  $\frac{1}{4}$ d. per pound struck on the capital value.

## PROGRESS OF THE TOWN.

The unsettled condition of the money-market consequent on the war is reflected in the lull in building operations this year as compared with last year. There were only twenty-six permits issued for new buildings and alterations to existing ones, the total value of buildings affected being £5,835. The total capital value of the town is £503,002.

WM. HILL, Resident Officer.

The General Manager, Wellington.

## ROTORUA TOWN BALANCE-SHEET FOR YEAR ENDED 31ST MARCH, 1915.

General Account.			
Receipts.		Expenditure.	
£	s. d.	£	s. d.
Balance at 31st March, 1914	232 4 7		
Treasury—		Administration—	
Bath fees .. .. .	1,161 18 4	Salaries .. .. .	302 10 0
Rents of Crown lands .. .. .	2,017 11 11	Printing and advertising .. .. .	2 1 3
Fees and fines (Magistrate's Court) .. .. .	16 12 6	Audit .. .. .	6 0 0
	3,196 2 9	Bank charges .. .. .	0 10 0
Fees—		Bank interest on overdraft .. .. .	0 15 0
Nightsoil service .. .. .	306 15 8	Office expenses .. .. .	13 11 0
Public pound .. .. .	69 15 1		325 7 3
Dog registration .. .. .	39 15 0	Public works—	
	416 5 9	Maintenance of streets and roads (labour and material)	2,971 2 2
Licenses—		Street-lighting .. .. .	157 10 0
Building permits .. .. .	22 0 0		3,128 12 2
Vehicle .. .. .	55 10 0	Nightsoil service—	
Drivers' .. .. .	5 2 0	Labour .. .. .	216 5 6
Publicans' .. .. .	190 0 0	Fodder and plant .. .. .	78 10 6
Plumbers' .. .. .	0 15 0		294 16 0
Auctioneers' .. .. .	28 3 4	Public pound—	
Billiard-room .. .. .	14 0 0	Labour .. .. .	13 10 0
Hall .. .. .	17 0 0	Fodder and advertising .. .. .	46 10 5
Second-hand dealers' .. .. .	0 15 0		60 0 5
Hoardings .. .. .	4 14 0	Public health—	
Shows .. .. .	10 0 0	Sanitary inspection .. .. .	80 0 0
Hawkers' .. .. .	1 0 0	Public morgue (internal fittings) .. .. .	114 15 0
	348 19 4		194 15 0
Rents—		Public library—	
Real property .. .. .	27 6 0	Salary .. .. .	60 0 0
Boat-shed compartments .. .. .	12 10 0	Books and papers .. .. .	28 0 0
Explosive-magazines .. .. .	7 3 9	Telephone, &c. .. .. .	26 7 1
	46 19 9		114 7 1
Public library—		Licensing-expenses—Tauranga County Council .. .. .	28 3 7
Subscriptions .. .. .	46 18 9	Miscellaneous—	
Rents .. .. .	51 3 4	Tauranga County Council—	
	98 2 1	Grant from Government to meet claim on adjustment of accounts when Rotorua County was created in 1887 .. .. .	100 0 0
Material sold .. .. .	4 13 9	Maintenance of town clock (101 days) .. .. .	4 3 10
Contributions to works .. .. .	60 19 6	Guides' badges .. .. .	1 2 8
Isolation Hospital—Fees recovered from patients .. .. .	2 0 0	Ground rent, Section 39, suburbs .. .. .	4 0 0
Miscellaneous—		Insurance, fire and accident .. .. .	41 17 1
Native village revenue .. .. .	3 1 6	Dog registration .. .. .	13 13 6
Legal fees recovered .. .. .	0 11 0		164 17 1
Sale of by-laws and badges .. .. .	0 12 0	Credit balance at 31st March, 1915 .. .. .	113 16 6
Refund, rail freight .. .. .	4 0 8		£4,424 15 1
.. wages .. .. .	4 10 4		
.. witness's expenses .. .. .	0 6 0		
.. overpayment .. .. .	1 0 0		
	14 1 6		
Penalty—			
10 per cent. on overdue rates .. .. .	4 6 1		
	£4,424 15 1		

4th June, 1915.

WM. HILL,  
Resident Officer, Rotorua.

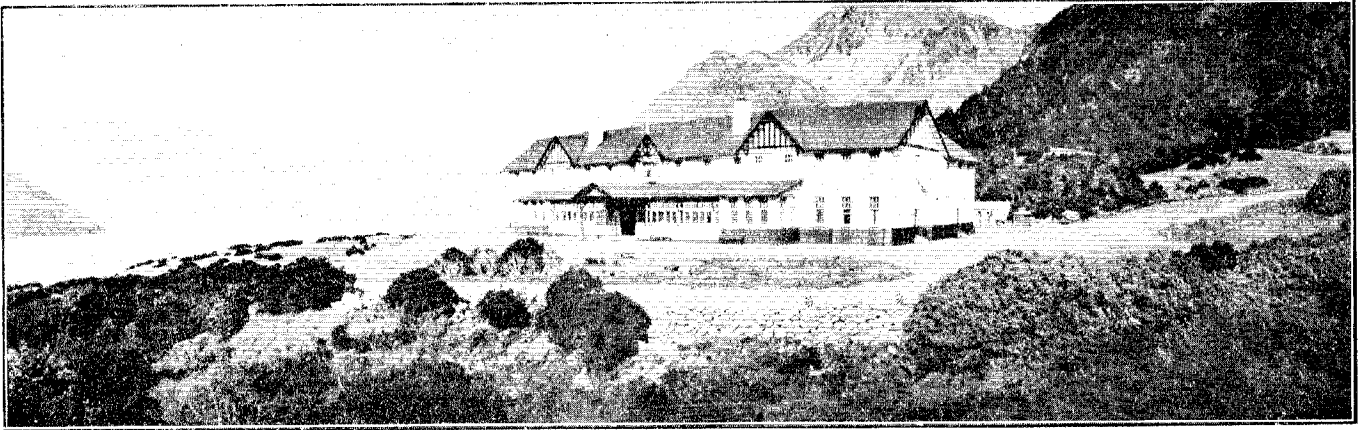
## Separate Account.

## No. 1. HOSPITAL AND CHARITABLE AID RATE ACCOUNT.

Receipts.		Expenditure.	
£	s. d.	£	s. d.
Rates, 1912-13 .. .. .	3 19 7	Debit balance at 31st March, 1914 .. .. .	4 16 2
.. 1913-14 .. .. .	33 6 5	Waikato Hospital Board .. .. .	250 2 5
.. 1914-15 .. .. .	147 11 7	Printing and advertising .. .. .	3 10 3
	184 17 7	Postages .. .. .	0 10 7
Debit balance at 31st March, 1915 .. .. .	74 1 10		
	£258 19 5		£258 19 5

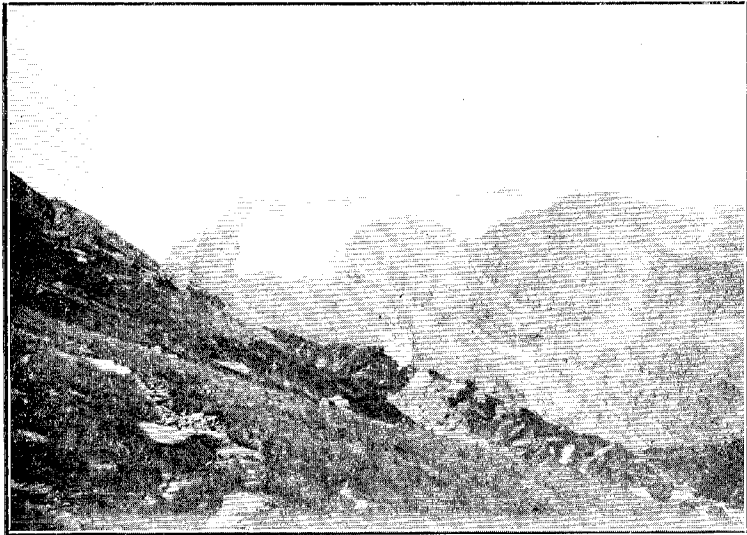


SOUTHERN ALPS.

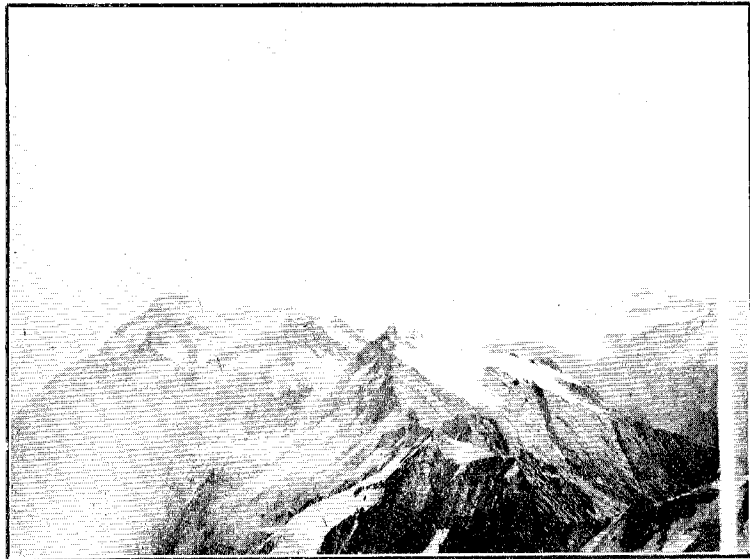


*P. Githam, photo.*

THE HERMITAGE.

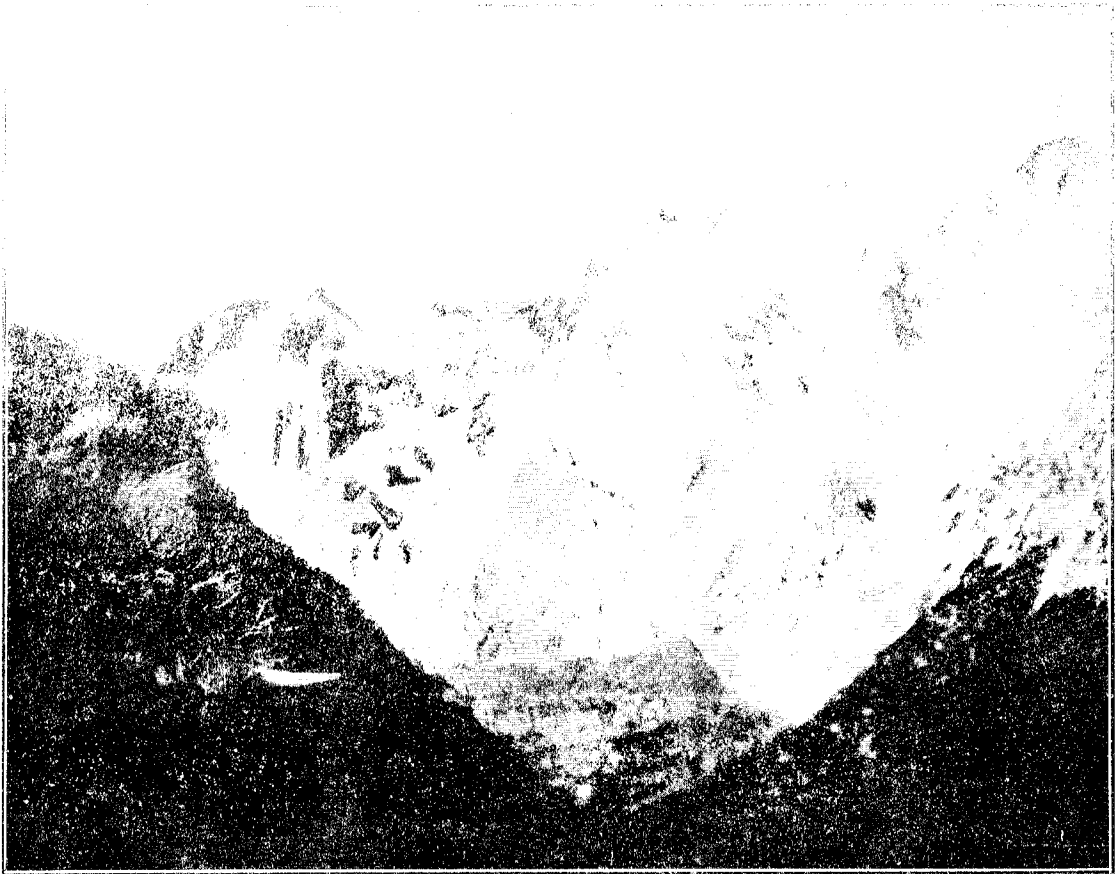


MOUNT MCKERROW (ON THE LEFT) AND OTHER PEAKS.  
*S. Turner, photo.*



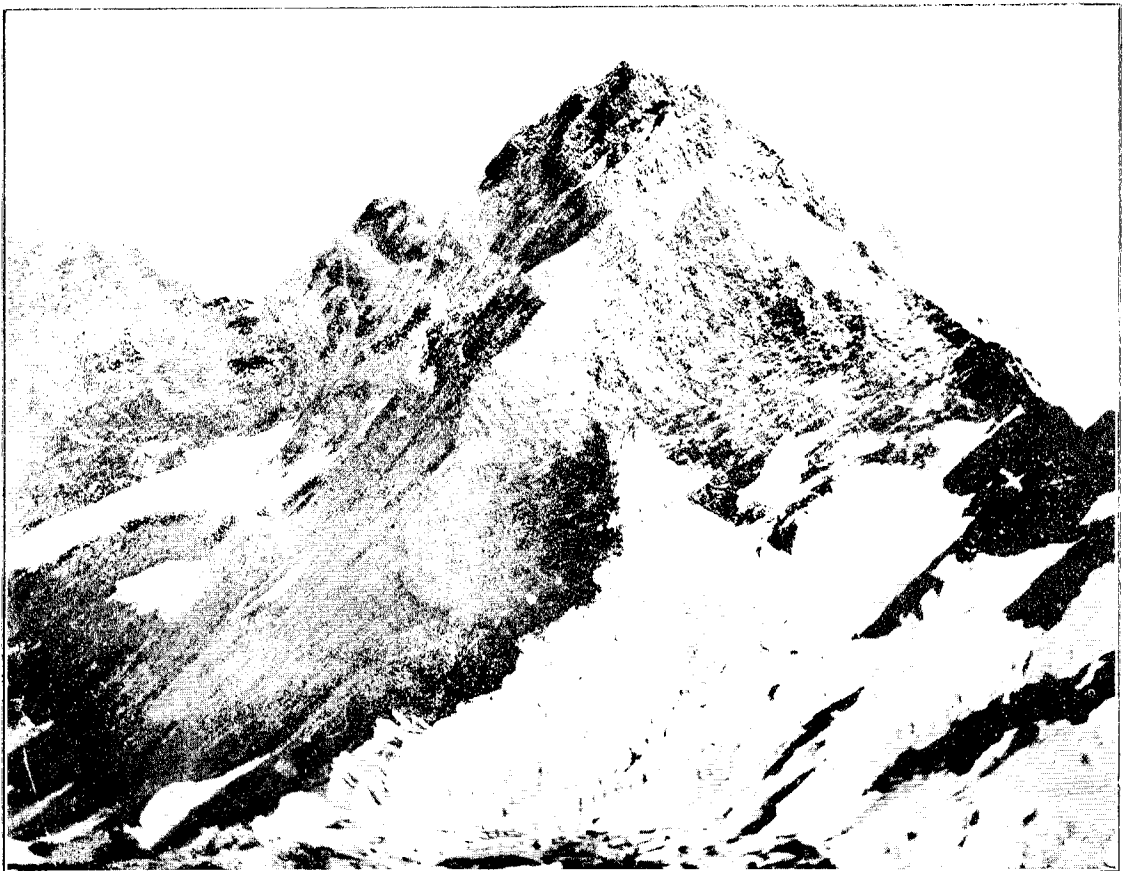
UNCLIMBED PEAKS IN THE LANDSBOROUGH, FROM SUMMIT OF MOUNT  
MCKERROW.

*S. Turner, photo.*



*S. Turner, photo.*

MOUNT HOPKINS AND MOUNT MCKENROW



*S. Turner, photo.*

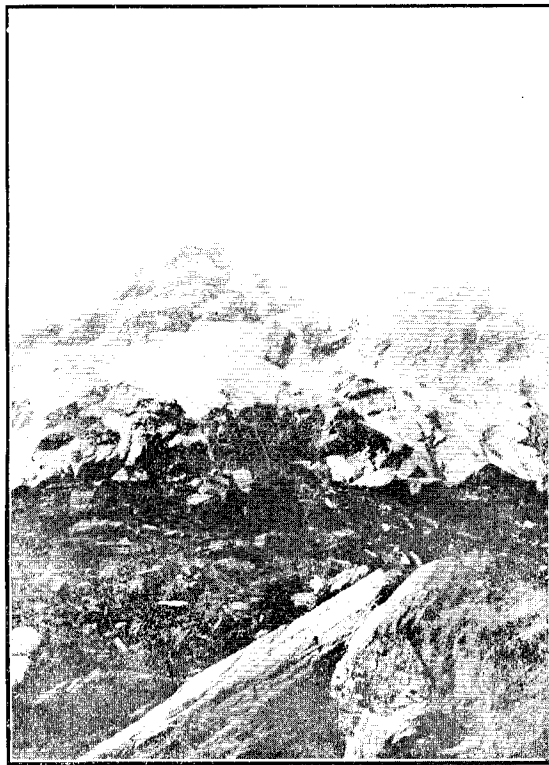
MOUNT HOPKINS

SOUTHERN ALPS.



MOUNTS VAMPIRE AND BURNS.

*S. Turner, photo.*]



MOUNT BURNS, FROM THE LANDSBOROUGH.  
*S. Turner, photo.*]



Mount Cook.

Hochstetter Ice-fall.

Silberhorn.

Tasman.

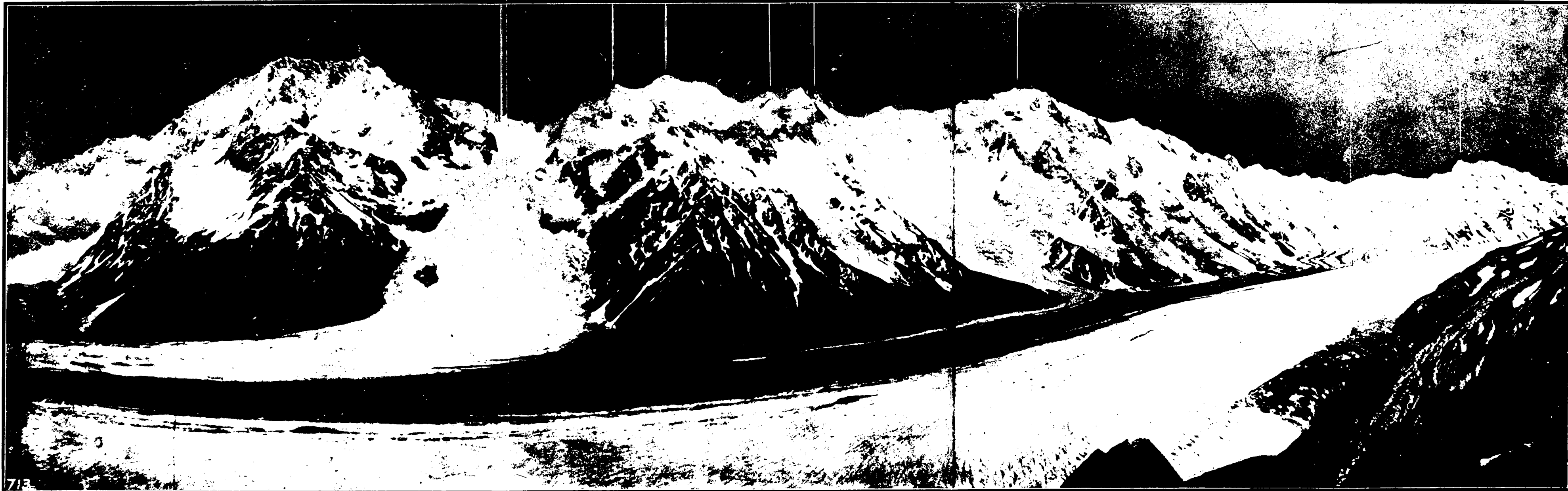
Lendenfeldt.

Haast.

Hardinger.

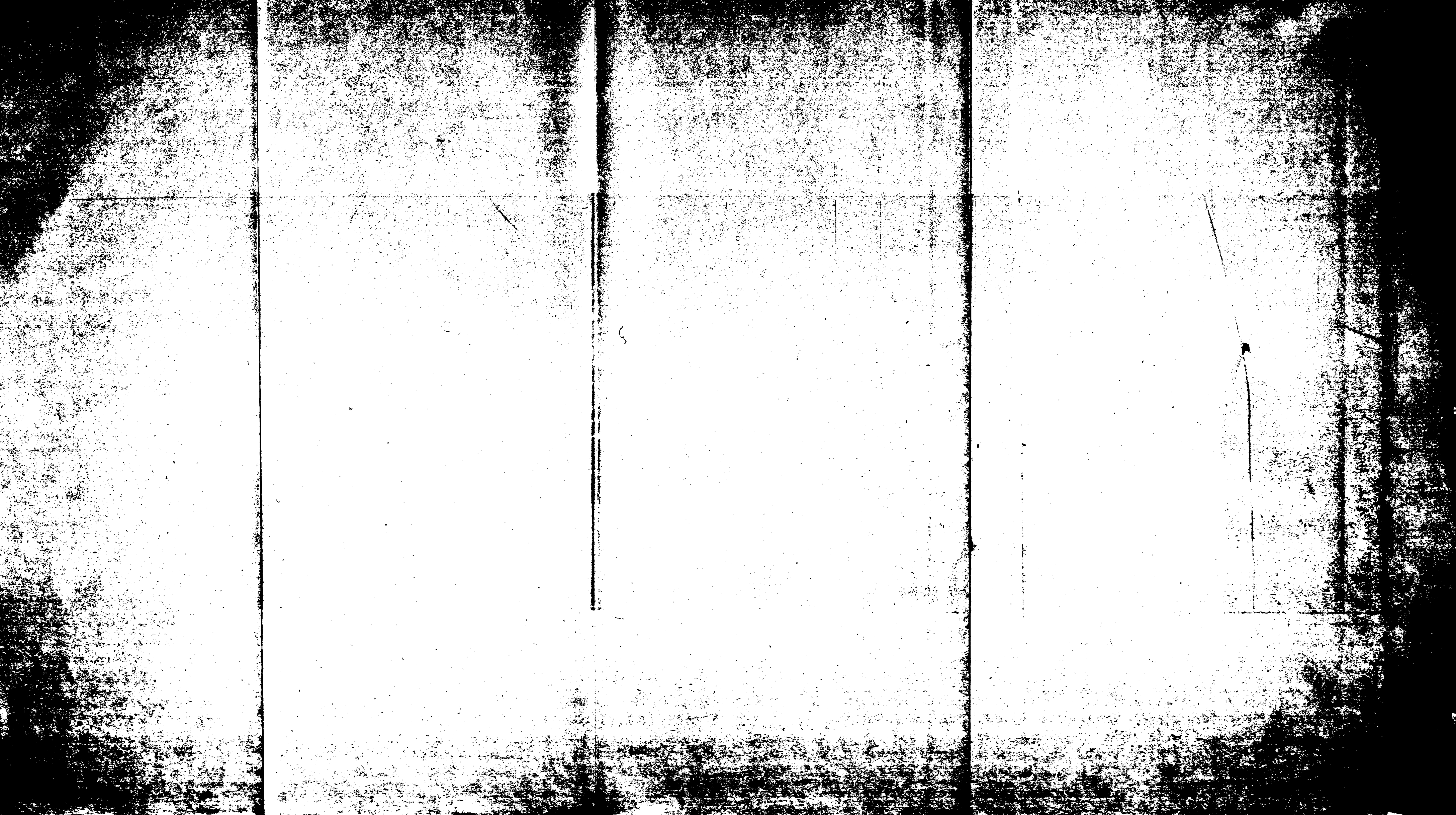
De La Beche.

H.—2.



SOUTHERN ALPS FROM MALTE BRUN RANGE.

713



Sefton.

Puntstrol.

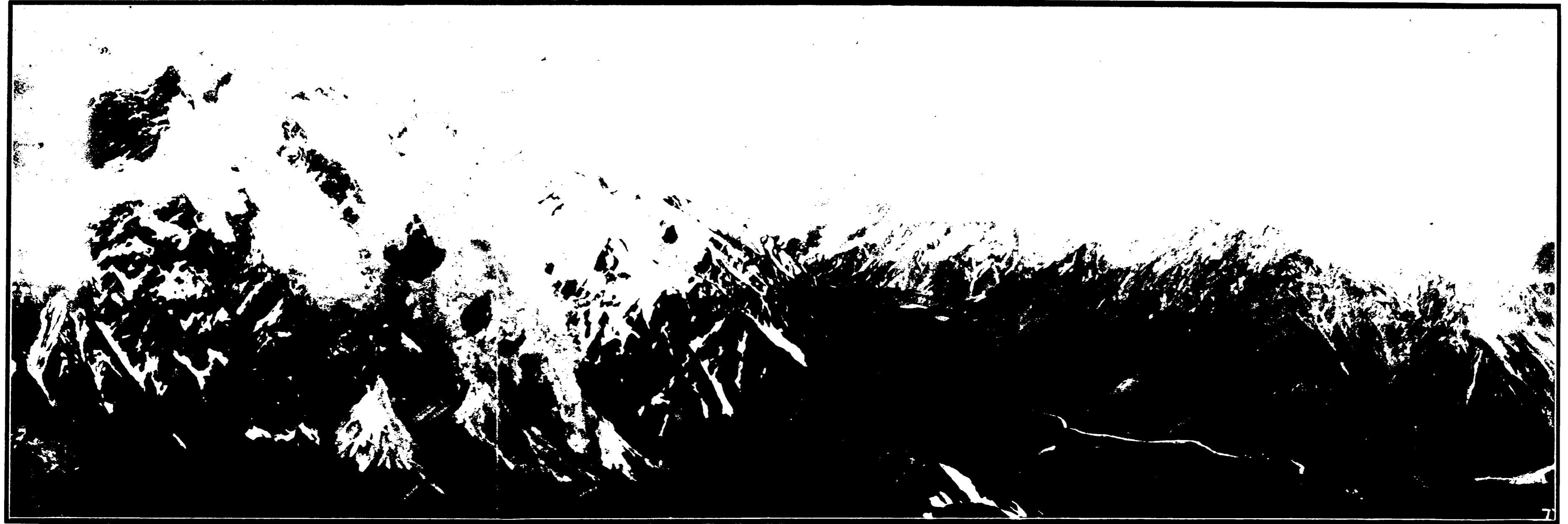
Mount Cook.

Malte Brun.  
Chudleigh.

Kinsey.

Nim's Veil.

H.—2.



SOUTHERN ALPS FROM SCALY RIDGE.





ROTORUA TOWN BALANCE-SHEET FOR YEAR ENDED 31ST MARCH, 1915—*continued.*

*Separate Account—continued.*

NO. 2. FIRE-PREVENTION RATE ACCOUNT.

<i>Receipts.</i>				<i>Expenditure.</i>							
	£	s. d.	£	s. d.		£	s. d.				
Credit balance, 31st March, 1914..	..	..	70	1	9	Rotorua Fire Board .. ..	257	11	6		
Rates, 1912-13 .. ..	2	5	1			Printing and advertising .. ..	3	10	3		
„ 1913-14 .. ..	51	7	0			Postages .. ..	0	10	8		
„ 1914-15 .. ..	138	10	8			Credit balance at 31st March, 1915 .. ..	0	12	1		
			192	2	9						
			£262	4	6				£262	4	6

NO. 3. ROTORUA CEMETERY ACCOUNT (Section 55, Cemeteries Act, 1908).

<i>Receipts.</i>				<i>Expenditure.</i>							
	£	s. d.	£	s. d.		£	s. d.				
Credit balance, 31st March, 1914..	..	..	50	1	4	Maintenance .. ..	76	14	5		
Fees for exclusive right of burial..	26	0	0			Bank charges .. ..	0	10	0		
„ ordinary burial .. ..	28	6	0			Balance, 31st March, 1915 .. ..	27	2	11		
			54	6	0						
			£104	7	4				£104	7	4

*Statement of Balances.*

<i>Accounts.</i>				<i>Balances.</i>						
	£	s. d.	£	s. d.		£	s. d.			
General Account .. Cr.	113	16	6		Credit—					
Separate Account No. 2 ..	0	12	1		Rotorua Town Account ..	114	6	4		
„ No. 3 ..	27	2	11		Less outstanding cheques ..	81	18	11		
			141	11	6			32	7	5
„ No. 1 .. Dr.	74	1	10		Cemetery Account .. ..	14	17	11		
			£67	9	8	Cash in hand .. ..	20	4	4	
								£67	9	8

4th June, 1915.

WM. HILL,  
Resident Officer, Rotorua.

*Statement of Assets and Liabilities.*

<i>Assets.</i>				<i>Liabilities.</i>							
	£	s. d.	£	s. d.		£	s. d.				
General Account—Bank ..	114	6	4		Outstanding accounts .. ..	193	18	5			
Cemetery Account—Bank ..	14	17	11		Outstanding cheques—General Account ..	81	18	11			
Cash in hand .. ..	20	4	4		Balance, being excess of assets over liabilities	2,946	16	0			
			149	8	7						
Outstanding accounts—											
Kerbing and channelling ..	45	3	8								
Tar and explosives .. ..	1	0	2								
Rents—											
Boat-shed compartments ..	22	10	0								
Real property (houses and sections) ..	14	9	8								
Explosive-magazines .. ..	1	11	3								
Isolation Hospital fees .. ..	5	15	0								
Library—											
Rent of room (Waiariki Maori Land Board) ..	7	10	0								
Education Board, Auckland ..	6	10	0								
Rail fares paid to indigent persons, and recoverable from Charitable Aid Boards ..	2	3	7								
Nightsoil fees .. ..	254	9	3								
			361	2	7						
Outstanding rates—Hospital and Charitable aid and fire-prevention .. ..			215	2	2						
Estimated—											
Library building and furniture ..	725	0	0								
Nightsoil-depot (building and plant) .. ..	155	0	0								
Pound cottage .. ..	155	0	0								
General working plant .. ..	480	0	0								
Rowing-club shed .. ..	450	0	0								
Fencing, &c., Marino Parade ..	100	0	0								
Fencing, &c., gravel-pit reserve ..	42	0	0								
Office furniture and plant .. ..	170	0	0								
Cemetery Chapel .. ..	130	0	0								
Benzene-magazine .. ..	90	0	0								
			2,497	0	0						
			£3,222	13	4				£3,222	13	4

4th June, 1915.

WM. HILL,  
Resident Officer, Rotorua.

## REPORT OF THE BALNEOLOGIST, ROTORUA.

Rotorua, 13th April, 1915.

I HAVE the honour to present my annual report for year ended 31st March, 1915.

I have to report that our business at the baths for the year, while being below the average, has been by no means as bad as I anticipated would be the case; a decrease was naturally expected after the outbreak of war.

As a set-off to diminished receipts, expenditure has been curtailed as far as possible, and a number of projected additions and improvements have been held over, the only structural additions being those to the women's wing of the sanatorium, which were already in hand, and which were greatly needed. The old ward has been divided into cubicles, a large veranda has been made into a semi-open-air ward, increasing the accommodation by four beds, so that the total accommodation at the sanatorium is now thirty-four beds. A modern lavatory has been added, and a sunny open-air sitting-room provided. The similar additions to the men's wing which had been approved have been held in abeyance.

At the baths the only addition worthy of mention has been the installation of an apparatus, ordered before the war, for the impregnation of drinking-water with radium emanation. This has a capacity of about fifty doses of 1,000 Maché unit strength per diem, and, so far as I am aware, is the first of its kind in Australasia, though very widely used now in England. So far as my experience yet goes it has proved successful, and a number of patients, especially diabetics and gouty cases, have been sent to Rotorua for the express purpose of taking this water.

Apart from the baths, the year has been one of exceptionally hard and trying work, chiefly on account of the epidemic of enteric fever amongst the Maoris, which started last winter, continued through the spring and early summer, and which happily now appears to have died out. The disease, unfortunately, attacked several of the nurses attending the sick, and we have to deplore the death of the Matron, Miss Pownall, from this cause. Energetic measures were taken to cope with the epidemic, and recently 356 Natives submitted to anti-typhoid inoculation and 269 to reinoculation, a total of 625 injections.

The Cottage Hospital has been almost always busy, and has fulfilled its purpose of meeting the emergency needs of the district.

Finally, I would wish to thank the staff of the baths, office, sanatorium, and hospitals for their ungrudging and loyal co-operation.

ARTHUR S. HERBERT, Government Balneologist.

The General Manager, Wellington.

## STATISTICS.

	1914-15.			1913-14.		
	£	s.	d.	£	s.	d.
Sanatorium .. .. .	1,763	12	3	2,019	14	9
Baths and mineral water .. .. .	2,349	3	6	2,587	5	1
Massage and special treatments .. .. .	594	10	6	632	3	0
Out-patients' fees .. .. .	531	6	0	407	0	6
Pump-room .. .. .	27	7	9	32	0	0
Games, camera, &c., tennis-balls .. .. .	414	19	0	439	14	9
Tea .. .. .	6	3	6	8	11	3
Miscellaneous .. .. .	55	7	3	10	19	10
<b>Totals .. .. .</b>	<b>5,742</b>	<b>9</b>	<b>9</b>	<b>6,137</b>	<b>9</b>	<b>2</b>

## Summary of miscellaneous—

	£	s.	d.
Board and lodging (Rennell and Findlay) .. .. .	50	12	3
Rent .. .. .	4	5	0
Dr. Wohlmann's book .. .. .	0	10	0
	<b>£55</b>	<b>7</b>	<b>3</b>

ARTHUR S. HERBERT, Government Balneologist.

## REPORT OF THE NEW ZEALAND GOVERNMENT AGENT, MELBOURNE.

Mr. H. J. MANSON reports as follows:—

I have the honour to submit my annual report for the year ended 31st March, 1915.

In reviewing the work carried on at these offices for the above-mentioned period it is distinctly gratifying, in face of the most adverse conditions experienced—at any rate, in the second half of the twelve months under review—to be able to report steady progress and such satisfying results.

The scope of our operations has expanded year by year, until we have become an indispensable link between the Commonwealth and the Dominion. In the early years following the establishment of this Agency it was looked upon as a tourist bureau pure and simple, but that impression has been lived down; and to-day, by Federal and State politicians, by the Press, and by the great mercantile community, we are consulted on every conceivable topic in any way relating to New Zealand's politics, commerce, public institutions, and matters of general interest.

I am more than pleased to report only a very small falling-off in the booking receipts as compared with last year. There is no doubt that, although owing to the war we have lost for the time being a great number of European tourists, we have secured visits to our islands from quite a number of Australians who otherwise would have visited the Home-land, Egypt, and the Riviera.

I have more than once during the year drawn attention to the scanty steamship service between Melbourne and the Bluff. Formerly we had no difficulty in booking visitors right through from Melbourne via the South when we could depend on the regular weekly service going and coming. Now there is one solitary boat in three weeks, and a second-rater at that. This has militated against our returns, in spite of which our figures for the year are £2,281 2s., against £2,553 3s. 1d. for the term covered in my last annual report. I venture to express the hope that this disability under which we labour will be removed at the first possible moment, as well in our interests as in those of shippers and of the travelling public.

I did not think it advisable to utilize the whole of the amount allotted to me for advertising purposes, in view of the lateness of the season and the fact that the results likely to accrue would probably not be commensurate with the expenditure involved, partly by reason of what has turned out to be the most severe drought ever experienced and that the war fever has sunk everything in the nature of an advertising campaign into insignificance.

I cannot refrain from quoting a few lines from a recent editorial in the Melbourne *Age* as follows: "The New Zealand and Tasmanian Governments appeal to tourists from almost every hoarding throughout the cities of Australia; they post up pictures of mountains and streams, and of vast hauls of fish said to have been made by visiting anglers. To the island State, ordinarily thought to be a sleepy hollow, and to New Zealand, the tourist traffic, chiefly from the mainland of Australia, is worth scores of thousands a year. Railway and coach revenue and private business gain enormously."

The systematic distribution of literature has been more than usually well carried out, and I have had, perhaps, even better supplies from the Head Office than formerly; and shipping offices, public libraries (even as far as Durban, Natal), doctors' and dentists' waiting-rooms, leading hotels, and in fact every resort where the public "most do congregate" have been amply supplied with reading-matter.

In this connection I was enabled to procure without cost a further edition of the very successful brochure "Maoriland," revised and brought thoroughly up to date. The Melbourne edition ran to 8,000 copies, and the original contributions from Sir John Madden, Professor Rentoul, Lord Plunket, and Professor Baldwin Spencer, whose beautiful illustrations we again used, were retained. I also put the man responsible for the cost of production, which was considerable, in touch with our Sydney Agent, with a view to his arranging for a similar issue.

The Dominion Day function at the Agency has now become something of a social event, and this year the attendance was larger than ever, and for the first time was graced by the presence of ladies. Congratulatory speeches were made on the occasion by the Lord Mayor of Melbourne, Sir David Hennessy, Senator Pearce, Federal Minister of Defence, and the Russian Consul-General. All the foreign Consulates in Melbourne displayed their national flags as a mark of respect to the Dominion.

Amongst those for whom I have made arrangements for a trip through the Dominion are the Right Hon. Andrew Fisher, the British Trade Commissioner, G. T. Milne Esq., and Mr. S. G. Hart, of the Indian Civil Service.

Matters relating to Customs and commerce generally will be treated in my trade report to the Department of Agriculture, and need not be recapitulated here, though I may be allowed to refer in conclusion to the fact that other Government Departments—notably those controlling Immigration, Lands for Settlement, Customs, Mining, and Defence—are making more and more use of the facilities afforded by this Agency as time progresses.

#### REPORT OF THE NEW ZEALAND GOVERNMENT AGENT, SYDNEY.

The Agent (Mr. W. R. Blow) reports as follows:—

On the 1st July the office was removed from 339 George Street to Bull's Chambers, 14 Moore Street. The offices are very excellently situated, being in one of the main streets of the town, and only one minute's walk from the General Post Office. The rent of these premises is £250 per annum, as against £800 per annum paid for the old offices; the saving in rent that was made in taking these offices is therefore £550 per annum. A saving of over £50 per annum was also made in the cost of cleaning and lighting, thus making a total saving of over £600 per annum.

#### BOOKING TOURISTS.

In connection with the booking of tourists to and through the Dominion, I regret to report that the money taken at this office is £671 17s. 6d. less than the amount taken for the previous year. Our experience has not been exceptional, as the Union Steamship Company, the Huddart-Parker Steamship Company, and Messrs. Thomas Cook and Son have each suffered a great falling-off in their New Zealand passenger business since the outbreak of war. The following figures will no doubt be found interesting:—

	Year, 1913-14.	Year, 1914-15.
Number of persons booked . . . . .	191	156
Amount of money received for bookings	£2,952 18s. 11d.	£2,281 1s. 5d.

#### IMMIGRATION.

Over three hundred foreigners were examined during the year, with a view to seeing if they could pass the education test as prescribed by the Immigration Restriction Act. Of this number, 276 were successful, and certificates were consequently issued to them.

## ADVERTISING.

During the year the two hoarding advertisements at the Agricultural Showground and at Katoomba have been continued, and space taken in a "Guide" of a leading city hotel.

An excellent advertisement was obtained in the shape of a number of photographic enlargements of the Southern Alps, which the Kodak Company exhibited without charge in the windows of their Sydney, Melbourne, Brisbane, and Adelaide branches. I also issued and distributed throughout the Commonwealth some thousands of "Guides" descriptive of New Zealand. In this case the result was most gratifying, as, although the booklets have been only a few months in circulation, they have already been the direct means of securing £120 worth of business; the total cost of the "Guides" to the Department was £4 4s.

## WORK CARRIED OUT ON BEHALF OF OTHER GOVERNMENT DEPARTMENTS.

Quite a feature of the work carried on at this office during the year has been the amount of business performed for other Government Departments in New Zealand. Work has been carried out at the request of all the principal Departments, including Immigration, Customs, Defence, Public Works, Postal, and Internal Affairs. I am pleased to state that the office has also been very largely availed of by persons desirous of obtaining information on matters dealing with Customs tariff, immigration, taxation, labour laws, settling, defence, patent laws, and statistics. Much of the increase in this branch of the work is due to the regulations that the Government have found it necessary to draw up on account of the war. Other Departments not affected by the war have apparently found it advisable to use this office more than hitherto.

## DOMINION DAY IN SYDNEY.

On Dominion Day a luncheon was given on behalf of the New Zealand Government, and I am pleased to state that it proved a great success.

## GENERAL.

During the year advantage was taken of every opportunity of advertising New Zealand by distributing literature, lending magic-lantern slides, and loaning framed photographs.

The drought that has been affecting Australia for some considerable time past caused many persons to make inquiries about settling in New Zealand. Most of these inquirers were farmers and artisans, and in each case full information was given, and many intimated their intention of settling in the Dominion.

*Approximate Cost of Paper.*—Preparation, not given; printing (1,100 copies, including illustrations), £32 15s.

---

By Authority: JOHN MACKAY, Government Printer, Wellington.—1915.

Price 9d.]