

1909.  
NEW ZEALAND.

# E D U C A T I O N : S E C O N D A R Y · E D U C A T I O N .

[In continuation of E.—12, 1908.]

*Presented to both Houses of the General Assembly by Command of His Excellency.*

## 1. EXTRACT FROM THE THIRTY-SECOND ANNUAL REPORT OF THE MINISTER OF EDUCATION.

### S E C O N D A R Y E D U C A T I O N .

#### *Number of Schools.*

THE schools usually included in the list of secondary schools in this report which were open in 1908 were thirty in number, namely,—

(a.) “ Endowed secondary schools ” within the meaning of section 89 of the Education Act and included in the Eighth Schedule to the Act ..	25
(b.) Secondary schools within the meaning of the same section (89), but established by the Minister under section 94 .. .. .	3
(c.) Other endowed secondary schools not coming within the definition of section 89 .. .. .	2
Total .. .. .	30

Five of the endowed secondary schools named in the Schedule to the Act had not been established at the end of the year, although there were district high schools in the same places which were to some extent assisted by funds derived from the endowments of the secondary schools. In one of the cases referred to (the Gisborne High School) a secondary school proper was opened in February, 1909. A list of the schools is given in Table J2. The number of district high schools in operation during the year was sixty-six.

#### *Roll and Staff.*

The total number of pupils attending the thirty secondary schools in the last terms of 1907 and 1908 respectively were as follows :—

	1907.			1908.		
	Boys.	Girls.	Total.	Boys.	Girls.	Total.
Roll (exclusive of lower departments)	2,441	1,610	4,051	2,502	1,678	4,180
Number in lower departments ..	87	58	145	88	59	147
Total .. .. .	2,528	1,668	4,196	2,590	1,737	4,327
Number of boarders (included above)	485	124	609	557	136	693

In the same years these schools were staffed as follows :—

	1907.			1908.		
	M.	F.	Total.	M.	F.	Total.
Regular staff .. .. .	118	86	204	125	91	216
Part-time teachers .. .. .	38	22	60	43	25	68

The average number of pupils per teacher (excluding part-time teachers) is thus seen to have been 20·6 in 1907, and 20 in 1908.

The total number of pupils attending the secondary departments of the sixty-six district high schools in the two years, 1907, 1908, respectively, were—

	1907.	1908.
Boys .. .. .	1,243	1,017
Girls .. .. .	1,209	1,125
Total .. .. .	2,452	2,142

Besides the head teachers, who generally take some part in the secondary instruction, there were employed in 1907 in the secondary departments of district high schools 101 special assistants—53 men and 48 women—and last year 102 special assistants—namely, 55 men and 47 women. The average number of pupils per teacher was 24·3 in 1907 and 21 in 1908.

In addition to those in secondary schools and in the secondary departments of district high schools there should properly be included in the number of pupils under secondary instruction in the Dominion (a) the pupils attending certain day classes in connection with technical schools who are receiving a special form of secondary instruction, and (b) the pupils in various institutions for the secondary education of Maori boys and girls.

Including these, but excluding the pupils in the lower departments of secondary schools, we find the total number of pupils receiving secondary instruction at the end of 1908 to be as follows :—

	Boys.	Girls.	Total.
Secondary schools .. .. .	2,502	1,678	4,180
District high schools .. .. .	1,017	1,125	2,142
Technical day-schools .. .. .	1,096	904	2,000
Maori secondary schools .. .. .	136	167	303*
Total .. .. .	4,751	3,874	8,625

\* All these pupils are boarders.

#### *Salaries of Secondary Teachers.*

The total amount of the salaries paid to the regular staffs of secondary schools as at the rates paid at the end of the year was £47,788. As might be expected, the salaries paid in the different secondary schools varied considerably; the average for principals and assistants, and that for men and women respectively, are shown below to the nearest pound :—

#### *Salaries in Secondary Schools.*

	December, 1908.		
	M. £	F. £	All. £
Principals .. .. .	464	341	422
Assistants .. .. .	224	147	190
Whole staff .. .. .	£261	£168	£222

NOTE.—The salaries of part-time teachers are excluded from the above comparison.

In the secondary departments of district high schools salaries are uniform, in accordance with the Schedule to the Act. The average salaries actually paid to the assistants, in addition to the sums paid by way of extra salary to the head teachers, were, in December, 1908,—

	£	s.	d.
Men .. .. .	193	17	7
Women .. .. .	145	4	3
All secondary assistants .. .. .	171	9	1

(The scale of salaries is the same for men and women.)

The total amount paid in salaries for the secondary departments of district high schools, including the special payments to head teachers, was £20,501; in 1907 it was £20,388.

The professional qualifications of the secondary teachers of the Dominion are shown below:—

*Status of Secondary Teachers (Regular Staff only), December, 1908.*

	Secondary Schools.	District High Schools (Secondary Departments).
Principals,—		
Graduates .. .. .	29	24
Holding certificates or other qualifications (excluding graduates) .. .. .	1	42
Assistants,—		
Graduates .. .. .	142	58
Certificated (excluding graduates) .. .. .	11	37
Uncertificated .. .. .	34	7
Total .. .. .	217	168

Further information in regard to the roll, and staff, and salaries of secondary schools is given in Tables J1 and J2; and further information of the same kind for district high schools is contained in Tables K1 and K2.

#### *Free Secondary Education.*

At the end of 1908 the secondary schools giving free tuition to duly qualified pupils, and receiving grants therefor under the Act, were twenty-seven, as against twenty-six for the preceding year. The total number of pupils on the roll of these schools, exclusive of pupils in the lower departments of the schools, was 4,180, and out of this total, 2,747, or 66 per cent., were given free places under the regulations. The total annual payment at the rate paid for the last term of the year would be approximately £24,824; the approximate average cost to the Treasury was therefore £9 0s. 9d. per pupil.

In addition, free tuition was given to 145 others who were holders of scholarships or of exhibitions granted by these schools, or by endowed secondary schools not coming under the conditions for free places, making the total number of free places held at secondary schools 2,892, or 69 per cent. of the net roll above referred to. Further information in regard to the free places and scholarships held at secondary schools will be found in Table J3 of E.—6. Moreover, in reckoning the amount of free secondary education in the Dominion must be included the pupils in attendance at the secondary classes of district high schools, 2,142 in number, all but a comparatively small number of whom were free pupils, receiving free tuition at an average cost to the Government of £9 11s. 5d. per pupil. There should be added also those receiving free education in Maori schools, 108 in number, and the holders of certain free places in technical schools, numbering 2,000. There is thus an approximate total of 7,142 pupils receiving free secondary education, exclusive of those holders of free places in technical schools who were art students, or were taking courses which may be more approximately described as technical rather than as secondary.

The following table gives a summary of the various secondary free places referred to:—

*Free Places as in December, 1908.*

	Boys.	Girls.	Total.
(i.) Secondary Schools,—			
(a.) Junior free pupils .. .. .	1,083	839	1,922
(b.) Senior free pupils .. .. .	479	346	825
Total .. .. .	1,562	1,185	2,747
(ii.) District high schools .. .. .	1,017	1,125	2,142
(iii.) Maori secondary schools .. .. .	43	65	108
(iv.) Technical day-schools .. .. .	1,096	904	2,000
Grand total .. .. .	3,718	3,279	6,997

The following paragraph from last year's report is inserted here, with the necessary modifications, as an explanation of the conditions upon which Junior and Senior Free Places are obtained:—

“Under the Regulations for Free Places in secondary schools and district high schools boys and girls who qualify for Junior Scholarships, whether they obtain scholarships or not, or pass a special examination for free places, or who obtain certificates or proficiency at the completion of their primary course, become eligible generally for a Junior Free Place, which gives the privilege of two years' free tuition, with a possible extension to a third year without further examination.

“At the end of the period a Senior Free Place is obtainable to the age of nineteen by all who succeed in passing the Civil Service Junior Examination, either in its competitive form or, as slightly modified for the purpose in question, in the form of a qualifying examination only. The Matriculation Examination of the University may also be used for this purpose, and those qualifying for Senior Board Scholarships, whether by means of the Department's examination or not, are also eligible. As, however, various reasons exist in the interests both of the pupil and of the school for dispensing with an external examination whenever this can be done with convenience and safety, the new regulations, gazetted 2nd April, 1908, encourage the use, as a qualification for Senior Free Places, of a slightly modified form of the 'accrediting' system, which has for some time been growing in favour with educational authorities elsewhere, and which forms commonly a characteristic feature of Continental and American schools. Hereafter, on the joint recommendation of the principal of the school attended (or, in the case of district high schools, of an Inspector of the district) and of the Inspector-General of Schools, it will be possible for a free pupil who has gone through a satisfactory course of work of sufficient scope to secure, without the restrictions of an intermediate public examination, free secondary education throughout the whole course of his attendance at a secondary school up to the age of nineteen years.”

*Scholarships held at Secondary Schools and District High Schools.*

The scholarships at secondary schools and district high schools are of four kinds,—

- (i.) Junior National Scholarships ;
- (ii.) Education Board Scholarships ;
- (iii.) Foundation or Governor's Scholarships, given by the governing bodies of secondary schools ;
- (iv.) Private scholarships, endowed by private donors.

(i.) *Junior National Scholarships.*—These scholarships, which were established by “The National Scholarships Act, 1903,” the provisions of which, with its amendments, are incorporated in “The Education Act, 1908,” are allotted to the several education districts practically on the basis of population, as in each district there is offered annually one scholarship for each 4,000 or part of 4,000 children in average yearly attendance. The scholarships are open, with certain limitations, to children under fourteen years of age who have been attending a public school or schools in New Zealand for the three preceding years, and are awarded on an examination in the subjects prescribed for the Sixth Standard of the Public School Syllabus ; they are tenable for three years at a secondary school or its equivalent, but the tenure may on evidence of merit be extended for a fourth, or even for a fifth year, provided the holder is not over eighteen.

The value of each scholarship, in addition to free tuition, is £10 a year, to which £30 a year is added if the scholar has to live away from home, or actual travelling-expenses up to £10 a year if he has to travel more than four miles each way daily. The scholarships are awarded by the Education Boards on the results of an examination conducted by the Education Department, and the Boards exercise a certain control over the holders, and pay over to them from time to time the amounts falling due. With the Junior National Scholarships are now incorporated the Junior Queen's Scholarships, which were established by “The Victoria College Act, 1897,” to enable pupils of public schools in the Victoria College University District to attend a secondary school as a stepping-stone to a course at Victoria College. Twenty-one Junior Queen's Scholarships, of a total annual value of £463 10s., were held during 1908, but the last of them will come to an end in 1910. The number and value of the Junior National Scholarships current in December, 1908, in the several education

districts are shown in Table L1 of E.—6; the list may be summarised for the whole Dominion as follows:—

Number of scholarships,—							
Boys	..	..	..	..	..	..	57
Girls	..	..	..	..	..	..	32
Total							89
Number receiving boarding-allowance (included in the above total) .. .. . 40							
Number receiving travelling-allowance (similarly included) .. .. . 0							
Number held at secondary schools .. .. . 75							
Number held at district high schools .. .. . 14							
Total annual rate of payment as in December, 1908 .. .. .							£2,130

(ii.) *Education Board Scholarships.*—The scholarship funds of the Boards are provided by grants which, although not statutory, are of old standing, and amount to 1s. 6d. per head of the average attendance. The conditions of the scholarships are determined by regulations approved in the case of each Board by the Minister of Education. For the award of the Junior Scholarships all the Boards now use the Junior National Scholarship Examination, and for their Senior Scholarships nearly all use the Civil Service Junior Examination; but the awards themselves and the subsequent control of the holders are entirely in the hands of the Boards. The number and value of the Board Scholarships in the various districts are shown in Table L2, the totals of which are for the whole of New Zealand:—

Number of scholarships,—							
Boys	..	..	..	..	..	..	286
Girls	..	..	..	..	..	..	198
Total							484
Total expenditure of Boards on scholarships in 1908 .. .. .							£8,283

The most common period of tenure is two years, but in one district the scholarships are tenable for three years, and in three districts scholarships may be in deserving cases extended for a third year, if the funds of the Board admit. By the terms of the Act every Education Board scholarship is tenable at a secondary school or its equivalent, approved by the Board. With very few exceptions Education Board scholars hold secondary free places. The value of the scholarships varies considerably, apparently according to the view taken by each Board, as the circumstances of the different districts hardly seem to explain the great variation. Taking the whole of the districts we find that there are,—

At £40 per annum	..	..	..	..	..	87	scholarships.	
At £35	..	..	..	..	..	5	..	
At £30	..	..	..	..	..	49	..	
At £25	..	..	..	..	..	14	..	
Under £25 and not under £20 per annum	..	..	..	..	..	9	..	
At £15 per annum	..	..	..	..	..	1	..	
Under £15 and not under £10 per annum	..	..	..	..	..	154	..	
Under £10 and not under £5 per annum	..	..	..	..	..	99	..	
Under £5 per annum	..	..	..	..	..	66	..	
Total							484	..

#### *Finances of Secondary Schools.*

The income of secondary schools is derived from the following sources:—

- (i.) Rents from the special reserves allocated to them by statute;
- (ii.) Statutory grants, given in lieu of special reserves;
- (iii.) Income from the secondary-school reserves controlled by the School Commissioners, divided among the secondary schools in the several land districts in proportion to the number of pupils, exclusive of lower departments;
- (iv.) Interest upon moneys derived from the sale of reserves, and invested in accordance with the Education Reserves Act;

- (v.) Statutory capitation upon free pupils under the Act;
- (vi.) Capitation on pupils in classes recognised under the Manual and Technical Instruction Regulations;
- (vii.) Special grants from Government for buildings and apparatus;
- (viii.) Statutory subsidies on voluntary contributions;
- (ix.) Tuition fees of pupils;
- (x.) Boarding fees of pupils;
- (xi.) Miscellaneous sources, such as interest on moneys other than those obtained by the sale of reserves, donations and special endowments (for scholarships, prizes, &c.), rent of premises, &c.

The revenue derived from the sources (i) to (iv) is the income derived from endowments, and the "net annual income derived from endowments" is the average for the three preceding years of this revenue, less the expenditure upon the endowments and investments and upon buildings, and less mortgage and other charges.

Table J gives a summary of the receipts under the several heads named above, and of the various items of expenditure for the year.

TABLE J—SUMMARY OF THE ACCOUNTS OF INCOME AND EXPENDITURE FOR 1908 FURNISHED BY THE GOVERNING BODIES OF SECONDARY SCHOOLS.

<i>Receipts.</i>			<i>Expenditure.</i>		
	£	s. d.		£	s. d.
Credit balances on 1st January, 1908 ..	27,729	4 4	Liabilities on 1st January, 1906..	5,781	7 11
Endowment reserves sold and mortgage moneys repaid .. ..	4,517	14 11	Expenses of management .. ..	3,412	3 9
Rents of reserves .. ..	28,788	9 1	School salaries .. ..	52,340	3 1
Interest on moneys invested .. ..	3,781	6 10	Boarding-school accounts .. ..	15,390	11 9
Reserves Commissioners' payments ..	4,204	9 3	Scholarships and prizes .. ..	2,031	14
Government payments—			Printing, stationery, fuel, light, &c. ..	3,949	11 2
For manual instruction .. ..	881	18 6	Buildings, furniture, insurance, rent, and rates .. ..	40,102	11 4
For free places .. ..	24,538	15 10	On endowments .. ..	3,883	13 10
Subsidy on voluntary contributions ..	1,080	0 6	On manual instruction .. ..	754	12 7
Grants for buildings, sites, furniture, &c. Statutory grant (Marlborough High School) .. ..	16,164	2 3	Interest .. ..	1,895	2 5
Technical instruction—	400	0 0	Examination expenses.. ..	207	16 3
Government payments .. ..	2,207	10 4	Sundries not classified.. ..	5,934	9 8
From other sources .. ..	1,534	8 2	On technical instruction .. ..	4,043	15 3
School fees (tuition) .. ..	19,159	12 6	Credit balances, 31st December, 1908 ..	25,937	17 9
Boarding-school fees .. ..	16,892	16 5			
Books, &c., sold, and refunds .. ..	368	0 9			
Sundries not classified.. ..	6,789	7 1			
Debit balances, 31st December, 1908 ..	6,627	14 6			
	<u>£165,665</u>	<u>11 3</u>		<u>£165,665</u>	<u>11 3</u>

This table shows that, generally speaking, the finances of the secondary schools are in a sound condition, notwithstanding the large expenditure under the head of buildings. It may be as well to compare the chief items of income and expenditure in 1907 and 1908.

	1907.	1908.
	£	£
Income from reserves and endowments.. ..	33,636	36,774
Grants from Government (exclusive of building grants) ..	24,948	29,108
Building grants .. ..	9,473	16,164
Tuition fees .. ..	20,128	19,160
Salaries of staff .. ..	50,038	52,340
Expenses of management .. ..	3,421	3,412
Buildings, &c. .. ..	38,153	40,103

As the free-place system is extended, the amount received in tuition fees will naturally diminish, and the capitation grants from Government will increase.

The Education Amendment Act of last session will, by the introduction of a higher scale of capitation on free pupils, benefit not only those secondary schools which have few if any endowments, but also the more numerous class of schools whose income from endowments is small in proportion to the number of pupils; further, it will relieve from anxiety those schools where a necessity arises for a large building expenditure in any year, as the effect of the new sliding scale is that in any year the total of the net annual income from endowments and the capitation—that is, of the moneys available for the payment of staff salaries and working-expenses—cannot, with due safeguards, fall below £12 10s. per pupil—a sum which past experience shows to be just sufficient.

The new scale does not, like the former scale, proceed by jumps, but is a true sliding scale, increasing the rate of capitation for even the smallest decrease of the net annual income per pupil. The words of the schedule are, for this and other reasons, at first sight somewhat complicated, but their meaning may be clearly seen by the following statement of their effect at certain stages of the net annual income per head, which is found by dividing the net annual income from endowments, defined above, by the total number of pupils excluding the lower department, the latter being required to be self-supporting.

*Rate of Capitation payable on Free Pupils for certain Stages of the Net Annual Income per Head.*

Net Annual Income per Head.	Capitation per Free Pupil.	Total Income per Pupil.
£17 and over ..	£4 (or £6) ..	£21 and over.
£15 .. ..	£4/10 (or £6) ..	£19/10 at least.
£13 .. ..	£5 (or £6) ..	£18 ..
£11 .. ..	£5/10 (or £6) ..	£16/10 ..
£9 .. ..	£6 ..	£15 ..
£7 .. ..	£7 ..	£14 ..
£5 .. ..	£8 ..	£13 ..
£4 .. ..	£8/18 ..	£12/18 ..
£3 .. ..	£9/16 ..	£12/16 ..
£2 .. ..	£10/14 ..	£12/14 ..
£1 .. ..	£11/12 ..	£12/12 ..
Nil .. ..	£12/10 ..	£12/10 ..

There is the further proviso that in no case shall the capitation be less than ££ for every free place given in excess of the number of scholarships which a secondary school would be bound to give if it did not provide free places. Table J4 shows the operation of the former scale, in which the maximum rate of capitation was £10 15s., upon the finances of the secondary schools: it will be seen at once that, allowing the same rate of expenditure, the amended scale will place the poorly endowed schools in a far more favourable position—it will enable them to increase their efficiency by adding to their staffs, and, what is at least equally important, by raising the salaries paid to assistants, which are now in many cases far too low.

For the whole Dominion, if there are taken into account only the secondary schools that admit free pupils under the Act, we find from Table J4 the following state of things:—

Total number of pupils, excluding lower departments .. ..	3,614
Total net income from endowments (average of three years) .. ..	£11,105
Net income from endowments per head .. ..	£3·07
Approximate annual rate of capitation* .. ..	£9·16
Total available net income per head for salaries and management* .. ..	£12·23
<hr/>	
Total expenditure on salaries of staff .. ..	£42,929
"    management .. ..	£2,798
"    staff salaries, and management .. ..	£45,727
Expenditure per head on staff salaries .. ..	£11·88
"    on management .. ..	£0·77
Total expenditure per head on staff salaries, and management .. ..	£12·65

The last figure given shows as nearly as may be the actual cost per annum for each pupil, exclusive of those in lower departments. If we include all the secondary schools this average becomes £13·43 per head. Further details of the income and expenditure of the secondary schools will be found in Tables J5 and J; and H7 shows the several lower departments in operation at the close of the year, with the number of pupils, the proportionate expenditure on salaries, and the fees received for the pupils therein.

*General Remarks.*

*Length of Time spent at Secondary Schools.*—The average time spent at a New Zealand secondary school by each pupil who enters is about two and a half years. This is greater than the average duration of a pupil's stay at a high school in New York (2·04 years) or in Chicago (2·09 years); but less than the corresponding period in England (about 3½ years), Scotland (about 3 years), or Germany (about 4½ years). On the other hand the proportion of the population receiving secondary education at any one time in New Zealand is considerably larger than in Great Britain, although

\* Exclusive of capitation and subsidies for manual instruction.

less than it is in Germany, Switzerland, and some other European countries. Economic reasons are, no doubt, to some extent at the root of the difference; indeed, for a young country, the average length of a pupil's course in our secondary schools may be considered fair. It is not, however, long enough to secure the greatest benefit to the community from the secondary-school system, and every effort should be made to extend it. Among other things, the raising of the standard of the University Matriculation Examination, and still more the acceptance of a certificate of four years' satisfactory work in a secondary school as a qualification for admission to the University, would tend to increase the duration of secondary-school life, and to raise the standard of work both in the secondary schools and in the University colleges.

*Allotment of Time to Subjects.*—In the thirty schools of which account is taken the allotment of time to the several main subjects on the average is as follows:—

English	..	..	..	..	..	..	4.8 hours per week.
French	..	..	..	..	..	..	3.4 ..
Latin (generally non-compulsory)	..	..	..	..	..	..	4.4 ..
Arithmetic	..	..	..	..	..	..	2.6 ..
Mathematics (exclusive of arithmetic)	..	..	..	..	..	..	4.7 ..
Science	..	..	..	..	..	..	3.0 ..

These subjects are common to all. Other subjects treated more or less commonly are commercial work, history, geography, drawing in various forms, woodwork for boys, and cookery or dressmaking for girls. In seven of the schools German is taught to small classes of pupils, and in three Greek is reported as a subject of instruction. Advantage is taken in most cases to provide a commercial course, in which book-keeping and commercial correspondence and geography, or book-keeping and shorthand, supply the alternative. In general all but a few pupils take French; in Latin the proportion pursuing the study varies very greatly in different schools, but probably not less than 60 per cent. of the aggregate enrolment are Latin pupils. In science the branches commonly observed are, for boys, physics (elementary physical measurements, electricity and magnetism, heat) and chemistry, with physiology in some cases; for girls, botany or physiology and elementary physics. In nearly all the schools adequate attention is bestowed on physical instruction, and the usual games are entered into with zest.

Except in the substitution of needlework, cookery, or dressmaking for some other form of manual instruction (or, in some instances, in lieu of a second language), in the less frequent provision of an alternative course for commercial work, and the selection made of science subjects, the curriculum in girls' schools cannot be said to differ in a marked degree from that found in schools for boys only. In conformity, however, with the trend of public opinion, indications of a wider differentiation in the future are not wanting, and encouragement is given to the tendency by the inclusion of a course in domestic science, with its various practical applications, among the subjects serving to fulfil the conditions under which free places may be held. In mixed schools, where of necessity the staff is numerically small, the problem of the differentiation of courses must always retain a special difficulty; where girls alone are to be considered the problem is simpler. Marked differences in vocational aims notwithstanding, for which provision must always be made, there should be no very serious obstacle in such circumstances to the adoption of full alternative courses of instruction, in which a training in the domestic arts should take the foremost place, in conjunction with a good scheme of general education.

As regards the science of boys' schools, in one or two cases only does it appear that the science is chosen with a definite view to its bearing on agricultural or horticultural study. It would be well if there were more. In schools with suitable environment there seems to be no study that could be more profitably pursued or that could more worthily occupy the attention or enlist the enthusiasm of teachers with benefit to both boys and girls alike.

*District High Schools.*—The course of instruction usually followed in the secondary departments of the district high schools of the Dominion is drawn up largely with a view to prepare pupils for the Civil Service Junior, Matriculation, and Education Board Scholarship Examinations, and in a few schools the curriculum reaches up to the Civil Service Senior and Junior University Scholarship standard. The course includes English, Latin or French (generally the former), mathematics, geography,



commercial work, science, and one or more branches of manual training. Optional courses, one on the old grammar-school lines, and the other a modern programme, are now open to most of the pupils in our district high schools. The line of demarcation between these courses depends chiefly on the inclusion or exclusion of Latin or a modern language by the pupils, and, as a total of from four to five hours a week—roughly, a fifth of the time—may be regarded as a reasonable amount of time to be given to this subject, it will be seen that the inclusion or exclusion of a language apart from the mother-tongue is of great importance in arranging any course of instruction. In too many cases the curriculum itself and the methods of teaching are dominated by examination results. The true aim of education is lost sight of, and everything is subordinated to securing high marks in competitive examinations, and a large percentage of passes in non-competitive ones.

In some cases, however, an earnest effort is being made to solve the problem which confronts the various district high schools—namely, to arrange the programme in such a way that each school shall confer the maximum benefit on the majority of its pupils. As these schools have been established mainly in agricultural districts, it is obvious that in these cases the course of instruction should include subjects dealing directly or indirectly with the products of the soil. When these schools are established in mining districts the subjects chosen should have a bias towards mining pursuits. It is not intended that such technical education should be given as would fit pupils to carry on the work of a farmer, horticulturist, orchardist, miner, &c., but that the broad scientific principles upon which the practice of these various occupations rest should be carefully laid down as a basis for future practical work.

To compel all pupils, as is sometimes done, to take a course of instruction whether that course has a definite bearing on the work of their subsequent career or not, is indefensible; but, when it is borne in mind that few pupils remain at school more than two years, and a considerable proportion leave at the end of the first year, the urgent need of optional courses is beyond dispute. There are obvious limits to the introduction of optional courses—limits imposed by the number of rooms and by the numerical strength and qualifications of the staff.

At the same time reasonable consideration must be shown to those pupils who have obtained a certificate of proficiency or a scholarship, and will receive the whole of their secondary education in the district high schools. While the claims of a small minority of these boys and girls to an education which will prepare them for admission to the Civil Service, one of the professions, or a business career are indisputable, the rights of the great majority of the pupils should not be subordinated to the "craze for results," which unfortunately has still too much influence in our system of education. Indeed, it may be contended with much reason that the former class would be much better educated for their future callings if, while taking the subjects essential for their examinations, they received instruction in a science, such as elementary agriculture, closely connected with their immediate surroundings.

When the rural course for boys and the domestic course for girls, suggestive programmes for which were recently issued by the Department, are taken up with an earnest desire to carry them to a successful issue, our district high schools will be of far greater benefit than they are now to those districts in which they have been established.

## 2. MEMORANDUM FROM THE INSPECTOR - GENERAL OF SCHOOLS TO THE HON. THE MINISTER OF EDUCATION.

Education Department, Wellington, 16th August, 1909.

### SECONDARY EDUCATION.—SECONDARY SCHOOLS.

At the end of 1908 there were 30 schools usually included in the list of secondary schools. The "secondary schools" (within the definition of the Education Act) in actual operation were 28 in number, of which 3 were established by the Minister under the terms of section 94 of "The Education Act, 1908" (or the corresponding section of the earlier Act), and the remainder were "endowed secondary schools" established under the authority of special Acts. The other two secondary schools (the Wanganui Collegiate School and Christ's College Grammar School), although maintained partly out of the proceeds of endowments derived from grants by the Crown or the provincial authority, are not included in the list of secondary schools contained in the Schedule to the Education Act. Four other schools which depend in like manner partly upon the proceeds of lands held under Crown grants are in operation as secondary schools for Maoris (St. Stephen's, Auckland; Queen Victoria School for Maori Girls, Auckland; Maori Girls' School, Hukarere, Napier; and Te Aute College for Maori Boys, Hawke's Bay). In five cases the secondary schools named in the Eighth Schedule to the Act had not in December, 1908, been established by the governing bodies. One of these has been opened, however, since the beginning of the present year (1909). In addition to the above, 9 private secondary schools have applied for inspection under section 170 of the Act, and the district high schools, 62 in number, are also subject to inspection by the Inspectors of the Department. The total number of secondary schools of one kind or another subject to such inspection is therefore at the present time (August, 1909) 106. Strictly speaking, to these should be added the day classes of certain technical schools, in which the programme consists of secondary work having a technical bearing.

#### *Secondary Schools subject to Inspection by the Department (August, 1909).*

Endowed secondary schools within the meaning of section 89 of the Act (open)	26
Secondary schools established under section 94 .. .. .	3
Other endowed secondary schools—	
(a.) General .. .. .	2
(b.) For Maoris .. .. .	4
	6
District high schools .. .. .	62
Private secondary schools "subject to inspection"	9
Total .. .. .	106

*Duration of Secondary Course.*—The length of time during which a boy or girl attends a secondary school is a matter of very great importance from the point of view of the benefit to the individual pupil, which increases in a higher ratio than the number of years he spends at such a school; it is equally important in the general interests of the secondary schools, where the programme of work is as a rule drawn up to suit a four- or five-years' course, so arranged, however, that those compelled to leave at the end of two or three years may have gone through a course of work appropriate to their needs, and more or less complete in itself. This is, at all events, the ideal towards which the programmes of the best schools more or less approximate; a definite conception of this kind materially aids in securing a good organization of the several classes and the sound co-ordination of the several subjects of study and of the work of successive years. Examining the rolls of the secondary schools of New Zealand for 1908, we find the number of pupils of the various years to be as shown below, the figures for the New York and Chicago High Schools being given for comparison:—

#### *Secondary Schools: Duration of School Life.*

Year of Course.	Percentage of Roll in each Year of Course.		
	New Zealand.	New York.	Chicago.
First year .. .. .	40.1	48.9	47.8
Second year .. .. .	29.9	28.2	26.2
Third year .. .. .	16.6	15.1	15.8
Fourth or a higher year .. .. .	13.4	7.8	10.2
	100.0	100.0	100.0

The same facts may be presented in another form so as to show the percentage number of those who stay at a secondary school one, two, three, and four or more years respectively.

Length of Stay.	New Zealand.	New York.	Chicago.
One year .. .. .	25.4	42.5	45.2
Two years .. .. .	33.2	26.7	21.8
Three years .. .. .	8.0	14.9	11.7
Four or more years .. .. .	33.4	15.9	21.3
	100.0	100.0	100.0

As the numbers in each case were taken for the last term of the year, it would be fair to conclude that the average secondary-school life in New Zealand is about 2.49 years, in New York 2.04 years, and in Chicago 2.09 years.

*Scholarships.*—With further reference to the large variation in the value of Education Board scholarships, I make the following remarks :—

Probably all the scholarships of £20 and upwards are intended to meet the cost of board or possibly to aid in meeting it : if the latter be the case, children of less wealthy parents, especially if they belong to large families, may be placed at a disadvantage. Now, the lowest fee charged for board at a secondary school is £40 a year (see Table H1), and this amount does not seem unreasonable : it can hardly be expected that, generally speaking, a pupil can be boarded in a suitable private home, with facilities for individual study, for much less—almost certainly not, except with friends, for so little as £20 or £25 a year.

Again, scholarships of £5 or less in value are probably intended to meet the cost of books and stationery ; but, except in a certain number of cases in which travelling-expenses have to be paid, the reasons for the establishment of the 254 scholarships between £5 and £20 in value are not so clear : there may be an idea either that the State should bear part of the cost of maintenance of clever children attending a secondary school, or that the parents should be recompensed for the loss suffered through the withholding of the boy or girl from employment. No doubt the State gains by educating its citizens, the clever ones included, up to their full capacity ; and on other grounds, perhaps, the policy, which is sanctioned by long-established custom in New Zealand, might be plausibly defended : it may be remarked, however, that, outside the British Empire, even in the most democratic communities, such as Switzerland and the United States, such baits to parents would be looked upon as curiosities. In some cases the value of the scholarships has not been changed since the establishment of the system of free places in secondary schools ; yet it is evident that the holder of a scholarship of £10 with free tuition is in a very different position from the holder of a similar scholarship with £9 or £10 to pay in fees.

GEO. HOGBEN,  
Inspector-General of Schools.

3. DETAILED TABLES.

TABLE J 1.—ROLL AND FEES OF SECONDARY SCHOOLS, AS IN DECEMBER, 1908.

Schools.	Total Roll for Last Term of 1908.										Annual Rates of Fees.					
	Boys.					Girls.					Lower Depart- ments included in Total Roll.		Boarders included in Total Roll.		For Tuition.	For Board, exclusive of Tuition.
	Under 12 years.	12 to 15.	15 to 18.	Over 18.	Total.	Under 12 years.	12 to 15.	15 to 18.	Over 18.	Total.	Boys.	Girls.	Boys.	Girls.		
<i>A. Endowed Schools included in the Eighth Schedule to "The Education Act, 1908."</i>																
Whangarei High School ..	9	26	1	36	14	20				34					£ 8 8 0	£ .. ..
Auckland Boys' Grammar School ..	93	240	6	339											10 10 0	.. ..
"    Girls' Grammar School ..					60	140	6			206					10 10 0	.. ..
Thames High School ..	16	18		34	20	9				29					8 8 0	.. ..
New Plymouth High School ..	30	20		50	15	26	1			42					6 6 0	.. ..
Wanganui Girls' College ..					3	78	87	16		184	17		77		( 8 8 0 )	40 0 0
Wellington Boys' College ..	85	200	11	296									80		10 10 0	42 0 0
"    Girls' College ..					9	53	102	7		171	6				( 11 17 9 )	.. ..
Napier Boys' High School ..	9	49	66	9	133					25			35		9 11 0	40 0 0
"    Girls' High School ..					9	29	44	3		85	18		22		( 9 11 0 )	40 0 0
Marlborough High School ..	12	29	4	45	25	25	3			53					10 4 0	.. ..
Nelson Boys' College ..	5	56	99	14	174					16			73		8 11 0	42 0 0
"    Girls' College ..					7	50	80	9		146	12		37		( 12 0 0 )	42 0 0
Christchurch Boys' High School ..	8	72	111	10	201					22					12 0 0	.. ..
"    Girls' High School ..					3	87	108	4		202	6				( 7 10 0 )	.. ..
Rangiora High School ..	16	15		31	15	12	2			29					10 10 0	.. ..
Ashburton High School ..	14	33		47	14	27				41					12 12 0	.. ..
Timaru Boys' High School ..	24	44	1	69									9		9 9 0	45 0 0
"    Girls' High School ..					12	35	5			52					9 0 0	.. ..
Waitaki Boys' High School ..	10	78	77	10	175					25			127		12 0 0	( 49 4 0 )
"    Girls' High School ..					13	37				50					( 42 18 0 )	.. ..
Otago Boys' High School ..	90	163	5	258									13		7 10 0	43 10 0
"    Girls' High School ..					1	62	92	6		161					10 0 0	.. ..
Southland Boys' High School ..	57	73	4	134											10 0 0	.. ..
"    Girls' High School ..					51	64	29			144					10 0 0	.. ..
Total ..	32	701	1,214	75	2,022	32	598	908	91	1,629	88	59	337	136	..	..
<i>B. Secondary Schools established under Section 94 of the Education Act.</i>																
Palmerston North High School ..	1	38	48	1	88	18	30	1	49				8		10 10 0	40 19 0
Dannevirke High School ..	16	29	2	47	16	15	5	36							10 0 0	.. ..
Gore High School ..	19	15		34	10	12	1	23							..	.. ..
Total ..	1	73	92	3	169	44	57	7	108				8		..	..
<i>C. Endowed Secondary Schools not coming within the Definition of Section 89 of the Education Act.</i>																
Wanganui Collegiate School ..	31	128	21	180									141		12 0 0	51 0 0
Christ's College Grammar School ..	51	74	88	6	219								71		( 14 3 6 )	( 45 0 0 )
															( 11 0 6 )	( 42 0 0 )
															( 7 17 6 )	.. ..
Total ..	51	105	216	27	399								212		..	..
Grand total for 1908 ..	84	879	1,522	105	2,590	32	642	965	98	1,737	88	59	557	136	..	..
Grand total for 1907 ..	63	975	1,370	120	2,528	28	679	898	63	1,668	87	58	485	124	..	..
Difference ..	21	*96	152	*15	62	4	*37	67	35	69	1	1	72	12	..	..

\* Minus.

TABLE J2.—STAFF AND SALARIES OF SECONDARY SCHOOLS AS IN DECEMBER, 1908.\*

Schools.	Staff.				Salaries at Rate paid at End of Year.				Notes.
	Regular.		Part-time.		Regular Staff.		Part-time Teachers.		
	Men.	Women.	Men.	Women.	Men.	Women.	Men.	Women.	
<i>A. Endowed Schools included in the Eighth Schedule to the Education Act.</i>									
Whanareia High School ..	2	1	1	2	£ 440	£ 100	£ 8	£ 79	
Auckland Boys' Grammar School ..	13	..	1	..	3,786	..	50	..	
"    Girls' Grammar School ..	..	10	1	..	..	1,832	60	..	
Thames High School ..	2	1	..	..	500	150	..	..	
New Plymouth High School ..	2	2	2	..	670	365	49	..	
Wanganui Girls' College ..	..	11	1	5	..	2,025	130	120	Principal has residence.
Wellington Boys' College ..	14	..	4	..	3,380	..	80	..	
"    Girls' College ..	..	11	1	2	..	1,735	40	95	
Napier Boys' High School ..	7	..	..	..	1,482	..	..	..	Including £52 house allowance for second master; also, Principal has residence, and two assistant masters have board.
"    Girls' High School ..	..	6	..	1	..	1,045	..	30	
Marlborough High School ..	2	2	..	..	625	275	..	..	Principal has residence.
Nelson Boys' College ..	8	..	2	..	1,905	..	90	..	Principal and one assistant have board and residence, and one assistant has residence.
"    Girls' College ..	..	8	1	1	..	1,090	40	50	Principal and five assistants have board and residence.
Christchurch Boys' High School ..	12	..	5	..	3,512	..	250	..	
"    Girls' High School ..	..	10	1	7	..	1,702	45	340	
Rangiora High School ..	1	2	2	..	350	252	9	..	Principal has residence.
Ashburton High School ..	2	2	..	..	590	290	..	..	
Timaru Boys' High School ..	4	..	3	..	1,225	..	38	..	
"    Girls' High School ..	..	4	..	..	..	810	..	..	
Waitaki Boys' High School ..	6	..	1	1	1,330	..	15	36	Four assistants have board and residence.
"    Girls' High School ..	..	3	1	1	..	420	10	50	
Otago Boys' High School ..	11	..	3	..	3,178	..	160	..	Principal has residence.
"    Girls' High School ..	..	8	2	2	..	1,585	100	60	
Southland Boys' High School ..	6	..	3	..	1,504	..	94	..	
"    Girls' High School ..	..	6	2	1	..	1,010	77	12	
Total .. ..	92	87	37	23	24,477	14,686	1,345	872	
<i>B. Secondary Schools established under Section 94 of the Education Act.</i>									
Palmerston North High School ..	4	2	2	2	1,100	290	50	30	Including £50 house allowance for Principal.
Dannevirke High School ..	1	2	..	..	330	315	..	..	
Gore High School ..	2	1	..	..	562	135	..	..	Opened last term, 1908. Principal appointed beginning of 1909, and rate of salary as from that date added to salaries (£347 10s.) of assistants.
Total .. ..	7	5	2	2	1,992	740	50	30	
<i>C. Endowed Secondary Schools not coming within the Definition of Section 89 of the Education Act.</i>									
Wanganui Collegiate School ..	12	..	1	..	2,745	..	60	..	Eight assistants have board.
Christ's College Grammar School ..	13	..	3	..	3,453	..	231	..	Principal and five assistants have residence.
Total .. ..	25	..	4	..	6,198	..	291	..	
Grand total .. ..	124	92	43	25	32,667	15,426	1,686	902	

\* In five cases no secondary school has been maintained by the governing body: these are the Gisborne High School, Greymouth High School, Hokitika High School, Akaroa High School, Waimate High School; but in all cases the funds are applied, in whole or in part, to the establishment of scholarships or in aid of local district high schools or other secondary schools.

TABLE J3.—NUMBER OF PUPILS HOLDING SCHOLARSHIPS AND FREE PLACES IN SECONDARY SCHOOLS DURING THE LAST TERM, 1908.

School.	Number of Holders of Free Places. (Under Departmental Regulations.)									Annual Rate of Capitalization as for the Last Term.	Approximate Annual Payment.	Scholarship-holders.		
	Junior.			Senior.			Totals.					Included amongst Free-place Holders (Column 10).	Not also Holders of Free Places.	Pupils receiving Free Tuition, but not Holders of Government Free Places.
	Boys.	Girls.	Total.	Boys.	Girls.	Total.	Boys.	Girls.	Total.					
(1.)	(2.)	(3.)	(4.)	(5.)	(6.)	(7.)	(8.)	(9.)	(10.)	(11.)	(12.)	(13.)	(14.)	(15.)
<i>A. Endowed Schools included in the Eighth Schedule to "The Education Act, 1908."</i>														
<i>(i.) Providing Free Places under Section 93.</i>														
Whangarei High School	26	25	51	4	8	12	30	33	63	£ 10-75	£ 677	3	..	..
Auckland Grammar School	210	121	331	95	64	159	305	185	490	9-25	4,532	93	..	2
Thames High School..	30	17	47	..	4	4	30	21	51	9-25	471	..	..	..
New Plymouth High School	35	26	61	8	10	18	43	36	79	6-00	474	11	..	3
Napier High School ..	57	33	90	27	12	39	84	45	129	7-00	903	39	..	2
Wellington Colleges ..	116	25	141	45	11	56	161	36	197	9-25	1,822	58	3	5
Marlborough High School	20	39	59	13	10	23	33	49	82	10-75	881	16	..	1
Nelson Colleges ..	63	70	133	37	23	60	100	93	193	10-75	2,075	32	1	..
Rangiora High School	22	14	36	4	8	12	26	22	48	10-00	480	..	..	..
Christchurch Girls' High School	..	122	122	..	46	46	..	168	168	9-25	1,554	28	..	6
Christchurch Boys' High School	51	..	51	43	..	43	94	..	94	6-00	452	27	..	..
Ashburton High School	33	27	60	4	7	11	37	34	71	10-75	763	7	..	12
Timaru High School	45	30	75	19	18	37	64	48	112	6-00	672	21	..	..
Waitaki High School	34	25	59	27	14	41	61	39	100	8-00	800	7	..	..
Otago High School ..	152	114	266	84	44	128	236	158	394	8-00	3,152	49	..	..
Southland High School	83	80	163	35	45	80	118	125	243	10-75	2,612	34	..	..
<i>(ii.) Not providing Free Places under Section 93.</i>														
Wanganui Girls' College	..	..	..	..	..	..	..	..	..	..	..	..	15	15
<i>B. Secondary Schools established under Section 94 of the Education Act.</i>														
Palmerston North High School	49	34	83	18	9	27	67	43	110	10-75	1,182	9	..	..
Dannevirke High School	26	19	45	15	9	24	41	28	69	10-75	742	14	..	..
Gore High School ..	31	18	49	1	4	5	32	22	54	10-75	580	..	..	..
<i>C. Endowed Schools not included in the Eighth Schedule.</i>														
Wanganui Collegiate School	..	..	..	..	..	..	..	..	..	..	..	..	8	7
Christ's College Grammar School	..	..	..	..	..	..	..	..	..	..	..	..	23	42
Total ..	1,083	839	1,922	479	346	825	1,562	1,185	2,747	9-037	24,824	448	50	95

TABLE J4.—NET INCOME FROM ENDOWMENTS AND COST PER HEAD OF ROLL.

School.	Total Roll at December, 1908, exclusive of Lower Departments.	Total Net Income from Endowments (Average of Three Years).	Net Income from Endowments per Head of Roll.	Approximate Annual Rate of Capitalization.	Total Available Net Income per Head for Salaries and Management.	Total Expenditure on Salaries of Staff.	Total Expenditure on Management.	Total Expenditure on Staff Salaries and Management.	Expenditure per Head on Staff Salaries.	Per Expenditure Head on Management.	Total Expenditure per Head on Staff Salaries and Management.
(1.)	(2.)	(3.)	(4.)	(5.)	(6.)	(7.)	(8.)	(9.)	(10.)	(11.)	(12.)
<i>A. Endowed Schools included in Eighth Schedule to "The Education Act, 1908."</i>											
<i>(i.) Providing Free Places under Section 93.</i>											
Whangarei High School ..	70	..	..	10-75	10-75	636	36	672	9-09	0-51	9-60
Auckland Boys' and Girls' Grammar School	545	1,428	2-62	9-25	11-87	5,846	536	6,382	10-73	0-98	11-71
Thames High School ..	63	296	4-70	9-25	13-95	650	26	676	10-32	0-41	10-73
New Plymouth High School	92	841	9-14	6-00	15-14	1,398	75	1,473	15-19	0-81	16-00
Napier High Schools ..	175	1,350	7-71	7-00	14-71	2,199	134	2,333	12-56	0-77	13-33
Wellington Boys' and Girls' Colleges	461	1,435	3-11	9-25	12-36	5,231	242	5,473	11-35	0-52	11-87
Marlborough High School..	98	..	..	10-75	10-75	900	45	945	9-18	0-46	9-64
Nelson Colleges ..	292	205	0-70	10-75	11-45	3,376	255	3,631	11-56	0-87	12-43
Rangiora High School ..	60	19	0-32	10-00	10-32	600	23	623	10-00	0-38	10-38
Christchurch Girls' High School	196	173	0-88	9-25	10-13	2,082	60	2,142	10-62	0-31	10-93
Christchurch Boys' High School	179	2,776	15-51	6-00	21-51	3,880	200	4,080	21-67	1-12	22-79
Ashburton High School ..	88	..	..	10-75	10-75	880	53	933	10-00	0-60	10-60
Timaru High School ..	121	481	3-98	6-00	9-98	2,052	116	2,168	16-96	0-96	17-92
Waitaki High School ..	200	..	..	8-00	8-00	1,778	188	1,966	8-89	0-94	9-83
Otago High School ..	419	2,027	4-84	8-00	12-84	5,110	296	5,406	12-20	0-70	12-90
Southland High School ..	278	..	..	10-75	10-75	2,804	112	2,916	10-09	0-40	10-49
Totals ..	3,337	11,031	3-65	8-86	12-51	39,422	2,397	41,819	11-81	0-72	12-53
<i>(ii.) Not providing Free Places under Section 93.</i>											
Wanganui Girls' College ..	167	..	..	..	..	2,392	221	2,613	14-32	1-32	15-64
<i>B. Secondary Schools established under Section 94 of the Education Act.</i>											
Palmerston N. High School	137	74	0-54	10-75	11-29	2,034	395	2,429	14-85	2-88	17-73
Dannevirke High School ..	83	..	..	10-75	10-75	775	4	779	9-34	0-05	9-39
Gore High School*	57	..	..	10-75	10-75	698	2	700	12-24	0-04	12-28
Totals ..	277	74	0-27	10-75	11-02	3,507	401	3,908	12-66	1-45	14-11
<i>C. Endowed Schools not included in the Eighth Schedule.</i>											
Wanganui Collegiate School	180	..	..	..	..	3,752	259	4,011	20-84	1-44	22-28
Christ's College Grammar School	219	..	..	..	..	3,521	264	3,785	16-08	1-21	17-29
Totals ..	399	..	..	..	..	7,273	523	7,796	18-23	1-31	19-54
Grand totals ..	4,180	11,105	3-07	9-16	12-23	52,594†	3,542‡	56,136	12-58	0-85	13-43

\* Opened last term, 1908. Salary of Principal, appointed beginning of 1909, added to rates paid (£347 10s.) to assistants at end of 1908 in columns 7 and 9. † Excluding lower departments at high schools. ‡ Excluding high schools (5) not in operation.

TABLE J5.—INCOME OF SECONDARY SCHOOLS FOR THE YEAR 1908.

Schools.	Cr. Balances on 1st Jan., 1908.			From Endowments.			From Government.			School Fees.	Boarding-school Fees.	Sundries unclassified.	Dr. Balances, 31st Dec., 1908.	Totals.	Technical Classes (High School Boards which are also Controlling Authorities of Technical Classes.)	
	£	s.	d.	£	s.	d.	£	s.	d.							£
A. Endowed Schools included in the Eighth Schedule to "The Education Act, 1908."																
Whangarei High School ..	141	18	9	65	1	8	76	12	0	40	12	0	1,098	4	3	
Auckland Boys and Girls' Grammar School ..	2,683	16	3	5,349	8	7	592	18	0	566	13	0	18,940	11	4	
Thames High School ..	121	16	3	674	12	5	300	12	0	79	18	0	1,690	3	6	
New Plymouth High School ..	699	17	9	968	9	6	300	0	0	66	3	0	2,977	18	5	
Wanganui Girls' College ..	1,745	0	1	384	10	3	80	0	0	2,645	19	2	7,806	5	11	
Wellington College ..	1,794	8	11	3,469	18	2	31	19	7	3,109	0	3	18,169	6	3	
Napier High Schools ..	4,401	17	8	1,247	16	0	169	0	0	503	1	0	8,175	2	11	
Gasborne High School ..	3,704	17	3	150	0	0	189	14	0	..	..	..	4,697	16	5	
Marlborough High School ..	244	11	11	949	6	0	11	2	2	1,852	17	6	1,888	5	9	
Nelson College ..	1,424	4	0	180	15	2	290	0	0	..	..	..	15,197	10	1	
Greymouth High School ..	1,545	8	0	68	12	2	300	5	0	..	..	..	1,803	1	2	
Hokitika High School ..	347	2	0	39	0	0	55	5	0	..	..	..	1,889	13	0	
Rangiora High School ..	695	15	8	189	6	4	17	17	10	125	9	6	1,827	0	4	
Christchurch Boys' High ..	397	18	3	3,894	3	1	43	16	5	1,161	18	0	7,517	6	8	
Christchurch Girls' High ..	..	..	..	322	8	5	50	7	1	363	6	0	3,202	11	10	
Akaroa High School ..	..	..	..	133	0	11	..	..	..	..	..	..	572	12	8	
Ashburton High School ..	1,543	11	11	1,979	15	10	55	5	0	25	4	0	1,220	17	9	
Timaru High Schools ..	2,584	12	4	354	5	6	78	13	8	126	6	8	36	0	11	
Waimate High Schools ..	978	14	8	1,735	8	2	..	..	..	..	..	..	518	6	5	
Waitaki High Schools ..	1,175	12	4	2,403	14	3	177	7	4	886	15	0	3,055	13	10	
Otago High Schools ..	453	11	3	1,322	16	0	375	6	4	382	5	2	875	4	9	
Southland High Schools ..	..	..	..	..	..	..	253	19	7	500	0	0	5,912	7	10	
Totals ..	28,684	15	3	26,456	12	11	1,409	5	3	12,436	4	4	45,895	10	11	
Palmerston North High ..	464	15	2	..	..	..	56	10	3	85	16	0	2,354	15	0	
Dannevirke High School ..	163	2	0	..	..	..	271	0	0	754	16	3	1,929	12	7	
Gore High School ..	..	..	..	..	..	..	..	..	..	..	..	..	200	0	0	
Totals ..	627	17	2	..	..	..	327	10	3	840	12	3	4,484	7	3,676	
B. Secondary Schools established under Section 94 of the Education Act.																
Wanganui Collegiate School ..	..	..	..	1,603	15	10	..	..	..	3,267	12	0	732	3	7	
Christ's College Grammar ..	416	11	11	728	0	4	2,361	8	7	3,098	4	6	12,089	3	8	
Totals ..	416	11	11	2,331	16	2	..	..	..	6,365	16	6	732	3	7	
Grand totals ..	27,729	4	4	28,788	9	1	3,781	6	10	19,159	12	6	161,923	12	9	
														£165,665	11	3
C. Endowed Secondary Schools not coming within the Definition of Section 89 of the Education Act.																

From Government: a £48 8s. 6d.; b £1,456 16s. 10d.; c £708 5s.





TABLE J7.—SUMMARY OF SCHOOL COMMISSIONERS' ACCOUNTS FOR THE YEAR 1908.

Provincial District.					Receipts from Secondary Reserve.			Paid for Secondary Education.		
					£	s.	d.	£	s.	d.
Auckland	..	..	..	..	1,176	15	6	1,037	11	0
Taranaki	..	..	..	..	526	1	9	300	0	0
Wellington	..	..	..	..	2,137	15	3	300	0	0
Hawke's Bay	..	..	..	..	972	12	3	885	0	0
Marlborough	..	..	..	..	35	0	0	35	0	0
Nelson	..	..	..	..	468	6	1	290	0	0
Westland	..	..	..	..	777	18	0	500	0	0
Canterbury	..	..	..	..						
Otago	..	..	..	..	834	19	1	806	13	3
Totals for 1908					6,929	7	11	4,154	4	3
Totals for 1907					4,919	11	5	4,353	13	7

TABLE J8.—LOWER DEPARTMENTS OF SECONDARY SCHOOLS.

School.	Number of Pupils.	Proportion of Annual Rate of Salary of Teachers.			Total Fees Received for Year.		
		£	s.	d.	£	s.	d.
Wanganui Girls' College	17	120	13	11	136	3	4
Wellington College (Girls')	6	83	6	7	27	1	2
Napier High School (Boys')	25	141	13	4	196	8	6
Napier High School (Girls')	18	115	0	0	128	6	11
Nelson College (Boys')	16	160	0	0	163	16	0
Nelson College (Girls')	12	90	0	0	93	12	0
Christchurch Boys' High School	22	192	10	0	192	10	0
Christchurch Girls' High School	6	37	16	0	37	16	0
Waitaki High School (Boys')	25	150	0	0	187	10	0
Totals	147	1,090	19	10	1,163	3	11

TABLE J9.—LIST OF SECONDARY SCHOOLS INCORPORATED OR ENDOWED.

Name.	Act of Incorporation or Institution.	Remarks.
Whangarei High School	1878, No. 63, Local	Act may be repealed by <i>Gazette</i> notice under Act of 1885, No. 30.
Auckland Grammar School	1899, No. 11, Local.	
Auckland Girls' Grammar School	1906, No. 18, Local.	
Thames High School	1878, No. 54, Local.	
New Plymouth High School	1889, No. 2, Local.	
Wanganui Girls' College	1878, No. 42, Local	Board identical with Education Board.
Wanganui Collegiate School	[Nil]	Endowment, Reg. I, fol. 52. See also D.—16, 1866, p. 9.
Palmerston North High School	1904, No. 20, section 88	Scheme of control, <i>Gazette</i> , 1904, Vol. i, p. 908.
Wellington College and Girls' High School	1887, No. 17, Local.	
Dannevirke High School	1904, No. 20, section 88	Scheme of control, <i>Gazette</i> , 1905, Vol. ii, p. 2, 407
Napier High Schools	1882, No. 11, Local.	
Gisborne High School	1885, No. 8, Local	Not in operation in 1907.
Marlborough High School	1899, No. 27, Local	Board identical with Education Board.
Nelson College	1858, No. 38, and 1882, No. 15, Local.	
Greymouth High School	1883, No. 21, Local	Not in operation in 1907.
Hokitika High School	1883, No. 7, Local	Not in operation in 1907.
Rangiora High School	1881, No. 15, Local.	
Christchurch Boys' High School	1878, No. 30, Local	Under management of Canterbury College.
Christchurch Girls' High School	[Nil]	Under management of Canterbury College.
Christ's College Grammar School	Canterbury Ordinance, 1855	Endowment, <i>Gazette</i> , 1878, Vol. i, p. 131. A department of Christ's College, Canterbury
Akaroa High School	1881, No. 16, Local	Not in operation in 1907.
Ashburton High School	1878, No. 49, Local.	
Timaru High School	1878, No. 26, Local.	
Waimate High School	1883, No. 19, Local	Not in operation in 1907.
Waitaki High School	1878, No. 18, Local.	
Otago Boys' and Girls' High Schools	1877, No. 52, Local.	
Southland Boys' and Girls' High Schools	1877, No. 82, Local.	
Gore High School	1904, No. 20, section 88	Scheme of control, <i>Gazette</i> , 1908, Vol. ii, p. 1798.

TABLE K1.—DISTRICT HIGH SCHOOLS: STAFFS, SALARIES, ETC., IN SECONDARY DEPARTMENTS, 1908.

Education District.	Number of Schools.	Number of Teachers (excluding Head Teachers).			Number of Pupils.			Amounts paid in Salaries during the Year.					
		M.	F.	Total.	M.	F.	Total.	From Receipts from Government.					
								£	s.	d.			
Auckland	11	10	6	16	154	161	315	3,145	0	0	3,145	0	0
Taranaki	1	2	1	3	48	34	82	570	0	0	570	0	0
Wanganui	7	7	3	10	113	96	209	1,868	2	5	1,934	12	5
Wellington	10	10	10	20	188	262	450	4,054	12	4	4,054	12	4
Hawke's Bay	4	4	2	6	58	80	138	1,097	10	0	1,170	8	4
Nelson	4	2	3	5	50	63	113	940	0	0	940	0	0
Grey	1	1	1	2	9	26	35	355	0	0	415	0	0
Westland	1	1	1	2	18	19	37	355	0	0	460	0	0
North Canterbury	10	8	6	14	161	131	292	2,906	9	6	3,006	9	6
South Canterbury	4	4	2	6	68	61	129	1,341	18	9	1,341	18	9
Otago	9	5	9	14	130	158	288	2,771	16	8	2,771	16	8
Southland	4	1	3	4	20	34	54	691	5	9	691	5	9
Totals for 1908	66	55	47	102	1,017	1,125	2,142	20,096	15	5	20,501	3	9
Totals for 1907	64	53	48	101	1,243	1,209	2,452	19,960	13	10	20,338	0	6

TABLE K2.—FURTHER DETAILS RELATING TO SECONDARY DEPARTMENTS OF DISTRICT HIGH SCHOOLS.

Staff and Pupils of Secondary Departments of District High Schools at 31st December, 1908.

NOTE.—In the column for "Position on Staff," (4), "M" and "F" distinguish Sex, "H" means Head of a School, and "A" Assistant in the Secondary Department.

1 School.	2 Name of Teacher.	3 Classification or Degree.	4 Position on Staff.	Annual Rates of Salary paid by Govern- ment at 31st December, 1908.			Number of Pupils.			
				5 Under Part VI of the 4th Schedule.	6 Additions to Salary under Sections 11 and 15 of the Amend- ment Act, 1905.	7 Total.	8 M.	9 F.	10 Total	
Auckland— Aratapu .. ..	Hockin, Harry .. ..	D1	H.M.	£ 30	£ s. d.	£ s. d.		6	10	16
	Lewis, Percy G. .. ..	D3	A.M.	180	..	180 0 0	..	..	..	..
Cambridge .. ..	Walker, William R. C. .. ..	B1	H.M.	40	..	40 0 0	..	18	14	32
	Ranson, John U. .. ..	B.A.	A.M.	190	..	190 0 0	..	..	..	..
Coromandel .. ..	Gavey, Annie L. .. ..	C2	A.F.	125	..	125 0 0	..	..	..	..
	Tanner, Thomas B. .. ..	D1	H.M.	30	..	30 0 0	..	16	12	28
Hamilton West .. ..	Gatland, Alfred H. .. ..	D2	A.M.	180	..	180 0 0	..	..	..	..
	Worsley, William H. .. ..	D1	H.M.	40	..	40 0 0	..	26	25	51
Normal .. ..	Wilson, Ebenezer .. ..	M.A., A1	A.M.	190	..	190 0 0	..	..	..	..
	Collins, Edith C. .. ..	B.A., B4	A.F.	125	..	125 0 0	..	..	..	..
Onehunga .. ..	Cousins, Herbert G. .. ..	M.A., A1	H.M.	40	..	40 0 0*	..	6	25	31
	Shrewsbury, Elsie .. ..	M.A., A1	A.F.	200	..	200 0 0	..	..	..	..
Paeroa .. ..	McIntosh, William N. .. ..	D1	H.M.	50	..	50 0 0	..	29	27	56
	Kenny, Arthur A. .. ..	D1	A.M.	220	..	220 0 0	..	..	..	..
Pukekohe West .. ..	Patterson, Florence I. .. ..	M.A., B3	A.F.	165	..	165 0 0	..	..	..	..
	Monro, Agnes S. .. ..	D3	A.F.	135	..	135 0 0	..	..	..	..
Tauranga .. ..	Murphy, Francis .. ..	C1	H.M.	40	..	40 0 0	..	11	17	28
	Meredith, Charles .. ..	C2	A.M.	190	..	190 0 0	..	..	..	..
Te Aroha† .. ..	Algie, Ronald M. .. ..	..	A.M.	125	..	125 0 0	..	..	..	..
	Flavell, Dennis R. .. ..	D1	H.M.	30	..	30 0 0	..	15	8	23
Waihi .. ..	Roberts, William P. .. ..	D2	A.M.	180	..	180 0 0	..	..	..	..
	Benge, Alfred .. ..	D1	H.M.	30	..	30 0 0	..	10	9	19
Taranaki— Stratford .. ..	Robertson, May B. .. ..	B.A.	A.F.	180	..	180 0 0	..	..	..	..
	Stewart, Alexander A. .. ..	..	A.M.	150	10 0 0	160 0 0	..	12	6	18
Wanganui— Bulls‡ .. ..	Tyrer, Florence A. R. .. ..	D1	H.M.	50	..	50 0 0	..	48	34	82
	Gatland, Arthur R. .. ..	B.A.	A.M.	220	..	220 0 0	..	..	..	..
Eltham .. ..	Webb, Mary .. ..	M.A.	A.F.	165	..	165 0 0	..	..	..	..
	Bowler, Frederick .. ..	..	A.M.	135	..	135 0 0	..	..	..	..
Feilding .. ..	Gray, Joseph H. .. ..	D1	H.M.	20	..	20 0 0	..	6	14	20
	Gray, James H. .. ..	C3	A.M.	150	..	150 0 0	..	..	..	..
Hawera .. ..	Thomas, Taliesin .. ..	D1	H.M.	20	..	20 0 0	..	8	5	13
	Menzies, William G. .. ..	B.A., B3	A.M.	150	..	150 0 0	..	..	..	..
Marton .. ..	Hill, John C. .. ..	C1	H.M.	40	..	40 0 0	..	21	12	33
	Ritchie, James .. ..	M.A., M.Sc., A3	A.M.	190	..	190 0 0	..	..	..	..
Patea .. ..	Wyatt, Gladys .. ..	C4	A.F.	125	..	125 0 0	..	..	..	..
	Strack, Conrad A. .. ..	D1	H.M.	40	..	40 0 0	..	25	21	46
Wellington— Carterton .. ..	Niven, James .. ..	M.A., M.Sc., A1	A.M.	190	10 0 0	200 0 0	..	..	..	..
	Strack, Constance T. .. ..	B.A., B4	A.F.	125	..	125 0 0	..	..	..	..
Greytown .. ..	Mossman, Edwin .. ..	C1	H.M.	30	..	30 0 0	..	9	6	15
	Wilkes, Frederick J. .. ..	M.A., B3	A.M.	180	20 0 0	200 0 0	..	..	..	..
Hutt .. ..	O'Dea, Patrick .. ..	M.A., LL.B., A1	H.M.	30	..	30 0 0	..	16	19	35
	Martin, Frederick W. .. ..	C3	A.M.	180	..	180 0 0	..	..	..	..
Levin .. ..	Aitken, James .. ..	B.A., B1	H.M.	45	..	45 0 0	..	28	19	47
	Rutherford, John R. .. ..	M.A., A1	A.M.	200	..	200 0 0	..	..	..	..
Masterton .. ..	Mahony, Ella .. ..	..	A.F.	135	..	135 0 0	..	..	..	..
	Burns, Andrew N. .. ..	B.A., B1	H.M.	40	..	40 0 0	..	19	19	38
Newtown .. ..	Talbot, Arthur E. .. ..	M.A., D2	A.M.	190	..	190 0 0	..	..	..	..
	Scott, Florence .. ..	B.A.	A.F.	125	..	125 0 0	..	..	..	..
Petone .. ..	Charters, Alexander B. .. ..	M.A., B1	H.M.	80	..	80 0 0	..	9	9	18
	King, Herbert William .. ..	C2	A.M.	180	..	180 0 0	..	..	..	..
Normal .. ..	Yeats, Duncan M. .. ..	D1	H.M.	40	..	40 0 0	..	7	15	22
	Lyne, Christopher J. .. ..	B.A., B3	A.M.	190	..	190 0 0	..	..	..	..
Pahiatua .. ..	Livingstone, Fanny R. .. ..	M.A.	A.F.	125	..	125 0 0	..	..	..	..
	McIntyre, James .. ..	D1	H.M.	30	10 0 0	40 0 0	..	21	21	42
Petone .. ..	Harding, Albert J. .. ..	C2	A.M.	180	10 0 0	190 0 0	..	..	..	..
	Jackson, William H. .. ..	D1	H.M.	50	..	50 0 0	..	49	45	94
Wellington— Greytown .. ..	Bee, John G. .. ..	M.A., A1	A.M.	220	..	220 0 0	..	..	..	..
	Williams, Ethel .. ..	B.A., B2	A.F.	165	..	165 0 0	..	..	..	..
Wellington— Hutt .. ..	McLandress, Isabella .. ..	M.A., B2	A.F.	135	..	135 0 0	..	..	..	..
	Parkinson, Henry A. .. ..	M.A., B1	H.M.	50	..	50 0 0	..	14	26	40
Wellington— Levin .. ..	Low, Benjamin H. .. ..	B.A., B.Sc., B1	A.M.	220	..	220 0 0	..	..	..	..
	Rowley, Elizabeth M. .. ..	M.A., A1	A.F.	165	..	165 0 0	..	..	..	..
Wellington— Normal .. ..	Webb, J. Costin .. ..	B.A., B1	H.M.	40	..	40 0 0*	..	6	24	30
	Caughley, John .. ..	M.A., B1	A.M.	280	..	280 0 0	..	..	..	..
Wellington— Pahiatua .. ..	Thomas, Joseph .. ..	C1	H.M.	40	..	40 0 0	..	7	20	27
	Baker Gabb, Mrs. M. .. ..	B.A., B1	A.F.	190	..	190 0 0	..	..	..	..
Wellington— Petone .. ..	Johnson, John .. ..	D5	A.M.	125	..	125 0 0	..	..	..	..
	Horne, James .. ..	D1	H.M.	50	..	50 0 0	..	25	36	61
Wellington— Wellington .. ..	Lynskey, James H. .. ..	C1	A.M.	220	20 0 0	240 0 0	..	..	..	..
	Myers, Phoebe .. ..	B.A., B2	A.F.	165	..	165 0 0	..	..	..	..
Wellington— Wellington .. ..	Ross, Christina .. ..	B.A.	A.F.	135	..	135 0 0	..	..	..	..

\* Amount also included in Table No. 8, E-2.  
opened 27th January, 1908.

† Secondary department opened 3rd February, 1908.

‡ Secondary department

## STAFF AND PUPILS OF SECONDARY DEPARTMENTS OF DISTRICT HIGH SCHOOLS AT 31ST DECEMBER, 1908—continued.

1 School.	2 Name of Teacher.	3 Classification or Degree	4 Position on Staff.	Annual Rates of Salary paid by Government at 31st December, 1908.			Number of Pupils.			
				5 Under Part VI of the 4th Schedule.	6 Addition to Salary under Sections 11 and 15 of the Amend- ment Act, 1905.	7 Total.	8 M.	9 F.	10 Total.	
										£
Wellington—continued.										
Terrace ..	MacMorran, George ..	D1	H.M.	50		50 0 0	31	47	78	
	King, Eustace ..	M.A., B.Sc., B1	A.M.	220	20 0 0	240 0 0	..	..	..	
	Wilson, Marion K. ..	M.A., A2	A.F.	165	..	165 0 0	..	..	..	
	Roberts, Florence G. ..	B.A., C2	A.F.	135	..	135 0 0	..	..	..	
Hawke's Bay—										
Gisborne ..	Rowley, Francis J. ..	B.A., B1	H.M.	30	10 0 0	40 0 0	21	25	46	
	Kinder, John ..	B.A., B2	A.M.	180	10 0 0	190 0 0	..	..	..	
	Hunt, Margaret L. ..	C5	A.F.	125	..	125 0 0	..	..	..	
Hastings ..	Pegler, Leonard F. ..	B.A., B1	H.M.	40	5 0 0	45 0 0	18	25	43	
	Stephens, Thomas J. O. ..	..	A.M.	190	10 0 0	200 0 0	..	..	..	
	Hodgson, Ruth J. ..	C3	A.F.	125	10 0 0	135 0 0	..	..	..	
Waipawa*	Watson, John D. ..	M.A., B1	H.M.	30	..	30 0 0	9	15	24	
	Keane, Jeremiah ..	D3	A.M.	180	..	180 0 0	..	..	..	
Woodville ..	Stevenson, Andrew ..	C1	H.M.	20	..	20 0 0	10	15	25	
	Hoult, William H. ..	M.A., A4	A.M.	150	..	150 0 0	..	..	..	
Nelson—										
Motueka ..	Griffin, John J. ..	C1	H.M.	20	..	20 0 0	8	8	16	
	Stoddart, Frances ..	B.A., B2	A.F.	150	..	150 0 0	..	..	..	
Reefton ..	Harkness, J. H. ..	B.A., B1	H.M.	20	..	20 0 0	11	8	19	
	Slowey, Anastasia J. ..	M.A.	A.F.	150	..	150 0 0	..	..	..	
Takaka ..	Boyes, William H. ..	D1	H.M.	30	..	30 0 0	11	21	32	
	Ainsworth, Florence E. ..	B.A., B2	A.M.	180	..	180 0 0	..	..	..	
Westport ..	Neve, Frederick ..	M.A., B1	H.M.	40	..	40 0 0	20	26	46	
	Gifford, Arthur J. ..	M.A., A1	A.M.	190	35 0 0	225 0 0	..	..	..	
	McElwee, May E. ..	D3	A.F.	125	..	125 0 0	..	..	..	
Grey—										
Greymouth ..	Adams, Alan A. ..	D1	H.M.	40	..	40 0 0	9	26	35	
	Woods, Robert T. ..	B.A., B1	A.M.	190	..	190 0 0	..	..	..	
	Thompson, Marion ..	D2	A.F.	125	..	125 0 0	..	..	..	
Westland—										
Hokitika ..	Wake, Hugh G. ..	B.A., B1	H.M.	40	..	40 0 0	18	19	37	
	Williams, Henry ..	C1	A.M.	190	..	190 0 0	..	..	..	
	Olliver, Margaret ..	M.A., M.Sc.	A.F.	125	..	125 0 0	..	..	..	
North Canterbury—										
Akaroa ..	Hall, Charles ..	C2	H.M.	20	10 0 0	30 0 0	14	11	25	
	Gray, Alexander ..	A1	A.M.	150	30 0 0	180 0 0	..	..	..	
Amberley ..	Anderson, John ..	C1	H.M.	20	..	20 0 0	4	5	9	
	Hardey, Mary I. ..	C4	A.M.	150	..	150 0 0	..	..	..	
Christchurch West	Hardie, Charles D. ..	B.A., B1	H.M.	60	..	60 0 0	71	45	116	
	Waller, Francis D. ..	B.A., B1	A.M.	240	75 19 4	315 19 4	..	..	..	
	Malcolm, Thornton G. ..	C1	A.M.	150	61 0 0	211 0 0	..	..	..	
	Hansard, George A. ..	C3	A.M.	190	..	190 0 0	..	..	..	
	Wilkinson, Maria L. ..	B.A.	A.F.	165	..	165 0 0	..	..	..	
	Hansard, Edith G. ..	B.A., B4	A.F.	135	..	135 0 0	..	..	..	
Darfield ..	Pennington, Benjamin ..	C1	H.M.	30	..	30 0 0	2	7	9	
	Williams, Florence A. ..	B3	A.F.	180	..	180 0 0	..	..	..	
Kaipoi ..	Bean, William D. ..	C1	H.M.	30	..	30 0 0	6	7	13	
	Mayne, Arthur J. ..	M.A., B2	A.M.	180	..	180 0 0	..	..	..	
Kaikoura Town	Allison, Herbert H. ..	D1	H.M.	20	..	20 0 0	7	13	20	
	Herrriott, Maud E. ..	M.A.	A.F.	150	..	150 0 0	..	..	..	
Lincoln ..	Cokson, Arthur ..	D1	H.M.	20	..	20 0 0	6	10	16	
	Osborn, Mabel E. ..	B.A., B4	A.F.	150	..	150 0 0	..	..	..	
Lyttelton ..	Just, Emile U. ..	D1	H.M.	30	..	30 0 0	17	6	23	
	Burley, William E. ..	B.A., B2	A.M.	180	55 5 9	235 5 9	..	..	..	
Normal ..	Aschman, Christopher T. ..	C1	H.M.	40	..	40 0 0†	14	11	25	
	McIlraith, James W. ..	M.A., LL.B., A.	A.M.	275	..	275 0 0	..	..	..	
Southbridge	Gates, Thomas A. ..	D1	H.M.	30	..	30 0 0	20	16	36	
	Glanville, Gertrude M. ..	C1	A.F.	180	..	180 0 0	..	..	..	
South Canterbury—										
Geraldine ..	Montgomery, John R. ..	M.A., B1	H.M.	20	..	20 0 0	6	4	10	
	Budd, Alice M. ..	M.A.	A.F.	150	..	150 0 0	..	..	..	
Pleasant Point	Thomas, William ..	M.A., A1	H.M.	30	..	30 0 0	9	22	31	
	Tait, George Allan ..	C4	A.M.	180	..	180 0 0	..	..	..	
Temuka ..	McLeod, Murdoch ..	B.A., B1	H.M.	40	47 1 0	87 1 0	20	12	32	
	Gilmour, William O. ..	D3	A.M.	190	..	190 0 0	..	..	..	
	Reid, Jessie Begg ..	B.A., B3	A.F.	125	..	125 0 0	..	..	..	
Waimate ..	Pitcaithly, George ..	B.A., B1	H.M.	45	135 18 8	180 18 8	33	23	56	
	Laing, Thomas M. M. ..	B.A., B2	A.M.	200	31 3 4	231 3 4	..	..	..	
	Foweraker, Charles E. ..	C4	A.M.	135	..	135 0 0	..	..	..	
Otago—										
Balclutha ..	McElrea, William B. E. ..	B1	H.M.	40	23 5 6	63 5 6	23	13	36	
	Vacant† ..	..	..	190	..	190 0 0	..	..	..	
	Dare, Olive J. M. ..	B3	A.F.	125	..	125 0 0	..	..	..	
	Allan, Mary K. ..	E1	§	..	13 9 6	13 9 6§	..	..	..	
Lawrence ..	Stenhouse, John ..	C1	H.M.	45	107 2 0	152 2 0	22	30	52	
	Straoban, James E. ..	M.A., B2	A.M.	200	..	200 0 0	..	..	..	
	Paterson, Janet ..	M.A., B1	A.F.	135	..	135 0 0	..	..	..	
	Darton, Henry L. ..	D1	§	..	81 6 6	81 6 6§	..	..	..	
	Fowler, Jane B. ..	E1	§	..	38 3 6	38 3 6§	..	..	..	
Mosgiel ..	Pinder, Edward ..	M.A., A1	H.M.	30	16 19 0	46 19 0	19	11	30	
	Bressey, Florence F. ..	M.A., A3	A.F.	180	..	180 0 0	..	..	..	

\* Secondary department opened 1st February, 1908.

† Amount also included in Table No. 8, E-2.

‡ Position temporarily filled by relieving teachers.

§ Assistants on the primary staffs who receive additions to salary under section 28 (e) of the Act.

## STAFF AND PUPILS OF SECONDARY DEPARTMENTS OF DISTRICT HIGH SCHOOLS AT 31ST DECEMBER, 1908—continued.

1 School.	2 Name of Teacher.	3 Classification or Degree.	4 Position on Staff.	5 Annual Rates of Salary paid by Government at 31st December, 1908.			6 Additions to Salary under Sections 11 and 15 of the Amend- ment Act, 1905.			7 Number of Pupils.			
				Under Part VI of the 4th Schedule.	£	s.	d.	£	s.	d.	8 M.	9 F.	10 Total.
Otago—continued.													
Naseby ..	Malcolm, James P.	D1	H.M.	20	..	..	20	0	0	..	3	8	11
	Robertson, Thomas G.	..	A.M.	150	..	..	150	0	0	..	..	..	..
Normal ..	Marshall, Angus ..	B.A., B1	H.M.	40	..	..	40	0	0*	..	18	35	53
	Hardy, James W.	B1	A.M.	200	..	..	200	0	0	..	..	..	..
	McArthur, Grace C.	C1	A.F.	135	..	..	135	0	0	..	..	..	..
Palmerston ..	Patterson, Thomas A.	M.A., B1	H.M.	20	..	..	20	0	0	..	11	14	25
	Cox, Annie H.	M.A., A4	A.F.	150	..	..	150	0	0	..	..	..	..
Port Chalmers ..	Booth, George F.	B.A., B1	H.M.	30	..	..	30	0	0	..	4	16	20
	Heatley, Frederick J.	M.A., M.Sc., A2	A.M.	180	..	..	180	0	0	..	..	..	..
	Grav, James H.	B.A., B1	+	..	..	24 10 0	24	10	0†	..	..	..	..
	Orkney, Eva M.	C1	+	..	..	11 0 0	11	0	0†	..	..	..	..
Tapanui ..	Stewart, John N.	C1	H.M.	20	..	10 0 0	30	0	0	..	10	12	22
	Campbell, Eliza ..	M.A., A3	A.F.	150	..	30 0 0	180	0	0	..	..	..	..
Tokomairiro ..	Graham, Walter B.	C1	H.M.	40	..	..	40	0	0	..	20	19	39
	Ferguson, Albert J.	M.A., P2	A.M.	190	..	..	190	0	0	..	..	..	..
	Beckingsale, Lucy	B.A., B3	A.F.	125	..	..	125	0	0	..	..	..	..
	McLaren, Mary ..	E1	+	..	..	8 18 0	8	18	0†	..	..	..	..
Southland—													
Arrow ..	Orr, James	D1	H.M.	20	..	..	20	0	0	..	4	5	9
	Copland, Catherine	C4	A.M.	150	..	..	150	0	0	..	..	..	..
Lumsden ..	Clark, William H.	B.A., B1	H.M.	20	..	..	20	0	0	..	5	13	8
	Steel, Annie ..	..	A.F.	150	..	..	150	0	0	..	..	..	..
Riverton ..	Hewat, Ebenezer C.	B.A., B1	H.M.	20	..	..	20	0	0	..	6	9	15
	Hamilton, Janet A.	D2	A.F.	150	..	..	150	0	0	..	..	..	..
Winton ..	Hutchinson, James B.	C1	H.M.	20	..	..	20	0	0	..	5	7	12
	Dalrymple, Helen K.	B.A.	A.F.	150	..	..	150	0	0	..	..	..	..
				19, 115	1, 021	2 1	20, 136	2 1	1, 017	1, 125	2, 142		

\* Amount also included in Table No. 8, E-2.

† Assistants on the primary staffs who receive additions to salary under section 82 (e) of the Act.

TABLE LI.—NUMBER AND VALUE OF JUNIOR NATIONAL SCHOLARSHIPS.

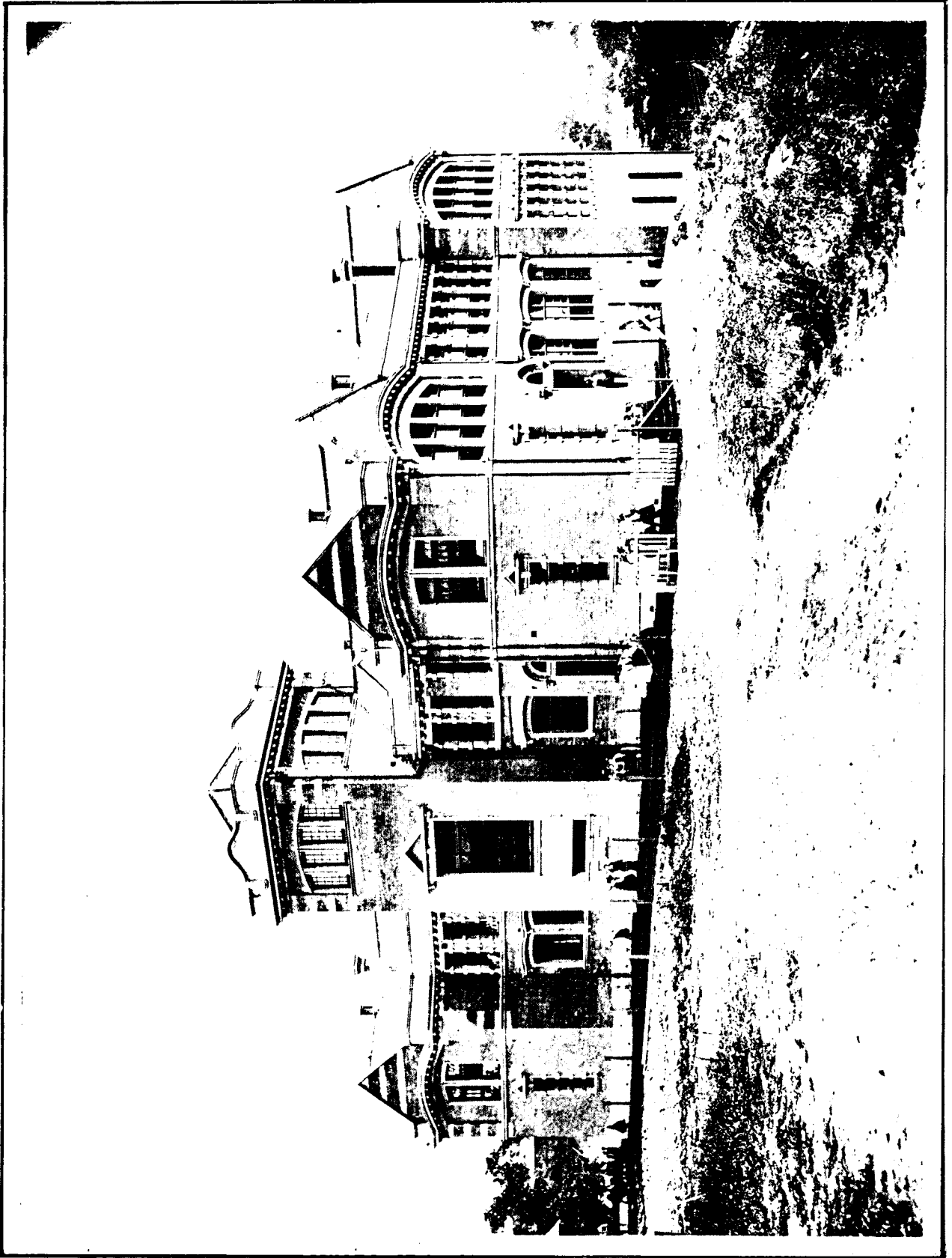
Education District.	Total Number held in December, 1908.			Receiving Boarding- allowance (included in Total Number).			Receiving Travelling- allowance (included in Total Number).			Number held at Secondary Schools.	Number held at District High Schools.	Total Rate of Annual Pay- ment as at December, 1908.
	Boys.	Girls.	Total.	Boys.	Girls.	Total.	Boys.	Girls.	Total.			
Auckland ..	11	6	17	5	2	7	..	..	..	17	..	380
Taranaki ..	2	1	3	1	..	1	..	..	..	..	3	60
Wanganui ..	4	4	8	..	3	3	..	..	..	6	2	210
Wellington ..	6	1	7	1	..	1	..	..	..	7	..	100
Hawke's Bay ..	6	1	7	5	1	6	..	..	..	6	1	250
Marlborough ..	..	3	3	..	1	1	..	..	..	3	..	60
Nelson ..	2	2	4	2	1	3	..	..	..	4	..	130
Grey ..	2	1	3	2	..	2	..	..	..	2	1	90
Westland ..	2	2	4	..	..	..	..	..	..	..	4	40
North Canterbury ..	8	5	13	4	3	7	..	..	..	13	..	340
South Canterbury ..	1	2	3	..	..	..	..	..	..	1	2	30
Otago ..	9	1	10	2	1	3	..	..	..	9	1	190
Southland ..	4	3	7	3	3	6	..	..	..	7	..	250
Totals ..	57	32	89	25	15	40	..	..	..	75	14	2,130

NOTE.—Twenty-one Junior Queen's Scholarships were held in 1908—14 by boys and 7 by girls. The last of these scholarships will expire in 1910; they are now incorporated with the Junior National Scholarships.

TABLE L2.—NUMBER AND VALUE OF EDUCATION BOARD SCHOLARSHIPS.

Education Districts.	Number held in Dec., 1908.		Total.	Period of Tenure.	Boards' Expenditure on Scholarships in 1908.	Annual Value, &c.
	Boys.	Girls.				
Auckland ..	53	30	83	Years.	£ s. d.	35 at £40, 48 at £10.
Taranaki ..	13	8	21	2	317 0 6	5 at £35, 1 at £12, 15 at £10.
Wanganui ..	16	15	31	2 or 3	662 14 6	8 at £40, 4 at £23 10s., 4 at £21, 1 at £15, 14 at £10.
Wellington ..	40	27	67	2	900 6 0	13 at £40, 3 at £9, 1 at £7 4s., 4 at £6 5s., 46 at £5.
Hawke's Bay ..	38	23	61	2	557 0 0	12 at £30, 1 at £12 10s., 9 at £10, 2 at £8 10s., 1 at £7 10s., 36 at £2 10s.
Marlborough ..	5	7	12	1 or 2	163 10 0	3 at £25, 4 at £10, 5 at £2.
Nelson ..	12	22	34	2	382 2 6	6 at £40, 4 at £25, 24 at £1 5s.
Grey ..	3	4	7	2	86 10 0	1 at £26, 6 at £8.
Westland ..	3	2	5	2	58 0 0	1 at £24, 3 at £10, 1 at £4.
North Canterbury ..	29	21	50	2	902 19 6	17 at £30, 33 at £10.
South Canterbury ..	21	8	29	2	336 4 11	6 at £27, 1 at £12, 22 at £7.
Otago ..	37	19	56	2 or 3	1,291 2 10	25 at £40, 25 at £10, 6 at £6.
Southland ..	16	12	28	2 or 3	640 0 0	20 at £30, 8 at £5.
Totals, 1908..	286	193	484	..	8,282 16 4	
Totals, 1907..	294	197	491	..	8,546 14 11	





THE GIRLS' GRAMMAR SCHOOL, AUCKLAND, OPENED IN APRIL, 1909.

— E. S. 100. A. 103.



THE PHYSICS ROOM. A LESSON IN PHYSICS AT MOUNT ALBERT.



THE GALLERY OVERLOOKING THE HALL.

THE GIRLS' GRAMMAR SCHOOL, AUCKLAND.



## 1. REPORT OF THE BOARD OF GOVERNORS.

*The School.*—At the beginning of the year 381 boys and 219 girls were in the two schools, of whom 335 boys and 199 girls held free places under the regulations, and for whose tuition the Government paid at the rate of £9 5s. capitation for each of the three terms. The Board at the end of the year removed the girls' school to the new school building in Howe Street erected for them, on which there was spent up to the end of 1908 £11,079 5s. 5d., of which the Government has provided £5,000, and has promised £1,000 for the formation of grounds, fencing, and furniture. The Hon. the Minister of Education has kindly consented to formally open it before the Easter holidays.

The boys' school has thus now room to accommodate some 500 pupils as it did in 1905.

The work of the girls' school during the year 1908 was, as in the previous year, much hampered by being carried on in two separate buildings, several of the classes being held in St. Paul's schoolroom.

*Mistresses.*—In October Miss Blades was granted leave of absence by the Board till the end of the year. The staff was joined on the 14th October, 1908, by Miss F. E. A. Grellet, who arrived from London, and entered upon her duties as French and German mistress, to which position she was appointed in London on behalf of the Board by the Hon. W. P. Reeves, High Commissioner for New Zealand. It is a good appointment, like all the others the honourable gentleman has made for the Board during his term of office. Miss Grellet studied at Newham College, Cambridge, and at Paris.

*Distinctions.*—At the examinations of December, 1908, three pupils of the boys' school (A. B. Jameson, R. H. Melville, C. J. Hosking) gained Junior University Scholarships; P. S. Smale and N. M. Jones qualified for Senior National Scholarships; and 4 others passed with credit. Thirty-five passed matriculation and 5 others the medical preliminary. Forty-eight passed the Civil Service Junior Examination, and 53 qualified for senior free places. Fifteen gained senior district scholarships under the Auckland Education Board.

Of former pupils of the boys' school, R. C. Maclaurin has obtained the degree of D.Sc. at Cambridge, and F. C. Tibbs that of D.D.S. of the University of Pennsylvania, and R. H. Walton has qualified as F.R.C.S., Edinburgh. A. E. Moore, P. McNab, F. H. Holmden, C. B. Tudehope, J. F. Brown won medals in the medical school of the University of Edinburgh. S. N. Ziman, Rhodes Scholar of 1908, has been awarded an honorary mathematical scholarship at Balliol College, Oxford.

The results of the examinations held in December, 1908, for the girls' school are as follows: 45 passed matriculation, 19 passed the Junior Civil Service with distinction, and 43 others gained senior free places. Three gained Senior District Scholarships under the Auckland Education Board.

Miss H. M. Northcroft, an old pupil of the school, gained her M.B., C.M., in Edinburgh, and was Clark Medallist for the year.

Several prizes were won in the girls' school at the oral examination held by the Auckland French Club.

The usual distribution of prizes took place in the Choral Hall on the 19th December, 1908: 48 prizes were given to the girls, 60 to the boys; their total cost was some £60. Two prizes were again given by Mr. J. P. Hooton for English essays and one for practical chemistry by Mr. P. M. Mackay, J.P.

G. MAURICE O'RORKE, M.A., LL.D., Chairman.

## 2. WORK OF THE HIGHEST AND LOWEST CLASSES.

*Highest—Boys' School:* English—Nesfield, English, Past and Present; Pope, Rape of the Lock; Goldsmith, Citizen of the World; Shakespeare, Hamlet; Chaucer, Prologue. Latin—Livy, IX; Virgil, VI; Cicero's Letters (Tyrell); Horace, Odes, I; Cicero, Pro Cluentio. French—Rey's French Composition and Idioms; L'Anneau d'Argent; Berthou's Selection of French Verse. Mathematics—Todhunter and Loney's Algebra; Baker and Bourne's Geometry; Hall and Knight's Trigonometry; Ward's Trigonometrical Exercises. Heat—Edser's Heat for Advanced Students. Chemistry—Tilden's Practical Chemistry. *Girls' School:* English—Literature—Macbeth, Macaulay's Essay on Warren Hastings, Samson Agonistes, Spenser's Faery Queene, Nesfield's Past and Present. Latin—Virgil's Æneid, Book VI; Horace, Odes, Book I; Cicero's Select Letters; Livy, Books XXI, XXII; Bradley's Arnold; North and Hillard; Postgate's New Latin Primer; Roman Antiquities (Wilkins); Stuckburgh's History of Rome for Beginners. French—Quatre-vingt-troize; Modern French Poetry; Wall's Concise French Grammar; Rey's Composition. Botany—Scott's Flowering and Flowerless Plants, Groom's Botany. Mathematics—Geometry, Baker and Browne; algebra, Todhunter and Loney; Jones and Cheyne; arithmetic, School (Workman's); trigonometry, Borchardt; mechanics, Jessop; heat, Glazebrook.

*Lowest.—Boys' School:* English—Nesfield's Outlines of English Grammar; Temple Reader; Scott, Lay of the Last Minstrel. Latin—Macmillan's Latin Course, Part I; Invasion of Britain. French—Macmillan's French Course, First Year; Javau's Elementary French Reading-book. Geography—Longmans' Geography, The World. Arithmetic—Loney and Granville's Arithmetic. Mathematics—Longmans' Elementary Algebra; Baker and Bourne's Geometry. *Girls' School:* English Literature—Temple Reader, Lay of Last Minstrel, The Heroes; Nesfield's Outlines of English Grammar. Latin—Macmillan's First Latin Course. French—Macmillan's First French Course; Scenes from Child-life; conversational work done by means of pictures; course of phonetics. Botany—Experimental work, general descriptions of plants, flowers, and simple physiology. Mathematics—Baker and Bourne's Geometry; algebra, Longmans'; arithmetic, Borchardt's Junior. History—Arabella Buckley's History of England. Geography—Longmans' Geography, Part II.

## 3. GENERAL STATEMENT OF ACCOUNTS for the Year ended 31st December, 1908.

Receipts.			Expenditure.		
	£	s. d.		£	s. d.
Balance at beginning of year .. ..	2,688	16 8	Secretary's expenses .. ..	164	0 0
Government grant for sites, building, furniture, &c. (general purposes), girls' school .. ..	5,000	0 0	Office expenses .. ..	67	14 10
Government capitation for free places ..	4,497	15 0	Commission, to collector .. ..	303	14 5
Mount Eden Borough for land taken ..	50	0 0	Teachers' salaries and allowances—		
Current income from reserves .. ..	5,232	16 7	Masters .. ..	4,155	8 0
Paid by School Commissioners .. ..	592	18 0	Mistresses .. ..	1,691	1 5
School fees .. ..	566	13 0	Election expenses .. ..	2	3 3
Interest .. ..	100	0 0	School requisites .. ..	102	3 6
Other receipts—			Legal expenses .. ..	2	3 0
Sale of one school list .. ..	0	0 6	Prizes .. ..	60	11 11
Transfer from Auckland Girls' School Trust Account .. ..	216	12 0	Printing and advertising .. ..	36	7 0
			Cleaning, fuel, light, &c.—		
			School .. ..	59	16 9
			Property .. ..	18	0 0
			Stationery allowance—		
			Boys .. ..	11	10 0
			Girls .. ..	5	8 0
			Insurance—		
			School .. ..	23	12 8
			Property .. ..	72	2 9
			Girls' school—		
			Requisites .. ..	35	6 5
			Rent and cleaning .. ..	70	10 0
			Maungaru expenses .. ..	399	12 5
			Building .. ..	6,173	9 11
			Fencing, repairs, &c.—		
			School .. ..	93	4 10
			Property .. ..	694	10 0
			Miscellaneous (rates, &c.)—Property .. ..	405	6 5
			Interest on current account .. ..	49	7 9
			Interest on loans .. ..	81	5 0
			Cricket coach .. ..	20	0 0
			Swimming sports—		
			Boys .. ..	3	0 0
			Girls .. ..	2	0 0
			Hockey-ground rent—Girls .. ..	2	0 0
			Athletic sports—		
			Boys .. ..	17	10 0
			Girls .. ..	3	0 0
			Cricket-wickets—Boys .. ..	3	0 0
			Appointment of French and German mistress .. ..	6	13 4
			<b>Balance at end of year—</b>		
			Cr. Girls' High School .. ..	£5,370	15 2
			Less overdraft .. ..	1,265	17 5
				<b>4,104</b>	<b>17 9</b>
				<b>£18,940</b>	<b>11 4</b>

*Girls' Grammar School Scholarship Trust Account.*

Receipts.			Expenditure.		
	£	s. d.		£	s. d.
Balance, 1st January, 1908 .. ..	5,472	10 2	Five Scholarships .. ..	50	0 0
City Council interest .. ..	100	0 0	Commission to Bank of New Zealand .. ..	0	16 3
			Commission for closing account .. ..	0	5 0
			Maungaru endowment expenses .. ..	304	16 11
			Transfer to girls' school building, Auckland Girls' School Account .. ..	216	12 0
			Balance, City Council debentures .. ..	5,000	0 0
				<b>£5,572</b>	<b>10 2</b>

*John Williamson Scholarship Trust Account.*

Capital Account.					
	£	s. d.		£	s. d.
Balance, 1st January, 1908 .. ..	1,300	0 0	Balance, 31st December, 1908—		
			Public buildings debentures .. ..	300	0 0
			Auckland Gas Company shares .. ..	210	0 0
			Property, Symonds Street .. ..	700	0 0
			Auckland Savings-bank deposit .. ..	90	0 0
				<b>£1,300</b>	<b>0 0</b>

*Income Account.*

	£	s. d.		£	s. d.
Balance, 1st January, 1908 .. ..	124	0 0	Five scholarships .. ..	50	0 0
Rent .. ..	67	10 0	City rates .. ..	8	6 3
Interest on debentures, Public Trustee .. ..	21	0 0	Insurance .. ..	1	8 0
Dividend, Auckland Gas Company .. ..	17	0 0	Balance, 31st December, 1908 .. ..	169	15 9
				<b>£229</b>	<b>10 0</b>

*Contractors' Deposit Account.*

	£	s. d.		£	s. d.
Balance, 1st January, 1908 .. ..	50	0 0	Refunded .. ..	50	0 0
Deposit received .. ..	15	0 0	Balance, 31st December, 1908 .. ..	15	0 0
				<b>£65</b>	<b>0 0</b>

## Statement of Balances, 31st December, 1908.

<i>Accounts.</i>			<i>Bank.</i>		
	£	s. d.		£	s. d.
Credit, Contractors' Deposit Account ..	15	0 0	Auckland Girls' School Trust Account de-		
.. John Williamson Income Account ..	169	15 9	bentures .. .. .	5,000	0 0
.. Auckland Girls' School Trust Account	5,000	0 0	Interest, Post-Office Savings-Bank ..	1	1 0
	5,184	15 9		£	s. d.
Debit, General Account .. .. .	1,265	17 5	Debit, Grammar School Account	1,001	17 11
			Add unrepresented cheques	80	14 9
				1,082	12 8
			Less cash in hand .. .. .	0	10 0
				1,082	2 8
	£3,918	18 4		£3,918	18 4

## Statement of Assets and Liabilities at 31st December, 1908.

<i>Assets.</i>			<i>Liabilities.</i>		
	£	s. d.		£	s. d.
Cash in hand .. .. .	0	10 0	Debit, Grammar School Account ..	1,001	17 11
Bank balances—			Unrepresented cheques .. .. .	80	14 9
Deposit in Post-Office Savings-Bank ..	12	10 8	Contractor's deposit .. .. .	15	0 0
" Auckland Savings-bank .. .. .	96	10 1	Loan from Auckland Diocesan Pension Board		
Fees outstanding .. .. .	1,545	13 10	under section 27, "Auckland Girls' School		
Rents outstanding, Ground .. .. .	464	2 9	Act, 1899," due 1906 .. .. .	1,000	0 0
" Weekly .. .. .	80	0 0	Loan from C. F. Jahn, Esq., under sec-		
John Williamson Trust .. .. .	1,200	0 0	tion 27, "Auckland Grammar School Act,		
City Council debentures .. .. .	5,000	0 0	1899," due 1919 .. .. .	500	0 0
	£8,399	7 4		£2,597	12 8

## Rent Account Balance.

	£	s. d.		£	s. d.
Arrears, 1907 .. .. .	436	5 0	Collected, 1908 .. .. .	5,232	16 7
Charges, 1908 .. .. .	5,348	5 4	Williamson, 1908 .. .. .	67	10 0
Williamson .. .. .	67	10 0	Arrears, 1908 .. .. .	544	2 9
			Written off .. .. .	7	11 0
	£5,852	0 4		£5,852	0 4

W. WALLACE KIDD, Secretary.

## THAMES HIGH SCHOOL.

## Staff.

Mr. N. A. Winter, B.A.; Mr. R. J. Thompson, B.A.; Miss M. R. Foy, A.A.

## I. WORK OF THE HIGHEST AND LOWEST CLASSES.

*Highest*—English—Manual of English Grammar and Composition (Nesfield); Shakespeare, Julius Cæsar, Richard II. Arithmetic—Lock. Geometry—Hall and Stevens, Parts I-IV. Algebra—Hall and Knight's Elementary Algebra. Latin—Via Latina (Abbott); Cæsar, II and III; Ovid's Metamorphoses (Bell); Ovid's Elegiacs (Bell); Virgil, Æneid, I. French—Columba, Le Cid; French Journal, Le Petit Français; Macmillan's French Course, II. Geography—Longmans, Book II. Book-keeping—Thornton's First Lessons.

*Lowest*.—English—Nesfield's Manual of English Grammar and Composition; Shakespeare, Merchant of Venice, As You Like It. French—Dent's First French Book. Latin—Shorter Latin Course (Macmillan), I; Scalæ Primæ. Arithmetic—Pendlebury and Robinson's First Arithmetic. Mathematics—Hall and Stevens's Geometry, I and II; Baker and Bourne's First Algebra. Geography—Longmans' Geography, Book II. Book-keeping—Thornton's First Lessons in Book-keeping.

## 2. GENERAL STATEMENT OF ACCOUNTS for the Year ended 31st December, 1908.

<i>Receipts.</i>			<i>Expenditure.</i>		
	£	s. d.		£	s. d.
Balance at beginning of year .. .. .	121	16 3	Management—		
Government grants for sites, building, fur-			Office salary .. .. .	20	0 0
niture, &c. (general purposes) .. .. .	250	0 0	Other expenses of management ..	6	0 0
Government capitation—			Teachers' salaries and allowances ..	650	0 0
For free places .. .. .	469	2 6	Examinations—Examiners' fees ..	2	2 0
Under Manual and Technical Instruction			Printing, stationery, and advertising ..	3	9 0
Regulations .. .. .	52	8 10	Cleaning, fuel, light, &c. .. .. .	29	2 0
Current income from reserves .. .. .	660	4 5	Purchases and new works .. .. .	17	15 6
Paid by School Commissioners .. .. .	30	12 0	Miscellaneous (rates, &c.) .. .. .	9	9 2
School fees .. .. .	79	18 0	Interest on current account .. .. .	0	4 0
Voluntary contributions—On account of			Interest on loan .. .. .	36	0 0
general purposes of the school .. .. .	11	13 6	Management of endowments .. .. .	100	3 11
Other receipts—Goldfields revenue ..	14	8 0	Other expenditure—		
			Cadet uniforms .. .. .	41	13 6
			School requisites .. .. .	19	14 1
			Refund capitation technical classes ..	23	3 0
			Repayment of loan .. .. .	400	0 0
			Balance at end of year .. .. .	331	7 4
	£1,690	3 6		£1,690	3 6

ARCH. BURNS, Chairman.  
JAS. KERNICK, Secretary.

Examined and found correct—J. K. WARBURTON, Controller and Auditor-General.

## NEW PLYMOUTH HIGH SCHOOL.

## Staff.

Mr. Ernest Pridham, M.A.; Miss C. D. Grant, M.A.; Miss G. A. Drew, M.A.; Mr. H. H. Ward; Mr. E. P. Fenton;  
Mr. W. Linte.

## 1. WORK OF THE HIGHEST AND LOWEST CLASSES.

*Highest.*—Latin—Abbott's Latin Prose through English Idiom, pages 109–125 (inclusive); Ramsay, Vol. i, Proses, from 154–166, pages 229–236, paragraphs 18–70; Livy, Book VI, Chapters 1–23 (Laming's edition), also exercises at end of book (1–11); Cicero, In Catilinam, Oratio I; Tutorial Latin Grammar, paragraphs 322–400; Matriculation Selections from Latin Authors—(1) Introduction; (2) Livy, pages 91–105; Cicero, pages 138–139 and 148–151; Catullus, pages 157–163; Horace, pages 163–176, and Odes, Book I, Nos. 1, 2, 3, 4, 5, 7, 9, 10, 11, 14, 26, 35, 38; Virgil's *Æneid*, 178–199; Ovid, pages 207–208; Roman History and Antiquities. French—Chardenal, Exercises for Advanced Pupils, rules 1–102, exercises 60–130; Notes from Tutorial French Grammar; phonetics; Molière, *Le Bourgeois Gentilhomme*; Victor Hugo, *Quatre-vingt-treize*; Boiëlle's edition, pages 1–145; Unseens for Middle Forms, Pellisier, Nos. 50–105; Miscellaneous work. English—Nesfield's English, Past and Present; Lamb's Essays of Elia, first part. Mathematics—Algebra, Hall and Knight, Junior University Scholarship programme; Geometry, Hall and Stevens, as for Junior Scholarship; trigonometry, Borchardt and Perrôt, as for Junior Scholarship standard. Science—Botany, as for Junior Scholarship programme. Mechanics—Tutorial statics, dynamics, hydrostatics, as for Junior Scholarship programme.

*Lowest.*—Latin—Scott and Jones, Part I, pages 1–32 and 67–74. French—Méthode Naturelle, lessons 1–29, lessons 91, 95, 106, 107, 111, 113, 114. Arithmetic—Seventh Standard work. Algebra—Hall and Knight, Exercises i–xb (inclusive). Geometry—Theorems, 1–22, omitting 9, 12, 19, 20; problems, 1–8. History—Stories from English History. Geography—Chisholm's Commercial Geography, paragraphs 72–76, 214–241. English—Mason's Outlines, to end of conjunction direct and indirect speech; correction of sentences; general analysis; essay-writing. Literature—The Treasure Island, The Ancient Mariner. Botany—Gillies, Australasian Botany. Drawing—Model and freehand.

## 2. GENERAL STATEMENT OF ACCOUNTS for the Year ended 31st December, 1908.

<i>Receipts.</i>	£ s. d.	<i>Expenditure.</i>	£ s. d.
Balance at beginning of year .. .. .	699 17 9	Management—	
Government grant for sites, building, furniture, &c. (general purposes) .. .. .	300 0 0	Office salary .. .. .	60 0 0
Government capitation—		Other office expenses .. .. .	12 10 9
For free places .. .. .	519 13 4	Other expenses of management .. .. .	2 9 8
Under Manual and Technical Instruction Regulations .. .. .	73 10 8	Teachers' salaries and allowances .. .. .	1,998 7 4
Endowments—		Prizes .. .. .	21 14 2
Current income from re-erves .. .. .	998 9 6	Printing, stationery, and advertising .. .. .	28 11 0
Interest on moneys invested and on unpaid purchase-money .. .. .	19 4 2	Cleaning, fuel, light, &c. .. .. .	104 9 0
Paid by School Commissioners .. .. .	300 0 0	Purchases and new works, drainage, and improvements .. .. .	207 18 3
School fees .. .. .	66 3 0	Fencing, repairs, &c. .. .. .	15 2 9
Other receipts—Transfer fees .. .. .	1 0 0	Miscellaneous (rates, &c.) .. .. .	22 8 0
		Insurance .. .. .	12 4 11
		Buildings, equipments, &c., for manual instruction, gymnasium .. .. .	11 1 11
		Interest on current account .. .. .	0 3 0
		Endowments—Miscellaneous (surveys, &c.) .. .. .	12 10 0
		Other expenditure—	
		Technical school—Grant towards maintenance .. .. .	30 0 0
		Taranaki Education Board—Departmental capitation (manual and technical) .. .. .	59 9 10
		Balance at end of year .. .. .	978 18 3
	<u>£2,977 18 5</u>		<u>£2,977 18 5</u>

W. FRASER, Chairman.

WALTER BEWLEY, Secretary.

Examined and found correct.—J. K. WARBURTON, Controller and Auditor-General.

## WANGANUI GIRLS' COLLEGE.

## Staff.

Miss M. I. Fraser, M.A.; Miss S. E. Gifford, M.A.; Miss J. Knapp, B.A.; Miss J. R. Currie, M.A.; Miss A. Blennerhasset, B.A.; Miss E. M. McIntosh, M.A.; Miss J. D. Abernethy, M.A.; Miss F. J. Grant, B.A.; Mrs. A. J. Blandford, L.R.A.M.; Miss J. Cherrett; Miss I. W. Gow, A.T.C.L., L.A.B.; Miss L. Reichert; Miss B. Mollison; Madame E. Briggs, Mrs. E. Clampett, Miss M. E. Browne, Mr. D. Seaward.

## 1. WORK OF THE HIGHEST AND LOWEST CLASSES.

*Highest.*—Latin, French, German, mathematics, mental science, as for B.A. degree, University of New Zealand. English—Prometheus Unbound; Lamb's Essays; Shakespeare, Henry IV (I and II), Henry V, Tempest; Tennyson's Idylls; Specimens of Early English; General History.

*Lowest.*—English, arithmetic, geography, history, sewing, drawing, in preparation for Standard V, or equivalent. French—Chardenal, I, and conversation. Swimming and physical exercises. Cookery (optional).



## PALMERSTON NORTH HIGH SCHOOL.

*Staff.*

Mr. J. E. Vernon, M.A., B.Sc.; Mr. F. Foote, B.A.; Mr. J. Murray, M.A.; Miss C. B. Mills, M.A., B.Sc.; Miss L. W. Opie, M.A.; Mr. O. Reischer; Miss Fergus; Mr. H. B. Bannister; Miss Hood-Williams; Mr. G. H. Elliott.

## 1. WORK OF THE HIGHEST AND LOWEST CLASSES.

*Highest*.—English—Literature—Henry IV, Parts 1 and 2, Henry V, Lamb's Essays of Elia; period, 1688–1744; Grammar—Nesfield's Manual, Higher Grade English; *précis*; Anglo-Saxon and Middle English; Essay. Mathematics (Junior University Scholarship standard)—Arithmetic, miscellaneous; algebra, Baker and Bourne; geometry, Baker and Bourne; trigonometry, Pendlebury's Shorter Course. Science (Junior University Scholarship standard)—Electricity and Magnetism, Poyser; mechanics, Loney. Latin—Prose, Arnold, selected continuous; translation, Tacitus' Annals, Virgil's Georgics, miscellaneous; history, Merivale and Puller; antiquities. French—Wellington College French Grammar; Spier's Rapid Exercises; Taine's Voyage aux Pyrénées; unseen translation; proses; essays.

*Lowest*.—English—Literature—Scott's Marmion, Goldsmith's Traveller, Historical Reader, Hereward the Wake; grammar, Nesfield's Manual, Parts 1 and 2; History, Ransome, 1603; geography, Europe, British possessions, trade routes, physical as in Longmans, II. Mathematics—Arithmetic, Standard VI, Zealandia; algebra, Baker and Bourne, p. 158; geometry, Baker and Bourne, Books I and II. Latin—Macmillan's Shorter Course, Part I. French—Siepmann, Part I. Chemistry, or Agriculture or Botany—Elementary. Drawing—Elementary design and colour-work. Woodwork or cooking.

## 2. GENERAL STATEMENT OF ACCOUNTS for the Year ended 31st December, 1908.

Receipts.			Expenditure.						
			£	s.	d.	£	s.	d.	
Balance at beginning of year			464	15	2				
Government grants for buildings, furniture, fittings, rent, and apparatus for recognised school classes for manual instruction			85	16	0	<b>Management—</b>			
Government capitation—						Office salary—Secretary, £90; Caretaker, £100	130	0	0
For technical instruction	..	..	186	17	7	Other office expenses	20	19	5
For free places	..	..	1,221	18	4	Director and office (technical classes)	244	0	3
For High School	..	..	56	14	7	Teachers' salaries and allowances—			
For technical classes	..	..	341	6	10	High school	1,410	17	11
Subsidy—						Technical classes	623	1	4
On voluntary contributions—secondary schools	..	..	9	1	6	Boarding-school Account	178	3	0
On voluntary contributions—technical instruction	..	..	930	12	5	Examiners' fees—			
Paid by School Commissioners	..	..	56	10	3	Technical classes	19	3	0
School fees—						Technical classes (material)	110	12	4
High school	..	..	278	12	2	Rents—Technical school	75	15	0
Technical instruction	..	..	431	1	2	Prizes	6	1	0
Boarding-school fees	..	..	178	1	0	Material for classes other than classes for manual instruction	3	1	11
Voluntary contributions—						Printing, stationery, and advertising—			
On account of general purposes of the school	..	..	3	6	0	High school	46	5	8
On account of technical instruction	..	..	884	19	11	Technical classes	73	2	9
Other receipts—						Cleaning, fuel, light, &c.—			
Sale of woodwork and cookery material	..	..	5	15	0	High school	15	3	4
Sale of lead, and sundry receipts	..	..	32	2	1	Technical classes	71	18	2
						Maintenance of classes for manual instruction			
						Government grants and voluntary contributions for site, buildings, furniture, &c.—	21	3	7
						Technical-school site	1,450	0	0
						Purchases and new works	9	18	3
						Fencing, repairs, &c.	73	16	4
						Miscellaneous (rates, &c.)	25	10	3
						Buildings, equipments, &c., for manual instruction	59	2	2
						Other expenditure—			
						School magazine, £9; petty expenses £1 4s.	10	4	0
						Refund Wanganui Education Board for manual instruction	28	0	2
						Technical school—sundry expenses	26	15	3
						Transferred to trust account Manson prize fund	150	0	0
						Balance at end of year	284	14	11
			£5,167	10	0		£5,167	10	0

\* Details of receipts and expenditure on account of *technical school* are shown in supplementary statement printed below.

## SUPPLEMENTARY STATEMENT, PALMERSTON NORTH TECHNICAL SCHOOL.

Receipts.			Expenditure.						
			£	s.	d.	£	s.	d.	
For buildings, rent, furniture, &c.	..	..	186	17	7	Director and office technical classes	244	0	3
Capitation—technical classes	..	..	341	6	10	Teachers' salaries	623	1	4
Subsidy on voluntary contributions	..	..	930	12	5	Examiners' fees	19	3	0
Technical classes—Fees	..	..	431	1	2	Material	110	12	4
Voluntary contributions—technical instruction	..	..	884	19	11	Rent	75	15	0
Sale of lead, &c.	..	..	37	17	1	Printing, cleaning, &c.	145	0	11
						Site	1,450	0	0
						Sundries	26	15	3
			£2,812	15	0		£2,694	8	1

WALTER RUTHERFURD, Chairman.  
WILLIAM HUNTER, Secretary.

Examined and found correct, except that the expenditure includes payments to members of the High School Board—namely, to W. Park, £6 5s., and to G. H. Bennett, £9 10s. 2d.—in contravention of the general rule that Trustees are precluded from buying from one of themselves.—J. K. WARBURTON, Controller and Auditor-General.

## WELLINGTON COLLEGE.

*Staff.*

*Boys' College.*—Mr. J. P. Firth, B.A. ; Mr. A. Heine, M.A. ; Mr. A. C. Gifford, M.A. ; Mr. G. G. S. Robison, M.A. ; Mr. T. Brodie, B.A. ; Mr. F. M. Renner, M.A. ; Mr. R. E. Rudman, M.A. ; Mr. D. Matheson ; Mr. J. C. Pope ; Mr. J. G. Castle ; Mr. O. Williams, M.A. ; Mr. W. J. Martyn, M.A. ; Mr. H. F. Revell, B.A. ; Mr. H. A. Smithson, M.A. ; Mr. B. Dovey ; Mr. G. R. Pitkethly ; Mr. W. S. La Trobe ; Mr. J. Ellis.

*Girls' College.*—Miss M. A. McLean, M.A. ; Miss M. C. Morrah, M.A. ; Miss M. N. Gellatly, M.A. ; Miss I. Ecclesfield, M.A. ; Miss A. M. Batham, B.A. ; Miss E. A. Newman, M.A. ; Miss V. L. Dale, B.A. ; Miss E. M. Johnston ; Miss W. Hannay ; Miss R. M. Collins, M.A. ; Miss W. S. Fraser, M.A. ; Miss Medley ; Miss K. Lawson ; Mr. J. W. M. Harrison.

## 1. REPORT OF THE BOARD OF GOVERNORS.

The Board of Governors have to report that the Wellington College and the Wellington Girls' College have done good work during the past year.

The new building adjacent to Wellington College is now in use, the number of pupils attending being 426, of whom 284 hold free places. The accommodation afforded by the two buildings is just sufficient.

The large increase in the number of pupils has necessitated a corresponding increase in the number of the staff, which now consists of the headmaster and eighteen assistant masters.

With reference to last year's work, the result of the University and Civil Service Examinations were as follows:—

Wellington College: Two pupils won Junior University Scholarship, one with the highest marks on record, the other was third on the list; 4 passed the Junior University Scholarship Examination with credit; 3 passed in the same examination; 34 passed the Medical Preliminary, Solicitor's General Knowledge and Matriculation Examinations; 6 gained Senior Education Board Scholarships; 14 passed the Junior Civil Service Examination with credit, one being second on the list in the Dominion; 15 passed the same examination; 9 qualified on the same for senior free places; 1 passed the Senior Civil Service Examination (complete) with distinction, one of two in the Dominion; 1 passed the same examination.

Girls' College: Two pupils won Senior National Scholarships; 1 passed the intermediate examination for Mus. Bac. degree; 22 passed the Matriculation Examination; 9 passed the Solicitors' General Knowledge Examination; 22 passed the Junior Civil Service Examination, 8 with credit; 1 passed the Senior Civil Service Examination; 2 won Senior Education Board Scholarships; 1 gained a senior free place.

## 2. WORK OF THE HIGHEST AND LOWEST CLASSES.

*Highest.—Boys' College:* Science—Chemistry (as for Junior Scholarship), Shenstone's Chemistry, Qualitative Analysis; electricity and magnetism, Poysner, as for Junior Scholarship. Latin—Æneid, V; Horace, Odes, II; Cicero, Pro Lege Manilia; Roman History, Horton; Composition from Bradley's Aids and Bradley's Arnold (exercises 35 to end); Antiquities, notes. French—Colomba, Méricée; Le Médecin Malgré Lui, Molière; Rey's French Composition; Eve and de Bandiss, I; Vecqueray's Papers. English—Nesfield's Historical English and Derivation; King Lear; Chaucer's Prologue; Longer English Poems, Hales. Mathematics—Arithmetic, Problem papers, as for Junior Scholarship; algebra, as for Junior Scholarship higher algebra; geometry, geometry and solid geometry as for Junior Scholarship; trigonometry, Loney, as for Junior Scholarship. German—Isolde Kurz; Die Humanistan; Goethe, Hermuum and Dorothea; Eve's Exercises; Stedman's Examination-papers. *Girls' College:* English—Nesfield's Historical Grammar; Esmond; Henry V; and part of the Faerie Queene. Latin—Æneid, Book VI; Gallic War, Book VII; In Catilinam; Odes of Horace; Agricola; Bradley's Arnold, except supplementary exercises; Primer of Roman Antiquities (Wilkins); Horton's History of the Romans; Proses and Unseens. French—Wellington College Grammar; Cyrano de Bergerac; Le Joueur; Idioms and Proverbs; proses; phonetics; paronyms. Mathematics (work as for Junior University Scholarship Examination)—Baker and Bourne's Geometry; Pendlebury's Arithmetic; Hall and Knight's Algebra; Briggs and Bryan's Algebra, Pendlebury's Trigonometry. Botany (as for Junior University Scholarship)—Dendy and Lucas's Botany and Aitken's Botany. Physics—Heat, as for Junior University Scholarship; textbook, Draper's Heat. History (as for Matriculation)—Text-book, Students', Gardiner. Geography (as for matriculation)—Text-book, Longmans', Book III. Physiology (as for matriculation)—Text-book, Foster and Shore.

*Lowest.—Boys' College:* Chemistry—Walker, pages 1–28. Electricity and magnetism—Wright's Physics. Physiology—Murché. Latin—Inglis and Prettyman, to lesson 35. French—Siepmann, I. English—Westward Ho!; Nesfield's Manual to page 83, and analysis; geography, Standard VI, Southern Cross, page 80 to end; notes on physical geography; recitation, Poems of Lord Tennyson (Blackie); history, Oman's Junior to page 101. Mathematics—Arithmetic, Southern Cross, Standard III; algebra, chapters i–x; geometry, Godfrey and Siddons, to page 34. *Girls' College:* English—Nesfield's Outlines; Lady of the Lake; Tales of King Arthur's Knights. History—Gardiner's Outlines, Henry VII to Charles II. Geography—Osborne, Geographical Reader, pages 86–167. Latin—Bell's Latin Course, Part I and Part II to end of exercise 12. French—Méthode Naturelle, to lesson 36. Arithmetic—Reduction; L.C.M.; G.C.M.; practice; vulgar fractions. Botany—Botany for Beginners (Edmunds). Physics—Elementary Physical Science (no text-book). Physiology—Hygienic Physiology (Coleman), pages 1–101.

## 3. GENERAL STATEMENT OF ACCOUNTS for the Year ended 31st December, 1908.

Receipts.	£ s. d.	Expenditure.	£ s. d.
Balance at beginning of year .. ..	1,794 8 11	Management—	
Government grants for sites, building, furniture, &c. .. ..	8,021 0 0	Office salaries .. ..	210 0 0
Government capitation for free places ..	1,245 13 4	Other office expenses .. ..	31 1 6
Subsidy on voluntary contributions .. ..	150 0 0	Teachers' salaries and allowances ..	5,314 4 4
Current income from reserves .. ..	3,469 18 2	Examiners' fees .. ..	103 4 0
Paid by School Commissioners .. ..	184 14 9	Other expenses of examination .. ..	61 4 1
School fees .. ..	3,109 0 3	Prizes .. ..	73 0 6
Voluntary contributions .. ..	150 0 0	Printing, stationery, and advertising ..	295 2 5
Other receipts—		Cleaning, fuel, light, &c. .. ..	214 8 10
Interest on deposit .. ..	31 19 7	Maintenance of classes for manual instruction .. ..	68 3 0
Donations for prizes .. ..	5 5 0	Government grants for site, buildings, furniture, &c. (ordinary) .. ..	8,021 0 0
Discount .. ..	0 6 3	Purchases and new works .. ..	959 0 2
Refund .. ..	7 0 0	Repayment of loan on building .. ..	257 18 4
		Fencing, repairs, insurance, &c. .. ..	782 18 4
		Interest .. ..	682 2 0
		Bank charge .. ..	0 10 0
		Interest on cost of reclaimed land .. ..	104 14 6
		Miscellaneous (surveys, &c.) .. ..	38 17 0
		Other expenditure—	
		Fees refunded .. ..	1 19 8
		Contract deposit refunded .. ..	10 0 0
		Grant to Games Fund .. ..	25 0 0
		Legal expenses .. ..	0 7 6
		Balance at end of year .. ..	914 10 1
	£18,169 6 3		£18,169 6 3

A. DE B. BRANDON, Chairman.  
CHAS. P. POWLES, Secretary.

Examined and found correct, except that moneys amounting to £17 19s. 3d. of Turnbull, Liverton, Cocks, and Mary Izard Trusts have been used for the purposes of the Moore, Rhodes, Barnicoat, and Levin Trusts, and that such moneys should not be shown as assets of the four last-named Trusts.—J. K. WARBURTON, Controller and Auditor-General.

## GISBORNE HIGH SCHOOL.

## 1. REPORT OF THE BOARD OF GOVERNORS.

The year now closed is the last of a long series of years during which the Governors have aided secondary education in the District High School at Gisborne.

The work of the year, within the necessarily limited lines upon which it has been based, has been fair.

Having regard to the rapid development of the east coast, and the increase of population at and near Gisborne, the Governors concluded, after very careful consideration, that the time had come when a high school should be established. Arrangements have been made to open such a school at the opening of the ensuing school year.

The Governors will be able temporarily to utilise the high-school room and the Gisborne Technical School not at present fully utilised for technical instruction. At the earliest moment a high-school building standing in its own grounds should be provided. Negotiations have been proceeding with the Minister for the acquirement of a suitable education reserve in the Borough of Gisborne as a site for the permanent school.

The work of the Technical School in all its branches has been excellent, and a good interest has been maintained.

## 2. GENERAL STATEMENT OF ACCOUNTS for the Year ended 31st December, 1908.

Receipts.	£ s. d.	Expenditure.	£ s. d.
Balance at beginning of year .. ..	3,704 17 3	Management—	
Government capitation for technical classes	*25 8 6	Office salary .. ..	50 0 0
Subsidy on voluntary contributions, technical instruction .. ..	*20 0 0	Other office expenses .. ..	4 5 10
Current income from reserves .. ..	150 0 0	Other expenses of management .. ..	5 8 3
Interest on moneys invested and on unpaid purchase-money .. ..	180 17 7	Boarding allowances .. ..	50 0 0
Paid by School Commissioners .. ..	337 9 0	Prizes .. ..	2 16 6
Interest accrued on current account, Post-Office Savings-Bank .. ..	8 16 5	Printing, stationery, and advertising ..	22 18 3
Voluntary contributions, technical instruction .. ..	*20 0 0	Maintenance of classes for technical instruction .. ..	*365 15 5
Other receipts—		Government grants for site, buildings, furniture, &c. (technical instruction) .. ..	*103 18 4
From Hawke's Bay Education Board, capitation, school and teachers' classes	275 16 2	Interest on current account .. ..	0 2 0
Grant from Education Board for teachers' classes .. ..	25 0 0	Other expenditure—	
Grant from Cook County Council on account of Education Board, towards cost of winter school for teachers .. ..	15 0 0	Hawke's Bay Education Board .. ..	145 13 3
		Insurance .. ..	9 6 4
		Balance at end of year .. ..	4,003 0 9
	*£4,763 4 11		*£4,763 4 11

\* Details of receipts and expenditure of technical school are shown in supplementary statement printed on next page.



## SUPPLEMENTARY STATEMENT, GISBORNE TECHNICAL SCHOOL.

<i>Receipts.</i>	£ s. d.	<i>Expenditure.</i>	£ s. d.
Government capitation for technical classes	25 8 6	Maintenance of classes for technical instruction .. .. .	365 15 5
Subsidy on voluntary contributions .. .. .	20 0 0	Buildings equipment, &c., for technical instruction .. .. .	103 18 4
Voluntary contributions .. .. .	20 0 0		
	£65 8 6		£469 13 9

*Statement of Assets and Liabilities.*

<i>Assets.</i>	£ s. d.	<i>Liabilities.</i>
Freehold, Te Marunga (Government valuation) .. .. .	18,033 0 0	
Mortgages .. .. .	3,650 0 0	
Balances—		
Post-Office Savings-Bank	220 14 5	
Union Bank of Australia	139 16 4	
Advance to technical classes	138 16 0	
	499 6 9	
Loss unrepresented cheque	7 10 0	
	491 16 9	Nil.
	£22,174 16 9	

C. DE LAUTOUR, Chairman.  
W. MORGAN, Secretary.

## NAPIER HIGH SCHOOL.

*Staff.*

*Boys' School.*—Mr. A. S. M. Polson, B.A.; Mr. E. W. Andrews, B.A.; Mr. W. Kerr, M.A.; Mr. A. W. Short; Mr. F. L. Henley, B.A.; Mr. J. H. McW. Finlayson; Mr. W. H. Davy.  
*Girls' School.*—Miss A. E. J. Spencer, B.A.; Miss C. R. Kirk, B.A.; Miss F. J. W. Hodges, M.A.; Miss J. O. Gillies; Miss D. A. Gillam, M.A.; Miss I. C. Greig; Miss G. Anderson.

## 1. REPORT OF THE BOARD OF GOVERNORS.

The Governors of Napier High School have the honour to report that the schools under their charge have had another very successful year.

The last public examinations produced the following results:—

*Boys' School:* University Junior Scholarship Examination—1 Senior National Scholarship, 1 credit pass, 3 matriculation passes, 1 completed medical preliminary; Matriculation and Solicitors' General Knowledge—1 passed; Senior Civil Service—1 passed in four subjects and 3 in three subjects; Junior Civil Service—21 passed, 6 with credit; Senior Free Place (in addition to foregoing), 12; Junior Free Place, 8; Education Board Senior Scholarships—1 scholarship (first place on list) and 12 others qualified; Education Board Junior Scholarships—4 scholarships (one first place on list) and 2 others qualified. In addition to these successes one pupil kept first year's terms at Victoria College, passing in three subjects, and another pupil secured a Marsh Theological Scholarship at St. John's College, Auckland.

*Girls' School (Junior University Scholarship)*—1 gained Junior Scholarship (ninth on list), 1 passed for matriculation; Matriculation—5 passed, 2 also qualifying for medical preliminary, and 3 for Solicitors' General Knowledge; Junior Civil Service—10 passed, 2 gaining "credit"; Senior Free Place—14 passed; Junior Free Place—2 passed; Hawke's Bay Education Board Senior Scholarship—2 gained scholarships and 6 more qualified; Hawke's Bay Education Board Junior Scholarships—1 gained scholarship.

In consequence of the continued growth and success maintained, it was found necessary to take steps to increase the accommodation at the boys' school by the addition of two class-rooms and a new thoroughly equipped laboratory. This work will be completed by the end of the first term of 1909.

## 2. WORK OF THE HIGHEST AND LOWEST CLASSES.

*Highest.—Boys' School:* Geometry (Godfrey and Siddons); algebra (Hall and Knight); trigonometry (Pendlebury); arithmetic (Pendlebury); heat (Stewart's Advanced); mechanics and hydrostatics (University Tutorial Press), all to Junior Scholarship standard. English, Low's English Language; Chaucer's Prologue; Shakespeare's Macbeth; Henry IV, Parts I and II; Matthew Arnold's Poems, selected; general literature, with period 1688–1744 in detail; composition, all to Junior Scholarship standard. Latin Cicero, selections (Bell); Livy; Hannibal's First Campaign (Bell); Virgil, Georgics III and IV; Horace, Odes III and IV; miscellaneous unprepared passages and continuous prose; Bradley's Arnold; Horton's History of the Romans; Creighton's Rome; Wilkins's Antiquities, all to Junior Scholarship standard. French Voltaire; Charles XII; Molière; L'Avare; Berthou's Modern French Prose and Modern French Verse; miscellaneous unprepared passages and continuous prose; Blouet's Prose Composition; Bué's Idioms; Thirion's Irregular Verbs; Tutorial Grammar and Syntax; Stedman's Grammar Questions; essay-writing, phonetics, and oral work, all to Junior Scholarship standard. Chemistry (Jago); physiology (Furieux, with practical works in anatomy and microscopy); geography (Longmans', Parts II and V); history (Tout and York-Powell), all to matriculation standard. *Girls' School:* English literature—Lamb's Essays of Elia; Shakespeare's Henry V; selections from Chaucer; Shelley's Adonais; Carlyle's Sartor Resartus, Part II; History of English Literature from Milton to Swift. English grammar and composition (Junior Scholarship syllabus)—Nesfield's English Grammar, Past and Present. French (Junior Scholarship syllabus)—



The grounds have been put in order, and thus facilities are provided for physical exercise in the way of sports, which are taken advantage of by boys and girls.

The school in an increasing manner is commanding the confidence of the public, as is shown by the rapid growth in attendance. This has led the Governors to advertise for a third assistant.

## 2. WORK OF THE HIGHEST AND LOWEST CLASSES.

*Highest.*—English—Nesfield's Grammar; Anglo-Saxon and early English; Shakespeare's Henry IV (Parts I and II), Henry V; Lamb's Essays of Elia; The Age of Pope; Indexing and *précis* writing. Latin—Livy, I; Virgil's Georgics, IV; Tacitus Annals, I; Grammar and composition as for Junior University Scholarship; Tutorial History of Rome; Ramsay's Roman Antiquities. French—Wellington College Grammar; Macmillan's Course, II; *Le Roi des Montagnes*; and miscellaneous translation. Mathematics—As for Junior University Scholarship. Mechanics—Loney's Mechanics and Hydrostatics. Heat—Glazebrook's Heat. Physiology—Furneaux, Hill.

*Lowest.*—English—Ivanhoe; Merchant of Venice, Acts I and II; Great Authors, First Period; Nesfield's Grammar, pages 1–115. Latin—Via Latina, to conjugation of verbs. French—Chardenal's First Course and Méthode Naturelle. Arithmetic—General, Pendlebury, pages 1–280. Geography—General, as for Junior Civil Service. History—General as for Junior Civil Service. Algebra—Hall and Knight, to addition and subtraction of fractions. Geometry—Hall and Stevens, Parts I and II. Book-keeping—Thornton's First Lessons, i to xi. Drawing—Freehand and geometrical.

## 3. GENERAL STATEMENT OF ACCOUNTS for the Year ended 31st December, 1908.

<i>Receipts.</i>	£ s. d.	<i>Expenditure.</i>	£ s. d.
Balance at beginning of year .. ..	163 2 0	Management—Office expenses .. ..	3 13 6
Government grants—		Teachers' salaries and allowances .. ..	617 18 4
For sites, building, furniture, &c. (general purposes) .. ..	600 0 0	Prizes .. ..	11 11 8
Rent Technical School .. ..	8 7 6	Material for classes other than classes for manual instruction .. ..	11 9 8
For buildings, furniture, fittings, and apparatus for recognised school classes for manual instruction .. ..	146 8 9	Printing, stationery, and advertising .. ..	28 4 8
Technical instruction .. ..	*626 6 6	Cleaning, fuel, light, &c. .. ..	47 1 11
Material, technical instruction .. ..	*12 14 0	Maintenance of classes for manual instruction .. ..	58 5 1
Government capitation—		Government grant for site, buildings, furniture, &c. .. ..	600 0 0
For free places .. ..	607 13 4	Manual instruction .. ..	146 8 9
Manual classes .. ..	23 9 6	Technical instruction .. ..	*626 6 6
Technical classes .. ..	*24 4 6	Purchases and new works .. ..	226 17 7
Subsidy on voluntary contributions, technical instruction* .. ..	*40 0 0	Fencing, repairs, &c. .. ..	121 9 0
Paid by School Commissioners .. ..	271 0 0	Insurance, bank charges, and exchange .. ..	5 18 10
School fees .. ..	78 19 6	Buildings, equipments, &c., for technical instruction .. ..	*69 10 10
Technical class fees .. ..	*120 10 0	Interest on current account .. ..	0 3 0
Interest on current account .. ..	3 10 7	Other expenditure: Technical classes—	
Voluntary contributions—		Salaries .. ..	*156 19 6
On account of general purposes of the school .. ..	19 12 0	Material .. ..	*22 9 3
Technical instruction .. ..	*40 0 0	Lighting .. ..	*3 10 0
Other receipts—		Insurance, technical building .. ..	*0 17 4
Sale of hyloplate .. ..	5 9 9	Balance at end of year .. ..	34 18 2
Part half-cost fencing .. ..	1 19 8		
	*£2,793 7 7		*£2,793 7 7

\* Details of receipts and expenditure of technical school are shown in supplementary statement printed below.

### SUPPLEMENTARY STATEMENT, DANNEVIRKE TECHNICAL SCHOOL.

<i>Receipts.</i>	£ s. d.	<i>Expenditure.</i>	£ s. d.
For buildings technical instruction .. ..	626 6 6	Buildings, &c., from Government grants .. ..	626 6 6
Material, technical classes .. ..	12 14 0	"  "  "  "  "  "  "  "  "  "  "  "  "  "  "  " from current revenue .. ..	69 10 10
Capitation, technical classes .. ..	24 4 6	Salaries .. ..	156 19 6
Subsidy on voluntary contributions .. ..	40 0 0	Material .. ..	22 9 3
Technical class fees .. ..	120 10 0	Lighting .. ..	3 10 0
Voluntary contributions .. ..	40 0 0	Insurance .. ..	0 17 4
	£863 15 0		£879 13 5

A. GRANT, Chairman.

T. MACALLAN, Secretary.

Examined and found correct, except that Thomas Bain, as a member of the Board virtually invested with a fiduciary character, the payment to him of sums amounting to £22 5s. for books, stationery, and stamps, contravenes the established rule that Trustees shall not buy from one of themselves.—J. K. WARBURTON, Controller and Auditor-General.

## MARLBOROUGH HIGH SCHOOL.

*Staff.*

Mr. John Innes, M.A.; Mr. J. H. Goulding, M.A.; Miss M. C. Ross, M.A.; Miss E. M. Allen, M.A.

## I. WORK OF THE HIGHEST AND LOWEST CLASSES.

*Highest*.—English—Nesfield, English Grammar Past and Present; senior composition; exercises in composition and essay writing; Wilson's Literature; Chaucer's Prologue; De Quincey's Opium-eater; and Gray's Poems. French—Eve and Baudiss's Grammar; Berthou and Onions's Composition; Cid; L'Arare; Taine's Voyage aux Pyrénées; sight. Latin—Bradley's Arnold's Latin Prose Composition; Ramsay's Latin Prose, Vol. II; Wilkins's Roman Antiquities; Schuckburgh's Roman History for Beginners; Virgil, Georgic, Book II; Livy, Book XXI; sight. Mathematics—Pure mathematics as for University Junior Scholarship. Science—Botany and heat as for University Junior Scholarship.

*Lowest*.—English—Nesfield's Outlines, and Junior Composition; Meiklejohn's Spelling List; Lamb's Adventures of Ulysses; Goldsmith's Traveller and Deserted Village. History—Tout's History of England, Book 3, to end of reign of Richard II. Geography—Europe; The British Isles (Arnold's Geographical Handbooks). Arithmetic—Pendlebury's New Arithmetic, Part I, and some of the examination-papers. Algebra—Hall and Knight, to end of simultaneous equations. Geometry—Hall and Stevens, Par. I. Latin—Scott and Jones's First Latin Course; Scalæ Primæ. French—Dent's New First French Book. Book-keeping—Elementary exercises, based on Thornton's Primer. Physics—Gregory's Exercise-book. Botany—Elementary work; examination and description of leaves, flowers, and seeds. Cookery, needlework, woodwork, drill.

## 2. GENERAL STATEMENT OF ACCOUNTS for the Year ended 31st December, 1908.

<i>Receipts.</i>	£	s.	d.	<i>Expenditure.</i>	£	s.	d.
Balance at beginning of year .. .. .	244	11	11	Management—			
Government grants—				Office salary .. .. .	40	0	0
For sites, building, furniture, &c.				Other office expenses .. .. .	2	5	11
(general purposes) .. .. .	100	0	0	Other expenses of management .. .. .	2	11	7
Government capitation—				Teachers' salaries and allowances .. .. .	900	0	0
For free places .. .. .	861	1	8	Scholarships .. .. .	50	0	0
Under Manual and Technical Instruction				Prizes .. .. .	21	6	6
Regulations .. .. .	44	5	0	Printing, stationery, and advertising .. .. .	21	11	0
Subsidy on voluntary contributions,				Cleaning, fuel, light, &c. .. .. .	49	4	9
secondary schools .. .. .	40	0	0	Maintenance of classes for manual instruc-			
Statutory grant .. .. .	400	0	0	tion .. .. .	42	13	10
Endowments—Paid by School Commis-				Government grants for site, buildings,			
sioners .. .. .	35	0	0	furniture, &c. .. .. .	100	0	0
School fees .. .. .	107	5	0	Purchases and new works .. .. .	25	13	6
Interest on current account .. .. .	11	2	2	Fencing, repairs, &c. .. .. .	27	13	5
Voluntary contributions on account of				Miscellaneous (rates, &c.) .. .. .	7	16	0
general purposes of the school .. .. .	45	0	0	Other expenditure—			
				Interest on Nosworthy Bequest .. .. .	11	5	0
				Rent of cricket and hockey ground .. .. .	5	5	0
				Balance at end of year .. .. .	580	19	3
	£1,888	5	9		£1,888	5	9

R. McCALLUM, Chairman.

E. HYLTON, Secretary.

## NELSON COLLEGE.

*Staff.*

*Boys' College.*—Mr. H. L. Fowler, M.A.; Mr. G. J. Lancaster, M.A.; Mr. C. H. Broad, B.A.; Mr. W. H. Moyes, M.A.; Mr. J. G. McKay, B.A.; Mr. P. C. Edmondson, B.A.; Mr. A. Sandel; Mr. M. N. Skelton; Mr. W. S. Hampson; Mr. F. F. C. Huddleston.

*Girls' College.*—Miss M. Lorimer, M.A.; Miss F. M. Kirton, M.A.; Miss M. McEachen, M.A.; Miss I. Robertson, M.A.; Miss M. M. Strang, M.A.; Miss N. I. Maclean, M.A.; Miss A. Eastwood, M.A.; Miss E. F. Chisholm; Miss W. Greenwood; Mr. F. F. C. Huddleston.

## I. REPORT OF THE GOVERNORS.

The attendance at both Colleges for the past year has been very satisfactory, and the many applications for admission in the ensuing year warrant the Governors in anticipating that it will show even more favourable results.

The Boys' College playground, which the Governors were enabled to level and grass by the aid of the generous contributions of the College old boys, has been of the utmost value for sports and drill during the year.

The large swimming-bath in the Boys' College grounds has provided a valuable and healthful recreation, which the boys have greatly appreciated, and have taken full advantage of.

A clock is being supplied to the tower of the Boys' College by the family of the late Rev. J. C. Andrew, a former Principal, in memory of their father. This will be a benefit both to the College and to the residents in the vicinity, and the Governors take this opportunity of publicly expressing their grateful thanks to the donors.

They also desire to express their appreciation of the good work done during the year by the Principals and staffs of both Colleges, as shown by results.

*The Staff.*

*Boys' College.*—Mr. G. H. Wills left during the year, having received an appointment on the staff of the New Plymouth High School. Mr. A. Sandel, a former pupil of the College, with a brilliant record, was appointed to fill the vacancy.

*Girls' College.*—Miss I. Robertson, M.A., and Miss N. I. Maclean, M.A., left at the end of the year, the former to engage in mission-work in New Guinea, and the latter to join the staff of the Napier Girls' High School. The vacancies were filled by the appointments of Miss Ada O'Callaghan, M.A., and Miss Beatrix Nicholson, B.A.

*Boys' College.*

F. Brock and P. Jory gained scholarships in the University Junior Scholarship Examination, and 2 other boys gained credit. R. Worley was awarded a scholarship at St. John's College, Auckland, on his work for the same examination. A. J. Papps, who passed the first section of the B.A. Examination, and H. O. Jordan, have been granted scholarships at the Wellington Training College. Thirteen boys passed the matriculation and allied examinations, viz.: The Medical Preliminary, the Engineering Preliminary, and the Solicitors' General Knowledge Examination. Thirty-eight boys passed the Junior Civil Service Examination.

*Girls' College.*

Myrtle Garland, Eileen Adams, Connie Bartlett, Gladys Jordan, and Kathleen Haldane passed first year's terms at Victoria College. M. Cooke passed Senior Civil Service in four subjects. Ten girls passed matriculation, and 20 girls passed the Junior Civil Service Examination. Twelve girls obtained senior free places under clause 7 (c) of the regulations, and 5 others by examination. The Preparatory Department, examined by one of the Education Board Inspectors, obtained a good report, 8 pupils receiving certificates of proficiency.

*Average Attendance.*

Boys' College, 184; Girls' College, 147.

## 2. WORK OF THE HIGHEST AND LOWEST CLASSES.

*Highest.—Boys' College:* As for Junior University Scholarships and First Section, B.A. degree examination: English—Selections from Wordsworth, Tennyson, Gray, Chaucer, Lamb's Essays and Letters; Shakespeare's Henry V; Brooks' Primer of English Literature; Skeat's Primer of Etymology; Nesfield's English Past and Present: for terms only—Henry IV, Morris and Skeat's specimens. Latin—Virgil, Georgics, III and IV; Ovid, Tristia I; prose selections; Bradley's Arnold, and Aids to Latin Prose; Bryan's Latin Prose (Cæsar); Res Romanæ; Horton's History of Rome: for terms only—Tacitus, Annals I. French—Tartarin de Tarascon; Half-hours (Hachette); Eve and De Baudiss's Grammar; Primer of Philology (Bell); Blouet's Composition. German—Whitney's Reader; Authors of the Day, Part I (Hachette); Macmillan's Composition; Eve's Grammar and Exercises, Part II. Mathematics—Text-books: C. Smith's Treatise on Algebra; Baker and Bourne's Algebra, Part II; Lachlan and Fletcher's Trigonometry; Barnard and Child's Geometry (Senior). Science—Shenstone's Chemistry; Loney's Statics and Dynamics; Loney's Hydrostatics; Draper's Heat. *Girls' College:* Second year's terms at Victoria College, First Year Junior University Scholarship work. English—Nesfield's Historical English and Derivation; Shakespeare's Henry IV, and Henry V; Lamb's Essays of Elia; Hales's Longer English Poems; Sweet's Anglo-Saxon Primer; Morris's Specimens of Early English. French—Le Cid; L'Avare; Voyage aux Pyrenées; Wellington College French Grammar; Rapid French Exercises (Spiers); Siepmann's First Term; Bué's French Idioms. Latin—Bradley's Arnold's Latin Prose Composition; Allen's Latin Grammar; Ramsay's Latin Prose, Part II; Georgics, Book IV; Annals of Tacitus, Book III.

*Lowest.—Boys' College:* Class II does the work of the Sixth Standard, as defined in the regulations. *Girls' College:* Nesfield's Manual; The Lady of the Lake; The Talisman; Siepmann's Primary French Course, Part I; Furneaux's Physiology. Longmans' Geography, Book III; Pendlebury's Arithmetic; Ransome's Elementary History. First year of Civil Service programme.

## 3. STATEMENT of RECEIPTS and EXPENDITURE for the Year ending 31st December, 1908.

		<i>Endowment Account.</i>			
		<i>Receipts.</i>		<i>Expenditure.</i>	
		£	s.	£	s.
Rents .. .. .	..	949	6 0	Rates and taxes .. .. .	14 7 2
Interest .. .. .	..	180	15 2	Insurances .. .. .	6 16 2
School Commissioners .. .. .	..	290	0 0	Printing and advertising .. .. .	9 14 8
Materials sold .. .. .	..	3	0 0	Stationery .. .. .	3 16 0
Refunds .. .. .	..	0	15 2	Repairs .. .. .	1 9 4
				Governors' and auditors' fees .. .. .	35 16 8
				Office-rent .. .. .	25 0 0
				Office-cleaning and gas .. .. .	11 14 11
				Interest on bank overdraft .. .. .	227 11 3
				Telephone and letter-box .. .. .	6 0 0
				Inspection of properties .. .. .	8 1 6
				Clearing properties .. .. .	4 12 0
				Secretary .. .. .	83 6 0
				Petty cash, postages, and sundries .. .. .	22 16 0
Carried forward .. .. .	..	£1,423	16 4	Carried forward .. .. .	£461 1 8

*Boys' College.*

<i>Receipts.</i>		£	s.	d.	<i>Expenditure.</i>		£	s.	d.
Brought forward	..	1,423	16	4	Brought forward	..	461	1	8
Boarding fees	..	3,602	19	5	House expenses	..	2,699	18	4
Tuition fees	..	1,050	10	0	Tuition expenses	..	2,155	15	0
Government capitation, free places	..	1,144	17	6	Scholarships—				
Hawkes Bay Old Boys' Association for prize	..		12	0	Endowed	..	98	0	0
Refund	..		0	10	Foundation	..	27	0	0
					District High School	..	80	0	0
					Auditors' and Governors' fees	..	37	6	8
					Stationery	..	47	7	8
					Prizes	..	17	16	1
					Printing and advertising	..	27	1	11
					Gas	..	155	7	6
					Rates and taxes	..	59	15	8
					Repairs	..	111	2	8
					Insurance	..	40	3	3
					Interest on mortgage	..	500	0	0
					Chemicals	..	17	7	7
					Grounds	..	80	6	10
					Sinking shaft for water	..	71	17	3
					Sports and magazine	..	35	0	0
					Hawkes Bay Old Boys' prize	..	12	0	0
					Prefects' badges	..	4	19	0
					Telephone	..	6	0	0
					Legal expenses	..	1	1	11
					Secretary	..	88	7	0
					Sundries	..	3	2	0

*Girls' College.*

		£	s.	d.			£	s.	d.
Boarding fees	..	1,435	2	5	House expenses	..	1,305	18	10
Tuition fees	..	802	7	6	Tuition expenses	..	1,470	11	8
Government capitation—					Scholarships—				
Free places	..	1,051	14	2	Endowed	..	50	0	0
Cookery classes	..	55	10	0	Foundation	..	59	5	4
Physiology classes	..	20	5	0	District High School	..	80	0	0
Botany classes	..	5	12	6	Governors' and auditors' fees	..	37	6	8
Refund	..	1	7	0	Stationery	..	41	16	0
					Prizes	..	29	0	4
					Printing and advertising	..	29	4	5
					Gas	..	74	12	11
					Rates and taxes	..	14	17	6
					Repairs	..	39	9	1
					Insurance	..	23	10	4
					Telephone and letter-box	..	6	0	0
					Subscription to magazine	..	8	3	0
					Secretary	..	88	7	0
					Sundries	..	0	17	7

*Capital Account.*

		£	s.	d.			£	s.	d.
Land sold	..	55	0	0	Furniture, Boys' College	..	166	2	8
Mortgages repaid	..	1,650	0	0	Furniture, Girls' College	..	86	8	11
Repayment on account of mortgage	..	19	2	3	Bank overdraft, 31st December, 1907	..	4,762	19	10
Eastern Extension Telegraph Co. Old Boys	..	58	0	0					
Bank overdraft, 31st December, 1908	..	£2,804	6	0					
Add unpaid cheques	..	9	10	0					
		2,813	16	0					
		<u>£15,197</u>	<u>10</u>	<u>1</u>			<u>£15,197</u>	<u>10</u>	<u>1</u>

*Statement of Loans on Mortgage Account at 31st December, 1908.**A. Mortgages owing to Nelson College.*

		£	s.	d.			£	s.	d.
Amount outstanding on loan at 31st December, 1907	..	3,357	14	8	Mortgages repaid	..	1,650	0	0
					Repayment on account of mortgage	..	19	2	3
					Balance outstanding on loan at 31st December, 1908	..	1,688	12	5
		<u>£3,357</u>	<u>14</u>	<u>8</u>			<u>£3,357</u>	<u>14</u>	<u>8</u>

*B. Mortgage owing by Nelson College.*

		£	s.	d.			£	s.	d.
Amount borrowed on mortgage at 31st December, 1907	..	10,000	0	0	Amount outstanding on mortgage at 31st December, 1908	..	10,000	0	0
		<u>10,000</u>	<u>0</u>	<u>0</u>			<u>10,000</u>	<u>0</u>	<u>0</u>

We hereby certify that we have examined the above accounts, and have found the same correct, and have duly examined all deeds of mortgage and other securities, and have found the same in full force and virtue.—JOHN KING, R. CATLEY, Auditors.

*Statement of Assets and Liabilities of Nelson College on 31st December, 1908.*

<i>Assets.</i>			<i>Liabilities.</i>		
	£	s. d.		£	s. d.
Mortgage securities .. .. .	1,688	12 5	Mortgage on Colleges .. .. .	10,000	0 0
Freehold property, exclusive of College buildings .. .. .	21,179	18 6	Governors' fees .. .. .	100	0 0
College buildings—			Bank overdraft .. .. .	2,804	6 0
Boys' College and outbuildings .. .. .	26,380	15 5	Add unpaid cheque .. .. .	9	10 0
Girls' College and outbuildings .. .. .	6,500	0 0	<b>Balance current</b> .. .. .	49,176	1 10
College house .. .. .	2,044	15 1			
College furniture—					
Boys' College .. .. .	1,664	0 0			
Girls' College .. .. .	1,500	8 11			
Office .. .. .	32	12 0			
Interest due .. .. .	13	15 0			
Rents due .. .. .	95	7 8			
Fees due .. .. .	91	17 4			
Capitation for free pupils .. .. .	698	15 0			
Advances to boarders .. .. .	199	0 6			
	<b>£62,089</b>	<b>17 10</b>		<b>£62,089</b>	<b>17 10</b>

JAMES BLAIR, Secretary.

**GREYMOUTH HIGH SCHOOL.**

*GENERAL STATEMENT OF ACCOUNTS for the Year ended 31st December, 1908.*

<i>Receipts.</i>			<i>Expenditure.</i>		
	£	s. d.		£	s. d.
Balance, 31st December, 1907 .. .. .	1,424	4 0	<b>Management—</b>		
Westland School Commissioners .. .. .	300	5 0	Secretary's salary (nine months) .. .. .	7	10 0
Interest .. .. .	68	12 2	Bank charges and exchange .. .. .	0	15 0
Overpayment refund by late Secretary .. .. .	10	0 0	Late Secretary for extra services .. .. .	10	0 0
			Grants to Grey Education Board .. .. .	250	0 0
			<b>Balance, 31st December, 1908</b> .. .. .	<b>1,534</b>	<b>16 2</b>
	<b>£1,803</b>	<b>1 2</b>		<b>£1,803</b>	<b>1 2</b>

**PARTICULARS OF BALANCE.**

<i>Assets.</i>			<i>Liabilities.</i>		
	£	s. d.		£	s. d.
National Bank .. .. .	7	17 8			
Post-office Savings bank .. .. .	276	18 6			
Grey Borough debentures .. .. .	1,190	0 0			
Mortgage loan .. .. .	60	0 0			
	<b>£1,534</b>	<b>16 2</b>			

W. R. KETTLE, Chairman.  
P. F. DANIEL, Secretary.

Examined and found correct.—J. K. WARBURTON, Controller and Auditor-General.

**HOKITIKA HIGH SCHOOL.**

*GENERAL STATEMENT OF ACCOUNTS for the Year ended 31st December, 1908.*

<i>Receipts.</i>			<i>Expenditure.</i>		
	£	s. d.		£	s. d.
Balance at beginning of year .. .. .	1,545	8 0	<b>Management—</b>		
Current income from reserves .. .. .	99	0 0	Office salary .. .. .	15	15 0
Interest on moneys invested and on unpaid purchase-money .. .. .	55	5 0	Other office expenses .. .. .	0	11 6
Paid by School Commissioners .. .. .	250	0 0	Grant to Westland Education Board .. .. .	125	0 0
			Fencing, repairs, &c. .. .. .	0	16 6
			Miscellaneous (rates, &c.) .. .. .	23	6 5
			<b>Balance at end of year</b> .. .. .	<b>1,724</b>	<b>3 7</b>
	<b>£1,889</b>	<b>13 0</b>		<b>£1,889</b>	<b>13 0</b>

**Assets and Liabilities.**

<i>Assets.</i>			<i>Liabilities.</i>		
	£	s. d.		£	s. d.
Credit balance Bank of New Zealand, current account .. .. .	108	3 7	Office salary due (three months) .. .. .	3	18 9
Fixed deposits, Bank of New Zealand .. .. .	1,200	0 0	Due for repairs, furniture, &c. .. .. .	8	15 0
Deposit, Hokitika Savings-bank .. .. .	200	0 0			
Balance Hokitika Savings-bank, current account .. .. .	16	0 0			
Hokitika Borough debentures .. .. .	200	0 0			
Interest due on debentures .. .. .	5	0 0			
Rent due, Government House .. .. .	8	5 0			
Government House and grounds (estimated value) .. .. .	920	0 0			
	<b>£2,657</b>	<b>8 7</b>		<b>£12</b>	<b>13 9</b>

H. L. MICHEL, Chairman.  
CHAS. KIRK, Secretary.

Examined and found correct, subject to the remark that the Hokitika Borough debentures, in which school funds are invested, are not securities in which the Governors are authorised by law to invest such school funds.—J. K. WARBURTON, Controller and Auditor-General.





## CHRISTCHURCH BOYS' HIGH SCHOOL.

*Staff.*

Mr. C. E. Bevan-Brown, M.A.; Mr. B. K. S. Lawrence, B.A.; Mr. W. Walton, B.A.; Mr. R. M. Laing, M.A., B.Sc.; Mr. A. Merton; Mr. R. Speight, M.A., B.Sc.; Mr. T. H. Jackson, B.A.; Mr. J. H. Smith, M.A.; Mr. T. W. Cane, M.A.; Mr. J. Cook; Mr. S. A. Clark, B.A.; Mr. J. D. Davey; Mr. C. M. Bevan-Brown; Mr. W. S. Malaquin; Captain F. Farthing; Mr. T. S. Tankard.

## 1. REPORT OF THE HEADMASTER.

The school-roll for 1908 was as follows: For the first term, 220; for the second term, 218; for the third term, 201. These numbers include the Preparatory Form, which had on its roll 20, 23, 22 for the three terms respectively. There were 94 holders of free places—51 junior and 43 senior.

The expansion of the upper school continues—there were 98 as against 74 in 1906; but the total school-roll shows a shrinkage, owing to the numerous district high schools and the Technical Day-school.

The gymnasium was opened on the 7th August, and is large enough for school meetings.

The school is much in need of a physical laboratory and of a reading-room and library.

Mr. J. Hartley Smith has been away since May dangerously ill, but has made a good recovery, and hopes to resume next year.

Mr. R. Speight, M.A., B.Sc., has been appointed Lecturer in Geology at an increased salary, and Assistant Curator to the Museum, and will cease work at the High School on the 1st March next. His departure will be a great loss. He has been here nearly twenty years.

Messrs. J. D. Davey and C. M. Bevan-Brown filled the temporary vacancy caused by Mr. Smith's absence.

In the examinations of December, 1907, 63 boys presented themselves; this December (1908) there were 69; in 1906, 59; and in 1905, 32. It will be seen that the number of candidates for outside examinations has doubled. Of the 63 boys who sat in December, 1907, 21 sat for Matriculation, and 14 passed; 40 sat for Junior Civil Service or Senior Free Places, and 36 passed; 1 boy passed the Senior Civil; 2 obtained Senior Board Scholarships.

Six boys sat for the Junior University Scholarship Examination; 2 won Junior University Scholarships, one of them being first for the Dominion in Greek, French, and German; 1 won a Senior National Scholarship, 1 a Gammack Scholarship, and the other 2 were on the credit list.

Of old boys, Mr. C. A. Cotton obtained his M.Sc., with first-class honours in geology; Mr. J. Bartrum, M.Sc., with third-class honours in electricity and magnetism; and Mr. D. Florance his M.A., with first-class honours in electricity; Mr. M. Gresson, the degree of LL.B.

Old boys won seven out of the thirteen exhibitions awarded by Canterbury College at the recent annual examination. Mr. D. B. McLeod won the Sir George Grey Scholarship.

The cadets have won the Snow Shield, and also the Victory Shield, given by the Defence Department for competition among secondary schools in Canterbury.

The Old Boys are setting on foot a memorial to the late Mr. R. G. Deans, one part of which will be a scholarship awarded similarly to the Rhodes Scholarship, to some boy while at school; when he leaves a medal will be given him. The first medal (for 1908) was awarded on prize-day to E. E. Crawshaw.

I am of opinion that free places are granted too easily—*e.g.*, those granted under 3c (certificates of proficiency under the age of fifteen), and those under 7b, where the restriction of age to under sixteen for the Junior Civil Service pass is omitted.

I think the study of history should be more encouraged. It does not pay to take it for Junior Civil Service, Matriculation, or Junior University Scholarships; and it is impossible to take it for Senior Board Scholarship with marks limited to 2,000. I think for all these examinations some knowledge of the great men and great deeds of the past should be compulsory.

C. E. BEVAN-BROWN, M.A., Headmaster.

## 2. WORK OF THE HIGHEST AND LOWEST CLASSES.

*Highest.*—Latin—Livy, Book I (Blackie); Virgil, *Æneid*, IV (Bell); Catullus, Tibullus, and Propertius, by Rev. A. H. Wratislaw (Bell); Myths and Legends of Ancient Rome; Bradley's Arnold; Bradley's Aids to Latin Prose; Kennedy's Revised Latin Primer; Gepp and Haigh's Latin Dictionary; Robinson's First History of the Romans; Rivington's Class Book of Latin, Unseen, Book VI. English—Romola, George Eliot (Warwick ed.); English Prose, from Mandeville to Ruskin (World's Classics); Henry V. (Pitt Press), Shakespeare; Palgrave's Golden Treasury; Nesfield's Manual; Nesfield's Historical English; English Literature, Laing (Collins and Sons). French—Molière, *Le Bourgeois Gentilhomme* (Hachette); Advanced French Composition, Duhamel (Rivington's); *Le Pêcheur d'Islande*, Pierre Loti; Longmans' Advanced French Unseen (Bertenshaw); French Grammar, Moriarty (Sonnenschein). Mathematics—Borchardt and Perrot's Trigonometry, Todhunter and Loney's Algebra; Elements of Applied Mathematics (Jessop, Bell); Hall and Stevens's School Geometry, Parts I to VI (Macmillan); Hogben's Trigonometry Tables; Pendlebury's Arithmetic. Science—Advanced Inorganic Chemistry (Theoretical) (Bailey, London, W. B. Clive). Gymnastics, Scripture, Greek.

*Lowest.*—Latin—Elementa Latina (to the end of active verbs); Scalæ Primæ; Shorter Latin Primer (for revision of verbs). English—Westward Ho!, abridged (Macmillan); Lyra Heroica (The Revenge, &c.); Nesfield's Outlines; parsing notes; dictation, composition, parsing, analysis (four forms of predicate and easy subordinate clauses); also one of sixpenny editions in Lower IV list to be read at home per term. History—First Book of British History (Tout); Longmans' Historical Series for Schools, Book I. Geography—Longmans' Geography Series, Book II; Mathematical and Physical Geography. French—As for Lower IV. Mathematics—Pendlebury's New School Arithmetic (Bell

and Sons); Hall and Stevens's School Geometry, Parts I and II, with Lessons in Experimental and Practical Geometry. Nature-study—Miall's Object-lessons, Vol. I. Art—Same as Lower III, but more advanced, and with addition of elementary model-drawing. Writing—Twice a week. Gymnasium—Two lessons a week. Singing—Novello's School Songs. Scripture.

### 3. GENERAL STATEMENT OF ACCOUNTS for the Year ended 31st December, 1908.

<i>Receipts.</i>	£ s. d.	<i>Expenditure.</i>	£ s. d.
Balance at beginning of year .. ..	695 15 8	Management—Office salaries .. ..	200 0 0
Government capitation—		Teachers' salaries—	
For free places .. ..	497 16 8	Main school .. ..	3,880 8 0
Under Manual and Technical Instruction		Preparatory department .. ..	192 10 0
Regulations .. ..	48 16 5	Speech night—prize distribution .. ..	5 12 6
Subsidy on voluntary contributions, second-		Prizes .. ..	29 8 8
ary schools .. ..	601 8 6	Printing, stationery, advertising, and books	133 16 1
Current income from reserves .. ..	3,894 3 1	Cleaning, fuel, light, &c. .. ..	56 17 5
School fees—		Maintenance of classes for manual instruc-	
Main school .. ..	969 8 0	tion .. ..	17 8 4
Preparatory department .. ..	192 10 0	Government grants for sites, building, fur-	
Interest on current account .. ..	17 17 10	niture, &c. .. ..	601 8 6
Voluntary contributions on account of		Purchases and new works .. ..	895 8 3
gymnasium building .. ..	601 8 6	Keeping grounds, &c. .. ..	128 9 7
Other receipts—		Insurance .. ..	30 19 4
Donation for special prizes .. ..	2 2 0	Buildings, equipment, &c., for manual	
Sale of old gymnastic apparatus .. ..	1 0 0	instruction .. ..	41 9 9
		Voluntary contributions .. ..	601 8 6
		Other expenditure—	
		Inspecting reserves .. ..	115 0 0
		Grants to Sports Fund and cadet corps	85 0 0
		Expenses connected with endowments ..	38 13 7
		Rent of playground .. ..	63 11 2
		Interest on loan of £5,000 .. ..	200 0 0
		Legal expenses .. ..	11 9 0
		Sundries .. ..	38 14 10
		Balance at end of year .. ..	150 4 2
	<u>£7,517 6 8</u>		<u>£7,517 6 8</u>

G. W. RUSSELL, Chairman.  
GEO. H. MASON, Registrar.

Examined and found correct.—J. K. WARBURTON, Controller and Auditor-General.

### CHRISTCHURCH GIRLS' HIGH SCHOOL.

#### Staff.

Miss M. V. Gibson, M.A.; Miss C. K. Henderson, B.A.; Miss M. Bell-Hay; Miss F. Sheard, M.A., B.Sc.; Miss K. M. Gresson, M.A.; Mrs. C. V. Longton, M.A.; Miss E. T. Crosby, B.A.; Miss G. Greenstreet, B.A.; Miss M. Barker, M.A.; Miss M. Wills; Miss L. E. Bing, B.A.; Miss N. Gardner; Miss A. Rennie; Miss H. Smith; Miss E. Burns; Miss E. Easterbrook; Captain F. Farthing.

#### 1. REPORT OF THE LADY PRINCIPAL.

At the beginning of the school year the rooms in the new wing were ready for occupation, and furnished with sufficient fittings to carry on work in them. The vast improvement in comfort effected by the five commodious, well-lighted, and well-ventilated class-rooms has been thoroughly appreciated by the staff and the pupils, and has made the general working arrangements of the school infinitely easier to organize. The whole school now meets for prayers every morning in the assembly hall, and on days when the weather is unfit for outside drill the physical-exercise classes are held in the upstairs corridor.

Want of funds has unfortunately delayed the much-needed equipment of the science-room, but a sufficient sum for the purpose has been placed upon the estimates for 1909. Even with the increased amount of capitation for free pupils which will be afforded next year by the Education Act Amendment, it will take some years to wipe off the overdraft on the new building and furniture account, and meanwhile additional playground and cloak-room accommodation and numerous fittings and articles of furniture are still badly needed; but when these expenses have once been met, the financial condition of the school will be better than in past years.

At the December, 1907, University examinations 4 pupils sat for the Junior University Scholarship Examination, of whom Catherine Reynolds and Lydia Suckling were awarded Senior National Scholarships and also the two Gammack Scholarships; Lilian Griffin matriculated in the credit list, and received a Normal Training College Bursary; and Annie Hulston matriculated. Two pupils sat for the Medical Preliminary Examination, and passed. Twenty-one sat for Matriculation, and 19 passed, all but one taking Latin as a subject.

Nine pupils sat for the Junior Civil Service Examination, and 7 passed, 6 being placed in the credit list, and 1 (Agnes Satchell) twelfth on the list, being the highest Canterbury lady candidate.

For the Senior Free Place Examination 46 were examined, and 32 passed.

Senior Board of Education Scholarships were awarded on the results of the Senior Free Place Examinations to Eileen Fairbairn, Melvina Miles, Elizabeth Harvey, and Rachel Smith.

As several parents made application for the admission of young children, a Lower Department class was formed at the beginning of the second term, and was placed under the care of Miss Mary Wills, an experienced primary-school teacher.

The roll for the year has been—First term, 208 ; second term, 211 ; and third term, 202.

The health of the pupils during the year has been excellent, the average attendance during the third term being no less than 95 per cent. of the roll-number. At the middle of the second term Miss E. Crosby, B.A., was given leave of absence on account of ill-health until the end of the year.

In the first week of November the technical classes were inspected by Mr. Isaac, and a week later the school was visited by the Inspector-General and Dr. Anderson, who inspected the general working of the classes, and held an individual examination of candidates for senior free places.

The most conspicuous successes of past pupils during the year are as follows : Gwen Opie, degree of M.A., second-class honours in mathematics and mathematical physics ; Nellie Slocombe, degree of M.A., second-class honours in Latin and French ; Priscilla Dyson, degree of M.A., third-class honours in Latin and English ; Isabella Griffin, degree of M.A., third-class honours in English and French ; Ellen Baxter, Jane Cardwell, Marion Reese, and Kathleen Wells all took the degree of B.A. ; Laura Christensen tied with another student for the Sir George Grey Scholarship, and was also awarded the exhibition in physical science at Canterbury College ; Irene Wilser gained the exhibition in Latin at Canterbury College, Alice Candy that in economics, Edith Jackson that in pure mathematics, Helen Leversedge that in French, and Agnes Merton that in German. M. V. GIBSON, M.A.

## 2. WORK OF THE HIGHEST AND LOWEST CLASSES.

*Highest.*—All work as for Junior University Scholarship Examination. Subjects—Mathematics, English, Latin, French, science (botany and elementary physics (heat)).

*Lowest.*—The lowest form is Form IV, Lower, and, with the exception of 2 pupils, is composed of girls holding proficiency certificates for Standard VI. The work includes higher work than that of Standard VI in primary subjects, and a first year's course in secondary subjects. Subjects—English (grammar, composition, and literature) ; arithmetic and elementary algebra ; French ; natural science (botany or physiology and laws of health) ; English history or geography ; Latin, or book-keeping, shorthand or extra spelling and writing ; drawing (elementary design and colour-work) ; plain sewing ; dress-cutting ; cooking ; drill ; singing.

## 3. GENERAL STATEMENT OF ACCOUNTS for the Year ended 31st December, 1908.

<i>Receipts.</i>	£	s.	d.	<i>Expenditure.</i>	£	s.	d.
Government capitation—				Dr. balance at beginning of year .. .. .	18	3	6
For free places .. .. .	1,716	13	4	Management—Office salaries .. .. .	60	0	0
Under Manual and Technical Instruction				Teachers' salaries—			
Regulations .. .. .	50	7	1	Main school .. .. .	2,082	4	0
Endowments—				Preparatory department .. .. .	37	16	0
Current income from reserves .. .. .	322	8	5	Grant in aid to boardinghouse .. .. .	50	0	0
Interest on moneys invested and on unpaid				Examinations—			
purchase-money .. .. .	161	1	6	Examiners' fees .. .. .	3	3	0
School fees—				Speech night, prize distribution .. .. .	8	11	6
Main school .. .. .	325	10	0	Scholarships and exhibitions .. .. .	76	13	4
Preparatory department .. .. .	37	16	0	Prizes .. .. .	20	13	8
Other receipts—Proceeds from cooking-class	16	2	10	Printing, stationery, advertising, and books	65	14	11
Dr. balance at end of year .. .. .	572	12	8	Cleaning, fuel, light, &c. .. .. .	33	2	11
				Maintenance of classes for manual instruction .. .. .	23	6	2
				Government grants for site, buildings, furniture, &c., manual instruction .. .. .	39	12	0
				Purchases and new works .. .. .	596	19	9
				Repairs, &c. .. .. .	42	15	2
				Insurance .. .. .	19	4	9
				Other expenditure—			
				Inspecting reserves .. .. .	8	0	0
				Rent of hockey-ground .. .. .	2	14	6
				Attending to clocks and tuning pianos .. .. .	7	5	0
				Sundries .. .. .	6	11	8
	£3,202	11	10		£3,202	11	10

G. W. RUSSELL, Chairman.

GEO. H. MASON, Registrar.

Examined and found correct.—J. K. WARBURTON, Controller and Auditor-General.

## CHRIST'S COLLEGE GRAMMAR SCHOOL.

### Staff.

Rev. C. H. Moreland, M.A. ; Rev. Canon F. A. Hare, M.A. ; Mr. E. G. Hogg, M.A. ; Mr. A. E. Flower, M.A., M.Sc., Mr. P. McCallum, B.Sc. ; Mr. E. Jenkins, M.A. ; Mr. J. Monteath, B.A. ; Mr. J. E. S. Dudding, M.A. ; Mr. H. Hudson, B.A. ; Mr. H. B. Lusk, M.A., LL.B. ; Mr. F. P. Turner ; Mr. G. H. Merton, B.A. ; Mr. C. L. Wiggins ; Mr. A. J. Merton ; Mr. J. M. Madden ; Captain Farthing.

## 1. WORK OF THE HIGHEST AND LOWEST CLASSES.

*Highest.*—Work as for Junior Scholarships at the University of New Zealand.

*Lowest.*—Reading and spelling—Imperial Reader, III. Repetition—Children's Treasury, Part II, Selections. Grammar and composition—The principal parts of speech ; construction of sentences ; easy descriptive composition and letters. History—Longmans' Short Stories from English History. Divinity—The text of the Catechism to end of The Desire, with meanings of the words (Francis) ; Ainslie's Gospel Lessons. Arithmetic—Numeration ; the simple rules up to and including long division. Geography—Zealandia, Parts II and III.

## 2. GENERAL STATEMENT OF ACCOUNTS for the Year ended 15th May, 1908.

<i>Receipts.</i>		£	s.	d.	<i>Expenditure.</i>		£	s.	d.	
Balance at beginning of year	.. ..	416	11	11	Cost of management	.. ..	263	13	7	
<b>Endowments—</b>					Teachers' salaries and allowances	.. ..	3,520	19	2	
Price of land sold (Capital Account)	.. ..	1,316	15	0	<b>Examinations—</b>					
Temporary investment repaid (Capital Account)	.. ..	1,350	0	0	Examiners' fees	.. ..	21	16	3	
Current income from land	.. ..	2,101	4	3	Other expenses of examination	.. ..		1	15	11
Current income from scholarships endowments	.. ..	728	0	4	Scholarships	.. ..	693	19	6	
Interest on moneys invested and on unpaid purchase-money	.. ..	260	4	4	Prizes	.. ..	48	5	8	
School fees	.. ..	3,098	4	6	Material for classes other than classes for manual instruction	.. ..	33	0	5	
Old buildings sold, and other refunds	.. ..	189	16	11	Printing, stationery, and advertising	.. ..	94	15	10	
Voluntary contributions on account of general purposes of the school	.. ..	1,926	19	8	Cleaning, fuel, light, &c.	.. ..	193	5	4	
<b>Other receipts—</b>					New works	.. ..	126	19	8	
Depreciation and sinking funds transfer to Capital Account (see <i>contra</i> )	.. ..	698	6	9	Fencing, repairs, &c.	.. ..	235	0	6	
Sundries unclassified	.. ..	3	0	0	Miscellaneous (rates, insurances, &c.)	.. ..	57	12	0	
					Interest on current account	.. ..	8	15	8	
					<b>Endowments, Sales Account—</b>					
					Proceeds invested	.. ..	2,250	0	0	
					Buildings	.. ..	1,838	0	0	
					Miscellaneous (surveys, &c.)	.. ..	13	0	0	
					<b>Other expenditure—</b>					
					Expenses connected with land estate	.. ..	114	12	4	
					Expenses connected with school chapel	.. ..	18	1	3	
					Grant, Boys' Games Fund	.. ..	286	19	5	
					Grant, Boys' Cadet Fund	.. ..	28	7	6	
					Depreciation and sinking funds (transfer; see <i>contra</i> )	.. ..	698	6	9	
					Balance at end of year	.. ..	1,546	16	11	
		<u>£12,089</u>	<u>3</u>	<u>8</u>			<u>£12,089</u>	<u>3</u>	<u>8</u>	

C. CHRISTCHURCH, Warden.

W. GUISE BRITAN, Bursar.

Examined and found correct.—A. A. M. MCKELLAR, Auditor.

## AKAROA HIGH SCHOOL.

## GENERAL STATEMENT OF ACCOUNTS for the Year ended 31st December, 1908.

<i>Receipts.</i>		£	s.	d.	<i>Expenditure.</i>		£	s.	d.
Balance at beginning of year	.. ..	397	18	3	Cost of management—Bank fees	.. ..	0	10	0
Current income from reserves	.. ..	133	0	11	Prizes	.. ..	3	0	0
					Printing, stationery, and advertising	.. ..	3	5	0
					Miscellaneous (surveys, &c.)	.. ..	2	2	0
					<b>Paid to North Canterbury Education Board—</b>				
					Grant to District High School	.. ..	150	0	0
					Balance at end of year	.. ..	372	2	2
		<u>£530</u>	<u>19</u>	<u>2</u>			<u>£530</u>	<u>19</u>	<u>2</u>

H. C. JACOBSON Chairman and Secretary.

## ASHBURTON HIGH SCHOOL.

*Staff.*

Mr. W. F. Watters, B.A.; Mr. E. T. Norris, M.A.; Miss F. E. Kershaw, M.A.; Miss M. Steven, B.A., B.Sc.

## 1. REPORT OF THE BOARD OF GOVERNORS.

The *personnel* of the Board is as follows: Mr. J. Tucker (Chairman), His Worship the Mayor (Henry Davis, Esq.), and Messrs. C. Reid, S. S. Chapman, J. Studholme, W. B. Denshire, and W. H. Collins; Mr. J. Studholme being appointed by the County Council in the place of Mr. Stitt, who retired from the County Council.

The Board sincerely regretted the death of Mr. D. Thomas, the late Chairman, who had always taken a great interest in the school, and to whom was due much of the credit in the school-buildings being completed and a science-room erected. Mr. Joshua Tucker was elected Chairman in his place.

The Board held eleven meetings, the average attendance being six.

During the year the work has been carried on in an efficient manner, the staff being the same as the previous year. Six pupils passed the Matriculation Examination, 1 pupil obtained a Senior Education Board Scholarship, 12 pupils passed the Junior Civil Service Examination, 2 passing with credit, 1 pupil passed the Senior Free Place Examination.



## TIMARU HIGH SCHOOL.

## Staff.

*Boys' School.*—Mr. G. A. Simmers, M.A.; Mr. R. H. Rockel, M.A.; Mr. G. T. Palmer, M.A.; Mr. A. G. Johnson, B.Sc.; Mr. R. Grant; Mr. G. O. Chaplin; Sergeant-Major Healey.

*Girls' School.*—Miss B. M. Watt, M.A.; Miss J. Mulholland, M.A.; Miss O. Cunningham, B.A.; Miss E. Reid.

## I. WORK OF THE HIGHEST AND LOWEST CLASSES.

*Highest.*—*Boys' School:* English (to Junior Scholarship standard)—Nesfield's Historical Grammar; Nichol's Questions and Exercises; Second Middle English Primer; Essays of Elia; Lycidas; Fights for the Flag; Henry V. Mathematics (to Junior Scholarship standard)—Hall and Knight's Algebra; Hall and Stevens's Geometry; Borchardt's and Perrott's Trigonometry; Tutorial Arithmetic. Latin (to Junior Scholarship standard)—Tutorial Grammar; Hints on Latin Prose (Waters); Latin Models (Lunn's); Junior Examination Papers (Botting); Livy, XXII; Horace, Odes, I. French (to Junior Scholarship standard)—Tutorial Grammar; Tutorial Composition; Class-work in French Composition; Junior Examination Papers (Jacob); L'Avare and Le Misanthrope (Molière); Voyage aux Pyrénées (Taine). German (to Junior Scholarship standard)—Advanced Grammar (Aue); Prose Composition (Buchheim); Ballads (Schiller); Culturgeschichte (Riehl); Road to Italy (Goethe). *Girls' School:* English—Nesfield's English Grammar Past and Present; Great Authors, Part III; Chaucer, I. The Prologue; Autocrat at the Breakfast Table; Shakespeare's As You Like It; Anthology of English Verse. Burns and Hight's Exercises; Shakespeare's Julius Cæsar. Latin—Bryan's Latin Prose Exercises; Arnold's Latin Prose Composition; Allan's Elementary Latin Grammar; Matriculation Selections from Latin Authors. French—Matriculation French Course; Bué's Idioms; Advanced French Reader. Mathematics—Pendlebury's Arithmetic; Hall and Knight's Algebra; Borchardt and Perrott's Trigonometry; Hall and Stevens's Geometry, Books I to VI, I to IV, V and VI. Botany—Study of Botany, by Dendy and Lucas; Evans's Botany. Mechanics—Loney's Mechanics and Hydrostatics for Beginners. History—Creighton's History Primer, Rome; Wilkins's Primer of Roman Antiquities.

*Lowest.*—*Boys' School:* English—Nesfield's Outlines; Nesfield's Oral Composition; Cook's Second Voyage; Cowper's John Gilpin and other Poems. Arithmetic—Bradford's Arithmetic. Mathematics—Hall and Stevens's Geometry, Part I; Baker and Bourne's Algebra. Latin—Macmillan's Shorter Course, I. French—Siepmann's Course, First Year. Geography—Bosworth's Short Geography of the World; Physical Geography (Longmans, V). Electricity—Elementary (theoretical and practical), no book used. *Girls' School:* English—Nesfield's Outlines of English Grammar; Oral Exercises in English Composition; Scott's Ivanhoe; Globe Poetry Reader for Advanced Classes; Word Builder and Speller. Latin—Bell's Scalæ Primæ; Bell's Concise Latin Course; Bell's Latin Course, Part I. French—Méthode Naturelle; La Fleur de Neige. Mathematics—Pendlebury's Arithmetic; Baker and Bourne's Algebra, Part I; Hall and Stevens's Geometry, Books I to IV. Botany—Youman's Botany. History—Struggle for Freedom. Geography—Longmans' Geographical Series, Book II. The World. Scripture—Life of Christ.

## 2. GENERAL STATEMENT OF ACCOUNTS for the Year ended 31st December, 1908.

<i>Receipts.</i>		£	s.	d.	<i>Expenditure.</i>		£	s.	d.
Balance at beginning of year .. ..		1,543	11	11	Management—				
Government grants for buildings, furniture, fittings, and apparatus for recognised school classes for manual instruction ..		2	10	0	Office salary .. ..		77	5	0
Government capitation—					Other office expenses .. ..		22	11	6
For free places .. ..		669	11	8	Other expenses of management—				
Under Manual and Technical Instruction					Members' travelling-expenses .. ..		16	15	0
Regulations .. ..		78	13	8	Endowments expenses .. ..		44	17	8
Current income from reserves .. ..		1,979	15	10	Teachers' salaries and allowances .. ..	2,051	10	0	
Interest on moneys invested and on unpaid purchase-money .. ..		85	16	4	Scholarships .. ..		10	0	0
School fees .. ..		126	6	8	Prizes .. ..		29	3	11
Interest on current account .. ..		11	0	10	Printing, stationery, and advertising .. ..		43	10	4
Other receipts—					Cleaning, fuel, light, &c. .. ..		132	12	9
Improvements on reserves .. ..		640	0	0	Maintenance of classes for manual instruction .. ..		50	17	4
Half-cost of fencing .. ..		10	8	3	Government grants for site, buildings, furniture, &c.—Manual instruction .. ..		2	13	0
Rent of gymnasium and gas .. ..		2	13	4	Purchases and new works .. ..		145	17	6
Dr. balance at end of year .. ..		36	0	11	Fencing, repairs, &c. .. ..		54	14	3
					Miscellaneous (rates, &c.) .. ..		43	2	2
					Buildings, equipment, &c., for manual instruction .. ..		6	17	6
					Site or buildings .. ..	1,900	0	0	
					Other expenditure—				
					Rent of school telephone .. ..		5	4	6
					Refund of fees .. ..		9	0	0
					Improvements on reserves .. ..		640	0	0
		<u>£5,186</u>	<u>9</u>	<u>5</u>			<u>£5,186</u>	<u>9</u>	<u>5</u>

WM. B. HOWELL, Chairman.

A. BELL, Secretary.

Examined and found correct.—J. K. WARBURTON, Controller and Auditor-General.



tion. The Governors have pleasure in reporting that the dormitories and class-rooms have been well designed, and all modern improvements instituted, the new wing adding considerably to the architectural beauty of the school. Further additions in the shape of a gymnasium and physical and science laboratories have been erected, and are now being equipped.

The Board of Governors have to thank the Minister of Education for a grant towards the heavy financial burden undertaken last year.

## 2. WORK OF THE HIGHEST AND LOWEST CLASSES.

*Highest.—Boys' School:* Latin.—Kennedy's Primer; Bradley's Arnold; Cicero, De Officiis, III; Livy, Book XXI; Bryan's Cæsar's Prose; Rivington's Latin Unseens, Book XI. English—Skeat's Chaucer's Prologue; Nesfield's English Grammar; Shakespeare's Julius Cæsar, and Merchant of Venice; Spenser's Faerie Queene, Book I; Nichol's Primer of Composition; Thackeray's Esmond, Hawthorne's Scarlet Letter. French—Wellington College French Grammar; Duhamel's Advanced French Prose; Weekley's French Prose Composition; Berthou's Modern French Prose; Berthou's Modern French Verse; French Unseens. Mathematics—Hall and Stevens's Geometry, I–VI; Baker and Bourne's Algebra; Hall and Knight's Trigonometry. Science—Heat, Draper's Heat; Chemistry. Tutorial Chemistry (Stage II), Newell's Inorganic Chemistry. *Girls' School:* English—Shakespeare, As You Like It, Julius Cæsar, and Richard II; Spenser, Faerie Queene, canto ii; Lamb, Selected Essays of Elia; Nesfield's Grammar Past and Present, Part III, to page 369; composition, &c. French—Chardenal's Advanced Course, to page 114; Wellington College French Grammar (Eve and De Baudiss), Part II; Vecqueray's Examination Papers, to 140; Blouet's French Composition, Part III (selected); Boielle, French Poetry, to page 122; Daudet, Le Petit Chose, to page 98; Saint-Germain, Pour Une Épingle, to page 76. Latin—Bradley's Arnold Latin Prose composition, page 274 to end; Bryan's Prose Extracts: Allen's Latin Grammar, to page 104, and from 118 to 122; Cicero, De Senectute and De Amicitia; Virgil, Æneid, VI; Horace's Odes, Book III, a few selected. Roman History—Merivale's and Puller's School History, to page 181. Science—(a) Heat, Glazebrook's Heat (the whole subject as for Junior University Scholarship Examination); (b) botany, Dendy and Lucas (the types as for Junior University Scholarship course), orders (as for Matriculation), and general morphology. Mathematics—(a) Arithmetic, Pendlebury's School Arithmetic and Goyen's Higher Arithmetic (the whole subject); (b) geometry, Hall and Stevens, Part VI; (c) algebra, Hall and Knight's Elementary Algebra, as for Junior University Scholarship Examination; (d) trigonometry, Locke's Elementary Book, to logarithms. History (Form Va)—Ransome's Matriculation Period. Geography (Form Va)—Longmans, III. Zoology (Form Va)—Furieux. Scripture—The Acts of the Apostles.

*Lowest.—Boys' School:* Latin—Elementa Latina; Haye's Junior Latin Course (Accidencio, and exercises of five declensions only). English—Yoxall's Speller (the whole); Nesfield's Oral Exercises in English Composition; Nesfield's Junior Course of English Composition; Irving's Rip Van Winkle; Dunlop's Grammar; selected English verse. French—Chardenal's First French Course. History—Murdoch's Struggle for Freedom. Geography—Longmans' No. V (physical). Mathematics—Baker and Bourne's First Algebra; Hall and Stevens's Lessons in Experimental Geometry; Laing's Arithmetic, Part I. Science—Murché's Physiology; Roscoe's Primer of Chemistry. *Girls' School:* English—Bowen's English Literature; Nesfield's Manual English Grammar, to page 80; parsing, analysis, and composition. French—Bell's First French Course, to end of book. Geography—Longmans, Part II; British Isles and possessions; France; United States; Islands of Pacific. Physiography—Rocks, springs, rivers, geysers, ocean and tides, currents, winds, volcanoes, &c.; rotation, revolution, latitude, longitude, &c. Arithmetic—Pendlebury's School Arithmetic, to page 233. Algebra—Baker and Bourne, Elementary Algebra, to page 44. Geometry—Eggar's Practical Geometry, to page 95.—Botany—Elementary work on root, stem, leaf, and flower; a few natural orders, as for Junior Civil Service Examination (Evans's Elementary Botany). Physiology—Murché's Elementary Botany, to page 86 (to respiration).

## 3. GENERAL STATEMENT OF ACCOUNTS for the Year ended 31st December, 1908.

Receipts.		£	s.	d.	Expenditure.		£	s.	d.
Balance at beginning of year	..	978	14	8	Management—	..	142	10	0
Government grants for sites, building, furniture, &c. (general purposes)	..	550	0	0	Office salary	..	..	5	0
Government capitation for free places	..	832	3	4	Other office expenses	..	..	39	16
Current income from reserves	..	1,735	8	2	Other expenses of management	..	..	1,928	9
Paid by School Commissioners	..	177	7	4	Teachers' salaries and allowances	..	..	3	10
School fees	..	886	15	0	Scholarships	..	..	5	2
Books, &c., sold, and other refunds	..	5	14	0	Prizes	..	..	22	2
Interest on fixed deposit (scholarship)	..	7	0	0	Printing, stationery, and advertising	..	..	110	9
Voluntary contributions on account of general purposes of the school	..	237	17	10	Cleaning, fuel, lighting, &c.	..	..	550	0
Dr. balance at end of year	..	1,252	3	7	Government grants for site, buildings, furniture, &c.	..	..	3,675	15
					Purchases and new works	..	..	39	2
					Fencing, repairs, &c.	..	..	49	0
					Miscellaneous (rates, insurance, &c.)	..	..	3	15
					Proceeds from sales invested	..	..	29	1
					Miscellaneous (surveys, &c.)	..	..	25	0
					Other expenditure—	..	..	10	0
					Refunds	..	..	5	5
					Subsidy (magazine)	..	..	19	2
					Valuator's fees	..	..	..	..
					Petty expenses	..	..	..	..
								£6,663	3
								11	11

D. SUTHERLAND, Chairman.

A. A. MCKINNON, Secretary.

Examined and found correct, except that the payment of £11 5s. (members' expenses to Wellington *re* extensions) is without authority of law.—J. K. WARBURTON, Controller and Auditor-General.



## OTAGO BOYS' AND GIRLS' HIGH SCHOOLS.

*Staff.*

*Boys' School.*—Mr. W. J. Morrell, M.A.; Mr. M. Watson, M.A.; Mr. J. Macpherson, F.E.I.S.; Mr. F. H. Campbell, M.A.; Mr. R. A. McCullough, M.A.; Mr. E. J. Parr, M.A., B.Sc.; Mr. J. Reid, B.A.; Mr. J. G. Fullarton, B.A.; Mr. H. Chapman, B.A.; Mr. W. A. Armour, M.A.; Mr. J. G. Paterson, M.A., M.Sc.; Mr. R. Coghill; Mr. D. Sherriff; Mr. J. Hanna.

*Girls' School.*—Miss M. E. A. Marchant, M.A.; Miss F. M. Allan, M.A.; Miss H. Alexander, B.A.; Miss S. C. C. McKnight, M.A., M.Sc.; Miss E. E. Little; Miss F. Campbell, M.A.; Miss L. A. N. Downes, B.A.; Miss M. W. Alves; Miss M. McLeod; Mr. W. O. Taylor, F.R.C.O.; Miss J. C. Longford; Mr. J. Hanna.

## I. REPORT OF THE BOARD OF GOVERNORS.

In accordance with section 8 of "The Otago Boys' and Girls' High Schools Act, 1878," and in obedience to circular from the Education Department dated the 5th December last, I have the honour to forward report of the Board of Governors Otago Boys' and Girls' High Schools for year ended 31st December, 1908.

The schools were inspected in March and April by the Inspector-General of Schools and Mr. J. H. Gill, who expressed satisfaction generally with the efficiency of the staff and the progress of the pupils.

In view of the vote from Parliament last session, the Board has taken steps to obtain competitive designs for a new girls' high school from architects throughout the Dominion. The design selected will be submitted for your approval in due course, and the Board hopes to be in a position to invite tenders for a section of the building at an early date, provided that it can be erected for approximately £9,000.

The information asked for in circular before referred to, with balance-sheet and statement of income and expenditure for year ended 31st December, 1908, duly certificated to by the Controller and Auditor-General, was forwarded to your Department on the 30th March last.

## 2. WORK OF THE HIGHEST AND LOWEST CLASSES.

*Highest.—Boys' School:* English—Shakespeare, King Lear; Chaucer, Prologue; Spenser, Faerie Queene, Book I; Palgrave's Golden Treasury, Book IV; Peacock, Selected English Essays; Nesfield's Historical English and Senior Composition. Latin—Livy, Book XXIII; Cicero, Actio Prima in Verrem; Horace, Odes, Book IV; Virgil, Æneid, VIII; sight translation, prose composition, and grammar papers; Shuckburgh, History of Rome; Wilkins, Roman Antiquities. French—Coppée, Contes Choisis; Chénier, Select Poems; Mme. de Stael, French Revolution; composition, grammar, phonetics, &c. Mathematics—Arithmetic, whole subject; algebra, Baker and Bourne, to permutations; geometry, Baker and Bourne, Books I to VII; trigonometry, Pendlebury. Science—Chemistry, the metals, revision of non-metals, elementary qualitative analysis; physics, heat. *Girls' School:* English—Chaucer, The Knight's Tale and The Prologue; Shakespeare, Midsummer Night's Dream, Richard II, and King Lear; Spenser, Faerie Queene (part); Milton's Paradise Lost, Book II (part); Historical English Grammar; composition, &c.; literature, general, with readings from modern poets. Latin—Livy, Book I, chapters 7–23; Horace, Odes, Book I, Book II, 5 odes, 4 epistles; Middleton's Latin Verse; Marchant's Latin Unseens; composition, grammar, &c.; Roman History and Antiquities. French—Macmillan's Advanced Exercises; Wellington College Reader; Boielle, poetry; Barlet and Masom, Higher French Reader; grammar, composition, &c.; Berthou, Specimens of Modern French Verse; Labiche, Le Voyage de M. Perrichon. Mathematics—Arithmetic, the whole subject; algebra, to permutations and combinations, inclusive; geometry, Euclid, Books I, II, III, V, VI, VII, Baker and Bourne; trigonometry, Lock's Trigonometry, to solutions of triangles. Science—Botany, the morphology and physiology of the botanical types specified in the Junior Scholarship schedule; physics, as defined in the Junior Scholarship schedule. Commercial work—Elementary book-keeping; shorthand and typewriting.

*Lowest.—Boys' School:* English—Winbolt, English Poetry; Lamb, Adventures of Ulysses; (IIIb) Prescott, Montezuma; (IIIc) Cook's Second Voyage; Nesfield's Outlines of English Grammar. English History—Tout, First Book of British History, (IIIb) to 1727, (IIIc) to 1642. Geography—British Isles, Europe, Asia, Africa (Longmans). Latin—Macmillan's Shorter Latin Course, Part I, (IIIb) the whole, (IIIc) lessons 1–60; Bell's Scalæ Primæ, (IIIb) chapters 1–51 (selections), (IIIc) chapters 1–6. French—Siepmann's Primary French Course, Part I, (IIIb) lessons 1–24, (IIIc) 1–19. Mathematics—Workman's School Arithmetic, (IIIb) to stocks, (IIIc) to compound interest; algebra, Baker and Bourne, to easy problems; geometry, Baker and Bourne, (IIIb) Books I and II, 1–9, (IIIc) Book I, 1–29 (with omissions). Science—Elementary Physiology (Murché). *Girls' School:* English—Literature, In Golden Realms; reader, Citizen Reader; grammar, Nesfield's Manual; parsing and analysis; composition, Nesfield's Oral Exercises. French—Siepmann, Part I. Mathematics—Arithmetic, fractions, decimals, proportion, proportionate division, percentage; algebra, Hall and Knight, to simultaneous equations; Euclid, Baker and Bourne, Experimental Work, Book I. Science—Botany, structure of flowering-plants; Murché's Botany. Cookery—The theory and practice of plain cooking. Commercial Work—Elementary. Needlework—Measurements, drafting of patterns, making of blouse and skirt.



*Gray Russell Scholarship Fund Capital Account.*

<i>Receipts.</i>		£	s.	d.	<i>Expenditure.</i>		£	s.	d.
Balances on 31st December, 1908—					Balances, 31st December, 1908—				
Amount advanced on mortgage	..	800	0	0	Amount of Robertson's loan	..	800	0	0
Fixed deposit, Bank of New Zealand]	..	200	0	0	Amount in Bank of New Zealand, on fixed deposit	..	200	0	0
		<u>£1,000</u>	<u>0</u>	<u>0</u>			<u>£1,000</u>	<u>0</u>	<u>0</u>

*Richardson Cadet Corps Fund.*

<i>Receipts.</i>		£	s.	d.	<i>Expenditure.</i>		£	s.	d.
Balances brought forward, 1st January, 1908—					Amount paid Normal School cadets	..	3	10	0
Fixed deposit, Bank of New Zealand	..	20	8	0	„ Otago High School cadets	..	3	10	0
Interest on fixed deposit	..	7	0	0	Balance on 31st December, 1908, fixed deposit, Bank of New Zealand	..	20	8	0
		<u>£27</u>	<u>8</u>	<u>0</u>			<u>£27</u>	<u>8</u>	<u>0</u>

*Richardson Cadet Corps Fund Capital Account.*

		£	s.	d.			£	s.	d.
Original capital	..	150	0	0	Balance, 31st December, 1908	..	179	12	0
Amount of profit, sale Bank of New Zealand shares	..	29	12	0					
		<u>£179</u>	<u>12</u>	<u>0</u>			<u>£179</u>	<u>12</u>	<u>0</u>

*Frank Lee-Smith Prize Fund.*

1908.		£	s.	d.	1908.		£	s.	d.
Jan. 1. Balance on fixed deposit, Bank of New Zealand	..	13	5	10	Dec. 31. Balance on fixed deposit, due 2nd March, 1909	..	13	5	10
		<u>£13</u>	<u>5</u>	<u>10</u>			<u>£13</u>	<u>5</u>	<u>10</u>

*Dalrymple Prize Fund.*

<i>Receipts.</i>		£	s.	d.	<i>Expenditure.</i>		£	s.	d.
Interest on fixed deposit, Bank of New Zealand	..	3	10	0	Prize prizes, Girls' High School	..	3	10	0
		<u>£3</u>	<u>10</u>	<u>0</u>			<u>£3</u>	<u>10</u>	<u>0</u>

*Dalrymple Prize Fund Capital Account.*

		£	s.	d.			£	s.	d.
Balance on 31st December, 1908	..	100	0	0	Balance, 31st December, 1908, fixed deposit, Bank of New Zealand	..	100	0	0
		<u>£100</u>	<u>0</u>	<u>0</u>			<u>£100</u>	<u>0</u>	<u>0</u>

J. R. SINCLAIR, Chairman.

C. MACANDREW, Secretary.

Examined and found correct.—J. K. WARBURTON, Controller and Auditor-General.

## GORE HIGH SCHOOL.

*Staff.*

Mr. J. Golding, B.A.; Mr. J. Brunton, M.A.; Miss A. Sinclair.

GENERAL STATEMENT OF ACCOUNTS for the Year ended 31st December, 1908.

<i>Receipts.</i>		£	s.	d.	<i>Expenditure.</i>		£	s.	d.
Government capitation	..	200	0	0	Management—Office expenses	..	1	11	11
					Teachers' salaries and allowances	..	130	16	8
					Balance at end of year	..	67	11	5
		<u>£200</u>	<u>0</u>	<u>0</u>			<u>£200</u>	<u>0</u>	<u>0</u>

ANDREW MARTIN, Chairman.

GEORGE BRETT, Secretary.

## SOUTHLAND HIGH SCHOOL.

*Staff.**Boys' School*—Mr. T. D. Pearce, M.A.; Mr. J. Williams, B.Sc.; Mr. J. P. Dakin, B.A.; Mr. J. S. McGrath; Mr. J. Pow; Mr. W. F. J. Munro, M.A.; Mr. I. G. Galloway; Mr. F. Brookesmith; Mr. R. Brownlie.*Girls' School*—Miss C. M. Cruickshank, M.A., M.Sc.; Miss M. B. Thomson, M.A.; Miss M. H. M. King, M.A.; Miss M. Rigg, M.A., M.Sc.; Miss I. Griffin, M.A.; Miss P. Dyson, M.A.; Mr. F. Brookesmith; Mr. I. G. Galloway; Mrs. G. A. Turner.

## I. REPORT OF THE BOARD OF GOVERNORS.

In compliance with the provisions of section 98 of "The Education Act, 1908," the Board of Governors of the Southland High Schools submits the following brief report for the year ended 31st December, 1908.

*The Board.*—The *personnel* of the Board has undergone but little change during the year. In the month of April Mr. I. W. Raymond resigned his position as a member, consequent on his departure from the Dominion. The vacancy thus caused was filled by the appointment of Mr. J. Crosby Smith, F.L.S. The members of the Board were at the close of the year as follows: Mr. W. Macalister, B.A., LL.B. (Chairman), and Messrs. A. F. Hawke and John L. McG. Watson (representatives of the Government); Mr. J. Crosby Smith (who, with the Chairman, represented the Southland Education Board); and Mr. W. B. Scandrett (Mayor of Invercargill). The Board meets regularly once every month, and more frequently as occasion may demand.

*The Staff.*—The staffs of the schools have undergone some changes. In the boys' school, Mr. John McKinnon was removed by death, after a very prolonged illness, to the genuine regret of the Board and his co-workers on the staff. The vacancy thus caused was filled by the appointment of Mr. W. F. J. Munro, M.A. In the girls' school the changes have been more numerous. No less than three members of the staff retired during the year—viz., Misses M. B. Thomson, H. McKibbin, and M. L. Wilkinson. These vacancies were filled by the promotion of Miss M. H. M. King to the position of first assistant; and the appointment of Misses M. Rigg, M.A., M.Sc., Miss P. Dyson, M.A., Miss I. R. Griffin, M.A.

*The Schools.*—The schools, both boys' and girls', were visited during the year by Mr. T. H. Gill, M.A., LL.B., the Department's Inspector, and were very favourably reported on. The Board has expressed its gratification at the success of pupils attending the schools in competition at the annual public examinations held towards the close of the year. Generally speaking, the Board has every reason to feel satisfied with the work of the schools during the period to which this report relates. Further detailed reference to the work of the schools, and the progress and success of the pupils in attendance, will be found in the annual reports of the principals, copies of which will be forwarded.

*Attendance.*—The attendance of the schools has been fully maintained during the year. The total enrolments for the preceding year (1907) numbered 315, while for the year just ended the enrolments were as follows: Boys' school, 168; girls' school, 154: a total of 322—7 in excess of the previous year's record. Of these pupils, 147 boys and 124 girls were admitted under the Free Place Regulations, the remainder as fee-paying pupils.

*Buildings and Grounds.*—The school-buildings and grounds attached thereto have been maintained in excellent order during the year, and, except for expenditure on ordinary wear-and-tear, may be expected to serve the requirements of the town and surrounding districts for many years to come. Since the completion of the handsome structure which serves the purposes of a Girls' High School, and the substantial improvements effected to the boys' school, considerable expenditure has had to be incurred in asphaltting and otherwise improving the grounds. The Board has secured an additional area which it is proposed to utilise for recreation purposes in connection with the boys' school, and during the now current year considerable outlay will be necessary to fit this area for its intended purpose.

*Finance.*—The Board's position financially is quite satisfactory. Its indebtedness to the Bluff Harbour Board was reduced to £1,500 during the year, and there is every prospect that the annually recurring instalments of repayment will be duly provided for out of current revenue.

## 2. WORK OF THE HIGHEST AND LOWEST CLASSES.

*Highest.*—*Boys' School*: Forms IV, V, and VI:—English—Authors, Chaucer, Milton, Tennyson, Shakespeare (selections); Historical English Grammar; composition; literature. Latin—Authors read, Livy, Virgil, Horace (selections), Unseens in Prose and Verse; grammar; prose composition; history; antiquities. French—Authors read, selections in prose and verse; Theuriet's L'Abbé Daniel; grammar; prose composition. Mathematics—Forms VI and V, arithmetic, algebra, geometry, trigonometry (to Junior Scholarship standard): Form IV—Geometry, Godfrey and Siddons, Books I–IV; algebra, outlines to permutations and combinations; trigonometry, to end of sine S, sine T formulæ; arithmetic, general. Science—VI and V—Chemistry, inorganic; metals and non-metals; magnetism and electricity, to Junior Scholarship standard; to Matriculation standard: Form IV—Practical work, qualitative and quantitative analysis.—Forms IIIA and IIIB:—English—Authors, Shakespeare, Coleridge, Burke, Bacon, Tennyson (selections); grammar, composition, spelling. Geography—Physical and commercial. English History—1685–1900. Latin—Cæsar, Book I; Ovid (selections); Unseens in Prose and Verse; grammar and prose composition. French—Author read, Dumas' Napoleon; Unseens in Prose and Verse; grammar and prose composition. Non-Latin—Book-keeping and commercial arithmetic; European history; mensuration. Non-French—Book-keeping, commercial arithmetic and woodwork. Mathematics—Arithmetic, the whole subject; mental; algebra (to quadratics); graphs; geometry, Godfrey and Siddons, Books I to III. *Girls' School*: English—English grammar and composition for Matriculation and Junior University Scholarships; Nesfield's Manual of Grammar and Composition; History of Spelling; Chaucer and Middle English selections; Hamlet; Wordsworth epoch; selections from Wordsworth's period. Latin—Bradley's Latin Grammar; Allen's Grammar; Livy, Book XXII, 1–35; Virgil's Æneid, Book IX; Horton's Roman History; Wilkins's Roman Antiquities; sight translation; Bryan's Prose Composition. French—Wellington College; Bué's Idioms; prose selections; Macmillan's Advanced Course; Merrimée's Colomba; Poèmes Choisis; Phonetics and dictation. Mathematics—Arithmetic, the whole subject; Workman; algebra, Hall and Knight to end of permutations; geometry, Godfrey and Siddons I and II, Hall and Stevens VI; trigonometry, Locke and Loney, solution of triangles. Science—Botany, special types; special orders for Junior University Scholarship, and general treatment of subject; Glazebrook's Heat, with additional work from Cumming and Deschanel.

*Lowest.*—*Boys' School*: Science—Magnetism and electricity, to matriculation standard. Chemistry—Elementary heuristic work.—Forms I and II:—English—Authors read, Macaulay's Warren Hastings; Laureata; Captain Cook's Second Voyage; grammar, composition, and spelling.

Geography—Physical. English History—Ransome's Elementary Course. Latin—Welch and Duffield's Accidence; Latin Reader—Caesar's Invasion of Britain; composition. French—Beuzemaker's First French Course; grammar; and poems (Louis A. Barbe). Non-Latin—Book-keeping and commercial arithmetic; mensuration; European history. Non-French—Book-keeping, commercial arithmetic and woodwork. Mathematics—Arithmetic, the whole subject; mental; algebra, to H.C. factor; geometry, Godfrey and Siddons, Books I and II. Science—Elementary physics; elementary chemistry. *Girls' School*: English—West's Junior Grammar; punctuation, synthesis, direct and indirect narration (Wright's Exercises); Hawthorne's Tanglewood Tales; Scott's Ivanhoe; Longfellow's Evangeline; Colman's Poetry Book; Meiklejohn's Spelling-book. Latin as in Form III. French—II and I; Grammar, including all irregular verbs; Méthode Naturelle; compositions, L'Araignée, Le Chat, La Pomme, Ses Fruits, La Tête, Se Puits et se Seau, II; also Sa Rose, L'Arbre, Le Jardin, I; also La Chandelle, Scenes of Child Life, II, to p. 114; I, to p. 60. Mathematics—Arithmetic, Loney and Grenville's Arithmetic Rules, G.C.M., S.C.M. vulgar and decimal fractions, metric system, mensuration, proportion, practice, percentages, profit and loss, interest, discount, stocks; algebra, II to factors, I to easy equations (Longmans); Geometry, 22 propositions. Botany—Flowers of orders studied; roots, stems, leaves, flowers, fruits, germination of seed. (Youman's Botany.) Geography—The British Empire generally—Canada, West Indies, India, Burmah, and Africa. History—Ransome's Elementary History of England up to end of George the Third's reign. Sewing, drawing, cooking, singing.

3. GENERAL STATEMENT OF ACCOUNTS for the Year ended 31st December, 1908.

<i>Receipts.</i>			<i>Expenditure.</i>		
	£	s. d.		£	s. d.
Balance at beginning of year	453	11 3	Management -		
Government grants for sites, building, furniture, &c. (general purposes)	500	0 0	Office salary	50	0 0
Government capitation—			Other office expenses	62	7 6
For free places	2,657	5 0	Teachers' salaries and allowances	2,641	1 8
Under Manual and Technical Instruction Regulations	128	16 3	Physical Instructor's salary	162	10 0
Subsidy on voluntary contributions—secondary schools	25	0 0	Printing, stationery, and advertising	105	7 2
Current income from reserves	1,322	16 0	Cleaning, fuel, light, &c.	216	15 6
Paid by School Commissioners	253	19 7	Maintenance of classes for manual instruction	108	3 5
School fees	393	11 1	Site, buildings, furniture, &c.—		
Voluntary contributions on account of general purposes of the school	44	2 0	Valuation for improvements, Corporation lease, Section 1, Block XIII, on account (£800)	625	0 0
Other receipts—Gymnasium subsidies	133	6 8	Rent, Corporation lease, Section 1, Block XIII, Invercargill	14	0 0
			Fencing, repairs, &c.	179	0 3
			Miscellaneous (rates, &c.)	23	3 4
			Furniture and fittings	70	3 3
			Interest on loan	78	15 0
			Part repayment loan	500	0 0
			Other expenditure—		
			Prizes	23	17 5
			Libraries (schools)	10	0 8
			Athletics	5	0 0
			Chemicals and apparatus	46	7 0
			Sundry expenses	47	1 0
			Balance at end of year	948	14 8
	<u>£5,912</u>	<u>7 10</u>		<u>£5,912</u>	<u>7 10</u>

*Statement of Assets and Liabilities.*

<i>Assets.</i>			<i>Liabilities.</i>		
	£	s. d.		£	s. d.
Bank of New Zealand—Balance, 31st December, 1908	948	14 8	Bluff Harbour Board—Balance loan still due	1,500	0 0
School fees due and unpaid	25	10 0	Balance due compensation improvements, Section 1, Block XIII, Invercargill	175	0 0
Rents of reserves due and unpaid	183	16 9	Various small accounts—		
Free-place capitation due by Education Department for third term, 1908	872	10 10	Prizes, £24 11s. 8d.; repairs, 6s. 6d.; rates and rent, £10 17s.	35	15 2
Subsidy, gymnasium, due by Education Board	25	0 0	Advertising, £9 1s. 3d.; printing, £33 0s. 6d.	42	1 9
Subsidy due by Department on voluntary contributions	44	2 0	Ink-wells, 9s. 4d.; commission purchase lease, £20	20	9 4
			Refund of rates, £4 1s. 7d.; drainage, £2 13s. 10d.	6	15 5
	<u>£2,099</u>	<u>14 3</u>		<u>£1,780</u>	<u>1 8</u>

W. MACALISTER, Chairman.  
JNO. NEILL, Secretary.

Examined and found correct.—J. K. WARBURTON, Controller and Auditor-General.

*Approximate Cost of Paper.*—Preparation, not given; printing (2,050 copies), £52 4s.

By Authority: JOHN MACKAY, Government Printer, Wellington.—1909.

Price 1s. 3d.]

