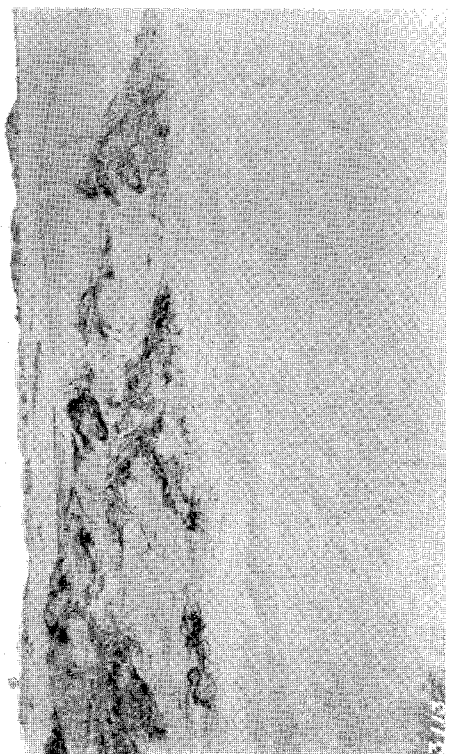




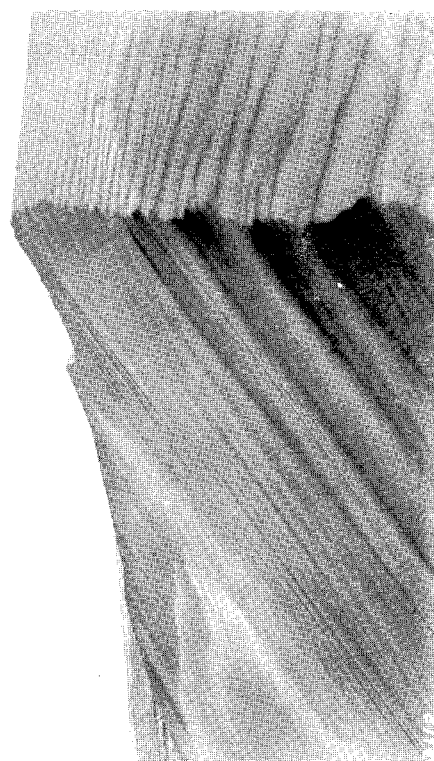
No. 18. SAND-DRIFT FROM SHORE KILLING GRASS IN DUNE-HOLLOW. IN CENTRE AND TO RIGHT *Mariscus undulatus*.



No. 20. WANDERING DUNE IN PROCESS OF FORMATION. IN CENTRE WRECKS OF *Scirpus frondosus* DUNES.



No. 17. ADVANCE OF WANDERING DUNE STOPPED BY RIVER TURAKINA. WELL-FIXED PORTION OF DUNE ABOVE.



No. 19. GENERAL VIEW OF WANDERING DUNE, FORMERLY GOOD GRAZING-LAND, SHOWING RIDGE AT SUMMIT OF SAND-FALL.