

1908.
NEW ZEALAND.

PLANS OF THE FOUR CHIEF CITIES,
WITH PARTICULARS RELATIVE TO POPULATION, BOUNDARIES, ETC.

Return to an Order of the House of Representatives, dated the 5th August, 1908.

Ordered, "That there be laid before this House plans of the four chief centres of population in the Dominion, showing,—(1) The limits within which the population given in the Gazette returns reside; and (2) the limits of the above which are under municipal administration as distinguished from county or Road Board government."—
(Mr. TANNER.)

MEMORANDUM.

1. The plan for Greater Auckland shows that the following boroughs and road districts have been considered as suburban to the city: Boroughs—Auckland, Birkenhead, Devonport, Grey Lynn, Mount Eden, Newmarket, Northcote, Parnell; road districts—Arch Hill, Eden Terrace, Epsom, Mount Albert, Mount Roskill, One-tree Hill, Point Chevalier, Remuera. Also, outlying portion of Parnell Riding, being land in the Domain with Hospital on it.

2. The plan for Greater Wellington shows the contiguous boroughs held to comprise all the suburbs of the city—Wellington, Karori, Miramar, Onslow.

3. The plan for Greater Christchurch shows that the following boroughs and road districts have been considered as suburban to the city: Boroughs—Christchurch, New Brighton, Sumner, Woolston; road districts—Avon (part) (New Brighton and Richmond Wards, and parts of Styx and Papanui Wards), Halswell (part), Heathcote (part) (Avon, Bromley, Opawa, and parts of St. Martins, and Hillsborough Wards), Riccarton (part), Spreydon. The boundaries accepted were selected at the express desire of the Board of Health, and corresponded with those of the health district, except that on the west it was found necessary to deviate a little and take certain roads rather than sections; also that the Borough of Sumner has been recently added to meet complaints as to unfair treatment.

4. The plan for Greater Dunedin shows the contiguous boroughs held to comprise all the suburbs of the city—Dunedin, Maori Hill, Mornington, North-east Valley, Roslyn, St. Kilda, West Harbour.

E. J. VON DADELSZEN,
Registrar-General.

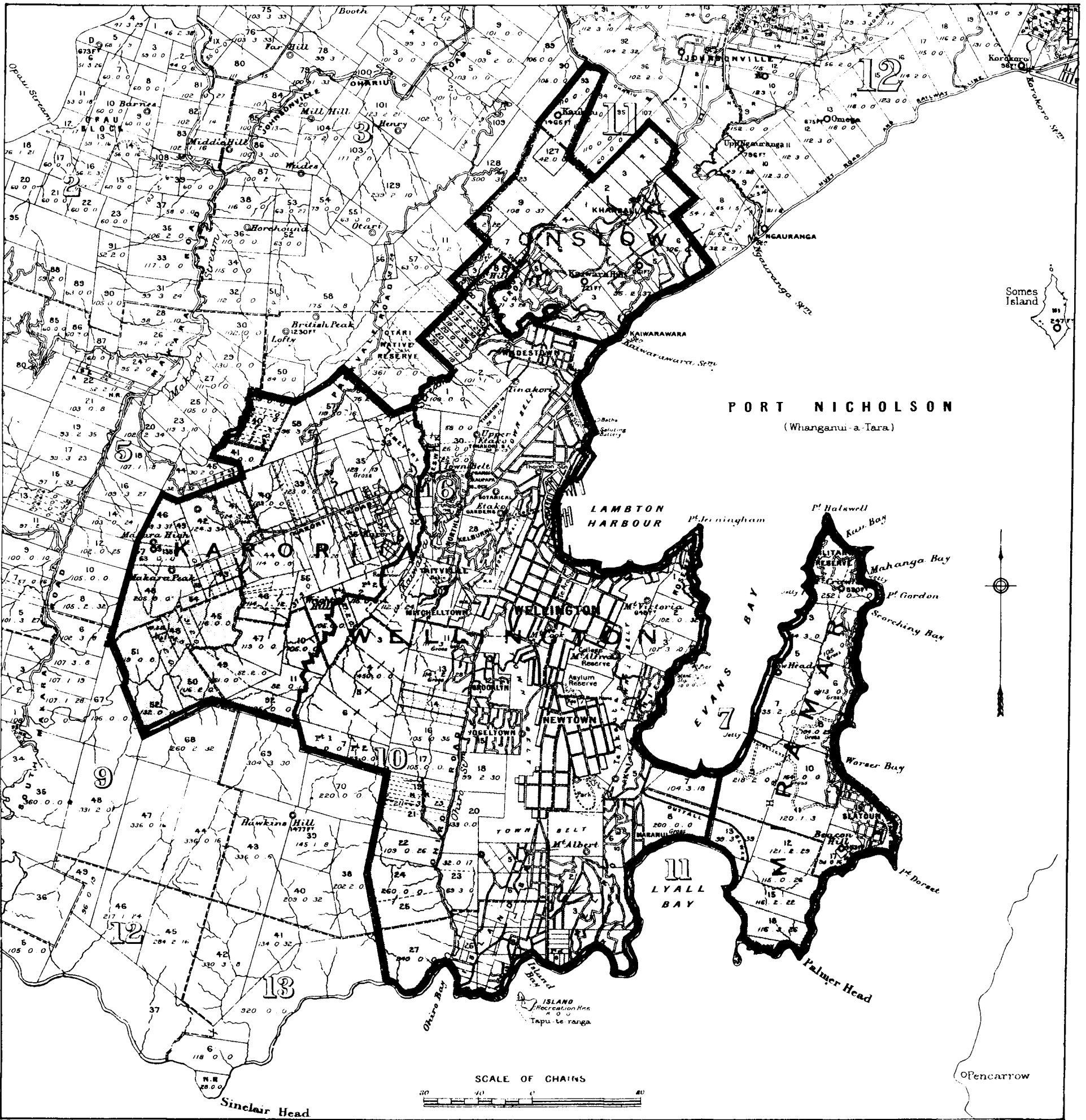
Registrar-General's Office, Wellington, 17th August, 1908.

Approximate Cost of Paper.—Preparation not given; printing (1,400 copies, exclusive of maps), 18s. 6d.

By Authority: JOHN MACKAY, Government Printer, Wellington.—1908.

Price 1s.]

[The following text is extremely faint and largely illegible. It appears to be a list or a series of entries, possibly containing names and dates. Some faint words are visible, such as "1861", "1862", "1863", "1864", "1865", "1866", "1867", "1868", "1869", "1870", "1871", "1872", "1873", "1874", "1875", "1876", "1877", "1878", "1879", "1880", "1881", "1882", "1883", "1884", "1885", "1886", "1887", "1888", "1889", "1890", "1891", "1892", "1893", "1894", "1895", "1896", "1897", "1898", "1899", "1900".]



PORT NICHOLSON
(Whanganui-a-Tara)



LAMBTON HARBOUR

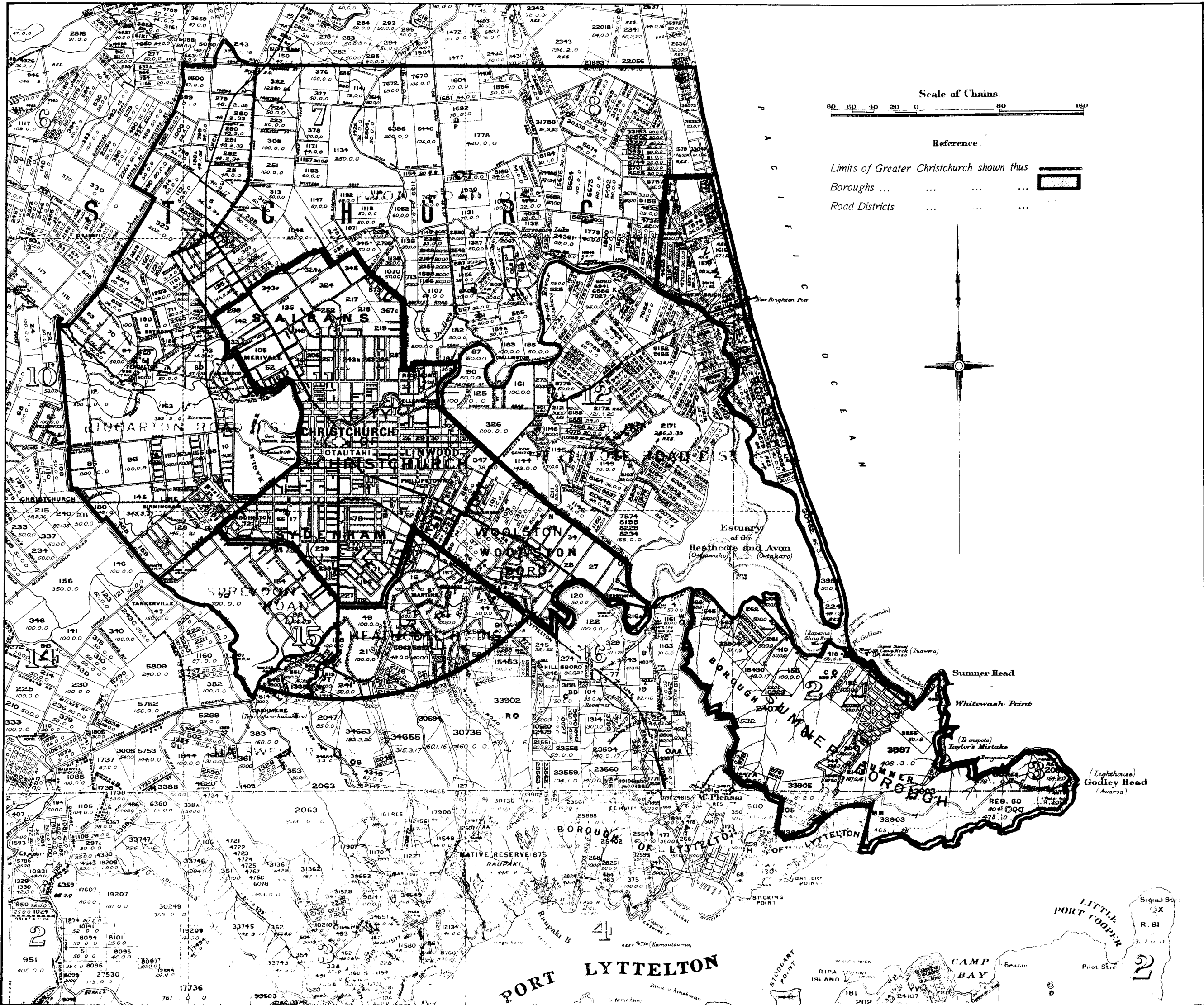
EVANS BAY

LYALL BAY

SCALE OF CHAINS

REFERENCE.

Limits of Greater Wellington shown thus 
 Boroughs ... 

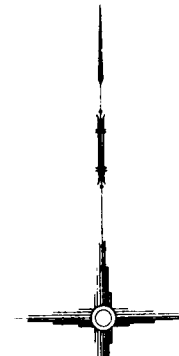


Scale of Chains.



Reference.

- Limits of Greater Christchurch shown thus
- Boroughs ...
- Road Districts ...



PORT LYTTELTON

LITTLE PORT COOPER

CAMP HAY

STODDART POINT

RIPA ISLAND

Beaumaris

Signal Station R. 61

(Lighthouse) Godley Head (Awaroa)

(Is enopote) Taylor's Mistake

Whitewash Point

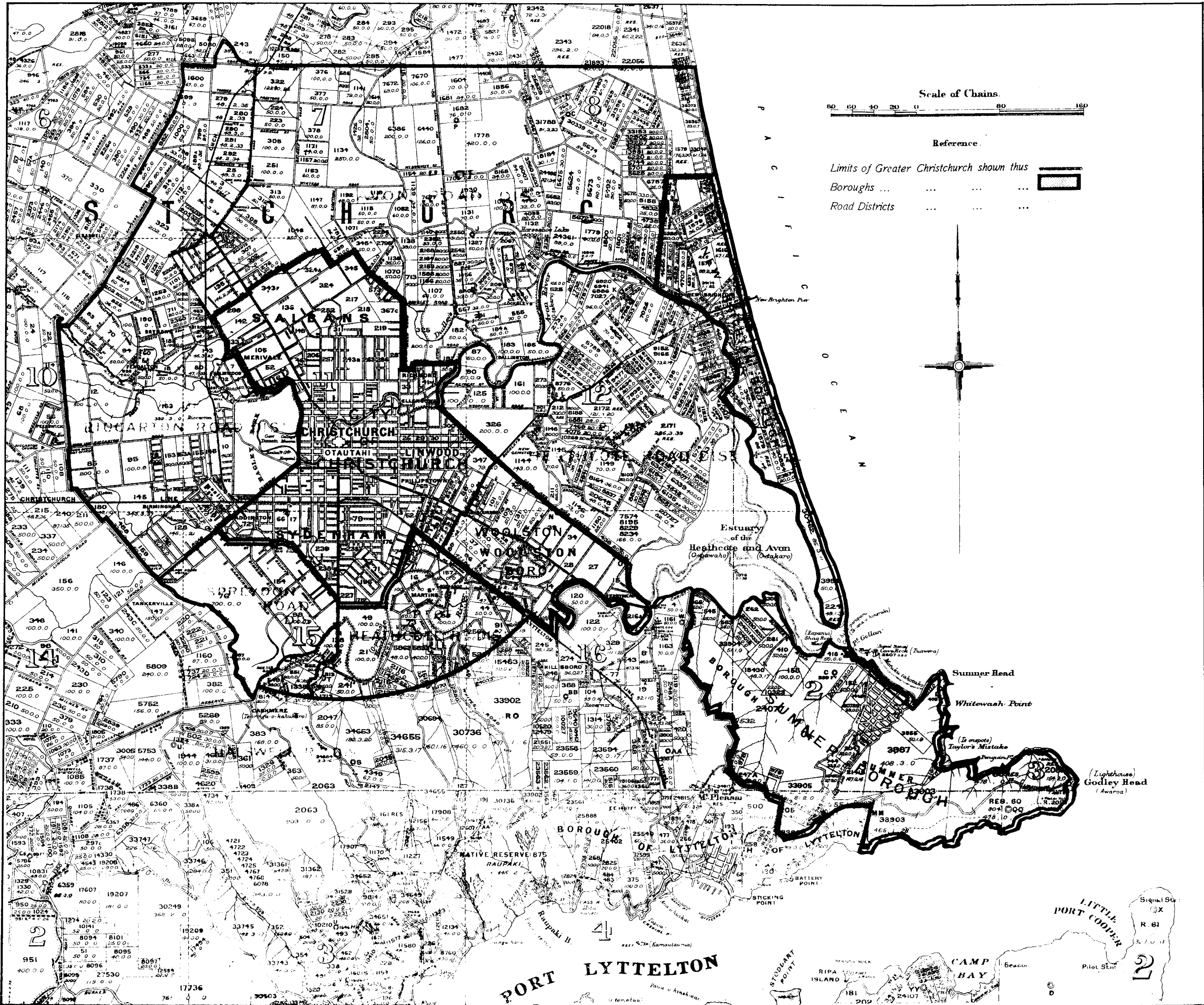
Summer Head

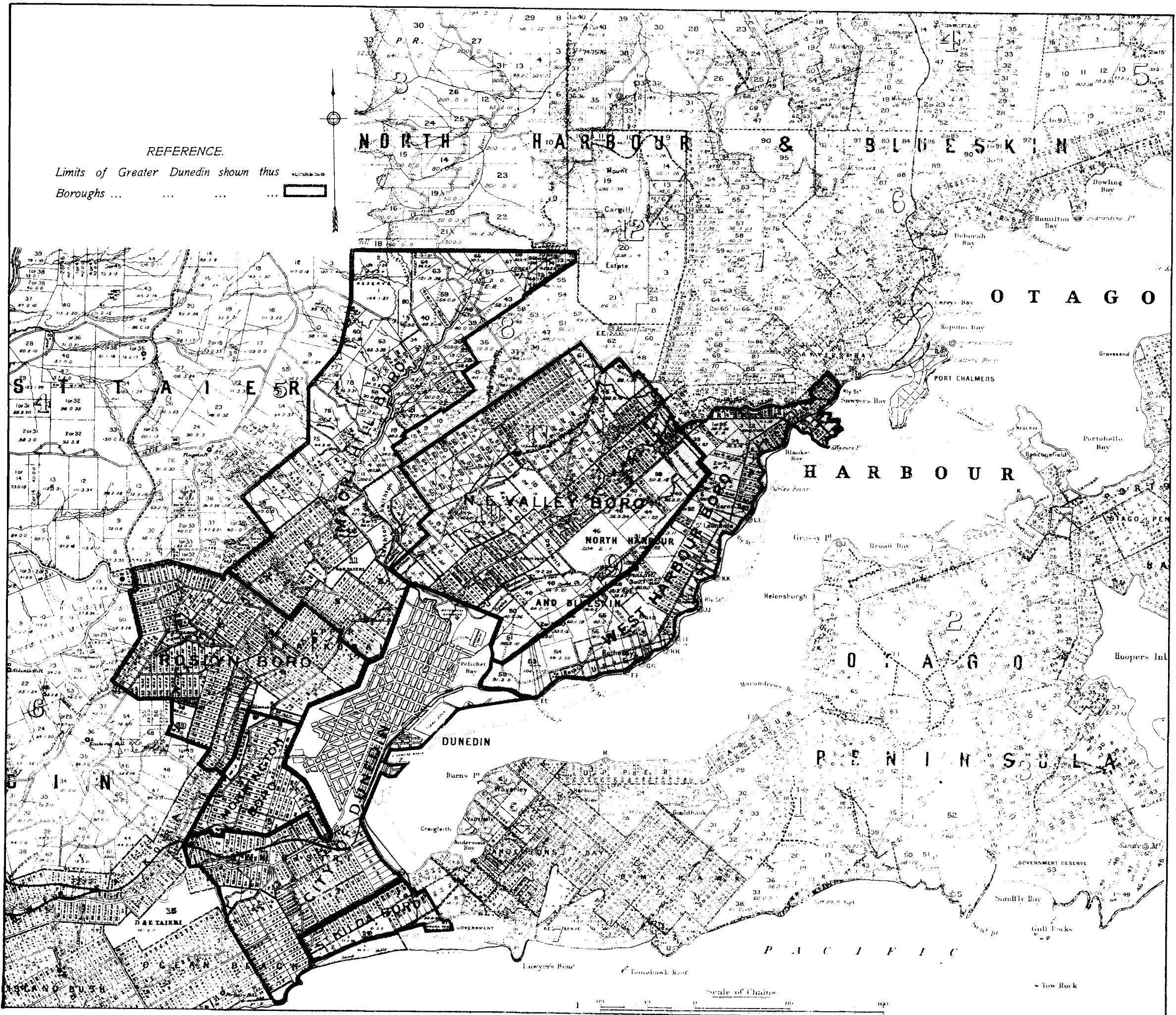
Estuary of the Heathcote and Avon (Otautahi)

BOROUGH OF LYTTELTON

BOROUGH OF SUMNER

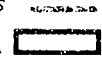
CITY OF CHRISTCHURCH





REFERENCE.

Limits of Greater Dunedin shown thus
Boroughs



Scale of Chains



Tow Rock

