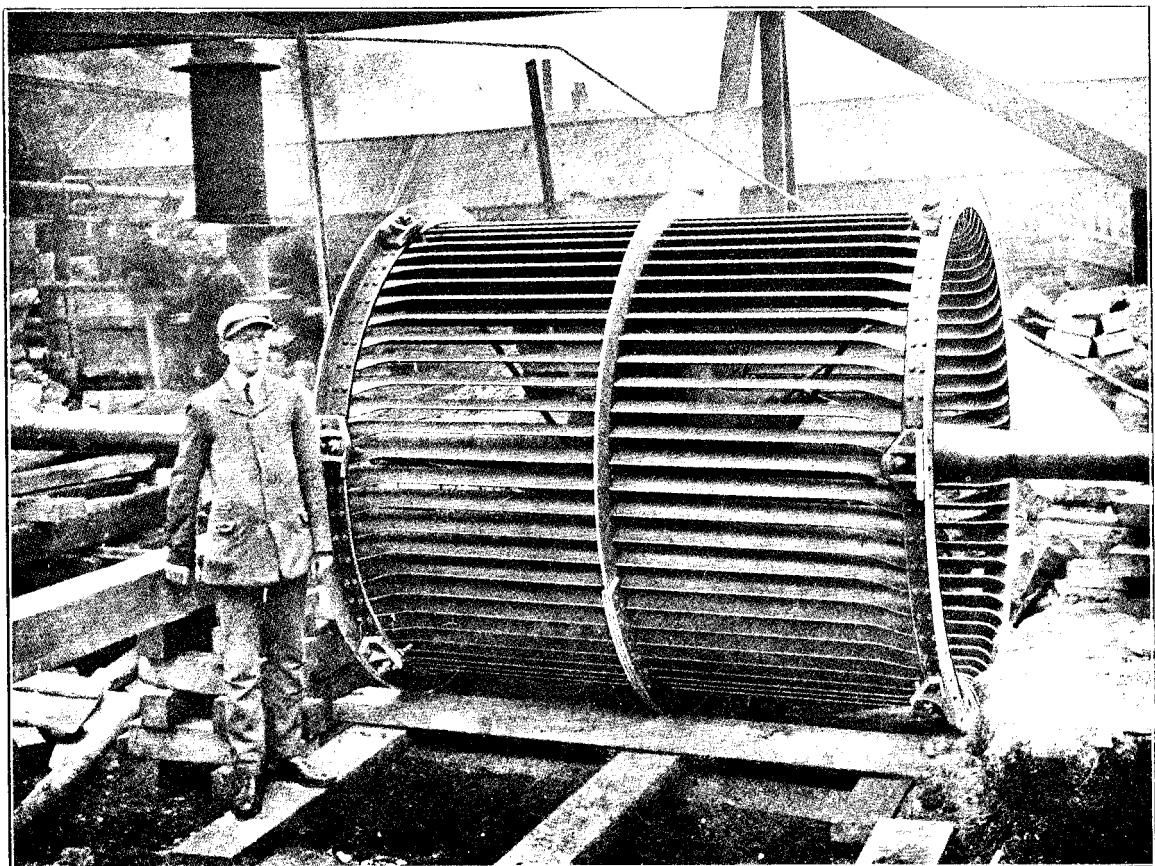


A "SIROCCO" DOUBLE INLET MINE FAN.

It is claimed that a fan of this type, 100 in. in diameter, running at 220 revolutions per minute, at 3 in. water gauge, will deliver an output of 532,000 cubic feet of air per minute.



FAN WHEEL OF A "SIROCCO" DOUBLE INLET MINE FAN.