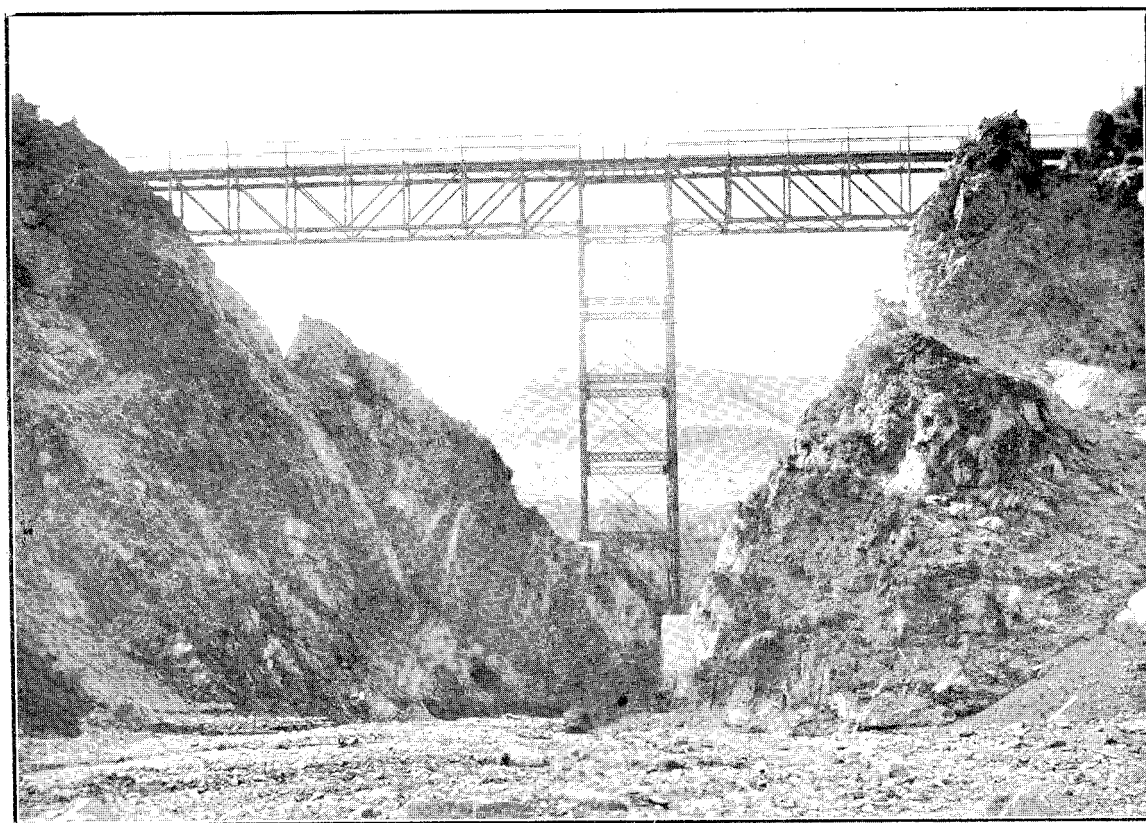


NORTH ISLAND MAIN TRUNK RAILWAY.—BRIDGE OVER HAUTAPU RIVER, AT 51 M. 12 CH. FROM MARTON JUNCTION. (ONE SPAN OF 33 FT., ONE OF 44 FT., AND ONE OF 122 FT.; CONCRETE PIERS.)



NEW ZEALAND MIDLAND RAILWAY.—STAIRCASE VIADUCT. (ONE SPAN OF 60 FT., TWO OF 192 FT.; PIER-HEAD SPAN, 36 FT.; BED OF STREAM TO RAIL-LEVEL, 237 FT.)