

1905.
NEW ZEALAND.

PUBLIC DOMAINS.

Laid before both Houses of the General Assembly by Command of His Excellency the Governor.

INDEX.

	Page		Page		Page
Ahaura	1	Dobson	6	Hyde	10
Akaroa	1	Domett	6	Inglewood	10
Albert Town	1	Dorie	32	Island Bay	11
Alexandra	1	Dunedin	6	Kaipoi	11
Alexandra (Pirongia)	32	Dunrobin	6	Kaikoura	11
Alford Forest	32	Dunsandel	6	Kaitangata	11
Alfredton	2	Duntroon	6	Kaitawa	11
Aorangi	2	Ealing	7	Kaponga	32
Apiti	2	Eastern Mahurangi	7	Karitane	11
Araroa	2	East Tamaki	7	Katikati	11
Aratapu	32	Eketahuna	7	Kauri	32
Arowhenua	2	Ellesmere	7	Kawakawa	11
Arrowtown	2	Elsthorpe	7	Kawatiri	32
Arundel	2	Epsom	32	Kelso	11
Ashburton	2	Epsom and Mount Eden	32	Khandallah	11
Ashhurst	2	Fairlie	7	Kihikihi	12
Ashley Gorge	2	Farndon Park	7	Kimberley	12
Auckland	3	Featherston	7	Kimbolton	12
Avondale	3	Fortrose	7	Kirwee	12
Awhitu	3	Frasertown	8	Knottingly Park	12
Balclutha	3	Gate Pa	8	Kongutu	12
Bastings	3	Geraldine	8	Kopuru	32
Berwick	3	Gisborne	8	Kopuru Town	32
Birkenhead	3	Glentunnel	8	Kowai	12
Britannia Heights	3	Gore	8	Kowai Pass	12
Buffalo	3	Governor's Bay	8	Kuaotunu	12
Buller	3	Grasmere	8	Kuirau	13
Bulls	3	Greendale	8	Kumeroa	13
Bunnythorpe	4	Green Island	8	Lake Ellesmere	13
Burke's Pass	4	Greenwich Square	8	Lauder	13
Cambridge	4	Grey Lynn	9	Leithfield	13
Cambridge West	4	Greytown	9	Levin	13
Carleton	4	Hamilton	9	Limehills	13
Cashmere Hills	4	Hampden Bush	9	Lincoln	13
Casnell Island	4	Happy Valley	9	Little River	13
Chertsey	4	Hastwell	9	Loburn	13
Christchurch	4	Havelock (Otago)	9	Lumsden	13
Clifton	4	Havelock	9	Lyttelton	14
Clinton	5	Hawea	9	Lyttelton and Heathcote	14
Clyde (Otago)	5	Hawksbury	9	Mackaytown	32
Clyde	5	Helensville	9	Mackenzie	32
Coalgate	5	Heriot	10	Maheno	14
Conway	5	Highbank	10	Mahurangi	14
Courtenay	5	Hinds	10	Makairo	14
Cromwell	5	Hinds No. 2	32	Makaka	32
Croydon Bush	5	Hirstfield	32	Makakahi Island	14
Cust	5	Hororata	10	Makaraka	14
Dannevirke	5	Howell's Point	10	Makarewa	14
Darfield	6	Howick	10	Makotuku	14
Denniston	6	Huirangi	10	Makuri	14
Devonport	6	Hunterville	10	Manaia	32
Dipton	6	Hurunui	10	Mangapiko	32

INDEX—*continued.*

	Page		Page		Page
Mangatainoka	14	Parnell	32	Tauranga	26
Mangaweka	15	Patea	21	Tauranga Racecourse	26
Mangere	15	Patutahi	21	Te Ana	26
Manuherikia	32	Patutahi Town	21	Te Aroha Hot Springs	27
Manutahi	15	Pelorus	21	Te Awamutu	27
Matamau	15	Picton	32	Templeton	27
Mataura	15	Piha	21	Temuka	27
Maungatua	15	Pihama	21	Te Ngutu o te Manu	27
Meanee	15	Pipiriki	21	Te Puke	27
Menzies Ferry	15	Pleasant Point	21	Timaru	27
Mercer	15	Pohangina	21	Timaru Racecourse	32
Methven	15	Pokeno	21	Tinwald	27
Millerton	15	Poukiore	21	Tokomairiro	27
Moa Flat and Etrick	16	Pongaroa	32	Tokonui	27
Moeraki	32	Port Robinson	21	Torere	32
Monkey Face	16	Prebbleton	21	Totara	28
Morven	16	Pukaki	32	Trotter's Creek	28
Motueka	16	Pukerau	22	Tuakau	28
Mount Bryon	16	Puketitiri	22	Tuapeka	28
Mount Eden	16	Punehu	22	Tupua	28
Mount Hobson	16	Pungarehu	22	Turakina	32
Mount Maunganui	16	Puniu	22	Turanga	28
Mount Richmond	16	Purangi	22	Tutaekara	28
Mount Roskill	16	Queen's Park	22	Uawa	28
Mount Smart	16	Raetihi	22	Urenui	28
Mount Somers	16	Rahotu	32	Uruti	28
Mount St. John	17	Rangataua	22	Utiku	32
Mount Wellington	17	Rangiora	22	Victoria (Woodville)	28
Mowhanau	17	Rangitoto Island	22	Waiau	28
Murchison	17	Rangiwahia	22	Waihemo	28
Naseby	17	Rawhiti	23	Waihi	29
Nelson	17	Record Reign	23	Waihora Park	29
New Brighton	17	Reefton	23	Waihou	29
Newman	17	Richmond	23	Wai-iti	29
Newmarket	17	Rimu	23	Waikaha	29
Ngaroto	17	Riverton	23	Waikiekie	29
Ngaruawahia	17	Roslyn	23	Waikuku	29
Ngatikoi	17	Ross	23	Waimate	32
Normanby	17	Rotokare (Paritutu)	23	Wainui	29
Norsewood	18	Rotokare (Ngairi)	23	Waione	29
Northcote	18	Ruapuna	23	Waiopahu	29
Nukumarū	18	Reserve No. 3139	23	Waipawa	29
Ocean Beach	18	„ 3145	24	Waipuku	29
Ohinewai	18	„ 3146	24	Wairoa	30
Ohoka and Eyreton	18	„ 3150	24	Waitakerei	30
Okotuku	18	„ 3157	24	Waitaki North	30
Omaka	18	„ 3158	24	Waitotara	30
Onehunga	18	Reserves Nos. 3148 and 3149	24	Waiuku	30
One-tree Hill	18	Sandy Point	24	Waiwera	30
Opaheke	18	Scarborough	24	Wakefield	30
Opawa	32	Scotsburn	24	Wanaka Islands	30
Opotiki	19	Seddon	24	Wangaloa	30
Opotiki and Waioeka	19	Sefton	24	Wanganui River Trust	30
Opunake	19	Sheffield	24	Warea	30
Orari Park	19	South Invercargill	25	Waverley	31
Ormond	19	South Malvern	25	Weber	31
Ormondville	19	South Rakaia	25	Weedon	31
Otahuhu	19	Spreydon and Halswell	25	West Melton	31
Otau	19	Springston	25	Westport	31
Otautau	19	St. Andrew's	25	Whaingaroa	31
Otokia	19	St. Bathans	25	Whakatane	31
Outram	19	Stratford	25	Whananaki	32
Owaka	20	Taieri Lake	25	Whangateau	31
Oxford	32	Taihape	25	Whetukura	31
Paeroa	20	Takahanga	25	Willsher	31
Pahautanui	20	Takapuna	26	Winchester	32
Pahi	20	Tane	26	Winchester Cricket and other	32
Pakuranga	20	Taneatua	26	Sports	32
Palmerston North	20	Tangihua	26	Winton	32
Palmerston	20	Tarata	26	Winton Town Belt	32
Panmure	20	Tauhoa	26	Woodbury	32
Papakura	20	Taumata	26	Woodend	32
Papanui	20	Taupiri	26	Woodville	32
Paremoremo	20	Taupo	26	Wyndham	32
Parkville	20				

PROCESS ILLUSTRATIONS.

	Facing page
Ashburton Domain : Sports Ground	2
Ashley Gorge Domain	2
Ashburton Domain : Coronation Entrance	2
South Ashley River, close to Ashley Gorge Domain	2
Cambridge Domain (four views)	4
Rotokare Domain (two views)	22
Stratford Domain (two views)	24

1905.
NEW ZEALAND.

PUBLIC DOMAINS.

Laid before both Houses of the General Assembly by Command of His Excellency the Governor.

The UNDER-SECRETARY FOR LANDS to the Hon. the MINISTER OF LANDS.

SIR,— Department of Lands and Survey, Wellington, 3rd August, 1905.

I have the honour to transmit herewith a synopsis of the annual reports of Domain Boards for the year ended the 31st December, 1904, which have been furnished in accordance with section 7 of "The Domain Boards Act, 1904."

Since the passing of the Act mentioned considerably increased interest in the administration of the public domains has been manifested by Chairmen, members, and Secretaries, and it is apparent that there is a general desire to comply not only with the letter but also with the spirit of the law relating to these important reserves, which are held for the benefit of the public at large.

In dealing with the reports it was discovered that many Boards were under the impression that they had power to lease the lands under their control without the consent of the Governor, and as a result of this misapprehension a number of leases are in existence which are invalid, through not having been issued by the Crown. However, as most of them are for short terms only, they may be allowed to expire by effluxion of time. A valid lease can be insisted on in any case where it is considered necessary.

A map of each Island, showing the locality of the public domains, is attached.

The total number of domains is 378, and reports regarding 344 have been received. Appended you will find a list of those for which no report has come to hand. Inquiries are being made to ascertain why the law is not being complied with in respect to these lands.

I have, &c.,

WM. C. KENSINGTON,

Under-Secretary for Crown Lands.

The Honourable Minister of Lands, Wellington.

AHAURA DOMAIN, WESTLAND LAND DISTRICT.

Sections Nos. 12, Block I., Ahaura Survey District, and 30, Block XIII., Mawheraiti Survey District. Area, 100 acres.

Improvements now on domain: Buildings, fences, and an area levelled and grassed. Used for races, and training trotting horses, also for picnics. Proposed operations for ensuing year: Ornamental-tree planting.

AKAROA DOMAIN, CANTERBURY LAND DISTRICT.

Reserves Nos. 88 and 1724, Akaroa Survey District, and Section No. 45, Town of Akaroa. Area, 10 acres 2 roods.

Work done during year: Pavilion erected, summer-house repaired and roofed with iron, and trees thinned where necessary. Improvements now on domain: Substantial fences, macrocarpa hedge, summer-house, pavilion, two bridges, five gates, large portion planted with exotic trees, fountain, and a number of garden-seats. Used for lawn-tennis, picnics, and general recreation. A caretaker is employed.

ALBERT TOWN DOMAIN, OTAGO LAND DISTRICT.

Section No. 5, Block IV., Lower Wanaka Survey District. Area, 81 acres.

This domain is under the control of the Commissioner of Crown Lands, Dunedin. No work has been undertaken.

ALEXANDRA DOMAIN, OTAGO LAND DISTRICT.

Sections Nos. 1 to 23, Block XI., and 1 to 22, Block XII., Town of Alexandra. Area 10 acres 2 roods 5 perches.

Work done during year: 150 trees planted. Improvements now on domain: Wire and netting fences, belt of poplar trees, and two small plantations. Used for sports, picnics, and general recreation. No revenue accrues from the domain. The improvements are done by voluntary subscription.

ALFREDTON DOMAIN, WELLINGTON LAND DISTRICT.

Section No. 201, Block XII., Mangaone Survey District. Area, 100 acres.

Ninety-nine acres leased on improvement conditions. Improvements now on domain: About 12 chains of box drain, shed and fixtures, boundary and subdivisional fences, 1 acre planted with trees and shrubs. Used for sports, picnics, and cricket. Proposed operations for ensuing year: Tree-planting and erection of more fences.

AORANGI DOMAIN, CANTERBURY LAND DISTRICT.

Part of Reserve No. 2652, Mueller Survey District. Area, 24,000 acres.

This domain is under the control of the Tourist Department. It is the Mount Cook Tourist Resort, and contains the Hermitage.

APITI DOMAIN, WELLINGTON LAND DISTRICT.

Section No. 41A, Block XI., Apiti Survey District. Area, 40 acres 2 roods.

Leased. Improvements now on domain: Ring-fence and grass. The Board is negotiating for the purchase of a piece of land half a mile from Apiti Township, to be used as a sports-ground.

ARAROA DOMAIN, HAWKE'S BAY LAND DISTRICT.

Section No. 33, Town of Te Araroa. Area, 15 acres 2 roods 24 perches.

Nine acres leased. Work done during year: Six acres cleared of manuka scrub and sown with grass. Improvements now on domain: Good boundary-fences, gate, 12 acres cleared of scrub, and about 4 acres well grassed. Used principally as a cricket-ground. Proposed operations for ensuing year: Planting ornamental trees, and formation of cricket-pitch.

AROWHENUA DOMAIN, CANTERBURY LAND DISTRICT.

Reserves Nos. 3003 to 3013, Town of Arowhenua. Area, 11 acres and 8 perches.

Leased to seventeen tenants. Work done during year: Taumatakahu Creek cleared of weeds. Not used by the public.

ARROWTOWN DOMAIN, OTAGO LAND DISTRICT.

Section No. 38, Block VII., Shotover Survey District. Area, 6 acres.

Improvements now on domain: Fences, shed, cricket-pitch, and circular rink. The area is in grass. Used for sports, foot-racing, cricket, and general recreation. Proposed operations for ensuing year: Erection of seats and gates, removal of dead trees and filling vacancies caused thereby, and improvement of ground by rolling.

ARUNDEL DOMAIN, CANTERBURY LAND DISTRICT.

Reserve No. 2965, Block III., Town of Arundel. Area, 4 acres 1 rood 6 perches.

Improvements now on domain: Good fences and plantation.

ASHBURTON DOMAIN, CANTERBURY LAND DISTRICT.

Area, 90 acres.

Work done during year: Propagating-house and tool-shed erected, new flower-beds laid out, maintenance, and general improvement. Improvements now on domain: About four miles fences, curator's lodge, propagating-houses, tool-shed, meteorological station, tennis-pavilion, and two small pavilions on sports-ground, bathing-sheds, asphalt cycling-track, three asphalt tennis-courts, croquet-green, bowling-ground, cricket-ground, water-supply, ornamental water-dams, &c. The domain is well planted and partially laid out as flower-gardens, walks, &c. Used for general recreation, sports, cricket, football, cycling, hockey, tennis, bowls, croquet, and swimming. Picnic parties from all over Canterbury visit the domain during the summer months; over five thousand excursionists visited the domain in January, 1905. Proposed operations for ensuing year: General maintenance and retarring asphalt cycling-track.

ASHHURST DOMAIN, WELLINGTON LAND DISTRICT.

Sections Nos. 463A and 463C, Block III., Gorge Survey District. Area, 46 acres 2 roods 11 perches.

Work done during year: Erection of fences. Improvements now on domain: 120 chains wire fences, four gates, and $\frac{1}{2}$ chain picket-fence. The area contains 25 acres of native bush, and is used for picnics and general recreation. Proposed operations for ensuing year: Tree-planting, extension of river protective works, and formation of cricket-pitch and cycle-track.

ASHLEY GORGE DOMAIN, CANTERBURY LAND DISTRICT.

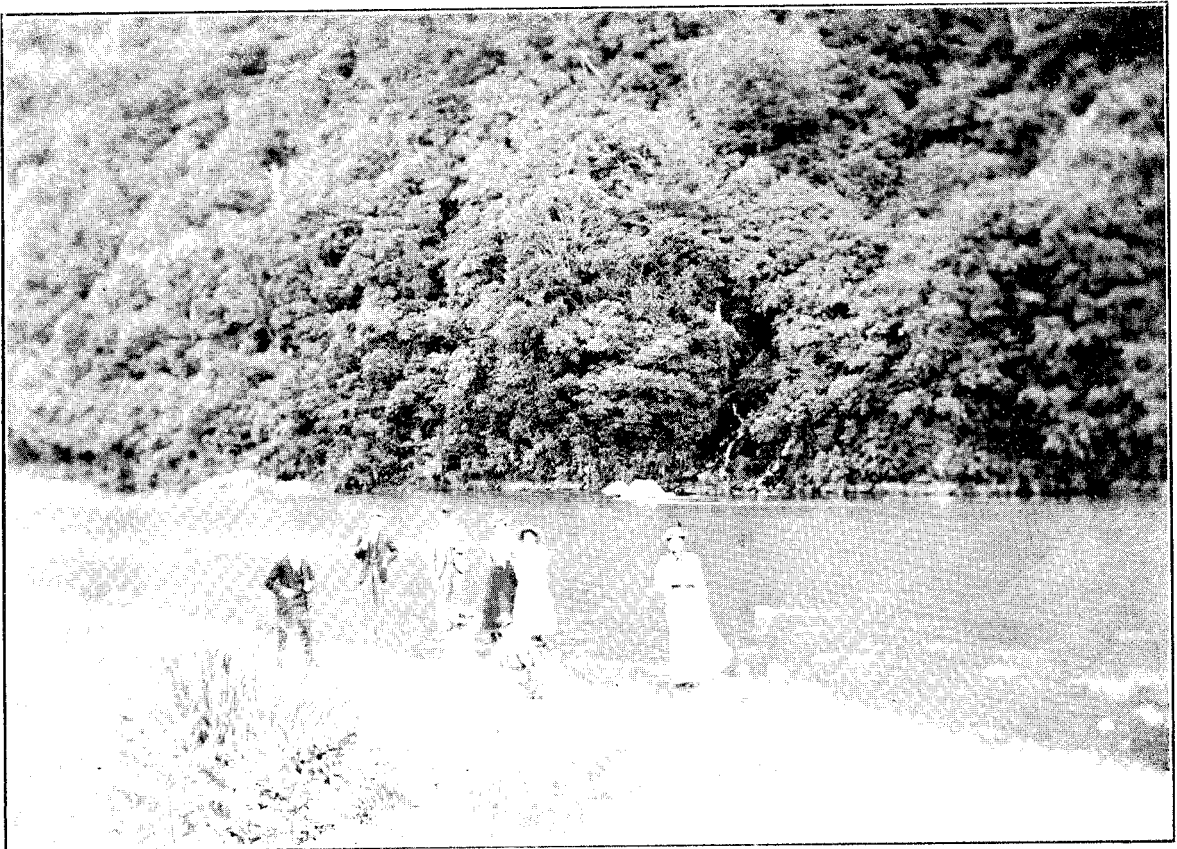
Reserves Nos. 3094, Block IV., Oxford Survey District, and 3231, Block XVI., Upper Ashley Survey District, XII., Mount Thomas Survey District, IV., Oxford Survey District, and I., Mairaki Survey District. Area, 74 acres.

Sixty-three acres leased. Work done during year: Road repaired. Improvements now on domain: Road and fences. Used principally for picnics.



Group photo.

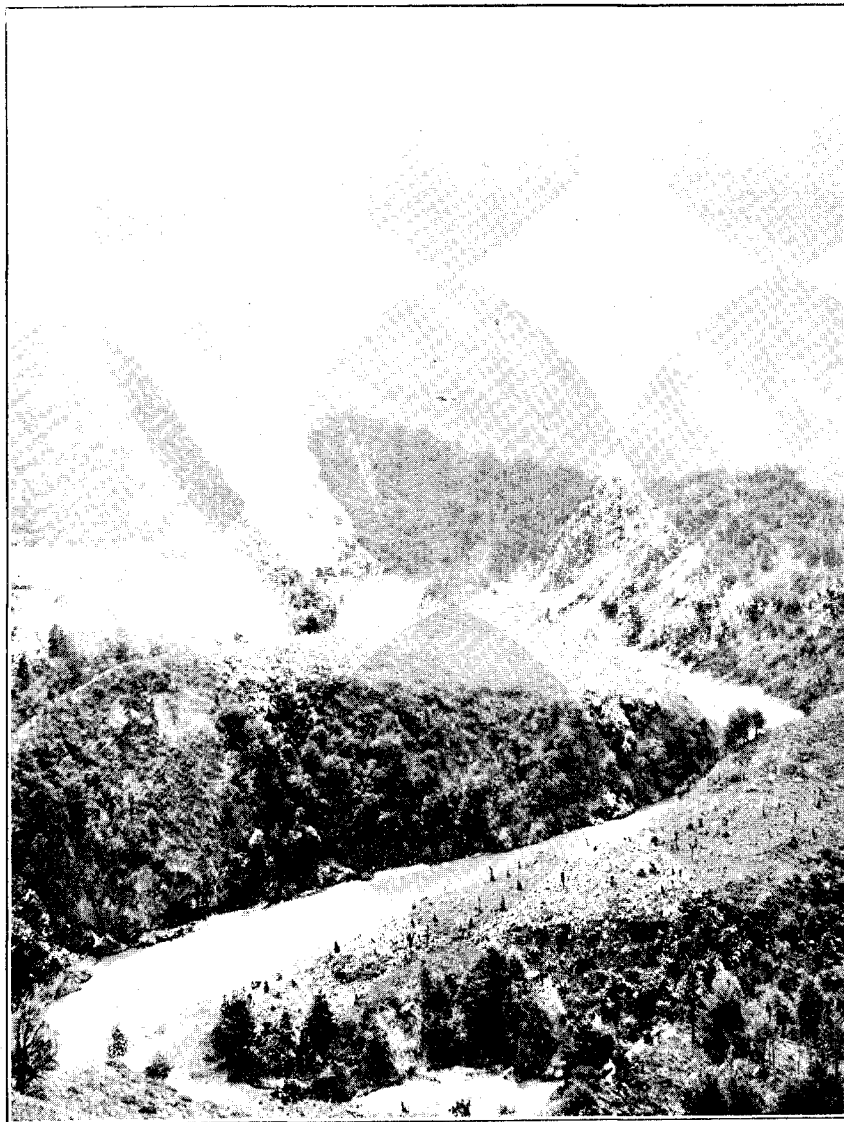
ASHBURY DOMAIN, CANTERBURY - SPORTS GROUND.



ASHLEY GORGE DOMAIN, SOUTH CANTERBURY.



ASHBURTON DOMAIN, CANTERBURY. CORONATION ENTRANCE.



SOUTH ASHLEY RIVER, CLOSE TO ASHLEY GORGE DOMAIN, CANTERBURY.

AUCKLAND DOMAIN, AUCKLAND LAND DISTRICT.

Situated in Rangitoto Survey District. Area, 236 acres 1 rood.

Seventy-seven acres leased. Work done during year: Portion of old gardens put in order, six hundred pine and poplar trees removed with a view to planting native and ornamental trees, drive and paths metalled. Improvements now on domain: All fenced, cricket-ground securely fenced from remainder of domain by iron fence and stone wall, pavilion in cricket-ground, Park Superintendent's house, gardener's house, and caretaker's lodge. The area contains extensive plantations. Used for picnic parties, cricket, athletic purposes, and general recreation.

AVONDALE DOMAIN, AUCKLAND LAND DISTRICT.

Section No. 361, Waikomiti Parish. Area, 38 acres 2 roods.

Work done during year: Road formed from Manukau Road to domain; also 6 chains of road formed within the area. Improvements now on domain: Fenced on three sides (the fourth side is bounded by the sea), 6 acres grassed, and boundary planted with *Pinus insignis*. The fences are out of repair. Used for general public recreation. Proposed operations for ensuing year: Repairs to fences.

AWHITU DOMAIN, AUCKLAND LAND DISTRICT.

Section No. 58c, Awhitu Parish. Area, 8 acres 3 roods 30 perches.

Nil report furnished.

BALCLUTHA DOMAIN, OTAGO LAND DISTRICT.

Reserve No. 5, Town of Balclutha. Area, 1 acre.

Improvements now on domain: Fences, bowling-green, and tennis-court. Used for recreation, bowling, and lawn-tennis.

BASTINGS DOMAIN, OTAGO LAND DISTRICT.

Sections Nos. 1, 2, 48, 49, and 50, Block I., Town of Bastings. Area, 1 acre 1 rood 14 perches.

No improvements effected. Domain Board only recently appointed. Proposed operations for ensuing year: Erection of fences.

BERWICK DOMAIN, OTAGO LAND DISTRICT.

Section No. 10, Block IX., Town of Berwick. Area, 4 acres.

Willows overhanging river were cut during year. Improvements now on domain: Fences, plantation, and embankments. Used for sports and picnics. It is proposed to raise the embankment during the ensuing year.

BIRKENHEAD DOMAIN, AUCKLAND LAND DISTRICT.

Section No. 122, Takapuna Parish. Area, 112 acres 2 roods.

Work done during year: Eradication of noxious weeds. Improvements now on domain: Fences and plantations. No improvements proposed for ensuing year on account of lack of funds.

BRITANNIA HEIGHTS DOMAIN, NELSON LAND DISTRICT.

Parts of Sections Nos. 1 and 4, Suburbs of Nelson. Area, 11 acres 2 roods 24 perches.

Improvements now on domain: Fences and plantations. Used for general recreation.

BUFFALO DOMAIN, AUCKLAND LAND DISTRICT.

Section No. 32, Village of Buffalo. Area, 17 acres 3 roods 14 perches.

Work done during year: Arrangements made for fencing and improving 10 acres—estimated cost, £70. The domain is used for sports, &c.

BULLER DOMAIN, NELSON LAND DISTRICT.

Section No. 35, Block IV., Kawatiri Survey District. Area, 200 acres.

Nineteen acres leased on improvement conditions. Work done during year: Seats repaired, 13 chains, footpaths graded and asphalted, band-rotunda erected, hedges trimmed, and weeds eradicated. Proposed operations for ensuing year: General maintenance. Improvements now on domain: Fenced with wire and quickthorn hedge, 20 chains pipe drains, 4 chains box drains, 5 chains open drains, 43 chains asphalt paths, 47 chains metalled paths, and band-rotunda. Used for a promenade and pleasure resort, also for general recreation.

BULL'S DOMAIN, WELLINGTON LAND DISTRICT.

Section No. 5, Block XI., Rangitoto Survey District. Area, 45 acres.

Work done during year: Erection of fences, pumps, and water-troughs, gorse-grubbing, and construction of cycle-track. Improvements now on domain: Double ring boundary-fences, 10 acres ploughed, levelled and sown in grass, belt of ornamental trees, pumps, and water-troughs. Used for football, cricket, rifle-shooting, athletic sports, and picnics.

BUNNYTHORPE DOMAIN, WELLINGTON LAND DISTRICT.

Sections Nos. 1501 to 1504, Block VII., Kairanga Survey District. Area, 44 acres 3 roods 23 perches.

The domain is leased for a term of twenty-one years; the lease expires on the 12th August, 1910.

BURKE'S PASS DOMAIN, CANTERBURY LAND DISTRICT.

Reserve No. 1595, Block VIII., Burke Survey District. Area, 45 acres and 3 perches.

Work done during year: Noxious weeds eradicated, fences and gates repaired. Improvements now on domain: Ring-fences, 2 acres fenced and planted with trees of various kinds. Used for picnics and general recreation; a portion is also used for grazing. Proposed operations for ensuing year: Further eradication of noxious weeds.

CAMBRIDGE DOMAIN, AUCKLAND LAND DISTRICT.

Sections Nos. 576, 359, 360, 361, 361A, 367, 581, 578, 579, 363, 363A, 364, 365, 366, 368, 370, Town of Cambridge East, and the Cambridge East Town Belt. Area 484 acres 1 rood 7 perches.

Work done during year: Maintenance. Improvements now on domain: Recreation-ground, bowling-green, tennis lawns, and 7 acres of borders, walks, and ornamental trees. Used for general recreation, including bowls and tennis.

CAMBRIDGE WEST DOMAIN, AUCKLAND LAND DISTRICT.

Cambridge West Town Belt. Area, 347 acres.

About 246 acres leased. Work done during year: Eleven acres ploughed and laid down in permanent pasture, 80 chains fronting main road planted with ornamental and other trees, trees planted in portion used for recreation, hedges trimmed, and fern, &c., cleared from the trees. Improvements now on domain: Eleven acres ploughed, levelled, and grassed; plantation all round portion used for recreation, plantation on road frontage, and lawn-tennis court. Twenty-three acres used for general recreation; other portions for grazing, &c.

CARLETON DOMAIN, CANTERBURY LAND DISTRICT.

Reserves Nos. 2808 and 2858, Block V., Mairaki Survey District. Area, 13 acres 3 roods.

Work done during year: Tree-planting, gorse-grubbing, and hedge-trimming. Improvements now on domain: Thirty chains fences, pavilion, cricket-pitch, and plantation. Used for sports, cricket, and tennis. Proposed operations for ensuing year: Erection of iron entrance-gate, and maintenance.

CASHMERE HILLS DOMAIN, CANTERBURY LAND DISTRICT.

Reserve No. 161, Halswell Survey District. Area, 188 acres 3 roods 11 perches.

One hundred and seventy-three acres leased; lessee to keep premises leased in good order, and supply visitors with refreshments at reasonable prices. Work done during year: Seven hundred trees planted, floor of pavilion cemented, and new entrance-gate to pavilion enclosure erected. Improvements now on domain: House, cow-shed, Victoria memorial, pavilion (brick), nursery, plantations, ring-fences, fences round plantations, house, and nursery.

CASNELL ISLAND DOMAIN, AUCKLAND LAND DISTRICT.

Section No. 196, Mahurangi Parish. Area, 16 acres 3 roods.

No improvements made. Used for camping and picnics.

CHERTSEY DOMAIN, CANTERBURY LAND DISTRICT.

Reserve No. 2376, Ashburton Survey District, and Reserve No. 3057, Town of Chertsey. Area, 32 acres 2 roods 27 perches.

Leased for grazing. Work done during year: Gorse and tussocks grubbed, 50 chains hedges trimmed, fifty trees planted, trotting-track formed, trees branched to form an avenue 40 chains in length. Improvements now on domain: Eighty chains fences, 10 acres plantation, 10 chains water-race, swimming-bath, dressing-room, trotting-track, and avenue. It is proposed to plough the land during the winter with a view to renewing the grass. Used for picnics, cricket, football, trotting-races, and general recreation.

CHRISTCHURCH DOMAIN, CANTERBURY LAND DISTRICT.

Parts of Reserves Nos. 24 and 25, Block XI., Christchurch Survey District. Area 495 acres.

Three hundred and seventy acres leased for sheep-grazing. Work done during year: Shade-house erected, wash-house for gardener's cottage built, bridges and gates repaired, trees thinned, trees planted, walks reformed and repaired, lawns renewed, flower-beds weeded and planted, trees planted, and general maintenance. Improvements now on domain: Magnetic observatory, museum, cottages for head gardener, ranger, and caretaker, hothouse, shade-house, two large bridges, several small bridges, fences, gates, lake, gardens, lawns, walks, exotic trees, avenues, and plantations. Used for acclimatisation purposes, cricket, croquet, polo, golf, football, hockey, picnics, model-yacht sailing, volunteer encampments and manoeuvres, and general recreation.

CLIFTON DOMAIN, TARANAKI LAND DISTRICT.

Section No. 71, Block VII., Waitara Survey District. Area, 66 acres.

This domain is under the control of the Commissioner of Crown Lands, New Plymouth. No improvements have been made. The domain contains some beautiful native bush and an ancient Maori pa, and is situated on the Onairo River.



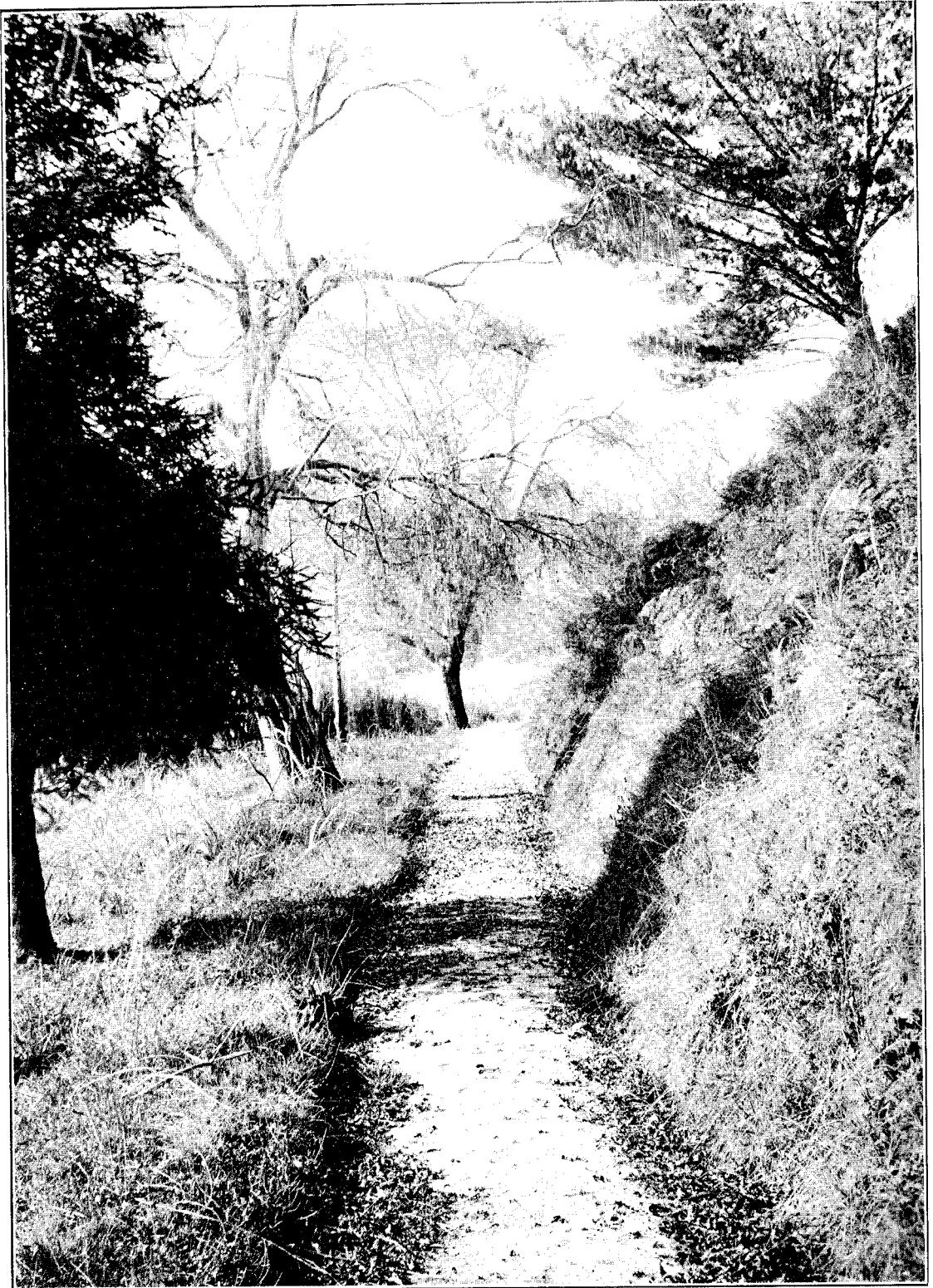
L. L. Brown, 1908

CAMP 100, DOMAIN, AUCKLAND.



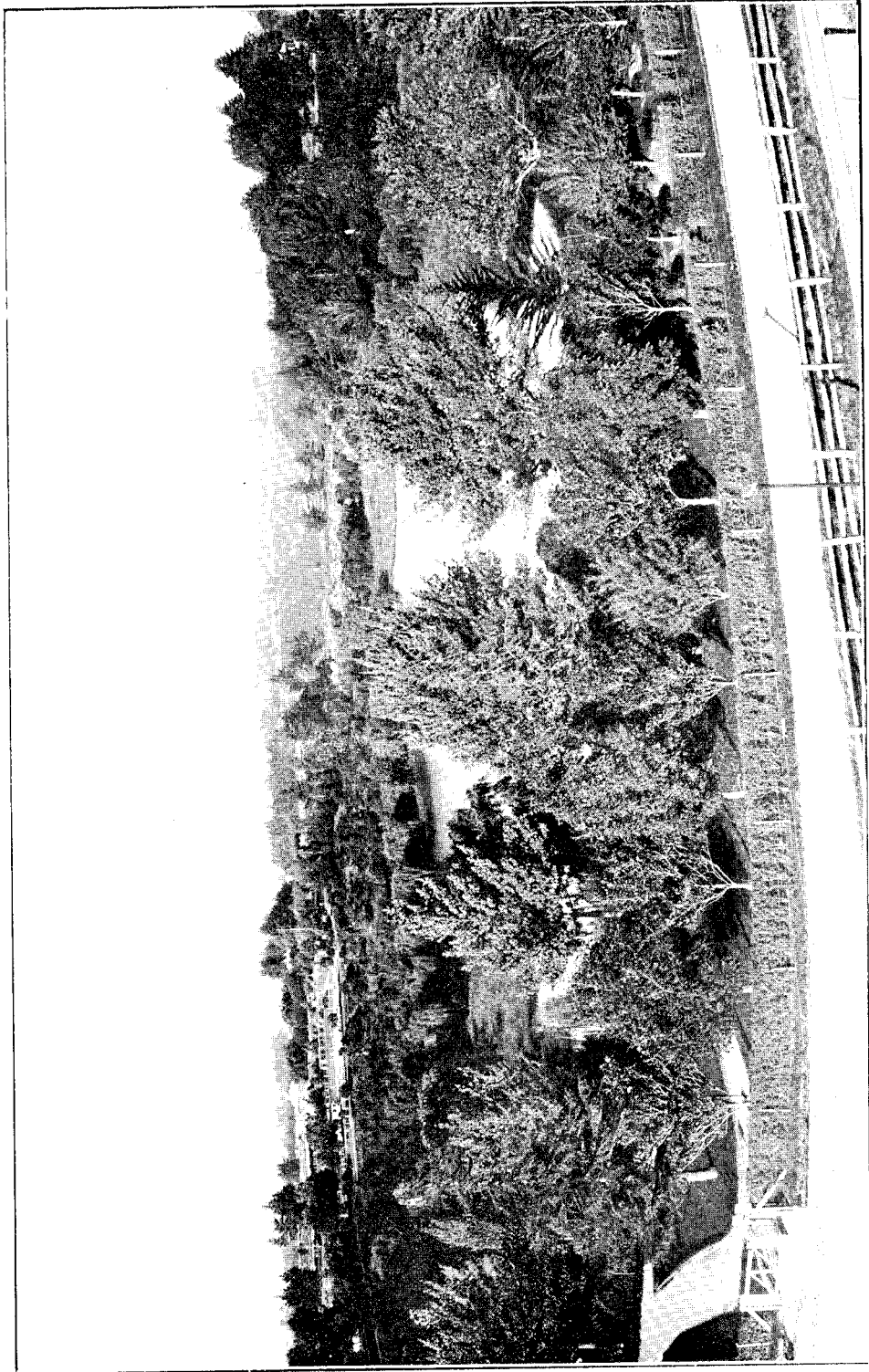
L. Isherwood, photo.

CAMBRIDGE DOMAIN, AUCKLAND.



L. Historical photo.

CAMBRIDGE DOMAIN, AUCKLAND.



L. Isherwood, photo.

CAMBRIDGE DOMAIN, AUCKLAND, FROM ENGLISH CHURCH TOWER

CLINTON DOMAIN (PART OF), OTAGO LAND DISTRICT.

Section No. 1, Block XXVI., Town of Clinton. Area, 18 acres and 36 perches.

This portion of Clinton Domain is administered by the Clinton Town Board as a Domain Board. Improvements now on domain: Fences, drains, plantation, and building which is used as a grandstand. Twelve acres is used for pasture, the remainder for sports, picnics, cricket, and football.

CLINTON DOMAIN (PART OF), OTAGO LAND DISTRICT.

Section No. 82, Block XI., Pomahaka Survey District. Area, 132 acres.

This portion of Clinton Domain is under the control of the Commissioner of Crown Lands, Dunedin, and is leased for grazing purposes.

CLYDE DOMAIN, HAWKE'S BAY LAND DISTRICT.

Suburban Sections Nos. 4, 5, 10, and 11, Town of Clyde. Area, 8 acres.

Work done during year: Erection of fences round plantation, and clearing rushes. Improvements now on domain: Fences, plantations, and band rotunda. Used for sports and football matches. Proposed operations for ensuing year: Further clearing of rushes, trimming hedges, and repairing and painting band rotunda.

CLYDE DOMAIN, OTAGO LAND DISTRICT.

Sections Nos. 38, 39, and 48, Block XI., and Blocks IV., V., VI., VII., LVI., and LVII., Town of Clyde. Area, 63 acres 3 roods 21.5 perches.

Improvements on domain: Fences. Used for general recreation. Proposed operations for ensuing year: Tree-planting.

COALGATE DOMAIN, CANTERBURY LAND DISTRICT.

Reserve No. 2409, Hororata Survey District. Area, 20 acres 1 rood.

Twenty-five acres leased. Improvements now on domain: Good fences and 3 acres of plantation. Portion used for grazing; remainder for tennis and football. Proposed operations for ensuing year: Hedge-trimming, and gorse-grubbing.

CONWAY DOMAIN, CANTERBURY LAND DISTRICT.

Section No. 46., Block XII., Hawkswood Survey District. Area, 10 acres.

Leased for grazing purposes. Not used by the public.

COURTENAY DOMAIN, CANTERBURY LAND DISTRICT.

Reserve No. 2413, Block VIII., Hawkins Survey District. Area, 20 acres.

No new works undertaken. Improvements now on domain: Sixty-eight chains hedges and 12 chains post-and-wire fences. Used for picnics. Proposed operations for ensuing year: Erection of new gate and stile, grass-seed sowing, tree-planting, and other improvements the nature of which has not yet been decided.

CROMWELL DOMAIN, OTAGO LAND DISTRICT.

Section No. 1, Block XV., Town of Cromwell and the Cromwell Town Belt. Area, 231 acres.

The greater portion of this area has for some years been covered with drift sand; large sums of money have been expended in tree-planting and erecting sand-barriers. This work was continued during the past year. Improvements now on domain: Two acres plantation, a mile and a half of sand-barriers, composed of wire and brush fences with live poplar posts and other trees; also half a mile of other fences. Used for cricket, football, and volunteer manoeuvres. Proposed operations for ensuing year: Tree-planting, and erection of more sand-barriers.

CROYDON BUSH DOMAIN, SOUTHLAND LAND DISTRICT.

Section No. 819, Hokonui Survey District. Area, 319 acres 2 roods.

Used chiefly for picnics. Most of the area is in native bush.

CUST DOMAIN, CANTERBURY LAND DISTRICT.

Reserves Nos. 2422 and 2423, Mairaki Survey District. Area, 17 acres 3 roods 33 perches.

No works undertaken during year. Improvements now on domain: Surrounded by gorse hedge and a plantation (1 chain wide) of well-grown trees, cricket-pitch, pavilion, seating-accommodation, and well. Proposed operations for ensuing year: Gorse-grubbing. Used for horse-races, cricket, football, picnics, and sports.

DANNEVIRKE DOMAIN, WELLINGTON LAND DISTRICT.

Suburban Section No. 12, Town of Dannevirke. Area, 40 acres.

During the year the grandstand was improved, and repairs effected to cycle-track, fences, and plantation. Improvements now on domain: Fences, plantations, pavilion, cycle-track, and dressing-room. Used for sports, cycle-races, football, and cricket. Proposed operations for ensuing year: Erection of urinals and conveniences.

DARFIELD DOMAIN, CANTERBURY LAND DISTRICT.

Reserve No. 2635, Hawkins Survey District. Area, 10 acres.

Work done during year: Hedges cut, bank repaired, and trotting-track made. Improvements now on domain: Fences of sod bank, gorse, and wire, surrounded with belt of trees, two lawn-tennis courts, and building used by tennis-players. Used for lawn-tennis, and also as track for trotting-horses.

DENNISTON DOMAIN, NELSON LAND DISTRICT.

Section No. 5, Block VI., Kawatiri Survey District. Area, 6 acres.

Work done during year: Draining and levelling. Used for sports and picnics. Proposed operations for ensuing year: Further draining and levelling.

DEVONPORT DOMAIN, AUCKLAND LAND DISTRICT.

Allotments Nos. 36, 37, and 39 of Section No. 2, and Mount Victoria Reserve, Takapuna Parish. Area, 41 acres 2 roods 36 perches.

Work done during year: Cricket-ground, football-ground, tennis-lawns, and bowling-green top-dressed and rolled, and fences renewed on Mount Victoria Reserve. Improvements now on domain: Pavilions, drains, sanitary arrangements, and plantations on boundaries. Used for cricket, bowls, football, tennis, and croquet. Mount Victoria Reserve is leased for grazing purposes.

DIPTON DOMAIN, SOUTHLAND LAND DISTRICT.

Section No. 3, Block X., Town of Dipton. Area, 5 acres.

Improvements now on domain: Good fences, half of boundary planted with *Pinus insignis*; shelter-shed, and concrete well. The whole area is in grass, and looking well. Used for athletic sports, cricket, football, and general recreation.

DOBSON DOMAIN, WESTLAND LAND DISTRICT.

Reserves Nos. 258 and 290, Town of Dobson. Area, 8 acres 2 roods.

No new works undertaken. The domain has been cleared and drained, and is used for football and cricket. The surrounding district is thinly populated, and a neighbouring recreation reserve is used more than the domain.

DOMETT DOMAIN, CANTERBURY LAND DISTRICT.

Reserves Nos. 3177, Block XIX., and 3241, Block XVI., Lowry Peaks Survey District. Area, 20 acres and 38 perches.

Two rows of trees were planted along the frontage and fenced off during the year. Improvements now on domain: Fences and plantation. It is proposed to plant and fence off two rows of trees along the south boundary during the coming year.

DUNEDIN DOMAIN, OTAGO LAND DISTRICT.

Part of Dunedin Town Belt. Area, 52 acres and 6 perches.

Work done during year: New entrance made; new path, 4 chains long, with flower-borders on each side, constructed; nursery trenched, laid out, and planted; two propagating-houses, each 50 ft. long and 12 ft. wide, erected; two rows of frames and sashes constructed, each 50 ft. by 6 ft.; potting-shed, 20 ft. by 20 ft., erected; old road dug up, a ditch covered in, and a considerable amount of levelling and draining done to form a football-ground. Improvements now on domain: Propagating-houses, plant-frames, fernery, tool-shed, potting-shed, summer-house, band-rotunda, watchman's house, superintendent's house, 60 chains fences, aviary, and netting-fence round ponds to keep in water-fowl and deer. Used for band concerts, football, cricket, picnics, and botanic gardens. The principal part of the domain is the garden, which is gradually being made more interesting by the introduction of collections of native and exotic plants. Proposed operations for ensuing year: Erection of fences, eradication of broom and elderberry, repairs to paths and bridges, erection of new entrance-gates, and formation of new flower-beds and borders. A start has been made to label all the trees and shrubs with metal labels, having on them, in raised letters, the natural order, botanical name, common name, and habitat of the plant. The idea is to make the garden, as far as possible, of educational value.

DUNROBIN DOMAIN, OTAGO LAND DISTRICT.

Section 31, Block VIII., Crookston Survey District. Area, 12 acres.

Leased on improvement conditions; lease has still two years to run.

DUNSANDEL DOMAIN, CANTERBURY LAND DISTRICT.

Reserve No. 316, Block VIII., Selwyn Survey District. Area, 10 acres.

Work done during year: Erection of seats. Improvements now on domain: Pavilion, fences, gates, plantation, and cottage. Used for cricket, football, bowls, tennis, and other sports.

DUNTROON DOMAIN, OTAGO LAND DISTRICT.

Section No. 23, Block IV., Maruenua Survey District. Area, 80 acres.

The only work undertaken during the year was the keeping down of rabbits. The domain is used chiefly for grazing.

EALING DOMAIN, CANTERBURY LAND DISTRICT.

Reserve No. 3112, Rangitata Survey District. Area, 10 acres.

Three thousand young trees planted during year. The domain is now fenced and well planted. It is not used by the public.

EASTERN MAHURANGI DOMAIN, AUCKLAND LAND DISTRICT.

Section No. 176, Parish of Mahurangi. Area, 108 acres and 15 perches.

Nil report furnished.

EAST TAMAKI DOMAIN, AUCKLAND LAND DISTRICT.

Sections Nos. 140 and 40, Pakuranga Parish. Area, 18 acres 1 rood 35 perches.

Work done during year: Eradication of noxious weeds. Improvements now on domain: Fences, plantations, and dam. Used for picnics. Proposed operations for ensuing year: Repairs to dam, and erection of stone wall round a portion of the domain, and planting the area so enclosed with trees and shrubs.

EKETAHUNA DOMAIN, WELLINGTON LAND DISTRICT.

Section No. 40D, Block VI., Mangaone Survey District. Area, 5 acres 3 roods 19 perches.

Leased for grazing purposes. No works undertaken during year. The area is fenced. It is proposed during the ensuing year to clear, plough, and plant a sufficient area for a sports-ground.

ELLESMERE DOMAIN, CANTERBURY LAND DISTRICT.

Reserve No. 1630, Ellesmere Survey District. Area, 213 acres.

Leased for grazing purposes. Work done during year: Portion of area ploughed, harrowed, drilled, and rolled for sowing gum-seeds; tree-planting, hedge-trimming, gorse-stubbing, and repairs to fences. Improvements now on domain: Surrounded by plantation; fences, shed, grandstand and enclosure, windmill, and pump. Used for races, sports, and Volunteer encampments. Proposed operations for ensuing year: Extension of grandstand, and painting buildings, gates, and picket fences.

ELSTHORPE DOMAIN, HAWKE'S BAY LAND DISTRICT.

Section No. 36, Block VII., Oero Survey District. Area, 13 acres 2 roods.

Leased for grazing. A portion of the area was laid down in grass during the year. Improvements now on domain: Fences and plantation. Used for athletic sports. Proposed operations for ensuing year: Formation of running-track, tree-planting, and general improvement.

FAIRLIE DOMAIN, CANTERBURY LAND DISTRICT.

Reserve No. 2755, Tengawai Survey District. Area, 29 acres 2 roods.

Twenty-five acres leased. Further protective works (willow) were made during year to prevent encroachment of Opihi River, the work already done being satisfactory. Fences were repaired and gorse grubbed. Improvements now on domain: Ninety-five chains fences, 21 chains protective works (willow), swimming-pond, and plantation. Used for general recreation purposes. It is proposed to proceed with protective works during the ensuing year.

FARNDON PARK DOMAIN, HAWKE'S BAY LAND DISTRICT.

Portion of Wakahu Block, Clive Survey District. Area, 20 acres.

Work done during year: Erection of new fences and conveniences. Improvements now on domain: Plantations, fences, and conveniences. Used for picnics, cadet drill and exercise, and camping. Proposed operations for the ensuing year: erection of additional fences and trimming plantation.

FEATHERSTON DOMAIN, WELLINGTON LAND DISTRICT.

Section No. 338, Parts of Sections Nos. 152, 116, 123, and Suburban Section No. 122, Town of Featherston and the Featherston Town Reserve. Area, 88 acres and 5 perches.

Leased. Improvements now on domain: Shed and tables, band rotunda, seats, fences, and plantation. Used for general recreation purposes. Proposed operations for ensuing year: Repairs to fences, and painting gates, seats, and buildings.

FORTROSE DOMAIN, SOUTHLAND LAND DISTRICT.

Section No. 42, Block IV., Town of Fortrose. Area, 10 acres.

Seven acres leased. Work done during year: Erection of dressing-room. Improvements now on domain: Live fence all round, 3 acres plantation also fenced in, with paths through it. Proposed operations for ensuing year: Erection of shelter-shed.

FRASERTOWN DOMAIN, HAWKE'S BAY LAND DISTRICT.

Section No. 152, Town of Frasertown. Area, 31 acres 2 roods 14 perches.

Twenty-two acres leased on improvement conditions. Work done during year: Erection of new entrance-gates, tree-planting on boundary, and erection of fences. Improvements now on domain: Ring and subdivisional fences, grandstand and conveniences. Used for cricket, tennis, sports, and agricultural shows. Proposed operations for ensuing year: Subsoil-ploughing and grass-seed sowing.

GATE PA DOMAIN, AUCKLAND LAND DISTRICT.

Section No. 13, Suburbs of Tauranga. Area, 6 acres and 31 perches.

Leased on improvement conditions. East and old Church paddocks are well fenced, but the larger paddock is as yet only partly fenced. This fence will be completed during the coming year. The domain is not used by the public.

GERALDINE DOMAIN, CANTERBURY LAND DISTRICT.

Reserves Nos 305, 306, and 1624, Town of Geraldine. Area, 37 acres and 13 perches.

Forty-one acres leased. Work done during year: General maintenance. Improvements now on domain: Fences, iron gates, pavilion, swimming-baths, plantations, and flower-bed. Used for cricket, football, tennis, and picnics. Proposed operations for ensuing year: Repairs to fences and eradication of noxious weeds.

GISBORNE DOMAIN, HAWKE'S BAY LAND DISTRICT.

Section No. 218, Town of Gisborne. Area, 7 acres 1 rood 22 perches.

Leased. Grass was top-dressed and resown during the year. Domain is now levelled, fenced, sown in grass, and enclosed with trees and a hedge. A band-practice room and dressing-shed are erected on the ground. Used for all kinds of sport, especially football and cricket.

GLENTUNNEL DOMAIN, CANTERBURY LAND DISTRICT.

Reserve No. 2407, Hororata Survey District. Area, 100 acres.

Work done during year: Erection of new fences and gates. Used for sports, cricket, and football.

GORE DOMAIN, SOUTHLAND LAND DISTRICT.

Area, 92 acres 3 roods 32 perches.

Work done during year: Tree-planting and general improvements. Improvements now on domain: Fences, plantations, bowling-green, and tennis-court. Used for games and picnics. It is proposed to formulate a general scheme of improving the domain.

GOVERNOR'S BAY DOMAIN, CANTERBURY LAND DISTRICT.

Reserve No. 3060, Block VII., Halswell Survey District. Area, 6 acres 2 roods 3 perches.

Work done during year: Outbuildings reroofed with iron. Improvements now on domain: Public hall, dwellinghouse, stables, harness-room and store-room, plantation, and 30 chains fences. Used for picnics, sports, &c.; public hall for meetings and entertainments. During the coming year it is proposed to erect a new entrance-gate, paint buildings, and bring in a water-supply.

GRASSMERE DOMAIN, SOUTHLAND LAND DISTRICT.

Section No. 158, Block XV., Invercargill Survey District. Area, 53 acres 3 roods 22 perches.

Nothing has been done on the domain. Improvement depends largely on a scheme for improving Waihopai Estuary, for which Legislative authority has been obtained.

GREENDALE DOMAIN, CANTERBURY LAND DISTRICT.

Reserve No. 1565, Hawkins Survey District. Area, 8 acres.

Not used by the public at present. A cricket-pitch is in course of construction.

GREEN ISLAND DOMAIN, OTAGO LAND DISTRICT.

Section No. 1, Block XIV., East Taieri Survey District. Area, 372 acres 3 roods 4 perches.

Leased. Work done during year: About 3 acres planted with marram-grass; lupin-seed has also been sown, and 30 chains of new fences erected. Proposed operations for ensuing year: Further planting of marram-grass and lupin-seeds, and erection of gate. The domain consists mostly of sandhills.

GREENWICH SQUARE DOMAIN, OTAGO LAND DISTRICT.

Section No. 18, Block VI., Town of Waihola. Area, 1 acre 1 rood 11 perches.

During the year the domain has been securely fenced, three gates erected, an approach from the Main Road formed, and noxious weeds eradicated. Improvements now on domain: Fences,

three gates, and entrance. Used for general recreation. Proposed operations for ensuing year: Trenching and planting trees and hedges.

GREY LYNN DOMAIN, AUCKLAND LAND DISTRICT.

Allotment No. 21 of Section No. 9, Suburbs of Auckland. Area, 22 acres.
Nil report furnished.

GREYTOWN DOMAIN, OTAGO LAND DISTRICT.

Block XIII., Town of Allanton (Greytown). Area, 7 acres and 33 perches.
Leased on improvement conditions. Improvements now on domain: Fences and plantations.

HAMILTON DOMAIN, AUCKLAND LAND DISTRICT.

Section No. 372, Te Rapa Parish, and portions of the Town Belts of Hamilton East and Hamilton West. Area, 489 acres 2 roods 24 perches.

Three hundred and thirty-one acres leased on improvement conditions. Work done during year: Ploughing, repairs to fences, and eradication of noxious weeds. Improvements now on domain: Pavilion and stand, cricket-ground (Sydney Square), grassing, fences, plantations, lake, and pathways. Used for cricket, football, sports, and picnics. Proposed operations for ensuing year: Ploughing and grassing, eradication of noxious weeds, and erection of new entrance-gate.

HAMPDEN BUSH DOMAIN, HAWKE'S BAY LAND DISTRICT.

Sections Nos. 36 and 2 of 37, Block XII., Maraekakaho Survey District. Area, 105 acres 3 roods 28 perches.

Work done during year: Portion of boundary-fence erected and other parts repaired. Improvements now on domain: Fences and plantation. Used for grazing stock. Proposed operations for ensuing year: Erection of fences and tree-planting.

HAPPY VALLEY DOMAIN, SOUTHLAND LAND DISTRICT.

Section No. 7, Block III., Waikaia Survey District. Area, 55 acres 2 roods.

Improvements now on domain: Fifty-five chains fences and two gates. Used for football, cricket, picnics, sports, and horse-racing.

HASTWELL DOMAIN, WELLINGTON LAND DISTRICT.

Section No. 64, Block XIV., Mangaone Survey District. Area, 12 acres 1 rood 24 perches.

Leased on improvement conditions. Improvements now on domain: Fences and grass. It is proposed to stump and plough 4 acres during the coming year.

HAVELOCK (WAITAHUNA) DOMAIN, OTAGO LAND DISTRICT.

Section No. 21, Block XXXII., Town of Havelock. Area, 5 acres 1 rood 32 perches.

Work done during year: New gate erected, fences repaired, and some gorse grubbed. Improvements now on domain: Boundary-fences and belt of macrocarpa trees. Used for cricket, football, tennis, and general recreation.

HAVELOCK DOMAIN, HAWKE'S BAY LAND DISTRICT.

Section No. 77, Block IV., Te Mata Survey District. Area, 4 acres 3 roods 10 perches.

Improvements now on domain: Boundary and subdivisional fences, and plantation. Used for football, cricket, picnics, and playground for school-children. Proposed operations for ensuing year: Repairs to fences and gates.

HAWEA DOMAIN, OTAGO LAND DISTRICT.

Section No. 19, Block IV., Lower Hawea Survey District. Area, 107 acres 1 rood 8 perches.

Work done during year: Booth erected, bicycle-track formed and chipped, and formation of racecourse commenced. Improvements now on domain: Ring-fence, plantation, bicycle-track, and booth. Used for picnics, sports, and races. Proposed operations for ensuing year: Formation of racing-track and erection of fences.

HAWKSBURY DOMAIN, OTAGO LAND DISTRICT.

Area, 459 acres 1 rood 36 perches.

One hundred and fifty-eight acres leased. Work done during year: Erection of fences and gates, grubbing, hedge-trimming, repairs to embankment, improvements to recreation-ground, shelter-shed removed to central position, repaired, painted, and verandah added. Improvements now on domain: Canal and connecting drains, fences, plantations, embankments, lake, bridges, pavilion, &c. Used for sports, picnics, and races. Proposed operations for ensuing year: Further improvements to recreation-ground, and tree-planting. The greatest difficulty the Board has to contend with is the keeping-open of the mouth of the lagoon; the occasional heavy seas bank up the sand and wash into the domain, sometimes flooding the same and destroying the grass.

HELENSVILLE DOMAIN, AUCKLAND LAND DISTRICT.

Section No. 10, Block XIV., Kaipara Survey District. Area, 38 acres 2 roods 21 perches.

During the year a caretaker was appointed at a salary of 10s. per week and 50 per cent. of the balance of the takings. The domain contains hot springs, but little has been done towards improving or developing them.

HERIOT DOMAIN, OTAGO LAND DISTRICT.

Section No. 2, Block I., Town of Heriot. Area, 9 acres 3 roods 9 perches.

A shelter-shed for spectators was erected during the year. Improvements now on domain: Good fences, plantations on two sides, and shelter-shed. Used for football, cricket, and sports.

HIGHBANK DOMAIN, CANTERBURY LAND DISTRICT.

Reserve No. 3198, Block II., Corwar Survey District. Area, 10 acres.

Improvements now on domain: Fences (out of repair) and plantations.

HINDS DOMAIN, CANTERBURY LAND DISTRICT.

Reserve No. 2281, Block III., Hinds Survey District. Area, 22 acres 2 roods 7 perches.

Nil report furnished.

HORORATA DOMAIN, CANTERBURY LAND DISTRICT.

Reserves Nos. 1589 and 2217, Hororata Survey District. Area, 227 acres.

One hundred and ninety-six acres leased. Work done during year: Eradication of gorse, hedge-trimming, thinning plantation, and planting trees where others have failed. Improvements now on domain: Two hundred and forty chains wire fences, 60 chains gorse hedges, grandstand and committee rooms, judge's box, stables, saddling-paddock, racecourse, cycle-track, cricket-ground, plantations (about 30 acres), about 40 chains footpaths, 60 chains water-race, and 130 acres laid down in grass. Used for sports, picnics, races, and general public recreation.

HOWELL'S POINT DOMAIN, SOUTHLAND LAND DISTRICT.

Sections Nos. 22, 23, 24, 25, 26, 27, and 28, Block II., and 46, 47, and 48, Block I., Jacob's River Hundred. Area, 70 acres.

Work done during year: Strong bar-gate and 39 chains fences erected. Improvements now on domain: Fences and gate. Used for picnics.

HOWICK DOMAIN, AUCKLAND LAND DISTRICT.

Suburban Sections No. 141 to 148, Town of Howick. Area, 8 acres.

Work done during year: Hedges trimmed, noxious weeds eradicated, and boundary-road stumped and cleared. Improvements now on domain: Thirty-six chains fences, 60 chains drains, a canal, about a hundred trees, shelter-shed, and tennis-court. Used for sports and picnics. It is proposed during the ensuing year to deepen and clean the canal, which runs through the middle of the domain. At present 4 acres is almost useless if the season is wet.

HUIRANGI DOMAIN, TARANAKI LAND DISTRICT.

Sections Nos. 138 to 142, 152 to 156, and 166 to 175, Town of Huirangi. Area, 10 acres.

Leased on improvement conditions. Improvements now on domain: Fences, plantations, clearing and grassing, and Institute. The Institute-site is also fenced and grassed.

HUNTERVILLE DOMAIN, WELLINGTON LAND DISTRICT.

Sections Nos. 17, 18, 25, 26, 33, and 54, Town of Hunterville, and 35, Block XV., Tiriraukawa Survey District. Area, 27 acres and 12 perches.

Work done during year: Four acres and a half stumped, levelled, drained, and grassed, bicycle-track made, fences repaired, trees trimmed, and a number of trees planted. Improvements now on domain: All fenced and subdivided, plantation of 1½ acres, tennis-court, pavilion and conveniences. An area of 2 acres was bought as an addition to the domain. Used for sports, football, cricket, golf, and tennis. Proposed operations for ensuing year: Erection of 3 or 4 chains fences, repairs to cycling-track, tree-planting, and erection of band-rotunda.

HURUNUI DOMAIN, CANTERBURY LAND DISTRICT.

Reserve No. 2598, Waipara and Waikari Survey District. Area, 85 acres 2 roods.

Leased on improvement conditions. Work done during year: Twenty-one chains of fences erected and tree-planting (338 trees); the area has had second ploughing. Improvements now on domain: Seventy-one chains plantation, consisting of two rows of pine-trees; 215 chains fences; half-chain race-track, one mile and a quarter with straight railed off; saddling-paddock; horse-yards; concrete water-trough; pump, and well. Used for racing. Proposed operations for ensuing year: Further tree-planting and erection of fences.

HYDE DOMAIN, OTAGO LAND DISTRICT.

Sections Nos. 51, 52, 54, 55, 57, and 58, Block VII., Rock and Pillar Survey District. Area, 79 acres 2 roods 29 perches.

Securely fenced, and used as a racecourse and rifle-range.

INGLEWOOD DOMAIN, TARANAKI LAND DISTRICT.

Sections Nos. 73, 85, 135, 148, 162, 175, 185, 197, 204, 213, 224, 228, and 230, Town of Inglewood. Area, 3 acres 1 rood.

Improvements now on domain: Fencing and grassing only. Not used by the public.

ISLAND BAY DOMAIN, WELLINGTON LAND DISTRICT.

An irregularly shaped island situated in Block XI., Port Nicholson Survey District. Area, 8 acres.

This domain consists of a rocky island situated in Island Bay. No improvements have been effected.

KAIAPOI DOMAIN, CANTERBURY LAND DISTRICT:

Reserves Nos. 74 and 3658, Blocks XV. and XVI., Rangiora Survey District. Area, 137 acres and 32 perches.

Work done during year: A thousand forest-trees planted, 2 acres prepared for grass lawns, fences repaired, flower-beds and walks cleaned, and 16 chains of embankment erected to keep back the overflow from the Waimakariri River. Fifty pine-trees were removed from the plantation. Improvements now on domain: All fenced, gates erected on all sides, plantation, walks, flower-beds, large ponds stocked with water-fowl and fish, artesian water-supply, shed, copper boiler, and two retiring-rooms. Used for picnics and general recreation.

KAIKOURA DOMAIN, MARLBOROUGH LAND DISTRICT.

Section No. 2 of 267, Suburbs of Kaikoura, and Sections Nos. 2, 346, and 349, Block X., Mount Fyffe Survey District. Area, 81 acres 2 roods 18 perches.

Eighty acres leased for grazing purposes. An effort to obtain a water-supply by means of a pump was unsuccessful. Improvements now on domain: Two buildings, latrines, plantation of pine-trees, and fences. Used for athletic sports and horse-racing. It is proposed to close the road through the domain owing to it crossing the only piece of level ground suitable for sports. The new line of road will be laid off along the seaward side of the domain.

KAITANGATA DOMAIN, OTAGO LAND DISTRICT.

Sections Nos. 1 to 15, Block XXVI., and 5, Block XLVI., Town of Kaitangata. Area, 68 acres 1 rood 38 perches.

During the year the portion of the domain used for recreation purposes was levelled and drained, 3 acres has been levelled, and the centre filled in to make an area suitable for athletic sports. Improvements now on domain: Fences, hedges, gates, drains, plantations, lawns, and walks. Used for general public recreation, football, cricket, and Caledonian sports.

KAITAWA DOMAIN, WELLINGTON LAND DISTRICT.

Suburban Section No. 13, Town of Kaitawa. Area, 15 acres and 36 perches.

Leased on improvement conditions. Work done during year: Construction of drains. Improvements now on domain: Fifty-nine chains fences, 6 chains drains, 2½ acres laid down in grass, and half-acre plantation. Used for picnics. Proposed operations for ensuing year: Completion of drains, completion of fences around plantation, further tree-planting, and stumping and ploughing 1 acre.

KARITANE DOMAIN, OTAGO LAND DISTRICT.

Section No. 2, Block XXIV., Town of Waikouaiti. Area, 16 acres 2 roods.

Work done during year: Small plantation formed, marram-grass planted, and protective works extended to prevent inroads by the sea. Improvements now on domain: Five plantations securely fenced with rabbit-proof fences, sand-breaks, protective works, and extensive plantation of marram-grass. Used for picnics and general public recreation. Proposed operations for ensuing year: Marram-grass planting, erection of further protective works, and improvements to Waikouaiti River by removal of rocks, and formation of retaining-wall.

KATIKATI DOMAIN, AUCKLAND LAND DISTRICT.

Sections Nos. 25 and 26, Katikati Parish. Area, 185 acres 2 roods.

Ten acres leased. Used for picnics, camping, and regattas. It is also frequented by fishing-parties.

KAWAKAWA DOMAIN, AUCKLAND LAND DISTRICT.

Section No. 47, Ruapekapeka Parish. Area, 14 acres 3 roods.

Leased on improvement conditions. Work during year: Six acres sown in grass, and noxious weeds eradicated. Improvements now on domain: Fences, plantation, and grassing. Used for grazing and for sports when required. Proposed operations for ensuing year: Further grassing, and eradication of noxious weeds.

KELSO DOMAIN, OTAGO LAND DISTRICT.

Sections Nos. 13 to 17, Block III., Town of Kelso. Area, 11 acres 2 roods 15 perches.

Four acres leased on improvement conditions. Used for sports and picnics. The domain is partly fenced and planted with trees.

KHANDALLAH DOMAIN, WELLINGTON LAND DISTRICT.

Allotments 2 and 3 of Sections Nos. 1 and 2, Block XI., Belmont Survey District. Area, 31 acres 1 rood.

Work done during year: A path 30 chains in length from eastern entrance to the top of principal ridge was graded and cut. Improvements now on domain: Forty chains of post-and-

wire fences, iron gate, and 60 chains footpaths. Used for picnics and sight-seeing only. Early in 1904 15 or 20 acres of bush on the domain was swept by fire, but the principal portion was saved by the energy and assistance of residents, change of wind, and contour of the ground. Danger from fire is annually recurrent, and would be somewhat minimised if the beautiful bush-clad area to the north of the domain was purchased as an addition.

KIHIKIHI DOMAIN, AUCKLAND LAND DISTRICT.

Sections Nos. 220 to 226, 228 to 234, 236 to 241, and 359 to 380, Town of Kihikihi. Area, 42 acres.

Leased. Work done during year: New roof put on grandstand. Improvements now on domain: One hundred and thirteen chains fences, grandstand, and small plantations. Used for football, polo, sports, picnics, and races. It is intended to further improve the grandstand during the ensuing year.

KIMBERLEY DOMAIN, CANTERBURY LAND DISTRICT.

Reserve No. 1566, Block III., Hawkins Survey District. Area, 14 acres.

Leased on improvement conditions. Improvements now on domain: Fences and plantation. Used for school-children's sports. It is proposed to plough and resow the domain with grass and clovers during the ensuing year. About one-third of the trees in the plantation were blown down during a gale last November.

KIMBOLTON DOMAIN, WELLINGTON LAND DISTRICT.

Section No. 92c, Block XIII., Apiti Survey District, and Suburban Section No. 16, Township of Birmingham. Area, 37 acres and 3 perches.

Leased. Work done during year: Three quarters of an acre fenced off and planted with ornamental trees, and fences erected around groups of trees. The middle portion will be opened to the public as soon as the trees have made a good start; this will afford a public garden close to the business part of the township. Improvements now on domain: 102 chains fences, plantation, and portion felled and grassed. The domain is not yet used by the public.

KIRWEE DOMAIN, CANTERBURY LAND DISTRICT.

Reserve No. 2416, Hawkins Survey District. Area, 10 acres.

Work done during year: Water-race cleared, hedges cut, and gorse grubbed. Improvements now on domain: Fenced on north and south boundaries with sod-and-wire fences, and on east and west boundaries with plain and barb-wire fences, and surrounded by plantation. The area also contains a cycle-track and a cricket-pitch laid in cement. Used for tennis, cricket, cycling, picnics, &c. Proposed operations for ensuing year: Painting and repairing entrance-gates, clearing water-race, and trimming hedges and trees.

KNOTTINGLY PARK DOMAIN, CANTERBURY LAND DISTRICT.

Reserve No. 1857, Waimate Survey District. Area, 169 acres.

Seventy-three acres leased on improvement conditions. The nursery for native plants was fenced and planted during the year; the plantations were also thinned to a considerable extent, which enhanced the appearance of the park. Improvements now on domain: Caretaker's house, windmill, fish-ponds, cook-house for picnic parties, native plantations (fenced and drained), pheasant-run, good fences, and plantations. Used for picnics, camping, and general recreation. Proposed operations for ensuing year: Thinning plantations, and further tree-planting.

KONGUTU DOMAIN, CANTERBURY LAND DISTRICT.

Reserve No. 3594, Block X., Wakanui Survey District. Area, 3 acres 1 rood.

During the year the domain was fenced, belt of shelter-trees planted, and the approaches to the domain improved.

KOWAI DOMAIN, CANTERBURY LAND DISTRICT.

Reserve No. 2066, Block VIII., Section No. 7989 and Part of Section No. 7855, Block XII., Grey Survey District. Area, 247 acres and 10 perches.

Work done during year: Maintenance. Improvements now on domain: Fences, plantations, windmill, tank, and buildings, containing stewards' room, jockeys' room, &c. Used for picnics, sports, and races.

KOWAI PASS DOMAIN, CANTERBURY LAND DISTRICT.

Reserve No. 1252, Block XII., Kowai Survey District. Area, 100 acres.

Work done during year: New fences erected on western boundary, and two new iron entrance-gates erected, *Pinus insignis* trees topped and some near the roadway felled, live hedges trimmed and kept in order. Improvements now on domain: Surrounded by plantations, two tennis-courts, and pavilion. Used for sports, picnics, football, tennis, and general recreation. Proposed operations for ensuing year: Further tree-topping.

KUAOTUNU DOMAIN, AUCKLAND LAND DISTRICT.

Section No. 6, Block II., Otama Survey District. Area, 11 acres 3 roods 30 perches.

Work done during year: *Macrocarpa* trees planted, culvert over creek constructed, gates and fences repaired. Improvements now on domain: Fences, gates, culvert, and plantations. Used for sports and football. Proposed operations for ensuing year: Draining, clearing, and tree-planting.

KUIRAU DOMAIN, AUCKLAND LAND DISTRICT.

Section No. 3, Block LV., Town of Rotorua. Area, 12 acres 2 roods 37 perches.

This domain is under the control of the Tourist Department, and contains hot springs. Work done during year: Formation of tracks to the springs.

KUMEROA DOMAIN, HAWKE'S BAY LAND DISTRICT.

Section No. 1, Block V., Town of Kumeroa. Area, 10 acres.

Leased. Not used by the public.

LAKE ELLESMERE DOMAIN, CANTERBURY LAND DISTRICT.

Reserve No. 3048, Block XII., Leeston Survey District. Area, 20 acres.

Work done during year: Boundary-fences renewed, 1,000 trees planted, and old plantations cleaned. Improvements now on domain: Fences, drains, wells, horse-trough, and plantations. Used chiefly for the accommodation of anglers. There are twenty-one fishermen's huts on the domain. It is proposed to sink an artesian well and erect subdivisional fences during the coming year.

LAUDER DOMAIN, OTAGO LAND DISTRICT.

Section No. 2, Block III., Lauder Survey District. Area, 200 acres.

Work done during year: Stewards' stand erected and 23 acres sown in grass. Improvements now on domain: Fences, two stands enclosed in picket fences, totalisator house, and grassing. Proposed operations for ensuing year: Erection of fences for Plumpton Coursing Club, and tree-planting.

LEITHFIELD DOMAIN, CANTERBURY LAND DISTRICT.

Reserves Nos. 2777 and 3595, Teviotdale Survey District. Area, 51 acres.

Work done during year: Construction of large drain. Improvements now on domain: Fences and drains. A portion of this domain comprises a long strip of the sea-beach, which is used for camping and picnics. Proposed operations for ensuing year: Erection of fences and tree-planting.

LEVIN DOMAIN, WELLINGTON LAND DISTRICT.

Section No. 21, Block I., Waiopahu Survey District; Suburban Section No. 24, Town of Levin. Area, 52 acres 1 rood 3 perches.

Work done during year: Picket fences erected round part of oval, gaps in plantation replanted, and general maintenance. Improvements now on domain: Fences, plantations, race-course, sports-ground, two tennis-courts, and shelter-shed. Used for football, hockey, cricket, tennis, picnics, cycling, sports, and races. It is proposed to top-dress the cricket-pitch, and construct a cycle-track during ensuing year.

LIMEHILLS DOMAIN, SOUTHLAND LAND DISTRICT.

Sections Nos. 1 to 7, and 9 to 17, Block IV., Town of Limehills. Area, 4 acres 1 rood 6 perches.

During the year 150 macrocarpa trees were planted and fenced in. Improvements now on domain: Fences, drains, and plantations. Used for cricket, football, and sports. Proposed operations for ensuing year: Construction of more drains.

LINCOLN DOMAIN, CANTERBURY LAND DISTRICT.

Parts of Sections Nos. 884, 1712, 1880, and 2223, Town of Lincoln. Area, 6 acres.

Work done during year: Tree-planting. Improvements now on domain: Fences and plantation. Used as a public resort. Proposed operations for ensuing year: Repairing fences.

LITTLE RIVER DOMAIN, CANTERBURY LAND DISTRICT.

Reserve No. 1649, Block XIII., Pigeon Bay Survey District. Area, 62 acres 2 roods.

Leased for grazing purposes. Improvements now on domain: Fences and grass. Proposed operations for ensuing year: Maintenance. It is considered desirable to exchange the domain for an area more suitable for recreation purposes, and an effort is being made to effect an exchange.

LOBURN DOMAIN, CANTERBURY LAND DISTRICT.

Reserve No. 3442, Block II., Rangiora Survey District. Area, 25 acres.

Eighteen acres leased on improvement conditions. Work done during year: Tree-planting, and improvements to existing plantations, and erection of conveniences. Improvements now on domain: Sixty-five chains boundary and subdivisional fences and hedges, small lake, and good iron entrance-gate. Used for athletic sports and picnics. Proposed operations for ensuing year: Maintenance and further tree-planting.

LUMSDEN DOMAIN, SOUTHLAND LAND DISTRICT.

Sections Nos. 1 to 6, Block XXIII., Town of Lumsden. Area, 19 acres 1 rood 4 perches.

Work done during year: Inside of running-track ploughed and levelled. Improvements now on domain: Secure fences, building, urinal, quarter-mile running-track. Used for sports and picnics. Proposed operations for ensuing year: Formation of sports-ground.

LYTTELTON DOMAIN, CANTERBURY LAND DISTRICT.

Parts of Sections Nos. 375 and 714, Town of Lyttelton. Area, 5 acres 2 roods 17 perches.

Work done during year: General maintenance. Improvements now on domain: Fences, plantations, drains, footpaths, and seats. Used as a promenade.

LYTTELTON AND HEATHCOTE DOMAIN, CANTERBURY LAND DISTRICT.

Parts of Section No. 271, Block XVI., Christchurch Survey District. Area, 14 acres 3 roods.

Leased on improvement conditions. Work done during year: Tree-planting and general maintenance. Improvements now on domain: One hundred chains fences, bridge over water-course, ten-roomed dwellinghouse, outhouses, and plantation. Used for picnics, encampments, and football. Proposed operations for the ensuing year: Further tree-planting.

MAHENO DOMAIN, OTAGO LAND DISTRICT.

Part of Section No. 2 of 22, Block VII., Oamaru Survey District. Area, 47 acres 3 roods 19 perches.

Work done during year: Tree-planting and erection of fences. Improvements now on domain: Fences, plantation, tennis-court, creamery, dwellinghouse and stable. Used for sports and picnics. It is proposed to consult an engineer with regard to bringing in a permanent water-supply.

MAHURANGI DOMAIN, AUCKLAND LAND DISTRICT.

Section No. 96B, Mahurangi Parish. Area, 66 acres 2 roods 12 perches.

Used as a rifle-range.

MAKAIRO DOMAIN, WELLINGTON LAND DISTRICT.

Section No. 47, Makairo Village Settlement. Area, 5 acres.

This domain is under the control of the Commissioner of Crown Lands, Wellington. It adjoins the Makairo Village Settlement and public school, and comprises grassed land, leased for grazing. The improvements consist of dwellinghouse, outbuildings, garden and orchard, fences, and drains. The lessee has the right to remove the improvements on the termination of his lease.

MAKAKAHI ISLAND DOMAIN, WELLINGTON LAND DISTRICT.

Situated in Block VIII., Mangahao Survey District. Area, 5 acres.

Used for recreation. Proposed operations for ensuing year: Tree-planting and erection of fences and river protective works.

MAKARAKA DOMAIN, HAWKE'S BAY LAND DISTRICT.

Known as the "Government Paddock," Turanganui Survey District. Area, 48 acres.

Leased for grazing. Not used by the public. Work done during year: Eradication of briars. Improvements now on domain: Double boundary-fence, with hedge of large trees between. The area is all sown with English grasses. Proposed operations for ensuing year: Tree-planting, repairs to fences, and further eradication of briars.

MAKAREWA DOMAIN, SOUTHLAND LAND DISTRICT.

Section No. 1, Block VIII., Town of Makarewa. Area, 13 acres and 18 perches.

Leased on improvement conditions. Work done during year: Four acres cleared, fenced, and grassed. Improvements now on domain: Five acres ploughed, grassed, and fenced. Four acres is available for picnics and general recreation. Proposed operations for ensuing year: Planting hedges and shelter-trees and construction of drain.

MAKOTUKU DOMAIN, HAWKE'S BAY LAND DISTRICT.

Sections Nos. 13 and 66, Block IX., Takapau Survey District. Area, 23 acres 3 roods 18 perches.

Leased. Work done during year: Grass removed from young trees, hedges trimmed, entrance-gates and dressing-room painted, trees planted, protective fences erected, and boundary-fences repaired. Improvements now on domain: All in grass, plantations, building, and fences. Used for general recreation. Proposed operations for ensuing year: Hedge-trimming and clearing grass from trees.

MAKURI DOMAIN, WELLINGTON LAND DISTRICT.

Section No. 162, and Suburban Sections Nos. 159 and 167, Town of Makuri. Area, 36 acres and 18 perches.

Improvements now on domain: Fifty chains fences, pavilion, plantation, tennis-court, and sports-ground. Used for picnics, football, and cricket.

MANGATAINOKA DOMAIN, WELLINGTON LAND DISTRICT.

Sections Nos. 79, Block XVIII., and 30, 31, and 32, Block XVII., Mangahao Survey District. Area, 24 acres 2 roods 5 perches.

Nineteen acres leased. Work done during year: Top-dressing, grassing, and general maintenance. Improvements now on domain: Fences, sports-ground, plantation, running and cycling track, shelter-shed, store-room, and drains. Used for picnics, football, cricket, and quoits. Proposed operations for ensuing year: Cleaning and pruning trees, bringing in water-supply, and erection of river protective works.

MANGAWEKA DOMAIN, WELLINGTON LAND DISTRICT.

Sections Nos. 69, 71, 73, 75, 77, and 99 to 104, Town of Mangaweka, 22, Suburbs of Mangaweka, and 50 and 52, Block X., Hautapu Survey District. Area, 72 acres 1 rood 27 perches.

Six acres leased. Work done during year: Removal of dead timber from bush, fences repaired, trees planted, 4 chains of roadway formed, and an area levelled and grassed. Improvements now on domain: Fences and plantation. Used for sports and picnics. Proposed operations for ensuing year: Erection of fence to preserve bush from invasion by cattle, tree-planting, construction of footpaths, and erection of seats.

MANGERE DOMAIN, AUCKLAND LAND DISTRICT.

Section No. 200, Manurewa Parish. Area, 95 acres.

Work done during year: Part of carriage-drive around mountain has been completed, gaps in plantation filled; the native shrubs and trees have grown exceedingly well, and fences and gates are in good repair. Improvements now on domain: Well-formed zigzag path to summit of mountain, several plantations, two tennis-courts, belt of trees encircling the entire domain, partly-formed carriage-drive, good ring fences, and some substantial gates with concrete pillars and iron railings. Used by visitors to the district; also for picnics, tennis, and general recreation. Proposed operations for ensuing year: Extension of carriage-drive and tree-planting. It is also proposed to alter the entrance-gates so as to make them close automatically.

MANUTAHU DOMAIN, TARANAKI LAND DISTRICT.

Part of Section No. 9, Manutahi Settlement, Hawera Survey District. Area, 3 acres 3 roods 2 perches.

Improvements now on domain: Twenty-five chains fences, hall, plantations, and grass paddock.

MATAMAU DOMAIN, HAWKE'S BAY LAND DISTRICT.

Section No. 33, Village of Matamau. Area, 7 acres 2 roods.

This domain is under the control of the Commissioner of Crown Lands, Napier. It contains some native bush, and is used for picnics.

MATAURA DOMAIN, SOUTHLAND LAND DISTRICT.

Sections Nos. 39, 40, and 41, Block XVII., Town of Mataura Bridge. Area, 13 acres 1 rood 24 perches.

Thirteen acres leased on improvement conditions. Improvements now on domain: Fences and plantations. Used for general recreation. Proposed operations for the ensuing year: Trimming trees, repairing fences, and top-dressing ground.

MAUNGATUA DOMAIN, OTAGO LAND DISTRICT.

Section No. 22, Block XI., Maungatua Survey District. Area, 566 acres.

Leased. Used for picnics.

MEANEE DOMAIN, HAWKE'S BAY LAND DISTRICT.

Section No. 2, Block VIII., Heretaunga Survey District (Meanee South). Area, 92 acres.

Leased for grazing.

MENZIES FERRY DOMAIN, SOUTHLAND LAND DISTRICT.

Sections Nos. 36 to 45, Block IV., Menzies Ferry Township. Area, 132 acres 1 rood.

This domain is administered by the Commissioner of Crown Lands, Invercargill, and is leased in four allotments.

MERCER DOMAIN, AUCKLAND LAND DISTRICT.

Sections Nos. 136 and 139, Koheroa Parish. Area, 105 acres 2 roods.

Work done during year: Eradication of noxious weeds. Improvements now on domain: Fences. Used for picnics.

METHVEN DOMAIN, CANTERBURY LAND DISTRICT.

Reserves Nos. 3184 and part of 2026, Spaxton Survey District. Area, 21 acres.

Work done during year: Hedge-trimming, gorse-grubbing, and maintenance. Improvements now on domain: Fences, plantations, swimming-bath, and waterworks. Used for cricket, tennis, and other sports.

MILLERTON DOMAIN, NELSON LAND DISTRICT.

Sections Nos. 142 and 263, Town of Millerton. Area, 9 acres 2 roods 36 perches.

Work done during year: Formation of road and levelling. Improvements now on domain: Ten and a half square chains levelled and road giving access. Used for cricket, football, sports, picnics, &c.; also as drilling-ground for Volunteers. Proposed operations for ensuing year: Further levelling.

MOA FLAT AND ETTRICK DOMAIN, OTAGO LAND DISTRICT.

Section No. 44, Block I., Benger Survey District. Area, 420 acres.

This domain is administered by the Commissioner of Crown Lands, Dunedin, and is held under a pastoral license.

MONKEY FACE DOMAIN, MARLBOROUGH LAND DISTRICT.

Section No. 5, Block III., Hundalee Survey District. Area, 333 acres.

This domain is not used by the public. It is leased. No improvements have been effected, with the exception of boundary-fences, which are the property of the lessee.

MORVEN DOMAIN, CANTERBURY LAND DISTRICT.

Reserve No. 3596, Block VII., Waitaki Survey District. Area, 60 acres.

Work done during year: Tree-planting, ploughing, harrowing, and erection of 40 chains fences, and conveniences. Improvements now on domain: Forty chains fences, gates, stile, plantation, and conveniences. Used for sports, picnics, and general recreation. Proposed operations for ensuing year: Further tree-planting, and general improvements.

MOTUEKA DOMAIN, NELSON LAND DISTRICT.

Section No. 193, Block III., Motueka Survey District. Area, 50 acres.

Leased on improvement conditions. Improvements now on domain: Fences, plantations, and iron gate. Not used by the public.

MOUNT BRYON DOMAIN, TARANAKI LAND DISTRICT.

Area, 5 acres 2 roods.

Work done during year: Tree-planting and maintenance. Improvements now on domain: Fences and plantation. Used for general recreation.

MOUNT EDEN DOMAIN, AUCKLAND LAND DISTRICT.

Allotments Nos. 1A, of Section No. 6, and 68A of Section No. 10, Suburbs of Auckland. Area, 63 acres 2 roods 38 perches.

Work done during year: Tree-planting, formation and grading of roads and footpaths, and general maintenance. Used for public recreation.

MOUNT HOBSON DOMAIN, AUCKLAND LAND DISTRICT.

Lot No. 2A of section No. 11, Suburbs of Auckland. Area, 23 acres 1 rood.

Work done during year: Eradication of scrub and noxious weeds, tree-planting, maintenance, and general improvement. Improvements now on domain: Three plantations of native trees, seats, paths, gates, and fences. Used for public recreation. Proposed operations for ensuing year: Erection of new gates and seats, improvement of approaches to domain, and general maintenance.

MOUNT MAUNGANUI DOMAIN, AUCKLAND LAND DISTRICT.

Section No. 1, Block VI., Tauranga Survey District and Motuotau and Moturiki Islands. Area, 203 acres 3 roods 27 perches.

Work done during year: Repairs to wharves. Improvements now on domain: Fences, plantations, track to top of mount, and two wharves (one of stone and one of wood). Used for picnics and summer camping-ground. Proposed operations for ensuing year: Formation of footpaths, and eradication of noxious weeds.

MOUNT RICHMOND DOMAIN, AUCKLAND LAND DISTRICT.

Allotment No. 60 of Section No. 12, Waitemata Parish. Area, 33 acres.

Work done during year: Erection of fences. Improvements now on domain: Fences, grass, and small plantation. Occasionally used by the public.

MOUNT ROSKILL DOMAIN, AUCKLAND LAND DISTRICT.

Allotments Nos. 85B and 85F of Section No. 10, Suburbs of Auckland. Area, 11 acres 2 roods 22 perches.

Leased on improvement conditions. Work done during year: Survey of boundaries.

MOUNT SMART DOMAIN, AUCKLAND LAND DISTRICT.

Allotment No. 22 of Section No. 17, Suburbs of Auckland. Area, 32 acres 2 roods 22 perches.

Improvements now on domain: Fences. Used for grazing only.

MOUNT SOMERS DOMAIN, CANTERBURY LAND DISTRICT.

Reserve No. 1633, Ashburton Survey District. Area, 30 acres.

Work done during year: Erection of new gates, and maintenance. Improvements now on domain: Fences, plantation, swimming-pool, grassing, racecourse, and buildings. Used for cricket, football, lawn-tennis, bathing, racing, sports, and picnics.

MOUNT ST. JOHN DOMAIN, AUCKLAND LAND DISTRICT.

Allotment No. 12A of Section No. 11, Suburbs of Auckland. Area, 8 acres 2 roods 21 perches.

Improvements now on domain: Fences and plantation. Used as a public resort. Proposed operations for ensuing year: General improvement.

MOUNT WELLINGTON DOMAIN, AUCKLAND LAND DISTRICT.

Part of Section No. 56, Waitemata Parish, and Allotments Nos. 51, 51A, 55, and part of 56 of Section No. 1 of the small Lots near Panmure Village. Area, 67 acres and 10 perches.

Work done during year: Eradication of noxious weeds, removal of surface stones, erection of stone wall and new gates, and construction of tennis-court. Improvements now on domain: Fences, plantations, and footpaths to top of mountain. Used by sightseers and for picnics and recreation. Proposed operations for ensuing year: Improvement to track to mountain-top and installation of water-supply.

MOWHANAU DOMAIN, WELLINGTON LAND DISTRICT.

Sections Nos. 18, 66, and 70, Mowhanau Village. Area, 12 acres 1 rood 3 perches.

This domain is under the control of the Commissioner of Crown Lands, Wellington. It is situated about nine miles from Wanganui, and is occasionally used as a camping-ground. The area comprises open land in grass.

MURCHISON DOMAIN, NELSON LAND DISTRICT.

Section No. 18 (Square 170), Town of Murchison. Area, 15 acres.

Leased on improvement conditions. The public have the right of access.

NASEBY DOMAIN, OTAGO LAND DISTRICT.

Section No. 23, Block I., Naseby Survey District. Area, 120 acres.

Work done during year: Improvements to racecourse, erection of picket fence, judge's box, totalisator-house, and additions to grandstand. Used for horseracing.

NELSON DOMAIN, NELSON LAND DISTRICT.

Area, 21 acres 3 roods 5 perches.

Improvements now on domain: Fences, plantation, and band-rotunda. Used for general recreation.

NEW BRIGHTON DOMAIN, CANTERBURY LAND DISTRICT.

Reserve No. 3061, Christchurch Survey District. Area, 8 acres and 17 perches.

No improvements effected. The domain consists chiefly of flax swamp.

NEWMAN DOMAIN, WELLINGTON LAND DISTRICT.

Suburban Sections Nos. 30 and 115, Town of Newman. Area, 26 acres and 24 perches.

Work done during year: Construction of culvert and formation of road. Improvements now on domain: Eighteen acres felled and grassed, 4 acres stumped and grassed, and 14 chains of fencing. Used for sports, picnics, &c. Proposed operations for ensuing year: Removal of scrub and rubbish.

NEWMARKET DOMAIN, AUCKLAND LAND DISTRICT.

Allotments Nos. 32 and 33 of Section No. 4, Suburbs of Auckland. Area, 3 acres 2 roods.

Nil report furnished.

NGAROTO DOMAIN, AUCKLAND LAND DISTRICT.

Section No. 176A, Ngaroto Parish. Area, 6 acres 1 rood.

Leased. Work done during year: Ploughing, and eradication of noxious weeds. Proposed operations for ensuing year: Further eradication of noxious weeds.

NGARUAWAHIA DOMAIN, AUCKLAND LAND DISTRICT.

Sections Nos. 123, Horotiu Parish, 101, Suburbs of Newcastle, and 607 and 663A, Town of Ngaruawahia. Area, 131 acres 1 rood 28 perches.

Work done during year: Erection of fences, scrub-clearing, and construction of racecourse. Improvements now on domain: Fences and racecourse. Used for picnics and horse-racing.

NGATIKOI DOMAIN, AUCKLAND LAND DISTRICT.

Section No. 15, Block XVI., Ohinemuri Survey District. Area, 133 acres 3 roods.

Work done during year: Erection of boundary-fences, scrub-clearing, and tree-planting. Improvements now on domain: Fences and plantation. Not yet fit for public use.

NORMANBY DOMAIN, TARANAKI LAND DISTRICT.

Subdivision No. 10 of Section No. 45, Block V., Hawera Survey District. Area, 20 acres.

Work done during year: General maintenance. Improvements now on domain: Fences and plantation. Used for sports and public recreation.

NORSEWOOD DOMAIN, HAWKE'S BAY LAND DISTRICT.

Section No. 174, Block V., Takapau Survey District. Area, 5 acres 2 roods 33 perches.

No work done during year. Improvements now on domain: Fences and grass. Proposed operations for ensuing year: Tree-planting, and construction of drain.

NORTHCOTE DOMAIN, AUCKLAND LAND DISTRICT.

Sections Nos. 1 to 10, and 68, Town of Woodside. Area, 3 acres 1 rood 29 perches.

Work done during year: Maintenance. Improvements now on domain: Fences, and seating-accommodation. Used for picnics and public recreation.

NUKUMARU DOMAIN, WELLINGTON LAND DISTRICT.

Sections Nos. 63 and 66, Block XIII., Nukumaru Survey District, and 67, 71, and 71A, Block XIV., Wairoa Survey District. Area, 1,220 acres.

Leased as a small grazing-run before being brought under the provisions of "The Public Domains Act, 1881." Lease not yet expired.

OCEAN BEACH DOMAIN, OTAGO LAND DISTRICT.

Sections Nos. 28 and 31, Block VII., Otago Peninsula Survey District, and 4 and 6, Block XII., Dunedin and East Taieri Survey District. Area, 280 acres 2 roods 14 perches.

During the year under review the sanitary work has been satisfactorily performed. The main entrance to the beach at St. Kilda has been improved considerably, and a large quantity of metal has been placed on the Tomahawk Road, which passes through the domain. Marram-grass has been planted successfully, notwithstanding an unusually windy season; the lupin is also flourishing. The baths and premises have been kept in fair order, and the pile groin erected by the Public Works Department two years ago has proved an unqualified success. Scrub groins erected in the lagoons off St. Kilda have reduced the area which was from time to time covered with sea-water. It is proposed to continue the planting of marram-grass and lupins until all the sand is fixed.

OHINEWAI DOMAIN, AUCKLAND LAND DISTRICT.

Section No. 49, Taupiri Parish. Area, 64 acres 2 roods 30 perches.

Improvements now on domain: Three acres plantation. Used for picnics. Proposed operations for ensuing year: Further tree-planting.

OHOKA AND EYRETON DOMAIN, CANTERBURY LAND DISTRICT.

Reserve No. 1567, Mandeville Survey District. Area, 200 acres.

Work done during year: Seventeen chains fences erected on western boundary, grandstand reroofed and painted. Improvements now on domain: Fences, belt of trees on boundaries 1 chain wide, grandstand, stables, office, cloak-room, horse-yard and stabling-paddock fenced. Used principally for horse-racing.

OKOTUKU DOMAIN, WELLINGTON LAND DISTRICT.

Sections Nos. 338 and 140, Block VI., Wairoa Survey District. Area, 161 acres and 23 perches.

Work done during year: General maintenance, and improvements to dam. Improvements now on domain: Fences, plantation, grandstand, luncheon-rooms, kitchen, ticket-office, loose-boxes, and dressing-room. Used for races, training, rifle-shooting, picnics, tournaments, and Volunteer encampments. Proposed operations for ensuing year: Erection of fences.

OMAKA DOMAIN, MARLBOROUGH LAND DISTRICT.

Sections Nos. 31 and part 2 of 33, Block III., Taylor Pass Survey District. Area, 242 acres.

Work done during year: Fences erected to protect plantations, trees and shrubs planted, and cottage repaired, painted, and verandah added. Improvements now on domain: Boundary and subdivisional fences, four-roomed cottage, plantations, and drains. Used for games and recreation. The cottage is leased to a weekly tenant.

ONEHUNGA DOMAIN, AUCKLAND LAND DISTRICT.

Allotment No. 14 of Section No. 36, Town of Onehunga. Area, 5 acres 1 rood 31 perches.

This domain contains a stone house, which is leased, together with certain grazing rights.

ONE-TREE HILL DOMAIN, AUCKLAND LAND DISTRICT.

Allotments Nos. 54 and part of 11 of Section 12, Suburbs of Auckland. Area, 121 acres and 28 perches.

Work done during year: Drives metalled, paths shelled, rocks removed, hedges trimmed, and plantations planted. Improvements now on domain: Caretaker's lodge, gates at entrance, wicket gates, plantations, drives, and paths. Used for driving, walking, picnics, and recreation generally.

OPAHEKE DOMAIN, AUCKLAND LAND DISTRICT.

Allotment No. 132 of Section No. 2, Opaheke Parish. Area, 16 acres 2 roods 6 perches.

Leased on improvement conditions. Improvements now on domain: Fences.

OPOTIKI DOMAIN, AUCKLAND LAND DISTRICT.

Allotments Nos. 12, 13, and 28, 168 to 177, and 207 to 216, of Sections Nos. 1 and 84, 85, 86, 130, 131, and 132 of Section No. 2, Town of Opotiki. Area, 11 acres 3 roods.

Work done during year: Cricket-reserve worked and cleared of weeds, and sown down in English grasses. Improvements now on domain: Fences, plantation, and grassing. Used for athletic sports. Proposed operations for ensuing year: Erection of pavilion and tree-planting.

OPOTIKI AND WAIIOEKA DOMAIN, AUCKLAND LAND DISTRICT.

Sections Nos. 82, 83, 84, 85, and 333, Waioeka Parish. Area, 299 acres 1 rood.

Work done during year: Erection of fences and seats, and maintenance. Improvements now on domain: Fences, drains, grandstand, ladies' room, judge's box, plantation, and racecourse. Used for horse-racing, athletic sports, Volunteer encampments, and picnics. Proposed operations for ensuing year: Clearing scrub and fern off 20 acres and sowing in grass, additions to grandstand, and tree-planting.

OPUNAKE DOMAIN, TARANAKI LAND DISTRICT.

Blocks I., IV., V., VI., VIII., and Sections Nos. 1 to 6 of Block II., Town of Opunake. Area, 11 acres 1 rood 11 perches.

Work done during year: Tree-planting, erection of new gates, and general improvement, and maintenance. Improvements now on domain: Fences (boundary and subdivisional), plantation, boxthorn hedges on boundaries, 60 chains drains, and sports-ground. Used for sports, cricket, and football. Proposed operations for ensuing year: Planting flax on eastern boundary, levelling, erection of grandstand, construction of drains, top-dressing, tree-planting, and maintenance.

ORARI PARK DOMAIN, CANTERBURY LAND DISTRICT.

Reserves Nos. 3028, 3081, and 3082, parts of Barker and Macdonald Streets, and Sections No. 11 of Block V., and 16 of Block VI., Town of Orari. Area, 14 acres and 28 perches.

Work done during year: Four acres grassed, hedges trimmed, and fences repaired. Improvements now on domain: Fences, hedges, and plantation. Used for lawn-tennis. Proposed operations for ensuing year: Tree-planting.

ORMOND DOMAIN, HAWKE'S BAY LAND DISTRICT.

Suburban Sections Nos. 11 and 12, Town of Ormond, and the "Bush Reserve" in Block I., Waimata Survey District. Area, 127 acres 3 roods 31 perches.

Leased in five allotments. Work done during year: Stumping and clearing. Improvements now on domain: Fences, drains, buildings, and plantation. Proposed operations for ensuing year: Draining, fencing, planting, and stumping.

ORMONDVILLE DOMAIN, HAWKE'S BAY LAND DISTRICT.

Block I., an additional 4 acres, Town of Ormondville. Area, 19 acres 3 roods 20 perches.

Work done during year: Erection of pavilion. The domain is used for cricket, sports, football, and by school-children.

OTAHUHU DOMAIN, AUCKLAND LAND DISTRICT.

Suburban Section No. 19, Town of Otahuhu. Area, 5 acres.

Improvements now on domain: Fences, grassing, and small plantation. Used for cricket, football, and general recreation.

OTAU DOMAIN, AUCKLAND LAND DISTRICT.

Allotments Nos. 14, 31 to 36, and 41 to 43 of Section No. 1, and 26, 28, 31, and 32 of Section No. 2, of the Village of Otau. Area, 2 acres and 15 perches.

Leased on improvement conditions. No improvements have yet been effected.

OTAUTAU DOMAIN, SOUTHLAND LAND DISTRICT.

Section No. 5, Block II., Aparima Hundred. Area, 63 acres 2 roods.

Leased on improvement conditions. Work done during year: Eradication of noxious weeds. Improvements now on domain: Boundary-fences.

OTOKIA DOMAIN, OTAGO LAND DISTRICT.

Section No. 47, Block I., Otokia Survey District. Area, 12 acres 2 roods.

Work done during year: Erection of fences. Improvements now on domain: Fences. Used for picnics. Proposed operations for ensuing year: Erection of stand for horses, and turnstile.

OUTRAM DOMAIN, OTAGO LAND DISTRICT.

Sections Nos. 31 and 32, Block VII., Maungatua Survey District. Area, 391 acres 1 rood 25 perches.

Work done during year: Erection of shelter-sheds and gates, eradication of noxious weeds, and general maintenance. Improvements now on domain: Plantations, fences, and cycling-track. Used for picnics, tennis, football, cricket, bowls, and cycling. Proposed operations for ensuing year: Tree-planting, and erection of seats.

OWAKA DOMAIN, OTAGO LAND DISTRICT.

Sections Nos. 31, 53, 54, 55, 58, 59, 60, and 61, Block VI., Glenomaru Survey District. Area, 12 acres 1 rood 32 perches.

No improvements effected. Domain is partly clad with native bush.

PAEROA DOMAIN, AUCKLAND LAND DISTRICT.

Blocks XIV., XXII., and Sections Nos. 8 to 12, Block XV., and 1 to 3, Block XXI., Town of Paeroa. Area, 17 acres 1 rood 37 perches.

Work done during year: Bowling-green laid down and fenced in, 300 ornamental trees planted, Kaikapo Hill fenced and cleared, willow-trees removed, tennis-court, artificial pond, and paths are in course of construction. Improvements now on domain: Ninety-two chains fences, plantations, and cottage. Used for bowling. Proposed operations for ensuing year: Ploughing and grassing, completion of tennis-courts, artificial pond, construction of paths, and football-ground, and erection of band-rotunda. It is also proposed to fill in an old watercourse.

PAHAUTANUI DOMAIN, WELLINGTON LAND DISTRICT.

Section No. 115, Block IX., Paikakariki Survey District. Area, 105 acres 1 rood.

Work done during year: Eradication of noxious weeds. Improvements now on domain: Fences, drains, and cricket-ground. Used for cricket and general recreation. Proposed operations for ensuing year: Erection of 50 chains fences, gorse-grubbing, and clearing of drains. The title to this domain has only recently been established, and improvement has consequently been retarded.

PAHI DOMAIN, AUCKLAND LAND DISTRICT.

Section No. 102, Suburbs of Pahi. Area, 7 acres 2 roods 8 perches.

Improvements now on domain: Fences. Not used by the public.

PAKURANGA DOMAIN, AUCKLAND LAND DISTRICT.

Allotments Nos. 17 and 18 of Section No. 5, of Small Farms, near Howick. Area, 22 acres 3 roods 30 perches.

Work done during year: Erection of fences, improvement to surface, construction of water-troughs, and repairs. Improvements now on domain: Eighty chains fences. Used for picnics and sports.

PALMERSTON NORTH DOMAIN, WELLINGTON LAND DISTRICT.

Sections Nos. 215, 220, and part of 214, Kairanga Survey District. Area, 13 acres.

Work done during year: General maintenance. Proposed operations for the ensuing year: Protection of native bush by further planting.

PALMERSTON DOMAIN, OTAGO LAND DISTRICT.

Sections Nos. 5 to 18, Block XVI., Town of Palmerston. Area, 3 acres 2 roods.

Improvements now on domain: Boundary-fences. Used for cricket and football.

PANMURE DOMAIN, AUCKLAND LAND DISTRICT.

Sections Nos. 45, 63, 64, 77, and 78 of Section No. 2, Village of Panmure. Area, 5 acres.

Improvements now on domain: Enclosed on three sides by stone wall; the fourth side is bounded by the River Tamaki. Used for sports and games.

PAPAKURA DOMAIN, HAWKE'S BAY LAND DISTRICT.

Section No. 19, Block VIII., Heretaunga Survey District. Area, 39 acres 2 roods.

Leased for grazing purposes.

PAPANUI DOMAIN, CANTERBURY LAND DISTRICT.

Part of Rural Section No. 5, Block VII., Christchurch Survey District. Area, 6 acres 2 roods 25 perches.

Work done during year: Hedges and trees trimmed, and buildings and gates repaired and painted. Improvements now on domain: Pavilion, outbuildings, forms, seats, fences, gates, plantations, artesian well, and drain. Used for cricket, football, and picnics. Proposed operations for ensuing year: Repairs to well, and maintenance.

PAREMOREMO DOMAIN, AUCKLAND LAND DISTRICT.

Section No. 94A, Paremuremo Parish. Area, 5 acres and 17 perches.

This domain is unimproved and unoccupied.

PARKVILLE DOMAIN, WELLINGTON LAND DISTRICT.

Sections Nos. 182, 183, and 185, Suburbs of Parkville. Area, 36 acres 1 rood.

Twenty-seven acres leased on improvement conditions. Improvements now on domain: 25 chains fences, 16 acres grass, suspension bridge over Makakahi River, and willow-plantation on river bank. Proposed operations for ensuing year: Erection of fences.

PATEA DOMAIN, TARANAKI LAND DISTRICT.

Blocks XLIV. and XLV., Town of Patea. Area, 65 acres 2 roods 25 perches.

Work done during the year: Additions to tennis-pavilion, and general maintenance. Improvements now on domain: Fences, gates, grandstand, two pavilions, paths, well, tank, and plantation. Used for tennis, hockey, football, cricket, picnics, and athletic sports.

PATUTAHU DOMAIN, HAWKE'S BAY LAND DISTRICT.

Section No. 81, Block I., Turanganui Survey District. Area, 61 acres and 22 perches.

Work done during year: Approaches gravelled, new culvert put in, gate erected, plantation improved, and general maintenance. Improvements now on domain: Fences, drains, plantation, culverts, gates, and two sheds. Used principally for picnics. Proposed operations for ensuing year: Formation of cricket-pitch, erection of fences, construction of culvert, sinking well, and erection of pump and windmill.

PATUTAHU TOWN DOMAIN, HAWKE'S BAY LAND DISTRICT.

Sections Nos. 17 to 20, 24 to 30, 65 to 76, and 102 to 113, Town of Patutahi. Area, 8 acres 1 rood 16 perches.

Work done during year: Improvement to public hall. Improvements now on domain: Fences, plantation, hall, containing main hall, stage, supper-rooms, and outhouses. Used for public entertainments.

PELORUS DOMAIN, MARLBOROUGH LAND DISTRICT.

Sections Nos. 25, Block VIII., Heringa Survey District, and 66 (Te Hau Island), Block XI., Wakamarina Survey District. Area, 22 acres.

No improvements effected; land not used. Nine acres of the domain is an island in the Pelorus River, subject to floods, and covered with scrub and noxious weeds. The remaining 13 acres is in native bush.

PIHA DOMAIN, AUCKLAND LAND DISTRICT.

Section No. 39, Karangahape Parish. Area, 146 acres.

This domain is under the control of the Tourist Department, and is used as a scenic reserve. It is proposed to clear the area of noxious weeds during the ensuing year.

PIHAMA DOMAIN, TARANAKI LAND DISTRICT.

Section No. 48, Block I., Oeo Survey District. Area, 14 acres 2 roods.

Work done during year: Gorse-grubbing.

PIPIRIKI DOMAIN, WELLINGTON LAND DISTRICT.

Sections Nos. 1, 2, and 10, Block, IV., Town of Pipiriki. Area, 17 acres 3 roods 29 perches.

Not used by the public; not suitable for recreation.

PLEASANT POINT DOMAIN, CANTERBURY LAND DISTRICT.

Reserve No. 1580, Pareora Survey District. Area, 66 acres.

Work done during year: Repairs to fences. Used for sports and picnics.

POHANGINA DOMAIN, WELLINGTON LAND DISTRICT.

Section No. 34, Town of Pohangina. Area, 10 acres.

Work done during year: Two acres stumped and levelled. Improvements now on domain: Fences, plantation, and two acres stumped and levelled. Not used by the public.

POKENO DOMAIN, AUCKLAND LAND DISTRICT.

Sections Nos. 138 and 154, Mangatawhiri Parish. Area, 132 acres and 4 perches.

This domain is under the control of the Commissioner of Crown Lands, Auckland. It comprises steep, broken land, without formed road access, and is mostly covered with heavy scrub. Blackberries appear in places.

POUKIORE DOMAIN, WELLINGTON LAND DISTRICT.

Section No. 35, Block XV., Tiriraukawa Survey District. Area, 17 acres 3 roods 8 perches.

Improvements now on domain: Fences, clearing, and grassing. Proposed operations for ensuing year: Repairs to boundary-fences, stumping, and ploughing about 1 acre.

PORT ROBINSON DOMAIN, CANTERBURY LAND DISTRICT.

Reserves Nos. 3151, 3159, and 3160, Block XI., Cheviot Survey District. Area, 113 acres 1 rood.

Work done during year: Erection of 6 chains fencing, and tree-planting. Improvements now on domain: Fifty chains fences and two acres plantation. Used for picnics. Proposed operations for ensuing year: Erection of fences and rustic seats, formation of track, and tree-planting.

PREBBLETON DOMAIN, CANTERBURY LAND DISTRICT.

Reserve No. 2419, Christchurch Survey District. Area, 3 acres 2 roods 15 perches.

Work done during year: Plantation cleaned and hedges trimmed. Improvements now on domain: Fences and plantation. Used for picnics, sports, and football. Proposed operations for ensuing year: Replacing trees that failed.

PUKERAU DOMAIN, SOUTHLAND LAND DISTRICT.

Sections Nos. 8, 9, 10, and 11, Block V., Town of Pukerau. Area, 4 acres.

Work done during year: The domain was ploughed and thoroughly worked, and a crop of turnips sown. It is expected that grass will be sown when the crop is removed, and a good sole is anticipated. Improvements now on domain: Fences and plantations. Used for cricket, football, and picnics.

PUKETITIRI DOMAIN, HAWKE'S BAY LAND DISTRICT.

Section No. 30, Block XIV., Pohui Survey District. Area, 11 acres 3 roods 16 perches.

Leased on improvement conditions. Work done during year: Erection of 25 chains fences. Improvements now on domain: Boundary-fences. The area is at present in crop, and will be sown down in grass during the coming year.

PUNEHU DOMAIN, TARANAKI LAND DISTRICT.

Sections Nos. 1, 2, 5, 6, and 41, Village of Ponehu. Area, 7 acres.

This domain is under the control of the Commissioner of Crown Lands, New Plymouth. It was cleared of bush about twelve years ago. A portion of it is swamp. It is not used by the public.

PUNGAREHU DOMAIN, TARANAKI LAND DISTRICT.

Section No. 111, Block XII., Cape Survey District. Area, 10 acres.

Improvements now on domain: Boundary-fences. Used for cricket, sports, and picnics. Proposed operations for ensuing year: Tree-planting.

PUNIU DOMAIN, AUCKLAND LAND DISTRICT.

Section No. 54A and Allotments Nos. 6 and parts of 7 and 8 of Section No. 236, Mangapiko Parish, and part of Section No. 223, Puniu Parish. Area, 22 acres and 12 perches.

Eight acres leased on improvement conditions. Work done during year: Eradication of noxious weeds, and general maintenance. Improvements now on domain: Fences, plantations, and pavilion.

PURANGI DOMAIN, TARANAKI LAND DISTRICT.

Section No. 2, Block II., Ngatimaru Survey District. Area, 10 acres.

Work done during year: Improvement to entrance. Improvements now on domain: Clearing and grassing. Used for picnics. Proposed operations for ensuing year: Further improvement to entrance and formation of running-track.

QUEEN'S PARK DOMAIN (WANGANUI), WELLINGTON LAND DISTRICT.

Portions of Reserves E and K, Town of Wanganui. Area, 15 acres 3 roods 22 perches.

Work done during year: Formation of drive, thinning plantations, levelling, grassing, and general maintenance. Improvements now on domain: Band-rotunda, museum, fences, and plantations. Used as a public park. Proposed operations for ensuing year: Removal of unnecessary trees, further formation of drive, construction of new paths, and general maintenance.

RAETIHI DOMAIN, WELLINGTON LAND DISTRICT.

Sections Nos. 211 and 290, Town of Raetihi. Area, 14 acres 1 rood 18 perches.

Work done during year: Fifty chains fences erected. Improvements now on domain: Fences, and 3 acres cleared and stumped. Used for sports and picnics. Proposed operations for ensuing year: Tree-planting, clearing, and stumping.

RANGATAUA DOMAIN, WELLINGTON LAND DISTRICT.

Section No. 24c, Block VIII., Makotuku Survey District. Area, 96 acres 1 rood.

Not used by the public. Leased for grazing.

RANGIORA DOMAIN, CANTERBURY LAND DISTRICT.

Reserves Nos. 132 and 1563, Rangiora Survey District. Area, 95 acres

Work done during year: Erection of fences, and maintenance. Improvements now on domain: Boundary-fences, plantations, grandstand, cycle-track, and conveniences. Used for sports, cricket, croquet, football, hockey, picnics, and races.

RANGITOTO ISLAND DOMAIN, AUCKLAND LAND DISTRICT.

Area, 5,693 acres 2 roods of Rangitoto Island, situate in Rangitoto Survey District.

Work done during year: Stone shelter-shed and 800-gallon tank erected, and path formed to summit of mountain. Improvements now on domain: Wharf, concrete tank, shelter-shed and tank, seats, fireplaces, and well-graded path. Used for picnics, also visited by tourists. The Devonport Ferry Company runs steamers to the domain twice a week and on all holidays during the summer months, and pays the Domain Board 1d. on each ticket sold.

RANGIWAHIA DOMAIN, WELLINGTON LAND DISTRICT.

Section No. 61, Town of Rangiwahia. Area, 10 acres.

Work done during year: Tree-planting and hedge-trimming. Improvements now on domain: Sheds, plantations, and hedges. Used for sports, cricket, football, and picnics.



H. G. 1000. 1000.

RODOKARI DOMAIN, TARANAKI.



H. G. 1000. 1000.

RODOKARI DOMAIN, TARANAKI.

RAWHITI DOMAIN, CANTERBURY LAND DISTRICT.

Reserve No. 1616 and part of Reserve No. 1579, Christchurch Survey District. Area, 156 acres.

Work done during year: Tree-planting and improvement to existing plantations. Improvements now on domain: Boundary-fences, plantations, and two artesian wells. Used as a promenade, and also for picnics. Proposed operations for ensuing year: Further improvements to plantations, and sinking another artesian well.

RECORD REIGN DOMAIN, OTAGO LAND DISTRICT.

Section No. 1, Block LXXXIX., Town of Cromwell. Area, 4 acres.

Work done during year: Tree-planting, laying on additional water for irrigation purposes, erection of pavilion, and construction of sports-track. Improvements now on domain: Twenty-five chains fences, plantations, pavilion, and sports-track. Used for sports, picnics, band-parades, Volunteer encampments, and general recreation. Proposed operations for ensuing year: Further tree-planting, and construction of irrigation-works. It is also proposed to erect a band-rotunda, form a bowling-green, and provide more seating accommodation.

REEFTON DOMAIN, NELSON LAND DISTRICT.

Section No. 189, Block IX., Reefton Survey District. Area, 72 acres 2 roods 17 perches.

Used chiefly for picnics. Thirteen acres included in the area mentioned above has been taken for the Reefton-Inangahua Railway.

RICHMOND DOMAIN, CANTERBURY LAND DISTRICT.

Part of Rural Section No. 182, Christchurch Survey District. Area, 7 acres.

Work done during year: Construction of a drain, and general maintenance. Improvements now on domain: Pavilion, fences, plantation, and two artesian wells. Used for cricket, football, and picnics.

RIMU DOMAIN, WESTLAND LAND DISTRICT.

Section No. 356, Block V., Kanieri Survey District. Area, 5 acres and 19 perches.

Work done during year: Levelling and gravelling. Improvements now on domain: Three-quarters of an acre cleared and partially levelled and gravelled. Not yet fit for public use. Proposed operations for ensuing year: Erection of fences, and further clearing and levelling.

RIVERTON DOMAIN, SOUTHLAND LAND DISTRICT.

Sections Nos. 18, 19, 21, 22, 23, and 24, Block XXV., Jacob's River Hundred. Area, 11 acres 1 rood 34 perches.

Work done during year: Well sunk. Improvements now on domain: 26 chains close weather-board fence, plantation, four-roomed dwelling, caretaker's hut, and ticket-office. Used for cattle shows, Volunteer camps, sports, football, picnics, and cricket.

ROSLYN DOMAIN, OTAGO LAND DISTRICT.

Section No. 7, Block X., Dunedin and East Taieri Survey District. Area, 12 acres 2 roods 28 perches.

Not used by the public. Proposed operations for ensuing year: Improvements to road and track, and repairs to culverts.

ROSS DOMAIN, WESTLAND LAND DISTRICT.

Situated in Town of Ross. Area, 3 acres 3 roods 16 perches.

Work done during year: Tree-planting. Improvements now on domain: Two sheds, fences, drains, and plantation. Proposed operations for ensuing year: Levelling and draining.

ROKOKARE DOMAIN (NGAIRE), TARANAKI LAND DISTRICT.

Section No. 1, Block XII., Ngaire Survey District. Area, 530 acres.

This domain is under the control of the Commissioner of Crown Lands, New Plymouth. Improvements now on domain: Boundary-fences and hut. The area is practically all in native bush, and contains the Rotokare Lake. Proposed operations for ensuing year: Repairs to fences.

ROKOKARE DOMAIN (PARITUTU), TARANAKI LAND DISTRICT.

Part of Native Reserve No. 2 (Arapepe), Block VIII., Paritutu Survey District. Area, 48 acres.

This domain was obtained in exchange for Crown lands, and is under the control of the Commissioner of Crown Lands, New Plymouth. No improvements have been effected, and it is not used by the public. The area contains some native bush, a natural clearing, and a small lagoon.

RUAPUNA DOMAIN, CANTERBURY LAND DISTRICT.

Reserve No. 3034, Block X., Shepherd's Bush Survey District. Area, 27 acres.

Leased on improvement conditions. Improvements now on domain: Plantation, fences, and grassing. Not used by the public. Proposed operations for ensuing year: Planting trees where others have failed.

RESERVE NO. 3139, CANTERBURY LAND DISTRICT.

Situated in Block IX., Cheviot Survey District. Area, 5 acres 1 rood.

This domain is under the control of the Commissioner of Crown Lands, Christchurch. It comprises a strip of land between the Buxton and Jed Rivers, and consists principally of sandhills. The improvements comprise a small hut, and fences on road boundary.

RESERVE No. 3145, CANTERBURY LAND DISTRICT.

Situated in Block V., Cheviot Survey District. Area, 5 acres.

This domain is under the control of the Commissioner of Crown Lands, Christchurch, and is used for picnics. It comprises a gully of native bush, and is leased to the owner of the adjoining property, who is required to protect it. He is doing so effectually.

RESERVE No. 3146, CANTERBURY LAND DISTRICT.

Situated in Block VII., Cheviot Survey District. Area, 109 acres.

This domain is under the control of the Commissioner of Crown Lands, Christchurch, and is leased for grazing purposes. It was originally set aside for the protection of wild-fowl, which formerly frequented it in large numbers. There is a lagoon on the area.

RESERVES Nos. 3148 AND 3149, CANTERBURY LAND DISTRICT.

Situated in Block XI., Cheviot Survey District. Area, 35 acres 2 roods.

This domain is under the control of the Commissioner of Crown Lands, Christchurch. It is in its natural state, and contains a few native trees. Used for picnics.

RESERVE No. 3150, CANTERBURY LAND DISTRICT.

Situated in Block IX., Cheviot Survey District. Area, 6 acres.

This domain is under the control of the Commissioner of Crown Lands, Christchurch. It is used for scenic purposes, and leased for grazing.

RESERVE No. 3157, CANTERBURY LAND DISTRICT.

Block IV., Cheviot Survey District. Area, 5 acres.

This domain is under the control of the Commissioner of Crown Lands, Christchurch. It is fenced, and used for grazing purposes.

RESERVE No. 3158, CANTERBURY LAND DISTRICT.

Situated in Block XVI., Lowry Peaks Survey District. Area, 10 acres 2 roods 7 perches.

This domain is under the control of the Commissioner of Crown Lands, Christchurch. It comprises low-lying and wet land, is fenced, and used for grazing.

SANDY POINT DOMAIN, SOUTHLAND LAND DISTRICT.

Situated at the entrance of New River Estuary, New River Hundred. Area, 5,600 acres.

This domain consists mostly of sandy waste. It is leased, and the revenue derived is expended in planting marram-grass. About 300 acres of grass has been sown and trees planted.

SCARBOROUGH DOMAIN, HAWKE'S BAY LAND DISTRICT.

Suburban Section No. 51, Town of Scarborough. Area, 12 acres and 30 perches.

Work done during year: Planting willows and wattles. Used for picnics, &c. Proposed operations for ensuing year: Ploughing, and forming cricket and football grounds, and further tree-planting.

SCOTSBURN DOMAIN, CANTERBURY LAND DISTRICT.

Reserve No. 1554, Orari Survey District. Area, 50 acres.

Leased on improvement conditions. Work done during year: Gorse-grubbing and general maintenance. Improvements now on domain: Boundary-fences and plantation of 10 acres. It is proposed to bring in water by races during the ensuing year. The domain is not well situated for a recreation-ground.

SEDDON DOMAIN, MARLBOROUGH LAND DISTRICT.

Section No. 9, Block VII., Town of Seddon. Area, 13 acres 2 roods 3 perches.

Improvements now on domain: Plantation and fences. Used for picnics, sports, cricket, and football. Proposed operations for ensuing year: Tree-planting.

SEFTON DOMAIN, CANTERBURY LAND DISTRICT.

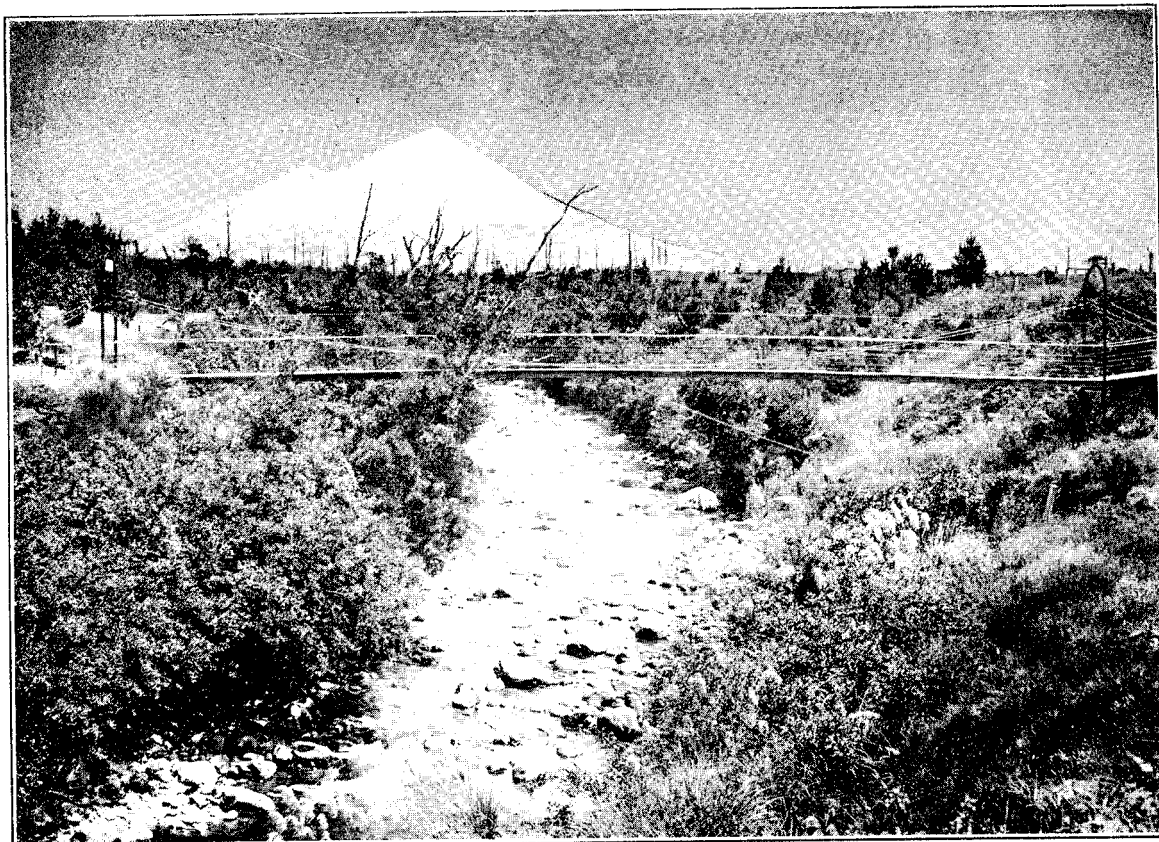
Parts of Sections Nos. 3135 and 6675, Block IV., Rangiora Survey District. Area, 14 acres 2 roods 16 perches.

Work done during year: Repairs and maintenance. Improvements now on domain: Boundary-fences and belt of trees, tennis-court, grandstand, seats, flag-pole, pump, and conveniences. Used for cricket, tennis, and picnics. Proposed operations for ensuing year: Erection of pavilion.

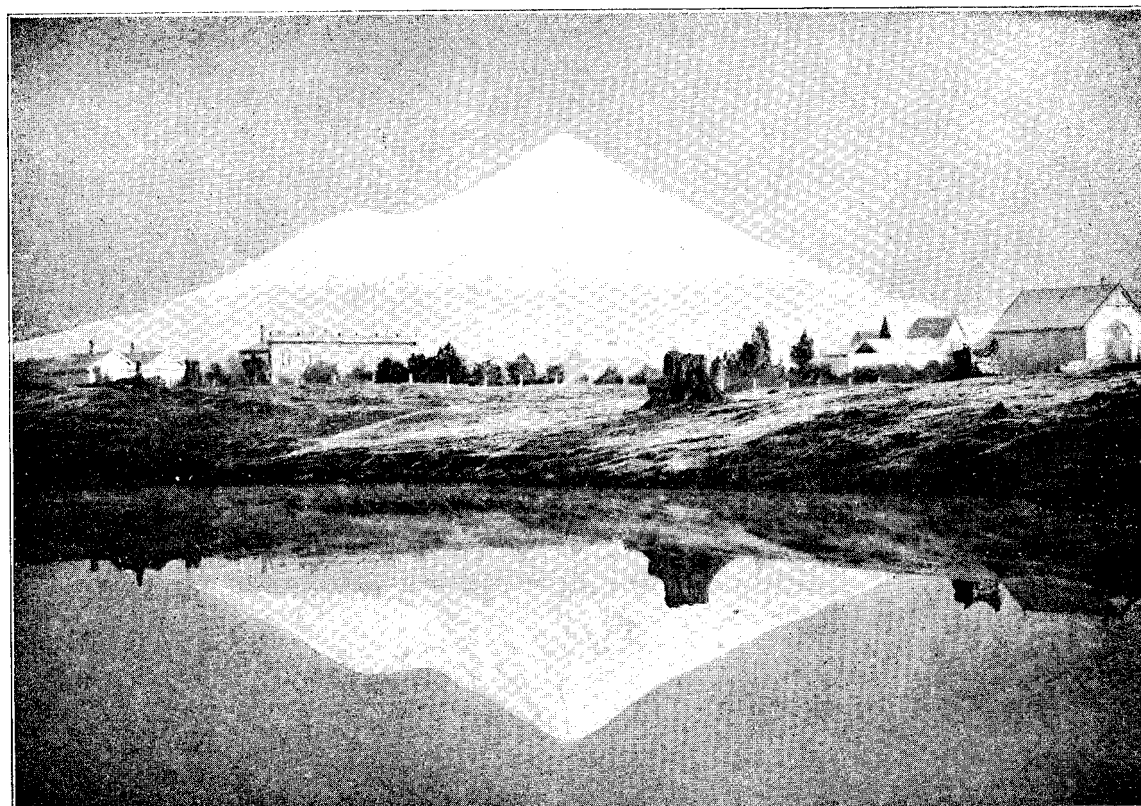
SHEFFIELD DOMAIN, CANTERBURY LAND DISTRICT.

Reserve No. 2377, Block XIII., Oxford Survey District. Area, 20 acres.

Work done during the year: Erection of new boundary-fences. Some trees were blown down and were removed. Improvements now on domain: Boundary-fences, pavilion, half-mile trotting and running-track, judge's box, seats, and plantation. Used for sports, cricket, football, hockey, picnics, and trotting-races. Proposed operations for ensuing year: Improvements to trotting-track, trimming hedges, topping trees, and formation of ground for ladies' hockey club.



STRAFFORD DOMAIN, TARANAKI



McAllister photo.

STRAFFORD DOMAIN, TARANAKI

SOUTH INVERCARGILL DOMAIN, SOUTHLAND LAND DISTRICT.

Section No. 33A, Block I., Town of Seaward Bush. Area, 2 acres 2 roods 35 perches. This area is not used by the public. It is partly fenced.

SOUTH RAKAIA DOMAIN, CANTERBURY LAND DISTRICT.

Reserve No. 2442, Town of South Rakaia. Area, 50 acres.

Work done during year: Construction of running-track, culvert, and general maintenance. Improvements now on domain: Boundary-fences, well and pump, horse-yard, swimming-pond, two dressing-sheds, building, concrete cricket-pitch, racecourse, running-track, rustic seats, and 130 acres plantation. Used for sports, picnics, races, swimming, cricket, hockey, football, and general recreation. Proposed operations for ensuing year: Erection of fences and seats, extension of running-track, deepening swimming-pool, tree-planting, reforming racecourse, and general maintenance.

SPREYDON AND HALSWELL DOMAIN, CANTERBURY LAND DISTRICT.

Reserve No. 110, Christchurch Survey District. Area, 20 acres.

Work done during year: Tree-planting and erection of fences. Improvements now on domain: Fences, plantations, and two artesian wells. Used for general recreation. Proposed operations for ensuing year: Further tree-planting and erection of fences, and general maintenance.

SPRINGSTON DOMAIN, CANTERBURY LAND DISTRICT.

Reserve No. 2362, Leeston Survey District. Area, 10 acres.

Improvements now on domain: Fences and asphalt tennis-court. Used for cricket, tennis, picnics, and general recreation. Proposed operations for ensuing year: Tree-planting.

ST. ANDREW'S DOMAIN, CANTERBURY LAND DISTRICT.

Reserve No. 634, Otaio and Patiti Survey Districts. Area, 24 acres and 12 perches.

Work done during year: Erection of pavilion, tree-planting, and general maintenance. Improvements now on domain: One hundred and sixty chains fences, 5 chains drains, 7 acres plantation, 17 acres grass, and asphalt cricket-pitch. Used for cricket, football, picnics, and general sports.

ST. BATHAN'S DOMAIN, OTAGO LAND DISTRICT.

Section No. 25, Block II., St. Bathan's Survey District. Area, 23 acres 1 rood 5 perches.

Improvements now on domain: Fifty-five chains fences, artificial lake of $1\frac{1}{2}$ acres, and plantation. Used for sports, picnics, football, and cricket. Proposed operations for ensuing year: Maintenance only.

STRATFORD DOMAIN, TARANAKI LAND DISTRICT.

Sections Nos. 24 to 33, 36, 37, 38, 67 to 76, 79, 80, 81, 111 to 124, 150 to 163, 470 to 484, 509 to 518, 542 to 551, 574 to 581, 607 to 619, 639 to 651, 781, 858, 935, and 936, Town of Stratford, and Section No. 28, Block I., Ngaire Survey District. Area, 83 acres 1 rood 2 perches.

Work done during year: Tree-planting, and erection of fences and garden-seats. Improvements now on domain: Four miles and three-quarters fences, 10 acres plantations, grandstand, running and cycling track, suspension bridge over Patea River, seats, paths, &c. About 15 acres of the domain is in native bush. Used for football, cricket, and hockey. Aquatic sports are held on the lake in the middle of the park. Proposed operations for ensuing year: Tree-planting, erection of fences, and general maintenance.

TAIERI LAKE DOMAIN, OTAGO LAND DISTRICT.

Sections Nos. 12 and 18, Block XI., and 2, Block XII., Maniototo Survey District. Area, 430 acres 3 roods.

Improvements now on domain: Fences and plantation. Proposed operations for ensuing year: Erection of fences on river-bank.

TAIHAPE DOMAIN, WELLINGTON LAND DISTRICT.

Suburban Sections Nos. 35, 38, 39, 40, 41, 42, 43, and 44, and Block X., Town of Taihape. Area, 107 acres 1 rood 7 perches.

With the exception of Block X., containing 9 acres 3 roods 24 perches, which is used as a sports-ground, this domain is in its native state—bush-clad. Block X. is cleared, fenced, and grassed, and contains a shed, dressing-room, and plantations. It is used for sports, cricket, and football. A special report on this domain was obtained during the year. It is very necessary that the bush-clad areas should be fenced, but the Board has not sufficient funds to undertake the work.

TAKAHANGA DOMAIN, MARLBOROUGH LAND DISTRICT.

Section No. 410, Town of Kaikoura. Area, 19 acres 2 roods 24 perches.

Improvements now on domain: Fences, plantations, and tennis-courts. Used for cricket, football, tennis, and athletic sports. Proposed operations for ensuing year: Formation of running-track, and tree-planting.

TAKAPUNA DOMAIN, AUCKLAND LAND DISTRICT.

Section No. 250, Takapuna Parish. Area, 180 acres 2 roods.

Improvements now on domain: Fences. This area comprises poor gum land, situated some miles from close settlement; its value as a recreation-ground is therefore prospective.

TANE DOMAIN, WELLINGTON LAND DISTRICT.

Sections Nos. 21 and 22, Block XVI., Mangahao Survey District. Area, 23 acres 3 roods.

Proposed operations for ensuing year: Tree-planting.

TANEATUA DOMAIN, AUCKLAND LAND DISTRICT.

Section No. 11, Block IX., Whakatane Survey District. Area, 10 acres.

This domain is not used, and no improvements have been effected. It is proposed to offer the area for lease.

TANGIHUA DOMAIN, AUCKLAND LAND DISTRICT.

Section No. 33, Block II., Tangihua Survey District. Area, 65 acres.

No improvements effected. It is proposed to lease the area on improvement conditions.

TARATA DOMAIN, TARANAKI LAND DISTRICT.

Section No. 58, Tarata Village. Area, 8 acres 2 roods.

Work done during year: Hedge-trimming, and repairs to fences. Improvements now on domain: Sheep-proof fences, tennis-courts, plantation, and building. Used for sports, lawn tennis, and picnics. Proposed operations for ensuing year: Formation of running-track, and willow-planting along river-bank.

TAUHOA DOMAIN, AUCKLAND LAND DISTRICT.

Sections Nos. 145, 146, and 148, Tauhoa Parish. Area, 92 acres 2 roods 10 perches.

Leased on improvement conditions. Work done during year: Ploughing, fencing, and grassing. Not used by the public. Proposed operations for ensuing year: Further ploughing and grassing.

TAUMATA DOMAIN, TARANAKI LAND DISTRICT.

Subdivisions Nos. 1 of Section No. 12, and 6 of Section No. 75, Block X., Ngairi Survey District. Area, 12 acres 1 rood 5.3 perches.

Work done during year: Tree-planting, erection of picket fence, and maintenance. Improvements now on domain: Fences, sheds, grandstand, and plantations. Used for sports and picnics. Proposed operations for ensuing year: Erection of new grandstand and dressing-sheds, and alteration and improvement to sports-ground.

TAUPIRI DOMAIN, AUCKLAND LAND DISTRICT.

Sections Nos. 78 to 87, Town of Taupiri. Area, 4 acres 2 roods 37 perches.

Improvements now on domain: Fences, plantation, and small pavilion. Used for tennis, cricket, picnics, and general recreation.

TAUPO DOMAIN, AUCKLAND LAND DISTRICT.

Sections Nos. 2 and 4, Block II., Tauhara Survey District, and part of the area in Taupo Township known as Taupo Recreation-ground. Area, 27 acres and 26 perches.

Improvements now on domain: Fences, hedges, plantations, paths, and rose-beds. Used for picnics and general recreation. Proposed operations for ensuing year: Formation of lawn-tennis courts.

TAURANGA DOMAIN, AUCKLAND LAND DISTRICT.

Allotments Nos. 273 and 393, Section No. 1 Town of Tauranga. Area, 15 acres 3 roods 21 perches.

Work done during year: Eradication of noxious weeds, willow-planting, and maintenance. Improvements now on domain: Band-rotunda and football-shed. Used for football, golf, and general athletic sports. Proposed operations for ensuing year: Repainting band-rotunda, and erection of pavilion.

TAURANGA RACECOURSE DOMAIN, AUCKLAND LAND DISTRICT.

Sections Nos. 22, 23, 24, and 25, Te Papa Parish. Area, 200 acres.

Leased on improvement conditions. Work done during year: Tree-planting and erection of fences. Improvements now on domain: Fences, saddling-paddock, and building used as booth and stewards' room. Used for races and sports. Proposed operations for ensuing year: Further tree-planting and erection of fences.

TE ANA DOMAIN, SOUTHLAND LAND DISTRICT.

Section No. 48, Block VII., Waiau Survey District. Area, 2 acres and 29 perches.

This domain is under the control of the Tourist Department. It contains some caves, and is used as a scenic reserve.

TE AROHA HOT SPRINGS DOMAIN, AUCKLAND LAND DISTRICT.

Sections Nos. 15 and 16, Block IX., Aroha Survey District. Area, 66 acres.

This domain is under the control of the Tourist Department. During the year improvements have been effected to the grounds and buildings. The domain now contains houses, fences, croquet and tennis lawns, bowling-green, flower-beds, and baths, and is used as a health and pleasure resort.

TE AWAMUTU DOMAIN, AUCKLAND LAND DISTRICT.

Sections Nos. 20, 21, 23, 24, and 25, Town of Te Awamutu. Area, 18 acres and 11 perches.

Leased on improvement conditions. Improvements now on domain: Forty chains fences, grassing, and plantation of ornamental trees. Not used by the public.

TEMPLETON DOMAIN, CANTERBURY LAND DISTRICT.

Reserves Nos. 2351 and 2418, Christchurch Survey District. Area, 229 acres.

Work done during year: Erection of fences. Improvements now on domain: Fences and plantation. Used for cricket, picnics, and sports. Proposed operations for ensuing year: Gorse-grubbing, erection of fences, and general maintenance.

TEMUKA DOMAIN, CANTERBURY LAND DISTRICT.

Reserves Nos. 307, Town of Arowhenua, and 1561, Opihi Survey District. Area, 183 acres.

Work done during year: New entrance formed, and Troopers' Memorial Gate erected, trees planted, fences erected, 197 cords of firewood cut, and cycling-track improved. Improvements now on domain: Boundary-fences with gorse hedges, six iron wicket gates, four double gates for vehicles (one of wood and three of iron), caretaker's cottage, pavilion, shed, cloak-room, and conveniences, two tennis-courts, cycling-track of asphalt, and 25 acres plantation. Used for picnics, sports, and general recreation. Proposed operations for ensuing year: Maintenance.

TE NGUTU O TE MANU DOMAIN, TARANAKI LAND DISTRICT.

Section No. 40, Block XVI., Kaupokonui Survey District. Area, 50 acres.

Work done during year: Erection of iron picket fences in concrete foundation around Von Tempsky's Monument, large gate, turnstile, 4 chains wire fencing. Improvements now on domain: Thirty-four chains hedges, 25 chains sheep-proof fences, caretaker's cottage, seats, large iron gates, one wooden gate, three small gates, turnstile, dam and pond, plantation, monument, and 4 acres native bush. Proposed operations for ensuing year: Painting and varnishing monument, painting cottage and gates, and tree-planting.

TE PUKE DOMAIN, AUCKLAND LAND DISTRICT.

Section No. 50, Block II., Maketu Survey District. Area, 13 acres 3 roods 4 perches.

Work done during year: Gorse-grubbing, and repairs to fences. Improvements now on domain: Fences, three tennis-courts, and belt of trees around boundary. Used for Volunteer camps, sports, and cricket.

TIMARU DOMAIN, CANTERBURY LAND DISTRICT.

Part of Reserve No. 102, Suburbs of Timaru. Area, 8 acres 1 rood 18 perches.

Leased to South Canterbury Caledonian Society. Improvements now on domain: Iron fence on three sides, plantation, oval sports-ground, bicycle-track, caretaker's cottage, enclosures, &c. Used for sports and band contests. Proposed operations for ensuing year: Erection of grandstand.

TINWALD DOMAIN, CANTERBURY LAND DISTRICT.

Reserve No. 350, Block XVI., Westerfield Survey District. Area, 230 acres.

Work done during year: Improvement to intake of lake, construction of fords across water-race, eradication of noxious weeds, and tree-planting. Some ducks and swans were placed on the lake during the year. Improvements now on domain: Fences, drain, grandstand, booth, offices, and plantations. Used for sports, picnics and races. Proposed operations for ensuing year: Removal of *Pinus insignis* trees, and planting exotic trees, erection of building on cricket-ground, re-forming of drives, erection of fences, and further eradication of noxious weeds.

TOKANUI DOMAIN, SOUTHLAND LAND DISTRICT.

Section No. 15, Block II., Town of Tokanui. Area, 3 acres 1 rood 4 perches.

No improvements effected. It is proposed to fence the area and lease it on improvement conditions.

TOKOMAIRIRO DOMAIN, OTAGO LAND DISTRICT.

Parts of Sections Nos. 103 and 104, Block XII., Tokomairiro Survey District. Area, 59 acres 2 roods 30 perches.

Improvements now on domain: Plantations, pavilion, fences, and drains. Used for football, cricket, picnics, and general recreation. Proposed operations for ensuing year: Tree-planting and construction of drains.

TOTARA DOMAIN, AUCKLAND LAND DISTRICT.

Section No. 15, Totara Parish. Area, 4 acres 1 rood 5 perches.

Improvements now on domain: Drains and cricket-ground. Used for sports, mostly cricket.

TROTTER'S CREEK DOMAIN, OTAGO LAND DISTRICT.

Section No. 36, Block XI., Moeraki Survey District. Area, 183 acres and 11 perches.

Work done during year: Scrub-clearing, erection of rustic seats, willow-planting, and maintenance. Improvements now on domain: Eighty chains tracks, rustic seats, and bridge. The open portion of the domain is used for sports, picnics, and camping.

TUAKAU DOMAIN, AUCKLAND LAND DISTRICT.

Section No. 45, Tuakau Parish. Area, 36 acres 3 roods.

Improvements now on domain: Fences, plantation, and grassing. Used for sports, picnics, and races. Proposed operations for ensuing year: Tree-planting, erection of fences, and general maintenance.

TUAPEKA DOMAIN, OTAGO LAND DISTRICT.

Blocks XV., XVI., XVIII., XIX., XXXV., Sections Nos. 1 to 8, 10 and 13 to 16, Block XIV., 1 to 7 and 20, Block XVII., 1 to 6, and 17 and 18, Block XXXIV., 6, Block LIII., 3, 4, and 5, Block LIV., and three areas, containing 1 rood, 2 roods 35 perches, and 3 roods 24 perches respectively, Town of Lawrence, and Sections Nos. 20 and 30, Block XIX., Tuapeka East Survey District. Area, 128 acres and 26 perches.

Used for cricket, football, agricultural shows, and race-meetings.

TUPUA DOMAIN, AUCKLAND LAND DISTRICT.

Section No. 119, Whangarei Parish. Area, 10 acres.

Improvements now on domain: Fences and grass. Not used by the public. Leased for grazing purposes.

TURANGA DOMAIN, AUCKLAND LAND DISTRICT.

Wade's Island, Section No. 133, Pakuranga Parish. Area, 26 acres.

This domain is not suited for recreation purposes. It is an island in Turanga Creek, and is occasionally covered by salt water, which prevents the growth of trees.

TUTAEKARA DOMAIN, WELLINGTON LAND DISTRICT.

Section No. 49, Block XIV., Mangahao Survey District. Area, 9 acres 2 roods 14 perches.

Nil report furnished.

UAWA DOMAIN, HAWKE'S BAY LAND DISTRICT.

Block III., Town of Buckley. Area, 25 acres and 32 perches.

Work done during year: Building completed. Improvements now on domain: Ring fences, 5 acres fenced off for recreation purposes, building (24 ft. by 9 ft.), well, and pump. Used for cricket, football, and picnics. Proposed operations for ensuing year: Tree-planting.

URENUI DOMAIN, TARANAKI LAND DISTRICT.

Section No. 12, Block III., Waitara Survey District. Area, 57 acres.

Improvements now on domain: Fences and plantations. Used for sports and picnics. Proposed operations for ensuing year: Erection of fences, further draining of swamp, and planting waste sands.

URUTI DOMAIN, TARANAKI LAND DISTRICT.

Section No. 8, Block II., Upper Waitara Survey District. Area, 10 acres 3 roods 16 perches.

No improvements effected. It is proposed to fence the domain during the coming year if funds are available.

VICTORIA DOMAIN, HAWKE'S BAY LAND DISTRICT.

Section No. 42, Block X., Woodville Survey District. Area, 23 acres 3 roods 10 perches.

Work done during year: Hedge and tree-trimming. Improvements now on domain: Clearing and grassing, 5 acres stumped and ploughed, fences, drains, plantations, and hedges. Proposed operations for ensuing year: Maintenance, and further construction of drains.

WAIU DOMAIN, CANTERBURY LAND DISTRICT.

Section No. 1, Block XIII., Waiu Survey District. Area, 40 acres.

Work done during year: Eradication of blackberries and briars. Improvements now on domain: Fences. Used for football, picnics, and sports. Proposed operations for ensuing year: Tree-planting; clearing, levelling, and fencing football-ground; and further eradication of blackberries and briars.

WAIHEMO DOMAIN, OTAGO LAND DISTRICT.

Section No. 74, Block IV., Moeraki Survey District. Area, 129 acres 2 roods 26 perches.

Work done during year: Eradication of noxious weeds, erection of fences, and maintenance. Improvements now on domain: Boundary and subdivisional fences. Used for picnics on rare occasions.

WAIHI DOMAIN, AUCKLAND LAND DISTRICT.

Section No. 4, Block IV., Aroha Survey District. Area, 120 acres.

Work done during year: Fences erected on three sides, latrines built, and trees planted. The operations for the ensuing year have not been decided on.

WAIHORA PARK DOMAIN, CANTERBURY LAND DISTRICT.

Reserve No. 2585, Block XIV., Halswell Survey District. Area, 200 acres.

Work done during year: Erection of fences, ploughing, harrowing, tree-planting, and general maintenance. The domain is now very attractive, and a large number of picnics are held in it. Used for sports, picnics, and general recreation. Proposed operations for ensuing year: Extension of water-supply and general maintenance. It is proposed to grow trees to fill vacancies in the plantations and for sale. Lawn-mowers will be purchased to keep the grass in trim. The whole area is surrounded with belts of trees from 1 to 2 chains in width.

WAIHOU DOMAIN, AUCKLAND LAND DISTRICT.

Sections Nos. 113, Block IX., and 8, Block XI., Te Aroha Survey District. Area, 107 acres 1 rood.

Work done during year: New drains constructed and old ones deepened. Improvements now on domain: Substantial boundary-fences, grassing, and plantation. Used for agricultural and pastoral shows, football, cricket, and cycling. Proposed operations for ensuing year: Further tree-planting, and construction of drains if funds available.

WAI-ITI DOMAIN, NELSON LAND DISTRICT.

Section No. 156, Block XV., Wai-iti Survey District. Area, 6 acres.

Work done during year: Ornamental trees planted and protected with wire fences. Improvements now on domain: Fences and plantations. Used for picnics, and as a pleasure resort. Proposed operations for ensuing year: Tree-planting, clearing, levelling, and general maintenance. The domain is pleasantly situated and well sheltered, and is admirably adapted for public recreation. It is, however, in a very rough state.

WAIKAIA DOMAIN, SOUTHLAND LAND DISTRICT.

Block IV., Town of Waikaia. Area, 5 acres 2 roods.

Improvements now on domain: Good fences. Used for cricket, tennis, football, and sports. Proposed operations for ensuing year: Tree-planting, erection of gate, and formation of bicycle-track.

WAIKIEKIE DOMAIN, AUCKLAND LAND DISTRICT.

Section No. 49, Waikiekie Parish. Area, 60 acres.

This domain consists of broken land covered with native bush. It contains the remains of a Maori pa.

WAIKUKU DOMAIN, CANTERBURY LAND DISTRICT.

Reserve No. 3224, Block VIII., Rangiora Survey District. Area, 80 acres.

Work done during year: One thousand trees planted; also a considerable quantity of marram-grass, fences repaired, drains cleaned, and portions of ground levelled. Improvements now on domain: Fences, plantation, artesian well, and drinking-trough for horses. Used for picnics. Proposed operations for ensuing year: Further planting of trees and marram-grass.

WAINUI DOMAIN, CANTERBURY LAND DISTRICT.

Section No. 727, Block VII., Akaroa Survey District. Area, 2 acres.

Work done during year: Ploughing and erection of boundary fences. The area has been leased for the purpose of having one crop taken off. Improvements now on domain: Fences and drains. Proposed operations for ensuing year: Levelling, ploughing, and grassing, if funds available.

WAIONE DOMAIN, WELLINGTON LAND DISTRICT.

Section No. 14, Block III., Mount Cerberus Survey District. Area, 6 acres.

Improvements now on domain: Fences and grass. Not used by the public.

WAIOPEHU DOMAIN, WELLINGTON LAND DISTRICT.

Section No. 43, Block II., Waiopehu Survey District. Area, 16 acres 2 roods.

This domain is fenced on three sides. It is all in native bush.

WAIPAWA DOMAIN, HAWKE'S BAY LAND DISTRICT.

Situated in Block XI., Waipukurau Survey District. Area, 51 acres.

Work done during year: Maintenance. Improvements now on domain: Fences, plantation, flower-beds, walks, and dam. Used for picnics, band concerts, and as a park.

WAIPUKU DOMAIN, AUCKLAND LAND DISTRICT.

Sections No. 45, 47, 49, and 51, Waipuku Village. Area, 2 acres and 12 perches

Improvements now on domain: Fences. Used for grazing only.

WAIROA DOMAIN, WELLINGTON LAND DISTRICT.

Runs Nos. 2, 3, and 4, Block XI., Wairoa Survey District. Area, 229 acres 2 roods.

Improvements now on domain: Plantations and fences. Used for fishing, shooting, bathing, camping out, and picnics. Proposed operations for ensuing year: Additions to plantations.

WAITAKEREI DOMAIN, AUCKLAND LAND DISTRICT.

Sections Nos. 16, 18, 19, E. 64, 65, S. 68, S.E. 75, S. 78, S. 79, 110, 111, and S. 112, Karangahape Parish; N. 54, Block V., Waitakerei Survey District, 163 and 193, Waipareira Parish. Area, 4,732 acres.

Work done during year: Tracks cut, fireplaces made for convenience of picnic parties, and notice-boards erected. Used for picnics and the preservation of native bush.

WAITAKI NORTH DOMAIN, CANTERBURY LAND DISTRICT.

Reserve No. 2915, Block XIV., Waitaki Survey District. Area, 57 acres.

Work done during year: Erection of windmill and pump. Improvements now on domain: Fences, well, trough, plantations, windmill and pump. Used for grazing purposes.

WAITOTARA DOMAIN, WELLINGTON LAND DISTRICT.

Sections Nos. 154, 155, and 156, Town of Waitotara. Area, 3 roods.

Partly fenced; not used by the public.

WAIUKU DOMAIN, AUCKLAND LAND DISTRICT.

Section No. 73, Waiuku Village. Area, 10 acres.

Work done during year: Eradication of noxious weeds, and 8 acres cropped. Improvements now on domain: Fences, drains, and plantations. Not used by the public.

WAIWERA DOMAIN, AUCKLAND LAND DISTRICT.

Sections Nos. 168, 169, 170, and 171, Waiwera Parish. Area, 12 acres 2 roods 9 perches.

No improvements effected. Not used by the public. It is proposed to lease the area on improvement conditions.

WAKEFIELD DOMAIN, NELSON LAND DISTRICT.

Section No. 79B (Waimea South Original District), Block XVI., Wai-iti Survey District, and part of Section No. 85 (Waimea South Original District), Block XII., Wai-iti Survey District. Area, 81 acres 1 rood 8 perches.

Four acres and a half is leased, and the money received is expended in paying the rent on a privately owned area, that is used for recreation purposes. The balance is not suitable for a domain, and the Board wishes to relinquish control of it. Efforts to find a tenant for the larger area have proved unsuccessful.

WANAKA ISLANDS DOMAIN, OTAGO LAND DISTRICT.

Manukau or Pigeon Island, Crescent or Rabbit Island, the island in Stevenson's Arm, and Merino or Roy's Island, all in Lake Wanaka; Sections Nos. 1, Block XIII., and 29, Block XIV., Lower Wanaka Survey District, and Sections Nos. 1 to 4, Block XIV., 1 to 3, Block XV., 1 to 6 and 8 to 14, Block XVI., and 1 to 16, Block XVII., Town of Pembroke. Area, 1,007 acres 2 roods 30 perches.

Four hundred acres leased on improvement conditions. Work done during year: Tree and marram-grass planting. Improvements now on domain: One hundred and forty chains fences, 50 acres plantations, and wharf on Manukau Island. Used for athletic sports, picnics, sanctuary for birds and animals (native and foreign), growth of shrubs and trees for its adornment and as an educative factor, and generally for the gratification of the taste of lovers of the beautiful who visit Wanaka district. Proposed operations for ensuing year: Extension of Manukau Island wharf, formation and improvement of tracks, tree-planting, and suppression of sand nuisance.

WANGALOA DOMAIN, OTAGO LAND DISTRICT.

Part of Section No. 8, Block VII., Coast Survey District. Area, 32 acres 3 roods 13 perches.

Work done during year: Gate and 14 chains fences erected. Improvements now on domain: Eighty-nine chains fences, 82 chains drains, and plantations. Used for picnics and sports. Proposed operations for ensuing year: Further tree-planting, clearing swamp, and further construction of drains.

WANGANUI RIVER TRUST DOMAIN, WELLINGTON LAND DISTRICT.

Situated on the banks of the Wanganui River. Area, 33,033 acres.

Used for scenic and climatic purposes.

WAREA DOMAIN, TARANAKI LAND DISTRICT.

Section No. 71, Block VIII., Cape Survey District. Area, 26 acres.

Work done during year: Improvement to entrances. Improvements now on domain: Fences, drains, plantations, and grass. Used for sports and picnics. Proposed operations for ensuing year: Erection of a shed.

WAVERLEY DOMAIN, WELLINGTON LAND DISTRICT.

Part of Waverley Town Belt. Area, 126 acres 3 roods 9 perches.

Work done during year: Pavilion on tennis-ground completed, windmill with piping and tanks erected, bathroom added to dressing-rooms, and new fences and gates erected. Improvements now on domain: Miles of fences, numerous gates, dressing-rooms, conveniences, ticket-office, bath-rooms, tool-shed, bowling club's pavilion and store-room, tennis club's pavilion and machine-room, windmill, tanks, and pipes for watering green. Used for tennis, bowling, cricket, football, athletic sports, and picnics. Proposed operations for ensuing year: Tree-planting and maintenance.

WEBER DOMAIN, HAWKE'S BAY LAND DISTRICT.

Section No. 51, Block V., Weber Survey District. Area, 10 acres and 32 perches.

Improvements now on domain: Stumping, clearing, and track. Used for sports. Proposed operations for ensuing year: Improvement to track.

WEEDON DOMAIN, CANTERBURY LAND DISTRICT.

Reserve No. 1596, Block XV., Rolleston Survey District. Area, 48 acres 2 roods 17 perches.

Improvements now on domain: Fences, bathing-shed, bathing-pond, plantation, and cricket-ground. Used for cricket, picnics, and bathing. Proposed operations for ensuing year: Eradication of noxious weeds, and maintenance.

WEST MELTON DOMAIN, CANTERBURY LAND DISTRICT.

Reserve No. 1564, Rolleston Survey District. Area, 20 acres.

Improvements now on domain: Surrounded by belt of trees, and sown in grass. Used occasionally for picnics, sports, and Volunteer camps. Proposed operations for ensuing year: Renewal of fences. The domain is situated rather far away from the township.

WESTPORT DOMAIN, NELSON LAND DISTRICT.

Sections Nos. 986, 987, 1020, 1021, and 1022, Town of Westport; and 12 acres 2 roods 30 perches in Block III., Kawatiri Survey District. Area, 60 acres 3 roods 36 perches.

Improvements now on domain: Three acres and a half (Victoria Square) cleared, fences, and shed. Used for football, cricket, tennis, and bowling. Proposed operations for ensuing year: Erection of buildings and fences, and general improvement. A special loan of £2,200 has been raised for this purpose.

WHAINGAROA DOMAIN, AUCKLAND LAND DISTRICT.

Sections Nos. 86 and 86A, Waipa Parish, and 139, Whaingaroa Parish. Area, 364 acres and 21 perches.

Improvements now on domain: House of twenty rooms, fences, outbuildings, plantations, orchard, ladies' bath, men's bath (concrete), and tennis-court. Used as a health resort. It is proposed to improve the mineral baths as soon as funds permit.

WHAKATANE DOMAIN, AUCKLAND LAND DISTRICT.

Sections Nos. 285 and 286, Waimana Parish. Area, 40 acres 2 roods 18 perches.

Work done during year: Formation of cricket-pitch. Improvements now on domain: Fences, grass, plantation, tennis-lawn, and cricket-ground. Used for cricket, football, and tennis.

WHANGATEAU DOMAIN, AUCKLAND LAND DISTRICT.

Section No. 156A, Omaha Parish. Area, 15 acres and 20 perches.

Work done during year: Erection of tank, repairs to hall, 2 acres ploughed and grassed, and general maintenance. Improvements now on domain: Boundary-fences, entrance-gates, tennis-court, concrete cricket-pitch, hall, and plantation. Most of the area is in grass, and there is 2 acres of native bush. Used for picnics, athletic sports, tennis, and cricket. Proposed operations for ensuing year: Further improvements to hall.

WHETUKURA DOMAIN, HAWKE'S BAY LAND DISTRICT.

Section No. 35, Whetukura Village. Area, 8 acres 1 rood.

Leased on improvement conditions. During the year the area was ploughed, harrowed, and cropped. Improvements now on domain: Good fences. Proposed operations for ensuing year: Tree-planting and erection of fences.

WILLSHER DOMAIN, OTAGO LAND DISTRICT.

Sections Nos. 1, 3, and 4 of 16, and an intersecting road-line, Block VII., South Molyneux Survey District. Area, 14 acres and 39 perches.

Work done during year: Ploughing, construction of drains, and erection of seats and latrines. Improvements now on domain: Fences, seats, drains, and conveniences. Used for sports and picnics. Proposed operations for ensuing year: Tree-planting, ploughing, levelling, and grassing.

WINCHESTER DOMAIN, CANTERBURY LAND DISTRICT.

Reserve No. 2402, Block XIV., Geraldine Survey District. Area, 30 acres.

Improvements now on domain: Belt of trees, fences, plantations, windmill and pump, and stone tablet with brass plate in commemoration of Her late Majesty's Jubilee. Used as a promenade and recreation-ground. Proposed operations for ensuing year: Maintenance.

WINCHESTER CRICKET AND OTHER SPORTS DOMAIN, CANTERBURY LAND DISTRICT.

Reserve No. 2449, Block, XIV., Geraldine Survey District. Area, 12 acres 1 rood.

Work done during year: Erection of stone and brass tablet (inscribed) at foot of oak planted to commemorate Her late Majesty's record reign. Improvements now on domain: Fences, stiles, gates, plantations, tennis-courts, football-ground, bicycle-track, substantial store, dressing-room, two oak-trees, and stone and brass tablet erected to the memory of the record reign of Her late Majesty Queen Victoria and the accession of King Edward VII. Used for general sports.

WINTON DOMAIN, SOUTHLAND LAND DISTRICT.

Sections Nos. 1 to 5, 7 to 12, 17 to 22, 24 to 28, Block IX., 1 to 5, 7 to 13, 17 to 23, and 25 to 29, Block X., Town of Winton. Area, 11 acres 2 roods.

Work done during year: Maintenance. Improvements now on domain: Fences, plantation, stumping, clearing, grassing, draining, ploughing, harrowing, and filling-in. Used for tennis, sports, and football.

WINTON TOWN BELT DOMAIN, SOUTHLAND LAND DISTRICT.

Sections Nos. 1 and 32, Block XI., 1 and 27, Block XII., 1 and 23, Block XVI., 1 and 24, Block XVII., and 1 and 24, Block XVIII., Town of Winton. Area, 2 acres 2 roods.

Not used by the public. Leased for grazing purposes.

WOODBURY DOMAIN, CANTERBURY LAND DISTRICT.

Reserve No. 2407, Hororata Survey District. Area, 100 acres.

Work done during year: Erection of 8½ chains fences, and maintenance. Improvements now on domain: Two hundred and sixty-eight chains fences, 5 acres drain-ploughed, sports-pavilion, concrete baths (45 ft. by 18 ft.), dressing-room, lavatory, asphalted tennis-court, garden-seats, and plantations. Used for sports, picnics, bathing, tennis, and general recreation. Proposed operations for ensuing year: Erection of new pavilion, repairing old one, and tree-planting.

WOODEND DOMAIN, CANTERBURY LAND DISTRICT.

Reserves Nos. 2134 and part of 94, Rangiora Survey District. Area, 144 acres and 23 perches.

Work done during year: Erection of latrines, seats, gates, and fences, and general maintenance. Improvements now on domain: Four acres and a half levelled, fences, plantations, cricket-pitch, tennis-court, seats, and conveniences. Used for sports, cricket, football, tennis, picnics, and children's playground. Proposed operations for ensuing year: Marram-grass planting, and general maintenance.

WOODVILLE DOMAIN, HAWKE'S BAY LAND DISTRICT.

Section No. 78, Block VIII., Woodville Survey District. Area, 39 acres 3 roods 19 perches.

Work done during year: Ten acres cropped. Improvements now on domain: Fences, drains, dwellinghouse, outhouses, and shelter-fences. Not used by the public. Proposed operations for ensuing year: Further planting and draining.

WYNDHAM DOMAIN, SOUTHLAND LAND DISTRICT.

Section No. 66, Block VI., Town of Wyndham. Area, 13 acres.

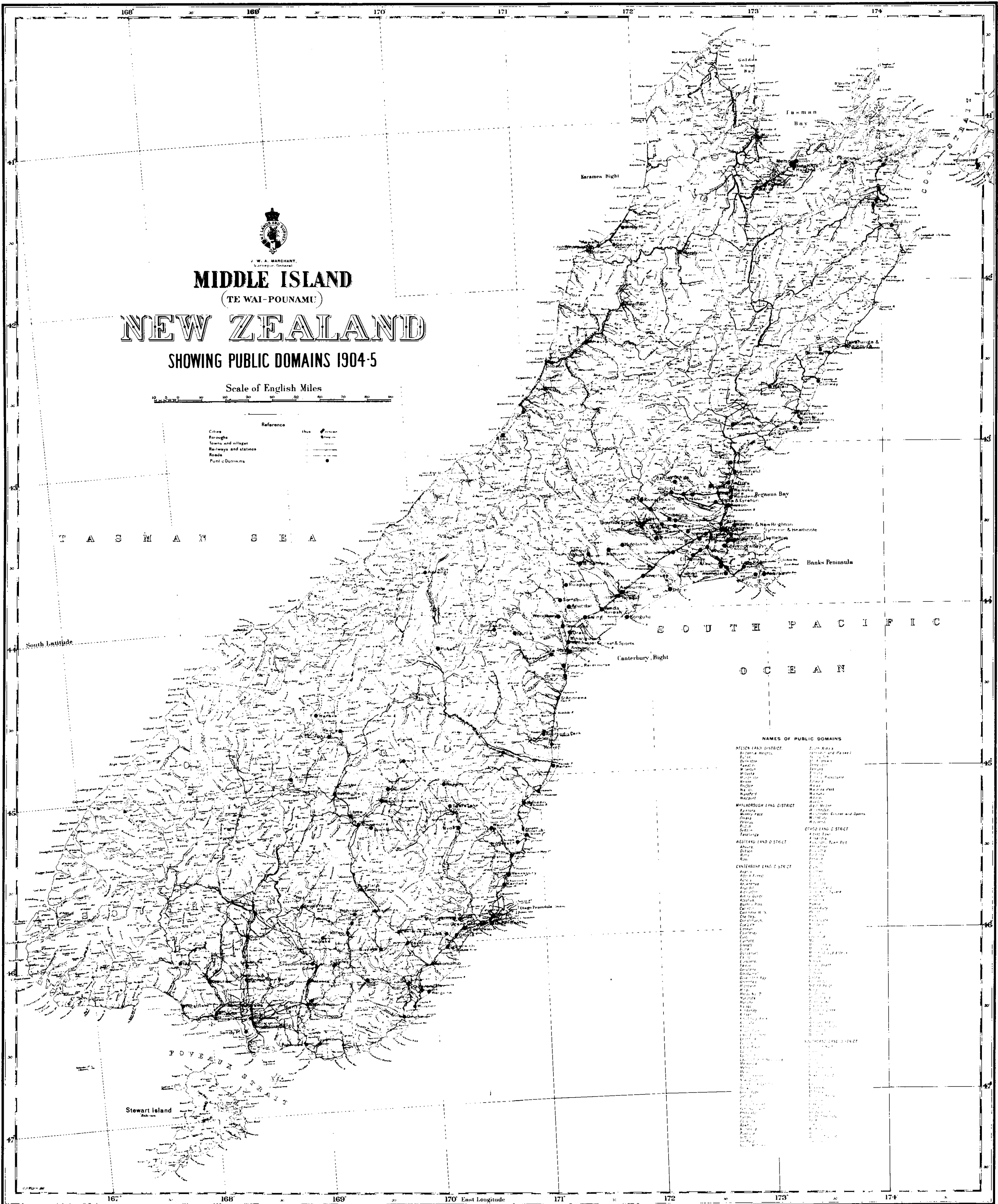
Improvements now on domain: Twenty chains of rabbit-proof fences and 6 chains drains. Used as a public resort. It is proposed to obtain the advice of an expert as to the best means of planting the area. Wild-fowl on the lagoon are protected as far as possible by the Board.

The Boards controlling the undermentioned domains have not furnished reports for the year 1904, as required by section 7 of "The Domain Boards Act, 1904": Alexandra (Pirongia). Alford Forest, Aratapu, Dorie, Epsom, Epsom and Mount Eden, Hinds No. 2, Hirstfield. Kaponga, Kauri, Kawatiri, Kopuru, Kopuru Town, Mackaytown, Mackenzie, Makaka, Manaia. Mangapiko, Manuherikia, Moeraki, Opawa, Oxford, Parnell, Picton, Pongaroa, Pukaki, Rahotu. South Malvern, Timaru Racecourse, Torere, Turakina, Utiku, Waimate, Whananaki.

Approximate Cost of Paper.—Preparation, not given; printing (1,950 copies (exclusive of plates) £16 4s.

By Authority: JOHN MACKAY, Government Printer, Wellington.—1905.

Price 1s. 6d.]



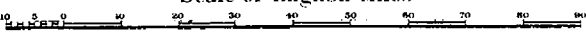
J. W. A. MARCHANT,
Surveyor General

MIDDLE ISLAND
(TE WAI-POUNAMU)

NEW ZEALAND

SHOWING PUBLIC DOMAINS 1904-5

Scale of English Miles



- Reference
- Cities
 - Boroughs
 - Towns and villages
 - Railways and stations
 - Roads
 - Public Domains

T A S M A N S E A

S O U T H P A C I F I C
O C E A N

NAMES OF PUBLIC DOMAINS

NELSON LAND DISTRICT	2000 Acres
Albion	1000 Acres
Buller	1000 Acres
Central	1000 Acres
East	1000 Acres
North	1000 Acres
South	1000 Acres
West	1000 Acres
Woodward	1000 Acres
MARLBOROUGH LAND DISTRICT	1000 Acres
Abel Tasman	1000 Acres
Albion	1000 Acres
Central	1000 Acres
East	1000 Acres
North	1000 Acres
South	1000 Acres
West	1000 Acres
Woodward	1000 Acres
WESTLAND LAND DISTRICT	1000 Acres
Abel Tasman	1000 Acres
Albion	1000 Acres
Central	1000 Acres
East	1000 Acres
North	1000 Acres
South	1000 Acres
West	1000 Acres
Woodward	1000 Acres
CANTERBURY LAND DISTRICT	1000 Acres
Abel Tasman	1000 Acres
Albion	1000 Acres
Central	1000 Acres
East	1000 Acres
North	1000 Acres
South	1000 Acres
West	1000 Acres
Woodward	1000 Acres
SOUTHLAND LAND DISTRICT	1000 Acres
Abel Tasman	1000 Acres
Albion	1000 Acres
Central	1000 Acres
East	1000 Acres
North	1000 Acres
South	1000 Acres
West	1000 Acres
Woodward	1000 Acres

