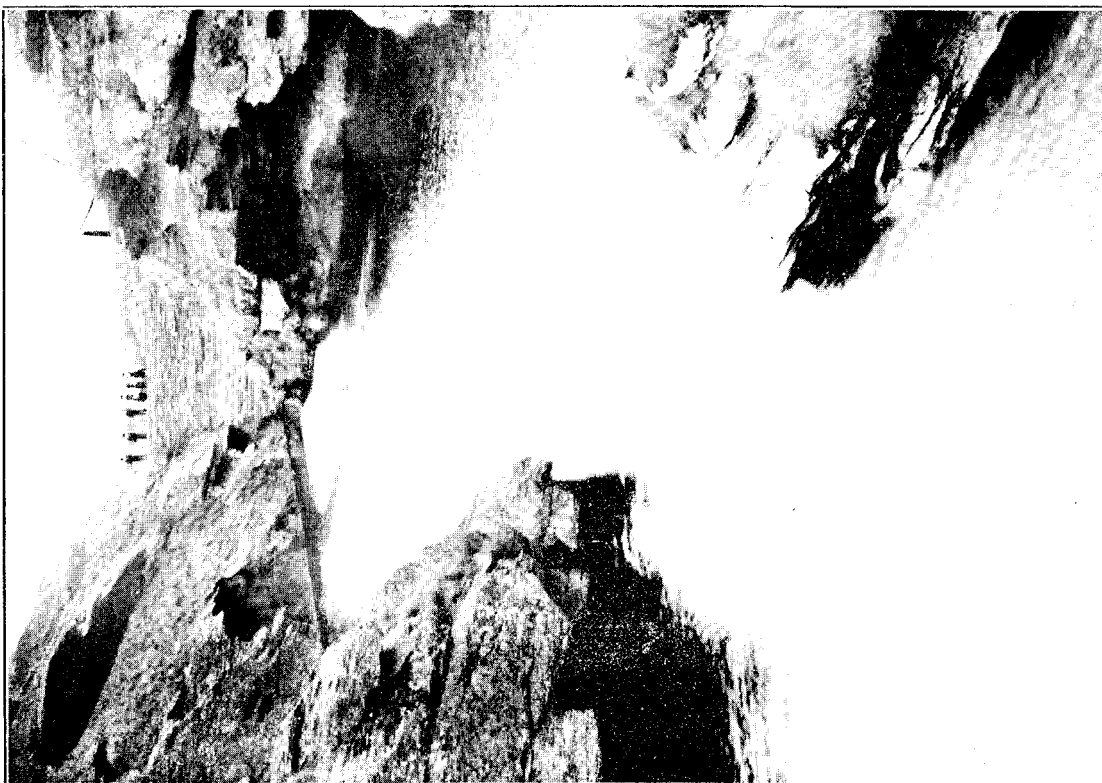


DUNSTAN LEAD DREDGE. ICICLES HANGING FROM ELEVATOR.



MR. RIVERS' DAM AT SPEARGRASS CREEK, NEAR ALEXANDRIA, IOWA.
INNER FACE OF WALL AND ACCUMULATING WATER SHOWN.

[See also Report of Inspecting Engineer.]