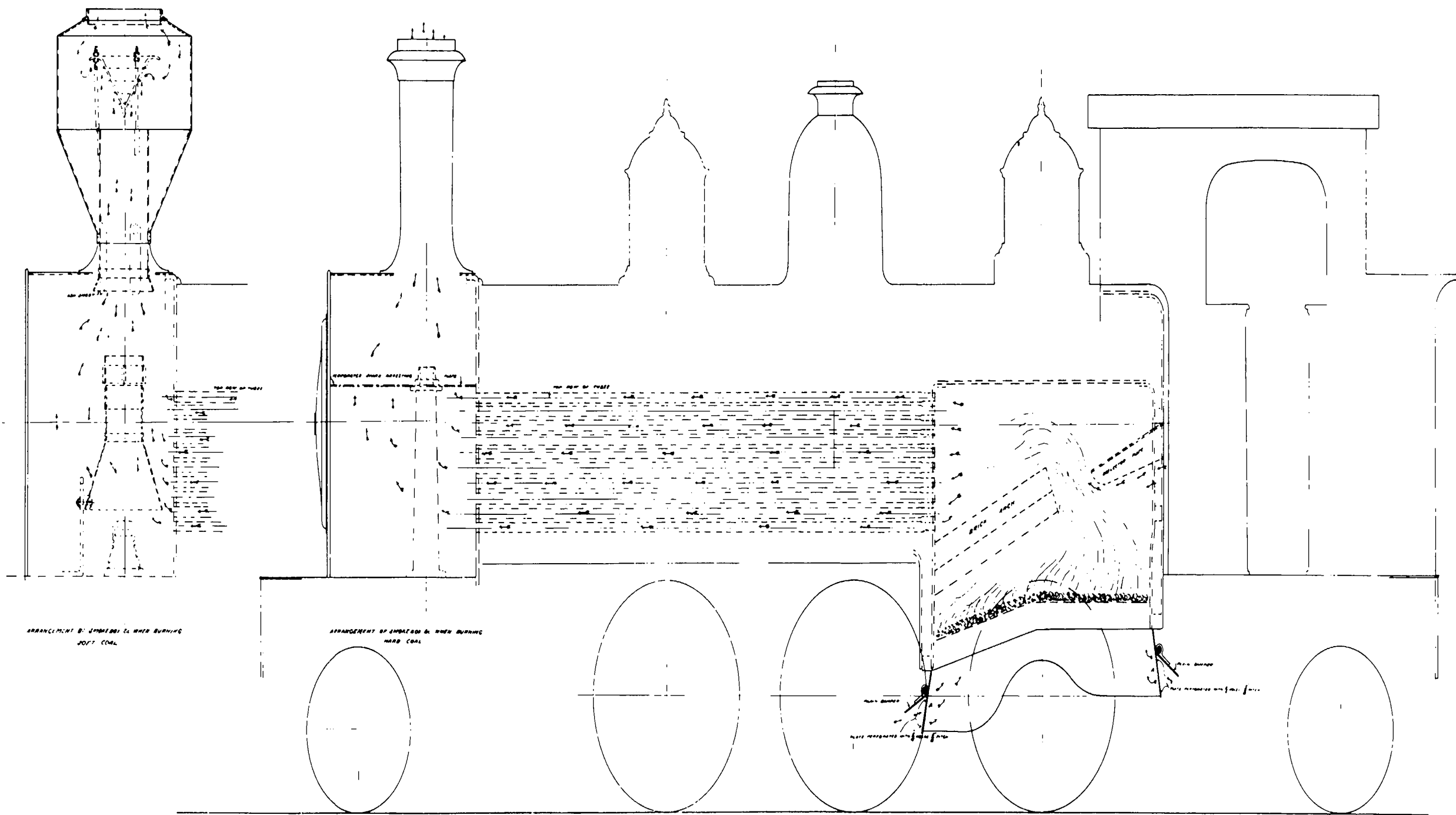


DIAGRAM No. 1.



ARRANGEMENT OF DAMPERS TO ASHPAN, & IN USE ON THE NEW ZEALAND RAILWAYS

ARRANGEMENT OF DAMPERS TO ASHPAN, & IN USE ON THE NEW ZEALAND RAILWAYS

NOTE: A.A. THESE PERFORATED DAMPERS CANNOT BE OPENED WHEN ENGINE IS RUNNING

13/12/1900

—N.Z.R.—

— DIAGRAM SHOWING ARRANGEMENT OF SPARK ARRESTING PLATE,
PERFORATED DAMPERS TO ASHPAN, & IN USE ON THE NEW ZEALAND RAILWAYS —

DESIGNED BY
DRAWN BY
CHECKED BY

2732