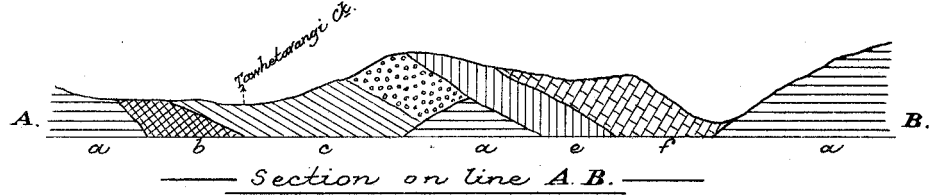


- Reference.
- a. Paleozoic slaty shales.
 - b. Carbonaceous marls.
 - c. Sandy marls.
 - d. Slate conglomerate.
 - e. Calcareous sands.
 - f. Foraminiferous limestone.
 - h. Miocene breccias.
 - i. Auriferous andesites.
 - k. Alluvial deposits.



SEDIMENTARY BEDS. TOROHINE.

To illustrate Report on the Coromandel Goldfield.
 by J. M. MacLaren. B.Sc.
 C. H. Pierard. lith.