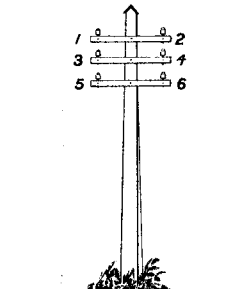


NORTH ISLAND N.Z. TELEGRAPH AND TELEPHONE CIRCUITS

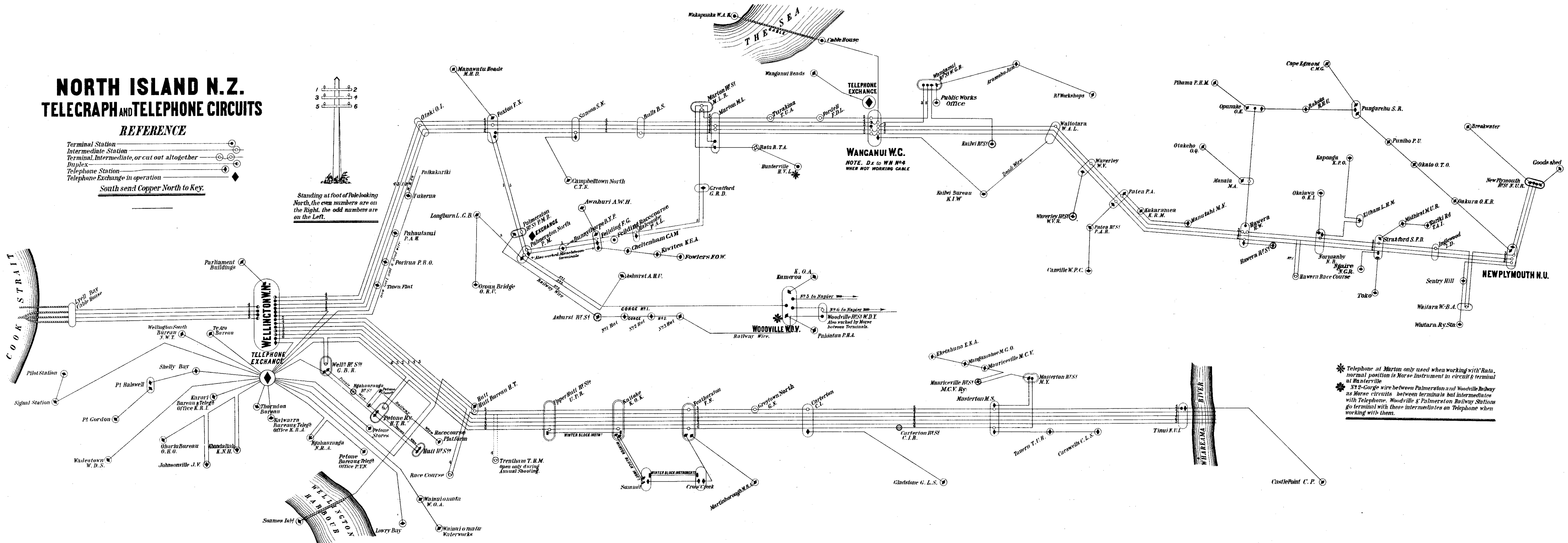
REFERENCE

- Terminal Station
- Intermediate Station
- Terminal, Intermediate, or cut out altogether
- Duplex
- Telephone Station
- Telephone Exchange in operation

South send Copper North to Key.



Standing at foot of Pole looking North, the even numbers are on the Right, the odd numbers are on the Left.



* Telephone at Marton only used when working with Rata, normal position is Morse instrument in circuit & terminal at Huntville
 * No 2-Gorge wire between Palmerston and Woodville Railway as Morse circuits between terminals but intermediates with Telephone. Woodville & Palmerston Railway Stations go terminal with these intermediates on Telephone when working with them.