

1880.

NEW ZEALAND.

MARINE DEPARTMENT

(ANNUAL REPORT OF THE).

Presented to both Houses of the General Assembly by Command of His Excellency.

SIR,—

Marine Department, Wellington, 3rd August, 1880.

I do myself the honor to transmit herewith, for your Excellency's information, the report of the Marine Department of this colony for the financial year ended the 30th June last.

H. A. ATKINSON,

Minister having charge of the Marine Department.

His Excellency Sir Hercules Robinson, G.C.M.G., &c.

Governor of New Zealand.

REPORT.

SIR,—

Marine Department, Wellington, 15th July, 1880.

I have the honor to submit the following report on the working of the Marine Department for the nine months ended 31st March last, that being the date on which, under the new arrangements, the Financial Year terminated.

Lighthouses.—During the period for which this report is made, new lights have been exhibited at Hokitika, on the 22nd September, 1879; Akaroa Head and Cape Saunders, on the 1st January, 1880. Hokitika light is a fixed white light of the fifth order dioptric, the illuminant being gas. This light being a local light, is maintained by the Harbour Board. Akaroa Head Light is a flashing white light of the second order dioptric, shewing a flash every 10". Cape Saunders light is a revolving white light of the second order dioptric, attaining its greatest brilliancy once a minute.

A report, by the Marine Engineer, on works in connection with lighthouses, which have been erected under his directions during the past year, is appended.

Paraffin burners have been procured for Pencarrow Head and Tiri Tiri Lighthouses. When these are fitted, all the New Zealand lights will be burning that oil.

New Lights.—The lantern and apparatus for Mokohinau Light have been some years in the Colony; and the land required for its erection has been taken under the provisions of the Shipping and Seamen's and Public Works Acts. I would strongly urge upon the Government to have it erected at once, as it is much required. The light at Cape Egmont is also one which it would be very desirable to go on with at once. The tower apparatus and lantern belonging to the Mana Island light, which was extinguished when the Brothers light was first shown, are, as you are aware, proposed to be used at Cape Egmont. The dangerous passage of the French Pass is now taken by all sizes of steamships, at night, and I fear some serious casualty will arise unless a light is put up to show it.

The leading lights proposed to be erected at Tory Channel have arrived in the colony, and a sum of money to defray the cost of the necessary buildings has been placed on the estimates.

A number of small port lights have been procured from England; they are intended to replace some of the inferior lights now used at the entrance to small ports, rivers, &c.; arrangements have been made to offer them at cost price to the Harbor Boards which require them.

The store for the Marine Department has been erected near Pipitea Point, Wellington, and has been found to be most useful.

Light Dues.—The light dues collected at various parts of the colony during the nine months amounted to £9404 14s. 9d, being £985 3s. 5d. less than during

the corresponding period of the previous year. In accordance with the promise made to Parliament by the Honorable the Colonial Treasurer, all light dues on coasting vessels were abolished from the 1st April last.

Government Steamers.—The *Hinemoa* has been doing work almost exclusively outside this department; her engines and boilers have had a thorough overhaul, and are now in good order. The *Stella* has been constantly employed, principally in work connected with this department, although she has done a considerable amount of work as opportunity offered for other branches of the Government service.

Advantage has been taken of the *Stella* being at the out-ports from time to time to clean and examine all the buoys, as also to lay new buoys where it has been found necessary to do so for the convenience of shipping.

Examination of Masters, &c.—Certificates of competency have been issued to 94 candidates, 70 being for masters, mates, and engineers of seagoing vessels, and 24 for masters and mates of river steamers.

An Order in Council making new Regulations for the prevention of collisions at sea having been issued in Great Britain, under the provisions of sections 172 of "The Shipping and Seamen's Act, 1877" it is in force in New Zealand. The Regulations will come into force on the 1st September next. Copies have been circulated to the various Custom Houses, &c., for distribution amongst seafaring people.

Surveys, &c.—Capt. McGillivray having reported some dangers in the Bay of Plenty a survey was made, and that off Plate Island was discovered. A survey was also made of a danger discovered off the South end of Motiti. The result of these surveys has been sent to the Hydrographer to the Admiralty for insertion in the New Zealand Chart. A survey has also been made at Catlin's River for the purpose of enabling the Marine Engineer to report on the removal of certain rocks which obstruct the entrance there.

The necessary data to enable Sir John Coode to frame his reports on Otago, Waitara, Westport, Wairoa and Gisborne (Poverty Bay), have been sent, and Sir John's reports on the Thames, Patea, Milford Lagoon, Bluff Harbour, New River, Hokitika, Tauranga, and Greymouth, have been received.

Steam Navigation.—Passenger Certificates have been issued to 119 steamers 12,036 tons, 4650 horse power.

Naval Training School.—The manager's report is appended hereto. I can only reiterate the remarks that I have already made relative to the criminal element in the school.

Weather Reporting.—Captain Edwin's report is forwarded herewith. The weather reporting is still much appreciated by seamen.

Wrecks and Casualties.—During the nine months, reports have been received of 48 casualties. Of these, 42 were on or near the coasts of the Colony, 14 of 1979 tons, being total losses, 23, of 5387 tons, partial losses, and 6 cases of loss of lives only. Seven lives were lost, viz., one each from the *Augusta*, *Beautiful Star*, *Clematis*, *Eliza Firth*, *Sarah Pile*, *Shepherdess*, and *Storm Bird*. Of the five casualties reported as having occurred beyond the Colony, one, of 86 tons, was a total loss; three, amounting to 567 tons, were partial losses, and one was a case of loss of life only—a man having been washed overboard from the *Rotomahana*.

Returns.—The usual returns, wreck chart, &c., are appended hereto; as is also a chart showing the various lighthouses on the coast of New Zealand, which is a reduced copy of one prepared for the Sydney Exhibition.

I have, &c.,

R. JOHNSON,

Secretary.

The Honorable the Minister having charge
of the Marine Department.

APPENDIX.

REPORT ON LIGHTHOUSE WORKS, BY THE MARINE ENGINEER.

The MARINE ENGINEER to the SECRETARY Marine Department.

SIR,—

Marine Office, Wellington, 31st March, 1880.

I have the honor to forward, for the information of the Minister having charge of the Marine Department, the annual report on works executed for new lighthouses, &c., during the year, viz. :—

Hokitika Harbour Light.—This has been completed since last report. The light was first exhibited on 22nd September, 1879. It is a fifth-order fixed light, the illuminant being gas. It will be maintained by the Harbour Board, Hokitika.

Akaroa.—These works were satisfactorily completed, and the light was shown for the first time on 1st January, 1880. The light is a second-order flashing light, showing a flash every ten seconds.

Cape Saunders.—The works here have also been completed in a satisfactory manner, and the light was first shown on 1st January, 1880. It is a second-order revolving light, attaining its greatest brilliancy once a minute.

Marine Store and Shed.—These buildings, which were very much needed for the use of the department, have been erected on the Thorndon reclaimed land, near Pipitea Point, Wellington, and are now in use.

I have, &c.,

JOHN BLACKETT,
Marine Engineer.

The Secretary Marine Department.

REPORT OF THE EXPERIMENTAL SYSTEM OF STORM WARNINGS.

Captain EDWIN to the Hon. the MINISTER having charge of the Marine Department.

SIR,—

Wellington, May 20th, 1880.

In forwarding for your consideration the sixth report of the experimental system of storm warnings, I venture to commend to your notice the results of the work as shewn in the accompanying returns, which include information from all the stations since June 30, 1879, with the exception of Mongonui, from which place reports have only been received since January last, the percentage results of correct forecast at that place during the three months are as follows :—Direction of wind, 91.17 ; force of wind, 17.64. Barometer movement, 75.75 ; sea movement, 50.00. Return No. 1 gives the percentage value of correct forecast at each station during the last nine months, and the yearly mean for the whole colony is given at the foot of the return ; the result for the force of wind is, as heretofore, lower than any of the other values, but the results of the forecast of direction of wind and barometer movement continue the best criterion of the reliability of the work ; the barometer forecast especially so, as the force of wind depends upon the nature of the country in the vicinity, which may shelter the station greatly, but the barometer is not affected by such peculiarities, and the result of this forecast is therefore of especial value. Timaru shews the lowest value for force of wind, but it will be seen that the forecast result for barometer movement is not very different from those of Lyttelton and Oamaru. The sea movement continues to shew a good result of correct forecast. This return also shews the number of gales which were experienced at each station without intimation of their approach having been received ; of these the greatest number occurred at Wanganui, amounting to nearly 8 per cent. of the warnings received there. Results for New Plymouth are published for the first time in this report.

Return No. 2 is a comparative one, showing the monthly value of correct forecast for the whole colony during a period of three years, with the exception of the months of August and September, 1877, during which time I was under medical treatment. The mean values of the six monthly periods are also given, and this return shows conclusively that reliable information can be given upon these subjects.

Return No. 3 shows the percentage of correct forecast for the whole colony during the first three months of the current year.

Return No. 4 shows the result of a storm warning issued in advance of a depression coming from the south-west on 2nd October, 1879 ; it was followed by another from the same quarter on the 3rd. In the first instance warnings were, as usual, not sent northward of Napier and New Plymouth, but by the next day the first depression had advanced well to the north-east, and warnings were therefore sent to the northern stations. The approach of the second depression necessitated warnings being again sent to the districts south of Napier. This is a very general method of procedure in this colony.

H.—13.

Return No. 5 shows the manner in which warnings were issued in advance of a depression coming from the northward. Its approach was first detected on the 9th March, and it passed the East Cape on the 11th, moving to the southward inclining to the south-south-west after passing Lyttelton. It did not approach the stations north of Auckland so closely as these areas usually do (for example of this see Marine Department Report for 1878-9), and consequently the wind at those stations came from the westward instead of the eastward of south. This return is also very instructive as showing that the force of wind on the land was not, generally speaking, greater than a strong gale, but the movement of barometer was very marked. I am indebted to Captain J. Bruce, R.N., of H.M.S. Cormorant, for valuable observations made during the passage of this gale when the barometer fell to 28·44, and the full violence of the wind was experienced, the vessel passing through the centre and experiencing the change of wind from north-east to south-west with hurricane force and a tremendous sea.

The remaining returns are copies of those sent by the officers in charge of the stations, and show the manner in which information of results is forwarded to the central office; they contain remarks, &c., relative to the warnings in returns Nos. 4 and 5.

The results of warnings are always decided by the officers who receive them. This plan has been in use during the last six years; it has been always found to work well, and there can be no doubt that the verdict of those at the place must be more reliable than any data compiled at a central office.

Since the last report, the work of storm warning has been on more than one occasion favorably noticed by the press; daily forecasts have now been published in the Wellington evening papers for more than two years past, and similar information could be sent to any other evening papers; the Press Association would probably undertake to distribute it, but to enable the morning papers throughout the colony to publish a forecast, a second daily report would be necessary. Almost the whole value of the information connected with weather forecast depends upon promptitude of transmission, and I have to acknowledge the cordial co-operation of Dr Lemon and the officers of the Telegraph Department.

R. A. EDWIN,

Commander R.N.

The Hon. the Minister having charge of the Marine Department.

No. 1.—RETURN showing Percentage of Correct Forecast at the undermentioned Places during the Nine Months ending 31st March, 1880.

Place.	Direction of Wind.	Force of Wind.	Barometer Movement.	Sea Movement.	Gales without Warning.	Remarks.
	%	%	%	%	%	
Hokianga	92·10	52·63	76·00	The warnings are limited to an area of 12 points of the compass. Force — 7 of Beaufort scale is the lowest for which warnings are considered as being verified.
Russell	81·81	31·95	72·16	44·83	...	
Whangarei	82·45	42·10	79·24	...	1·7	
Coromandel	89·23	40·00	75·41	...	1·5	
Manukau (altitude, 900 feet)	97·29	28·37	77·02	94·11	...	
Auckland	80·26	45·46	84·84	...	1·3	
Grahamstown	95·58	54·41	85·93	
Cambridge (altitude, 200 feet)	83·82	29·85	80·00	
Tauranga	77·38	40·47	75·00	61·36	1·1	
Opotiki	91·02	70·51	77·33	75·92	...	
Taupo (altitude, 1,200 feet) ...	90·56	18·86	77·35	
Gisborne	90·24	48·14	83·11	75·00	...	
New Plymouth	81·92	14·45	82·71	78·04	1·7	
Opunake (altitude, 100 feet)	86·20	31·03	78·56	57·57	...	
Napier	85·71	34·28	73·53	67·85	4·1	
Wanganui	92·85	56·71	88·57	...	7·8	
Castlepoint	93·54	43·95	80·23	86·48	2·1	
Nelson	90·47	17·46	87·30	
Tophouse (altitude, 2,185 feet)	76·92	90·76	81·53	
Blenheim	94·02	28·35	89·23	
Westport	51·68	26·96	81·60	59·75	...	
Kaikoura	63·41	46·34	71·60	81·42	...	
Kikerangu	95·94	87·83	95·65	97·43	1·3	
Hokitika	87·34	16·25	92·50	78·57	...	
Bealey (altitude, 2,180 feet)	94·02	40·29	82·09	
Lyttelton	96·36	27·27	80·00	77·78	...	
Timaru	68·13	8·69	65·16	52·50	...	
Oamaru	75·24	31·68	72·04	60·86	...	
Naseby (altitude, 2,000 feet)	80·35	17·85	81·48	
Port Chalmers	76·74	61·62	66·67	100·00	...	
Queenstown (altitude, 1,100 feet)	95·00	53·33	83·33	
Roxburgh (altitude, 300 feet)	81·17	10·58	84·52	
Balclutha	89·02	17·07	76·31	
Bluff	71·95	52·43	65·27	83·33	...	
Mean average for nine months ...	87·63	38·73	79·51	74·04	0·6	

No. 2—COMPARATIVE RETURN showing Monthly Percentage of Correct Forecast for the whole Colony during three years.

Forecast of	January.			February.			March.			April.			May.			June.			Mean of Six Months.		
	1877.	1878.	1879.	1877.	1878.	1879.	1877.	1878.	1879.	1877.	1878.	1879.	1877.	1878.	1879.	1877.	1878.	1879.	1877.	1878.	1879.
	%	%	%	%	%	%	%	%	%	%	%	%	%	%	%	%	%	%	%	%	%
Direction of Wind...	79.25	88.88	76.81	80.18	83.05	87.11	81.00	87.65	84.39	79.43	89.70	81.53	88.10	92.70	86.88	87.97	88.00	87.73	82.32	88.33	84.07
Force of Wind ...	50.55	57.64	71.01	38.60	44.83	36.81	23.21	57.70	31.21	37.27	54.23	33.93	57.55	49.59	25.82	48.53	34.90	42.00	41.29	51.41	40.13
Barometer Movement	73.81	77.67	85.00	76.19	69.94	78.03	77.77	80.24	74.75	61.78	77.17	73.36	80.21	79.40	74.24	79.94	79.80	77.78	74.95	77.37	77.19
Sea Movement ...	71.43	61.22	80.00	91.66	57.14	64.32	76.54	71.43	79.19	77.78	76.08	70.90	88.46	75.00	66.33	74.50	76.00	66.26	80.02	69.48	71.15

Forecast of	July.			August.			September.			October.			November.			December.			Mean of Six Months.		
	1877.	1878.	1879.	1877.	1878.	1879.	1877.	1878.	1879.	1877.	1878.	1879.	1877.	1878.	1879.	1877.	1878.	1879.	1877.	1878.	1879.
	%	%	%	%	%	%	%	%	%	%	%	%	%	%	%	%	%	%	%	%	%
Direction of Wind...	83.94	88.58	81.98	*	89.95	82.28	*	84.73	81.12	85.44	92.50	82.13	92.50	92.00	84.25	86.85	82.54	86.47	87.18	88.21	83.04
Force of Wind ...	45.25	46.54	39.53	*	49.27	38.58	*	40.80	39.82	60.14	55.46	32.00	47.52	57.78	49.12	35.39	41.27	39.06	47.07	48.52	39.68
Barometer Movement	83.59	76.73	78.66	*	74.27	77.68	*	76.24	84.33	77.54	81.39	77.04	80.72	75.00	86.67	85.54	78.28	77.50	81.85	76.98	80.31
Sea Movement ...	91.89	80.00	71.42	*	75.00	70.00	*	68.42	75.70	68.00	67.74	60.47	56.52	81.08	74.35	67.57	66.67	74.28	70.99	73.15	71.03

* See Report.

No. 3.—RETURN showing Monthly Percentage of Correct Forecast for the whole Colony during the three months ending March 31st, 1880.

Forecast of	January.	February.	March.	Mean of Three Months.
Direction of Wind... ..	84.31	90.15	81.14	85.20
Force of Wind	42.35	21.76	32.00	32.03
Barometer Movement	74.68	68.74	71.42	71.61
Sea Movement	77.14	64.17	71.05	70.78

No. 4.—RETURN showing Result of a Storm-Warning, October, 1879.

Warning Sent.	Date.	Place sent to.	Results.				Remarks.
			Direction of Wind.	Force of Wind.	Barometer Movement.	Sea.	
Bad weather probable any direction between N. and W. and S.W.; glass fall again within 24 hours; wind backing.	2nd	Hokitika ...	Good	7 to 8	Good	Heavy	Thunder and lightning Heavy fall snow Heavy rain and snow Hail, rain, and snow Hard squalls; hail and snow Heavy rain and sleet Squally Heavy squalls Cold and show'ry Overcast, raining, threatening
	"	Westport ...	Good	5 to 8	Good	Heavy	
	"	Opunake ...	Good	5 to 6	Wrong	Heavy	
	"	Kekerangu ...	Good	10 to 11	Good	Heavy	
	"	Kaikoura ...	Good	7	Good	Rough	
	"	Castlepoint ...	Good	9 to 10	Good	...	
Bad weather probable any direction between N.W. and W. and S.; expect glass fall soon, and wind backing.	"	Tophouse ...	Good	9 to 10	Good	...	
	"	Lyttelton ...	Good	7 to 8	Good	...	
	"	Timaru ...	Good	5 to 6	Good	Smo'th	
	"	Oamaru ...	Good	7 to 8	Good	...	
	"	Port Chalmers...	Good	9 to 10	Good	...	
	"	Bluff ...	Good	7 to 8	Good	...	
	"	Balclutha ...	Good	8	Good	...	
	"	Queenstown ...	Good	7 to 8	Good	...	
	"	Roxburgh ...	Good	5 to 6	Good	...	
	"	Naseby ...	Good	5 to 6	Wrong	...	
Bad weather probable any direction between N. and W. and S.W.; glass fall soon; expect heavy gale and very heavy sea within 12 hours.	"	Bealey ...	Good	3 to 5	Good	...	
	"	New Plymouth	Good	7 to 10	Good	Heavy	
Bad weather probable; expect heavy gale, direction as wired yesterday (N. and W. and S.W.); glass should be falling now; expect very heavy sea.	3rd	Hokitika ...	Good	8	Good	Heavy	Violent squalls
	"	Westport ...	Good	7 to 8	Good	Rough	
Bad weather probable between N. and W. and S.W.; glass fall again soon, and wind backing; expect heavy sea within 24 hours.	"	Manukau ...	Good	5 to 9	Good	Heavy	
	"	Opotiki ...	Good	6 to 7	Good	Heavy	
Bad weather probable any direction between N. and W. and S.W.; glass falling again very soon.	"	Nelson ...	Good	4 to 5	Good	...	
	"	Blenheim ...	Good	5 to 7	Good	...	
Bad weather probable any direction between N. and W. and S.W.; glass falling again soon; wind backing; indications hard gale.	"	Auckland ...	Good	9 to 10	Good	...	Hard squalls Furious squalls Heavy squalls Hard squalls
	"	Hokianga ...	Good	9 to 10	Good	...	
	"	Russell ...	Good	7 to 8	Good	...	
	"	Whangarei ...	Good	9	Good	...	
	"	Cambridge ...	Good	8 to 9	Good	...	
	"	Napier Spit ...	Good	6 to 9	Good	...	
	"	Grahamstown...	Good	6 to 7	Good	...	
	"	Coromandel ...	Good	7 to 8	Good	...	
	"	Tauranga ...	Good	6 to 7	Good	...	
	"	Gisborne ...	Good	6 to 8	Good	Heavy	
	"	Taupo ...	Good	8 to 9	Good	...	

No. 5.—RETURN showing Result of Storm-Warning—March, 1880.

Bad weather probable any direction between South-east and East and North; glass fall, sea heavy within 12 hours	9th	Monganui	E.N.E.	2 to 3	Good	Wrong	Heavy rain Unsettled appearances
	"	Russell	S. to S.W.	8 to 9	Good	Moderate	
	"	Tauranga	S.W.	5	Good	Wrong	
Bad weather probable any direction between South-east and East and North; glass fall soon	"	Opotiki	East	7 to 8	Good	Good	Raining heavily
	"	Gisborne	Vbl.	0 to 2	Good	Wrong	
	"	Auckland	S.S.W.	5 to 6	Good		
	"	Hokianga	S.E., N., N.W.	8 to 9	Good		
	"	Whangarei	S.S.E., S.W.	7 to 8	Good		
	"	Cambridge	S. to E.	5 to 6	Good		
	"	Grahamstown	N.E., W.	7 to 8	Good		
Bad weather probable between South-west and South and East; glass further fall, sea likely heavy within 12 hours; expect much rain	10th	Coromandel	N.E.	6 to 7	Good		Raining heavily
	"	Taupo	N.E., S.	4 to 7	Good		
	"	Castlepoint	S.W., S.	8 to 9	Good	Good	
Bad weather probable between South-east and South and West; glass further fall, and sea heavy from South of East	"	Gisborne	E., S.E., S.W.	4 to 10	Good	Good	Raining heavily
	"	Napier	S.S.W., S., S.E.	4 to 9	Good	Good	
Bad weather probable between South-west and South and East; glass further fall, and sea heavy from South of East	"	Bluff	N., W., S.W.	5 to 6	Good	Good	Raining heavily
	"	Lyttelton	S.W.	8 to 10	Good	Good	
Bad weather probable between North and West and South-west; glass further fall, river flood, and sea making from South of West within 24 hours	"	Hokitika	N.W., W.	2 to 3	Good	Good	Steady rain Showery, no flood
	"	Westport	S.W.	7	Good	Good	
Bad weather probable between East and South and South-west; glass further fall, expect heavy rain soon	"	Timaru	South	5 to 6	Good	Good	Passing showers
	"	Oamaru	S.E., S.W.	6 to 7	Good	Good	
	"	Port Chalmers	S.W.	8 to 9	Good		
	"	Queenstown	East	7 to 8	Good		
	"	Roxburgh	N.W., S.W.	3 to 5	Good		
	"	Naseby	S.S.W.	5 to 6	Good	...	
	"	Balclutha	E., S.W.	5	Good	...	
Bad weather probable between North and West and South-west; glass further fall, and much rain	"	Bealey	S.E.	4 to 5	Good	...	Heavy rain and stormy appearance Heaviest rain this season Showers Very heavy rain
	"	Tophouse	No returns for this month			...	
	"	Wanganui	South	8	Good	...	
	"	Nelson	N.W., S.W.	5 to 6	Good		
Bad weather probable between East and South and South-west; glass further fall, sea heavy within 24 hours	"	Kaikoura	S.W.	8	Good	Good	Very heavy rain
	"	Kekerangu	S.S.W.	9 to 10	Good	Good	
Bad weather probable any direction between South-east and South and West; glass further fall, sea heavy after 12 hours, expect much rain	"	Opunake	S., S.E.	7 to 8	Good	Good	Not much rain
	"	New Plymouth	S., S.E.	7 to 8	Good	Good	
Bad weather probable between South-east and South and West; glass further fall, and much rain, rivers likely rising within 24 hours	"	Blenheim	West	2 to 3	Good	...	Not much rain
	"						

RETURN No. 1, showing Results of Storm-Warnings received at Bealey (altitude, 2,180 feet) during the Month of October, 1879.

Date and Hour Received.	Indicated Weather.	Result.		Remark
		Direction.	Force.	
2nd, 4.21 p.m.	Bad weather probable between N.W. and W. and S.; glass fall	Good	3 to 5	* * * Forty-eight hours from the time of receipt should be allowed before the warning is considered to have failed. Barometer good; N.W. and N.; overcast, raining and threatening. N.W., 6 to 7; cloudy and squally. Barometer good; N.W., 7 to 9; heavy showers. 14th, S.E., 3; gloomy. Barometer good. 18th, 11 p.m., N.W., 7 to 9; threatening and squally. 19th, N. 3; overcast and rain.
10th, 13th,	Bad weather probable between N. and W. and S.W.; glass fall	Not warned	7 to 9	
1.44 p.m. 18th, 4.18 p.m.,	Bad weather probable between N. and W. and S.W.; glass fall	Good	7 to 9	

J. M. MUNCE, Telegraphist.

RETURN No. 1, showing Results of Storm-Warnings received at Lyttelton during the month of October, 1879.

Date and Hour Received.	Indicated Weather.	Result.		Remarks.
		Direction of Wind.	Force of Wind.	
2nd, 4 p.m.	Bad weather probable, any direction between North-west and West and South; expect glass fall soon; wind backing	Good	8	Barometer wrong; S.W. gale, with hail, rain, and snow, lasting till midnight on the 5th; glass rose from 29.15 to 29.48, then fell suddenly to 29.30.
9th, 4 p.m.	Indications strong winds, any direction between East and North and North-west; glass fall within 24 hours	Good	2 to 3	N.E. wind, dense fog; barometer fell from 30.32 to 30.00.
10th, 2 p.m.	Bad weather probable, any direction between North-east and North and West; glass further fall	Good	6	North 6, squally and overcast; glass fell four-tenths.
13th, 1 p.m.	Bad weather probable, any direction between N.E. and N. and West; glass further fall; indications bad, and shew may have sea within 24 hours	Good	4 to 6	N.W. 4.6, squally and overcast from 4 p.m., lasting till midnight, when the wind shifted to S.W. 6, overcast with fog; no sea; glass fell a tenth.

H. McLELLAN, Harbourmaster.

RETURN No. 1, showing Results of Storm-Warnings received at Hokianga during the month of October, 1879.

3rd, 2.3 p.m.	Bad weather probable, any direction between North and West and South-west; glass falling again soon, and wind backing	Good	9 to 10	Barometer good; gale from S.W.; force 9 to 10 on morning of 4th; had furious squalls before daylight.
6th, 4.50 p.m.	Bad weather probable, any direction between S.E. and E. and N.; glass fall	Wrong	...	No bad weather; glass rose.
13th, 1.10 p.m.	Bad weather probable, any direction between N.E. and N. and W.; glass fall	Good	7 to 9	Barometer good; had heavy rain on 14th, and wind shifted round from N.E. to W. at 3 p.m. of 14th, blowing furious squalls.
14th, 5.15 p.m.	Bad weather probable, any direction between N. and W. and S.W.; glass further fall	Good	7 to 8	S.W. gale at 8 a.m. of 15th; barometer good.
15th, 2.35 p.m.	Bad weather probable, any direction between S.E. and E. and N.; glass rise, but fall again soon	Good	4	Light winds, no bad weather; barometer rose steadily.

THOS. L. MILLAR, Telegraphist.

RETURN No. 2, showing Results of Storm-Warnings received at Kekerangu during the month of October, 1879.

10th, 2.20 p.m.	Bad weather probable, any direction between N.E. and N. and W.; glass further fall; expect considerable sea within 24 hours	Good	8 to 9	Strong gale 8-9 set in from N.W., 9 p.m. 10th, and continued between N.N.E. and W.N.W. till 8 p.m. on 13th; barometer good.
14th, 12.13 p.m.	Bad weather probable, any direction between S.W. and S. and E.; glass rise fast soon; expect very heavy sea	Good	9 to 11	Strong gale 9-11 from S.S.E., set in 9 p.m. on 14th; during night of 15th, wind shifted South about to S.W., and continued till 1 p.m. 16th; glass rose .46; heavy sea.
18th, 3.41 p.m.	Bad weather probable, between N.E. and N. and W.; glass further fall	Good	7 to 8	18th, N.E. 5 to 6; shifted on 19th to S.E. 7-8, with drizzling rain; glass fell .11.
20th, 4.10 p.m.	Bad weather probable, any direction between N. and W. and S.W.; glass fall again soon	Good	6 to 8	During night of 20th, N.W., 7-8; wind shifted to S.W., 6-7 on night of 21st, with heavy rain; glass fell .40.

W. H. HAMILTON, Telegraphist.

RETURN No. 1, showing Results of Storm-Warnings received at Blenheim during the month of October, 1879.

Date and Hour Received.	Indicated Weather.	Result.		Remarks.
		Direction of Wind.	Force of Wind.	
3rd, 1 p.m.	Bad weather probable any direction between N. and W. and S.W.; glass fall again very soon.	Good	5 to 8	Barometer good; N.W. 5 to 7 in afternoon, and 5 to 8 between 6 and 7 p.m.; snow fell on the hills on night of 3rd and 4th.
10th.	Bad weather probable any direction between N.E. and N. and W.; glass further fall.	Good	5 to 9	Barometer good; N.W. 5 to 6, all day, with falling glass; calm next morning, but N.N.W. 5 to 8 at 3 p.m.; N.W. 5 to 9 on 12th; falling glass.
13th, 3 p.m.	Bad weather probable any direction between N.E. and N. and W.; glass further fall.	Good	5 to 6	Barometer good; N.W. 5 to 6 during the day; rain, lightning to N.W. night of 13th and 14th; glass fell till a.m. of 14th.
14th, Noon.	Bad weather probable any direction between W. and S. and S.E.; glass rise fast within 12 hours.	Good	2 to 3	Glass began to rise 4.30 p.m. on the 14th., rose twenty-two hundredths in 8 hours S.E. 2-3 commenced evening; continued on 15th.

W. S. FURBY, Telegraphist.

RETURN No. 1, showing Results of Storm-Warnings received at Napier Spit during the month of October, 1879.

3rd, 1.43 p.m.	Bad weather probable, between N. and W. and S.W.; glass fall soon, and wind backing; indications hard gale	Good	6 to 9	Barometer good; hard W.S.W. gale; glass falling.
4th, 3.35 p.m.	Bad weather probable, between W. and S. and S.E.; glass fall another tenth; sea increase; glass rise within 24 hours	Good	4 to 8 to 8 to 10	4th, S.W. to S. 4-8, rain and hail-squalls; 5th, S.W. 8-10, rain and hail-squalls considerable; glass rising steadily.
13th, 1.45 p.m.	Bad weather probable, between N.E. and N. and W.; glass further fall; bad indications	Good	3 to 4	Barometer good, N.E. to N.W. 3-4; morning, 14th, calm; glass falling steadily.
14th, 4.1 p.m.	Bad weather probable, between W. and S. and S.E.; glass further fall; but rise within 24 hours; expect sea rising	Good	4 to 7	p.m. 14th, S.W. to S. 4-7; morning, 15th, S.S.W. 6-7; glass rising; sea moderate swell; barometer good.
21st, 1.52 p.m.	Bad weather probable, between N. and W. and S.W.; glass fall considerably within 24 hours	Good	4 to 5	N.W. to N.E. 4-5; barometer fell 7-10 in 48 hours.

W. WILKIE, Telegraphist.

RETURN No. 1, showing results of Storm-Warnings received at Taupo during the Month of October, 1879.

3rd, 1.55 p.m.	Bad weather probable any direction between N. and W. and S.W.; glass fall again soon, wind backing; indications hard gale	Good	8 to 9	S.W., 8 to 9; cloudy; glass fell nearly two-tenths, but rose again during the night.
13th, 2.33 p.m.	Bad weather probable any direction between N.E. and N. and W.	Good	5 to 6	Strong Northerly winds, 5 to 6; blue sky; glass steady.
20th, 2.15 p.m.	Bad weather probable any direction between N. and W. and S.W.; glass fall within 24 hours	Wrong	4 to 5	North-easterly winds; glass rose about one-tenth.
24th, 2.27 p.m.	Bad weather probable any direction between S.E. and E. and N.; glass fall again, soon expect much rain	Good	3 to 4	Moderate N.E. winds; glass fell about one-tenth; no rain.

GEO. CROSSMAN, Telegraphist.

RETURN No. 1, showing Results of Storm Warnings received at Westport during the month of October, 1879.

Date and Hour Received.	Indicated Weather.	Result.		Remarks.
		Direction of Wind.	Force of Wind.	
1st, 3.37 p.m.	Bad weather probable any direction between N.W. and W. and S.; glass further fall; sea very heavy outside, and likely increase on bar.	Good	5	Barometer Good. Strongest force 5, from S.W.; wind S. and S.W. all time. Considerable fall of snow on hills on 1st and 2nd.
2nd.	Bad weather probable any direction between N. and W. and S.W.; glass fall again within 24 hours, and backing.	Good	7 to 8	Strongest force noticed about 8 from S.W.; wind generally S.W., but backed for some time to west force 8; 7 to 8 during that time barometer fell one-tenth; squally, showery, with thunder and lightning.
3rd.	Bad weather probable; heavy gale direction as wired yesterday; sea very heavy outside, and increase on bar; glass fall very soon.	Good	7 to 8	Strongest force as above, which applies generally to this forecast; bar rough, but fell to smooth on 4th, and continued smooth until 11th; glass rose on 4th.

S. A. LEECH, Harbourmaster.

RETURN No. 1, showing Results of Storm-Warnings received at Mongonui during the month of March, 1880

1st, 5.35 p.m.	Glass fall, and strong winds between E. and N.E.	E.N.E.	5	Fresh breeze from E.N.E. on 2nd; glass fell steadily.
4th, 10.26 a.m.	Strong winds between S.E. and N. E., and much sea within 12 hours.	N.E.	3	Moderate breeze from N.E.; sea not heavy; Barometer falling steadily.
9th, 12.16 p.m.	Bad weather probable any direction between S.E. and E. and N.; glass fall; sea heavy within 12 hours.	E.N.E.	2	Barometer good; light winds from E.N.E.; very heavy rain; barometer fell to 29.55.
15th, 1.10 p.m.	Bad weather probable any direction between S.E. and E. and N.; glass fall; sea heavy within 12 hours; expect much rain.	S.W. to E.S.E.	2	Barometer good; wind backed slightly to E. of S., but soon veered round to westward; no sea; no rain.
20th, 1.15 p.m.	Bad weather probable any direction between S. and E. and N.E.; glass further fall.	N.W.	4	Barometer good; moderate to fresh sea-breezes.

S. INDER, Telegraphist.

RETURN No. 1, showing result of Storm-Warnings received at Coromandel during the Month of March, 1880.

2nd, 4.20 p.m.	Bad weather probable any direction between S.E. and E. and N.; glass fall	Good	2	Winds E. to N.E.; glass falling gradually.
4th, 4.51 p.m.	Indications strong winds between S.E. and E. and N.; and falling glass	Good	5 to 6	N.E. winds; and glass falling fast.
9th, 5.5 p.m.	Bad weather probable any direction between S.E. and E. and N.; glass fall soon	Good	6 to 7	Rain, with strong winds from N.E.; glass fallen 5-10ths.
15th, 3.49 p.m.	Bad weather probable any direction between S.E. and E. and N.; further fall glass, and much rain	Fine weather for 48 hours; glass rising slightly.
21st, 5.9 p.m.	Bad weather probable any direction between S. and W. and N.W.; glass further fall, but rising within 22 hours	Good	3 to 4	Winds from N.W.; glass fallen 1-10th.
25th, 4.57 p.m.	Bad weather probable any direction between S.E. and E. and N.; glass further fall; expect high tides	Good	2	Light winds from N.; glass slight fall.

GEO. RAYNOR, Telegraphist.

RETURN No. 2, showing Results of Storm-Warnings received at Grahamstown during the Month of March, 1880.

Date and Hour Received.	Indicated Weather.	Result.		Remark * * Forty-eight hours from the time of receipt should be allowed before the warning is considered to have failed.
		Direction.		
20th, 5.20 p.m.	Bad weather probable any direction between S. and W. and N.W.; glass further fall, but rising within 24 hours	S. by W.	3 to 5	Barometer good; glass fell considerably, and appearance weather indicated change; had little wind until 23rd, when it blew strong W. gale, after which the glass rose rapidly.
25th, 4.45 p.m.	Bad weather probable any direction between S.E. and E. and N.; glass further fall; expect high tides and much rain	E.S.E.	4 to 5	Barometer good; weather generally fine; glass fell nearly 4-10ths, but rose almost immediately; tides very high, but no rain.
30th, 5.25 p.m.	Bad weather probable any direction between S.E. and E. and N.; glass fall soon; much rain within 24 hours; expect high tides	E. by N.	3 to 6	Barometer wrong; weather continued fine; glass rising steadily; no sign change; tides high; no rain.
31st, 4.40 p.m.	Indications continue same as wired yesterday	No change; glass still rising; wind variable. This month has been one of unusually fine weather here.

W. DAVIES, Harbor Master.

RETURN No. 1, shewing Results of Storm-Warnings received at New Plymouth during the month of March, 1880.

8th, 3.56	Bad weather probably any direction between North and West and South-west; glass fall again within 12 hours, but rise and sea making within 24 hours	N.E.	4 to 6	Glass rose '13 on the 9th, and fell '19 on the 10th, and to 29'22 at 5 p.m. on 11th. The gale generally appears to reach here from 24 to 48 hours after warning
15th, 4.15 p.m.	Strong winds between South-east and East and North; glass further fall, indications rain	South	7 to 8	Barometer wrong. No rain.
20th, 4.22	Strong winds between South-east and East and North; further fall glass and rain	S.E.	8 to 9	Strong S.E. winds from 23rd to 29th Rain on 22nd.
31st, 3.54	Bad weather probable between South-east and East and North; glass fall, rain within 24 hours	Wrong	5 to 6	Glass rose steadily from 31st to 5th April. No rain. The weather has been very exceptional; copious rains have fallen in the bush district to within two or three miles of the town of New Plymouth, but for a radius of a mile and a half scarcely a drop has fallen

WM. NORTHCROFT, Meteorological Observer.

RETURN No. 2, showing Results of Storm-Warnings received at Castlepoint during the month of March, 1880.

10th, 1.16 p.m.	Bad weather probable, any direction between S.W. and S. and E; glass further fall; sea likely heavy within 12 hours.	Good	7 to 10	Barometer good; heavy S.W. gale from 10 p.m. of 10th to morning of 12th; glass fell to 28'94 night of 11th; heavy swell come in morning of 11th.
15th, 4.28 p.m.	Indications S.E. and E. and North; glass fall; sea increase.	Good	5 to 6	Barometer good; E.S.E. breeze on 15th; glass fell slightly; sea increased to heavy swell.
17th, 3.44 p.m.	Bad weather probable, any direction between S.W. and S. and E.; sea very heavy within 24 hours.	Good	7 to 9	Succession of gales with steady rain, constantly shifting from E. to S.W. by the S. from night of 18th, until morning of 24th; at 7.30 a.m. of 23rd, was blowing S.W. 9 to 11, heavy swell and rough sea continued all the time.

W. A. HARDING, Telegraphist

RETURN No. 2, showing Results of Storm-Warnings received at Timaru during the month of March, 1880.

Date and Hour Received.	Indicated Weather.	Results.		Remarks.
		Direction of Wind.	Force of Wind.	
12th, 4.7 p.m.	Expect further fall glass; indications still show sea heavy, though may not be much wind.	S.S.W.	5 to 6	Barometer good; fresh breezes from S.S.W., with heavy S.E. sea.
20th, 4.8 p.m.	Bad weather probable any direction between E. and S. and S.W.; glass further fall; sea heavy after 24 hours; bad indications; expect much rain.	N.E.	5 to 6	Barometer good: sea good; fresh breezes from N.E., and much rain
22nd, 1.6 p.m.	Bad weather probable, same indications; wind and glass as wired on Saturday; sea heavy from S. of E. within 12 hours.	N.E.	5 to 6	Barometer good; fresh winds from N.E. to S.E., and heavy S.E. swell.
27th, 3.46 p.m.	Bad weather probable any direction between S. and E. and N.E.; glass fall; sea likely decrease, but gale heavy within 24 hours; expect rain.	N.E.	5 to 6	Barometer good; moderate winds from N.E., with continued S.E. sea.
29th, 2.06 p.m.	Indications continue easterly, and shew increase sea.	N.E.	5 to 6	Barometer rising; fresh breezes from N.E., with passing showers, and sea rising.

ALEX. MILLS, Harbourmaster.

RETURN No. 1, showing Results of Storm-Warnings received at Naseby (altitude, 2,000 feet) during the month of March, 1880.

8th, 1.57 p.m.	Bad weather probable, any direction between N. and W. and S.W.; glass fall, but rise within 24 hours	Calm	...	Barometer good, fallen a tenth since yesterday; raining; no wind; very cold
10th, 4.50 p.m.	Bad weather probable, any direction between E. and S. and S.W.; further fall glass; heavy rain soon	Good	5 to 6	Winds from S.S.W., raining, and very stormy appearances; barometer fell 3-tenths by 11th
17th, 3.50	Expect very cold night	Good	...	It was jolly cold, white frost next morning.
20th, 5.25	Bad weather probable, any direction between S.E. and S. and W.; glass fall, and much rain	Wrong	2 to 3	Barometer fell 3 to 10, ugly and threatening, but rain held off; light winds from N.E.

W. McHUTCHINSON, Telegraphist.

RETURN No. 1, showing Results of Storm-Warnings received at Balclutha during the month of March, 1880.

10th, 5.27 p.m.	Bad weather probable any direction between E. and S. and S.W.; glass further fall; expect heavy rain.	Good	5	The glass fell 5-10; wind from E. to S.W., rose to force 5; the heaviest rainfall experienced this season fell on the 11th.
13th, 3.38 p.m.	River likely rise within 24 hours.	River rose about a foot; rain heavy on 14th.
20th, 4.42 p.m.	Bad weather probable any direction between E. and S. and S.W.; glass further fall; expect much rain.	Good	7	Glass fell steadily on 20th and 21st; wind rose to gale on 21st; a little rain on 22nd.
22nd, 2.30 p.m.	Bad weather probable any direction between E. and S. and S.W.; glass further fall, wind backing soon; expect heavy rain and river high or flooded within 24 hours.	Good	6	The wind blew strong from eastward during most of 48 hours; heavy rain fell during night of 23rd, but river remained low.

A. PROCTOR, Telegraphist.

REPORT ON THE NAVAL TRAINING SCHOOL AT KOHIMARAMA.

Enclosure 2.

The MANAGER Naval Training School at Kohimarama, to the SECRETARY, Marine Department.

SIR,—

Naval Training School, Kohimarama, 15th May, 1880.

I have the honor to transmit, for the information of the Hon. the Minister having charge of the administration of "The Naval Training Schools Act, 1874," the following report for the nine months ending 31st March, 1880.

The health of the boys has been good, the only cases of serious illness being one of dysentery, which was removed to the District Hospital, where a cure was quickly effected, and another of acute rheumatism, supervening on chronic, since taken to the District Hospital, where it is now under treatment. Full particulars under this head will be found in the report of the Medical Officer, which is appended hereto.

Table A gives the educational state of the boys. The progress shown is not so great as in my last report. This is to be accounted for by the fact of several who have been discharged during the period to which this report refers having been long out on license, and also that there are some who appear incapable of acquiring knowledge; but in many cases the improvement has been very satisfactory.

In seamanship the progress has been fair, but with very few exceptions the boys seem to be incapable of retaining the knowledge imparted to them, being often unable to perform what had only a few days previously been taught them, and which they then appeared fully to understand, and being quite adrift when required to put into practice what they can perform with ease when under instruction in class. This difficulty will, however, I trust, be in time overcome.

The schooner which was launched last July is still, I regret to say, leaking, and not having been finally taken over from the builders, I have deemed it inadvisable to use her more than is absolutely necessary; but the term for which she was provisionally taken over will shortly expire, when I hope that the matter will be finally settled. Several attempts have been made by Messrs Sims and Brown to find the whereabouts of the leakage, but so far with only partial success.

Table C gives the quantity of clothing made and other work done in the school. With the exception of the carpenters' work, at which they only assist, the whole has been most creditably carried out by the boys.

Twenty-one boys have been received, and twenty-nine discharged, leaving fifty-six on the register on 31st March, in addition to which one boy whose time expired in June last, but who is not fitted for any regular employment, is still in the school pending a decision being arrived at touching his disposal.

Table B records the visits of clergymen and others for the purpose of imparting religious instruction and performing divine service. The whole of the boys have on several occasions been taken to Auckland in the schooner to attend at their respective churches on Sunday.

The behaviour of the boys has been generally satisfactory, but there are some very bad characters, whose example and influence have a marked effect, showing clearly the advantage that might be expected to accrue from a better system of classification. I have alluded to this in several previous reports, and I am more than ever confined in the opinion that, until a move is made in this direction, the results obtained will not be nearly so satisfactory as they would under more favourable conditions. Section 10 of the Act is the one which furnishes the largest number of boys over seventy-seven per cent. of those on the register on 31st March, having been sent under the provisions of that section, the actual number being thirty-one, of whom eight may be set down as very bad characters, five as a little deficient in intellect, six have a step-parent, two were sent here at the instance of a man who was living with their mother, she having deserted her husband, and one whose mother having deserted her husband, the father (to use the boy's own words) had got another wife; this, I think, goes far to show that the section referred to is made use of by persons who desire to be rid of the responsibility properly belonging to them. In only eleven out of the thirty-one cases here alluded to are the parents ordered to contribute towards the maintenance of their children. The total amount collected on account of maintenance to 31st March, 1880, was seven hundred and seven pounds one shilling and threepence (including a few small sums paid in advance). At the same date there was still unpaid the sum of three hundred and fifty-four pounds thirteen shillings and ninepence, only a small portion of which is likely to be recovered.

The farm and garden work still continue to give fair results; it will be necessary to break up fresh ground for potatoes this year, and material will be required for fencing it in.

Table I gives the number of boys who have been apprenticed during the period to which this report refers, and the callings to which they have been indentured. A large demand for boys for farm work continues to exist. The boys at present are, with few exceptions, desirous of going to sea, but the opportunities of sending them are not nearly as numerous as could be desired.

Table K, in consequence of the report being furnished three months earlier than heretofore, I am not able to give the particulars under this head; but from the verbal information which I occasionally obtain, I have reason to believe that the majority of those who have been apprenticed are giving satisfaction.

The cost of victualling has been nearly sixpence half-penny (6.496) per head per diem—including fuel, lights, soap, seeds for farm and garden, and for six weeks the cost of conveying the provisions from Auckland to the school.

It is very desirable that cottages should be erected for the instructors, and also that a place should be provided for the boys to play in during wet weather, and in the evenings. The recent alterations in the dormitory—viz., substituting iron framework and hammocks for the wooden bunks previously in use, has conduced greatly to the comfort of the boys, and is also a material improvement, from a sanitary point of view, the erection of a closet for night use (connected with the dormitory), would greatly aid in this respect.

I have again to thank Dr. Goldsbro for his exertions in collecting for the amusement fund, and to the friends who r liberally responded to his appeals on behalf of the boys.

I have, &c.,
G. R. BRETON, Manager.

A.—TABLE showing the Educational State of Boys.

Particulars.	Read.				Write.				Cipher.			
	Well.	Indiffer-ently.	Not.	Total.	Well.	Indiffer-ently.	Not.	Total.	Well.	Indiffer-ently.	Not.	Total.
Remaining on 30th June, 1879	30	34	...	64	33	31	...	64	17	47	...	64
Admitted during nine months ending 31st March, 1880	6	8	7	21	6	4	11	21	3	5	13	21
Total	36	42	7	85	39	35	11	85	20	52	13	85
Discharged during nine months ending 31st March, 1880	18	11	...	29	19	10	...	29	13	16	...	29
Remaining on 31st March, 1880	20	33	3	56	28	28	...	56	14	41	1	56
Total	38	44	3	85	47	38	...	85	27	57	1	

B.—TABLE showing the Visits of Clergymen for Divine Service and Religious Instruction during the Nine Months ending 31st March, 1880.

Roman Catholic.	Church of England.	Church of England.	Church of England.
Rev. T. Riordan, 14.	Rev. J. Kinder, 22	Mr. W. St. Clair T. Tisdall, 8	Mr. A. J. Hitchcock, 2

C.—Return of Articles Manufactured and Work Done in the School during Nine Months ending 31st March, 1880, with estimated Cost of Labour employed.

Articles	Quantity.	Rate.	Price.	Articles.	Quantity	Rate.	Price.
Duck Jumpers	76	s. d.	£ s. d.	Amount brought forward	29 18 0
Duck Trousers	99	1 0	3 16 0	Alterations to office and hospital, to provide room for schoolmaster	3 days.	10 0	1 10 0
Duck Caps	85	1 0	4 5 0	Table for schoolmaster's room	1	5 0	0 5 0
Oilskin Jumpers	24	1 0	1 4 0	Night-stools for hospital and isolating ward	2	5 0	0 10 0
Oilskin Trousers	24	1 0	1 4 0	Windows glazed	26	0 3	0 6 6
Pillow-cases	14	0 1½	0 1 9	Stretchers repaired	8	1 0	0 8 0
Flannel Shirts	87	0 7	2 10 9	Repairs to stone foundations of buildings	1 day	12 0	0 12 0
Sheets	4	0 6	0 2 0	Sword mats made for schooner	16 fms.	3 0	2 8 0
Serge Trousers	2	1 10	0 3 8	Spun yarn and nettle stuff made	100lbs.	0 4	1 13 4
Hammocks	164	1 0	5 4 0	Small rope made	50 fms.	9 0	0 9 0
Ornamental fencing erected	2 days	10 0	1 0 0	Aprons and breastplates for leadsmen	2	1 6	0 3 0
Gates for garden	2	8 0	0 15 0	Draw buckets	3	3 0	0 9 0
Seat on playground	1	5 0	0 5 0	Rope fenders made	2	1 0	0 2 0
Buckets made	8	2 0	0 16 0	Sinnet for sea gaskets	50 feet	...	0 15 0
Repairs to closets	2 days	10 0	1 0 0	Harbour gaskets	21	0 6	0 10 6
Cover for boiler	1	2 6	0 2 6	Side ladder for schooner	1	5 0	0 5 0
Oars re-coppered and repaired	20	0 6	0 10 0				
Framework for tanks	2	2 6	0 5 0				
Painting tanks	½ day	10 0	0 5 0				
Painting schoolmaster's room, office, and cowshed	3 days	10 0	1 10 0				
Amount carried forward	29 18 8	Total	40 5 0

D.—RETURN showing Admissions and Discharges during the Nine Months ending 31st March, 1880.

Admitted.	Number.	Discharged.	Number.
Remaining on 30th June, 1879	64	Apprenticed	11
New boys received	21	On application of relatives	7
		Expelled	1
		Over age	1
		Time expired	9*

Remaining on 31st March, 1880, fifty-six.

Five on license, two put on board s.s. Stella, one sent to his friends, one absent without leave

E.—Table showing particulars of Parentage of Boys received during nine months, ending 31st March, 1880.

Number of Boys Received.	Both Parents Living.	One Parent Living.	Both Parents Dead.	One Unknown, One Living.
21	14	4	2	1

Circumstances as shown in Register.

Sent under Provisions of Section 8 of Act	3	No particulars received	10
" " " 9 "	2	Boy says his mother has deserted him and his father has second wife	1
" " " 10 "	15	Step-mother; boy had opened and then burnt a registered letter belonging to his master	1
No. Section stated on papers which accompanied boy *	1	Father at sea; boy beyond control of mother	1
		Had stolen a coat with 30s. from Invercargill Grammar School	1
		Previously in school under section 11; brother had obtained his discharge	1
		Step-father; boy has a vicious temper	1
		Previously in school under section 10; father obtained boy's discharge, and shortly after was sent to gaol for beating him	1
		Has step-father living, who is a habitual drunkard	1
		Step-father	1
		Parents receiving relief from Wellington Benevolent Society	1
		Had stolen goods to the value of £3 15s. and been sentenced to seven days in Wanganui gaol; mother a maori; father believed to be in America *	1
Total	21	Total	21

F.—TABLE showing from whence Boys have been received during Nine Months ending 31st March, 1880.

Wellington	4	Auckland	9
Hokitika	1	Invercargill	1
Oamaru	1	Mercer	1
Christchurch	1	Opotiki	1
Nelson	1	Marton	1

Total, 21.

G.—TABLE showing ages of Boys received during Nine Months ending 31st March, 1880.

Number of Boys received.	Aged.				
	10	11	12	13	14
21	2	9	3	6	1

H.—TABLE showing Religions of Boys received during Nine Months ending 31st March, 1880.

Church of England.	Roman Catholic.	Presbyterian.	Lutheran.	Baptist.	Wesleyan.	Protestant.
9	4	3	1	1	2	1

Total, 21.

I.—TABLE showing Number of Boys Apprenticed from the School during the Nine Months ending 31st March, 1880.

When Apprenticed.	Seamen.	Farmers.	Farmer and Nurseryman.	Servant and Messenger.	Total.
Between 1st July, 1879, } and 31st March, 1880 }	4	5	1	1	11

K.—TABLE showing Conduct of Boys Apprenticed from the School prior to 31st March, 1880.

Particulars.	REPORT.					Total.
	Good.	Fair.	Indifferent.	Bad.	No Report.	

The information required for this Return has not been procured.

Total, 64.

L.—RETURN of Absconders during nine months ending 31st March, 1880.

Boys' Name.	No.	No. of times absconded during above-named period.	Previous to 1st July, 1879.	Remarks.
Heatley, Charles...	141	1	4	Brought back by police.
Dunn, Wm. ...	180	1	...	Ditto.
Bateman, Rd. ...	152	2	...	Ditto.
Smith, C. F. ...	155	1	...	Ditto.
Laird, Wm. ...	183	2	...	Ditto.
Clement, J. A. ...	173	1	...	Ditto.
Buden, J. ...	87	1	1	Ditto.
Connolly, T. ...	133	1	...	Ditto.
Kneebone, J. R....	153	1	1	Ditto.
Floyd, Wm. ...	166	1	...	Ditto.
Harkins, J. ...	171	5	...	Ditto; four times over by a member of staff.
Robinson, J. ...	157	3	...	Ditto once; returned voluntarily twice.
Wells, W. ...	156	4	...	Ditto three times; returned voluntary once.
Smith, A. E. ...	162	1	...	Returned voluntarily.
Havna, J. ...	170	2	...	Ditto.
Cooper, G. ...	143	1	1	Ditto.
McCormick J. ...	160	1	...	Ditto.
Byrne, T. ...	177	2	...	Not apprehended.
Coben, A. ...	163	1	...	Ditto.

Enclosure 3.

Dr. GOLDSBORO' to the SECRETARY of the Marine Department.

SIR,—

Auckland, 15th May, 1880.

I have the honor to state that the health of the inmates of the Government Training School, Kohimarama, has been satisfactory since the date of my last report.

No deaths have occurred, and most of the cases have been of the ordinary type affecting boys in general.

One extremely severe case of dysentery occurred, and I found it necessary to remove the patient to the Provincial District Hospital for closer observation and better attention than I could possibly render him at the school. This I did under the sanction of the Hon. Mr. Hall, then in Auckland.

I made forty-five visits during this period; inspected the boys weekly; examined every boy on admission, and attended to the sanitary condition of the school. (Cases 180.)

Since the erection of the ward for isolating patients suffering from contagious skin diseases, &c., and the oven for fumigation and disinfecting the clothes and bedding, I am happy to report the cessation of itch, which formerly it was almost impossible to banish from the school.

One boy was admitted from the south with this complaint upon him, and he was maimed in the left hand, the greater portion of index and middle fingers having been amputated. Another has suffered from severe injury to the knee-joint (the left) in Germany, and was subsequently removed to the Provincial District Hospital. I consider him an unhealthy boy, and of low mental capacity.

In consequence of the constant breaking down of the Government steam launch, I have been compelled to visit the school by the road, portions of which are in a very bad condition in dry weather, in winter almost impassible and frequently dangerous.

The dormitory has been greatly benefitted, and the ventilation improved by the removal of the wooden and the substitution of iron bunks; it is still, however, overcrowded.

I have to reiterate my thanks to Captain Breton, the manager, for the assistance and kindness rendered to myself, and the aid given to the boys during my absence. By his prompt action and skill many cases that might have proved troublesome have been averted.

The average number of boys in the school during the period (nine months) was :—

1879.				1880.			
July	60	January	57
August	59	February	55
September	60	March	57
October	60				
November	58	Total average,	169
December	58	Three months	56½
Total average	355				
Six months...	59½				

The diseases most prevalent were—Laryngitis, colds and coughs, dysentery (1 case), abscesses in ears, abscess in thighs (2 cases), ditto in feet, stone bruises, enlarged glands, injury to ankle, diarrhoea, and scabies-itch.

I beg to request permission to remove severe and dangerous cases to the Provincial District Hospital should I deem it necessary, without waiting the delay of telegraphing.

Such cases have neither been frequent nor likely to be so, but emergencies may occur.

The schoolmaster has had a slight attack of enteric fever, necessitating rest and removal for a short time. He is now quite well and resumed his duties.

I have, &c.,

CHARLES F. GOLDSBORO', M.D., F.R.C.P., &c., &c.
Medical Officer.

The Secretary Marine Department,
Wellington.

RETURN showing the Total Ordinary Expenditure of the Marine Department during the nine months, ended the 31st March, 1880.

Nature of Expenditure.	Details of Expenditure.			Totals.			Grand Total.		
	£	s.	d.	£	s.	d.	£	s.	d.
Head Office :—									
Secretary ...	375	0	0						
Chief Clerk ...	262	10	0						
Clerk ...	150	0	0						
Clerk ...	105	0	0						
Messenger ...	45	0	0						
Marine Engineer ...	225	0	0						
Draftsmen ...	269	0	0						
Engineer Surveyor ...	225	0	0						
Local Engineer Surveyors ...	75	0	0						
Examiner of Masters and Mates ...	75	0	0						
Local Examiners ditto ...	168	15	0						
Inquiries into Wrecks and Casualties ...	202	9	0						
Survey of Unworthy Ships... ..	17	15	9						
				2,195	9	9	2,195	9	9
Harbours :—									
Manukau, —									
Salaries ...	472	0	0						
Contingencies ...	29	0	5						
				501	0	5			
Russell, —									
Salaries ...	220	10	0						
Contingencies ...	8	12	1						
				228	12	1			
Whangaroa, —									
Salaries ...	100	0	0						
				100	0	0			
Whangarei, —									
Subsidy to ferryman ...	37	10	0						
Contingencies ...	6	17	6						
				44	7	6			
Hokianga, —									
Salaries ...	318	0	0						
Contingencies ...	17	16	4						
				335	16	4			
Kaipara, —									
Salaries ...	521	19	0						
Repairs to Steam Launch ...	229	6	4						
Contingencies ...	146	9	11						
				897	15	3			
Waitara, —									
Salaries ...	84	7	6						
Contingencies ...	40	2	5						
				124	9	11			
Foxton, —									
Salaries ...	246	5	0						
Contingencies ...	35	19	4						
				282	4	4			
Rangitikei, —									
Salaries ...	112	10	0						
				112	10	0			
Wellington, —									
Salaries ...	1,676	18	11						
Contingencies ...	68	11	5						
				1,745	12	4			

RETURN showing the Total Ordinary Expenditure of the Marine Department, &c.—*continued.*

Nature of Expenditure.	Details of Expenditure.			Totals.			Grand Total.		
	£	s.	d.	£	s.	d.	£	s.	d.
Wairoa,—									
Salaries	66	9	4						
Collection of data for Sir J. Coode	336	16	9						
						403	6	1	
Wangawehi Light,—									
Maintenance	30	0	0			30	0	0	
Tauranga,—									
Salaries	270	0	3						
Contingencies	110	18	2			394	5	6	
Gisborne									
Salaries	266	5	0						
Contingencies	19	4	4						
Collection of data for Sir J. Coode	63	9	2			348	18	6	
Wairau,—									
Salaries	99	0	0						
Contingencies	81	1	2			180	1	2	
Picton,—									
Salaries	96	15	0						
Contingencies	8	11	8			105	6	8	
Nelson,—									
Salaries	971	5	0						
Repairs to Boat Landing	133	0	0						
Contingencies	31	19	0						
Removal of Buoy Rock	117	15	0			1,253	19	0	
Motueka,—									
Contingencies	28	0	0			28	0	0	
Waitapu,—									
Salaries	12	10	0						
Contingencies	22	0	0			34	10	0	
Riwaka,—									
Salaries	6	0	0			6	0	0	
Collingwood,—									
Salaries	25	0	0						
Contingencies	25	13	0			50	13	0	
Karamea,—									
Contingencies	19	15	6			19	15	6	
Westport,—									
Salaries	307	10	0						
Contingencies	144	19	5			452	9	5	
Greymouth,—									
Salaries	326	5	0						
Contingencies	168	18	10			495	3	10	
Hokitika,—									
Salaries	541	10	0						
Contingencies	69	12	11			611	2	11	
Okarito,—									
Salaries	33	6	8						
Contingencies	46	10	0			79	16	8	
Catlin's River—									
Salaries	93	15	0						
Contingencies	62	7	10			156	2	10	
Waikawa,—									
Salaries	37	10	0			37	10	0	
Port Chalmers Graving Dock,—									
Wages and Contingencies	1,202	7	4			1,202	7	4	
Waikouaiti,—									
Salaries	56	5	0						
Contingencies	9	15	1			66	0	1	
Kakanui,—									
Salaries	112	10	0			112	10	0	
Akaroa,—									
Salaries	18	15	0						
Contingencies	26	6	6			47	1	6	
Sumner,—									
Salaries	90	0	0						
Contingencies	1	9	10			91	9	10	
Kaiapoi,—									
Salaries	100	0	0						
Contingencies	3	14	0			103	14	0	

RETURN showing the Total Ordinary Expenditure of the Marine Department, &c.—*continued.*

Nature of Expenditure.	Details of Expenditure.			Totals.			Grand Total.		
	£	s.	d.	£	s.	d.	£	s.	d.
Kaikoura,—									
Salaries	56	5	0						
Buoys and Moorings	118	9	5						
Contingencies	4	0	0						
				178	14	5			
Martin's Bay,—									
Salaries	86	10	6						
Contingencies	10	13	0						
				97	3	6			
Stewart Island,—									
Salaries	7	10	0						
				7	10	0			
General Contingencies (unallocated)				67	3	11			
Port Lights				528	9	11			
							11,557	14	7
Lighthouses,—									
Salaries	4934	10	6						
Lightkeeper's Travelling Expense	7	18	0						
Oil	1390	7	7						
Stores and Contingencies	1229	4	7						
Lighthouse Artificer	140	0	0						
							7702	0	8
Departmental Travelling Expenses				257	6	8			
Coastal Buoys and Beacons				17	8	3			
Moorings for Gore Bay				33	7	0			
Charts				47	16	8			
Sundries				194	17	11			
Pension of Widow of late Lightkeeper Deck... ..				23	19	10			
							574	16	4
"Stella" s.s.				4503	3	11			
Less Ration Money received				8	0	0			
							4495	3	11
"Hinemoa" s.s.				7319	12	3			
Less Ration Money				53	19	10			
							7265	12	5
Naval Training School at Kohimarama—									
Salaries and Wages	560	5	11						
Rent of Station	132	0	0						
New Vessel (part cost)... ..	328	13	0						
Repairs, &c., to Buildings	91	8	6						
Provisions, Clothing, and Contingencies... ..	893	13	8						
							2006	1	1
Weather Reporting,—									
Officer in Charge	225	0	0						
Assistant	150	0	0						
Salaries of Reporters	380	18	5						
Contingencies	2	12	5						
							756	10	10
Grand Total							36,555	9	7

RETURN showing the Cost of Maintenance of the New Zealand Lighthouses during the Nine Months ended the 31st March, 1880.

Name of Lighthouse.	Salaries.			Oil.			Stores and Contingencies.			Totals.		
	£	s.	d.	£	s.	d.	£	s.	d.	£	s.	d.
Cape Maria van Diemen	281	16	8	117	7	5	32	10	0	431	14	1
Tiri Tiri	187	10	0	65	0	0	424	5	4	676	15	4
Ponui Passage	105	0	0	8	5	0	48	6	9	161	11	9
Bean Rock	112	10	0	4	11	0	2	16	0	119	17	0
Portland Island	289	18	3	72	11	0	40	6	7	402	15	10
Napier Bluff	193	15	0	23	8	2	9	1	9	226	4	11
Pencarrow Head	141	13	4	69	13	0	190	1	3	301	7	7
Somes Island	206	5	0	24	2	0	9	0	6	239	7	6
Manukau Heads	202	10	0	66	18	0	13	17	0	283	5	0
Brothers	396	5	3	91	11	0	45	2	11	532	19	2
Cape Campbell	195	0	0	66	6	9	46	1	10	307	8	7
Godley Head	250	11	7	43	2	6	75	16	6	369	10	7
Akaroa Head (4 months)	90	0	0	18	15	0	2	19	8	111	14	8
Moeraki	184	7	0	66	3	9	7	12	2	258	2	11
Taiaroa Head	195	0	0	54	2	6	14	16	9	263	19	3
Cape Saunders (4 months)	99	10	0	20	5	0	119	15	0
Nugget Point	215	0	0	93	0	0	31	3	9	339	3	9
Dog Island	298	6	8	87	11	3	21	9	9	407	7	8
Centre Island	307	1	4	107	1	3	19	6	8	433	9	3
Puysegur Point	284	12	5	123	4	0	182	11	6	590	7	11
Cape Foulwind	200	0	0	73	17	6	35	1	6	308	19	0
Farewell Spit	290	0	0	53	15	0	73	9	10	422	4	10
Nelson	207	18	0	34	16	6	3	6	7	246	1	1
Totals	4,934	10	6	1,390	7	7	1,229	4	7	7,554	2	8

† Includes £280 18s. 2d. for repairs to buildings, and £70 8s. 0d., cost of new paraffin burners. ‡ Includes £35 3s. 3d., cost of new paraffin burners.

RETURN showing the Quantity of Oil consumed at the Various Lighthouses in New Zealand during the Nine Months ended the 31st March, 1880.

Name of Lighthouse.	Gallons Consumed.
Cape Maria Van Diemen	626
Tiri Tiri	349
Ponui Passage	44
Portland Island	384
Napier Bluff	127
Pencarrow Head	371
Somes Island	129
Manukau Heads	355
Brothers	487
Cape Campbell	353
Godley Head	254
Akaroa Head (3 months)	100
Moeraki	352
Taiaroa Head	282
Cape Saunders (3 months)	108
Nugget Point	496
Dog Island	467
Centre Island	579
Puysegur Point	666
Cape Foulwind	394
Farewell Spit	308
Nelson	186
Total	7,397

DESCRIPTIVE RETURN of New Zealand Coastal Lighthouses.

Name of Lighthouse.	Order of Apparatus.	Revolving or Fixed.	Period of Revolving Light.	Colour of Light.	Tower, built of.	Dwellings, built of.	Date first Lighted.
Cape Maria van Diemen	1st order dioptric	Revolving	1'	White	Timber	Timber	24th Mar., 1879
	...	Fixed	...	Red, to show over Columbia Reef	...	"	...
Tiritiri	2nd	"	...	White	Iron	"	1st Jan., 1865
Ponui Passage	5th	"	...	"	Timber	"	29th July, 1871
	2nd	Revolving	30"	"	"	"	10th Feb., 1878
Portland Island	...	Fixed	...	Red, to show over Bull Rock	"	"	...

Pencarrow Head	2nd	"	...	White	Iron	"	1st Jan., 1859
Manukau Heads	3rd	"	...	"	Timber	"	1st Sept., 1874
Brothers	2nd	"	...	"	"	"	24th Sept., 1877
	...	Fixed	...	Red, over Cook Rock
Cape Campbell	2nd	Revolving	1'	White	...	"	1st Aug., 1870
Godley Head	2nd	Fixed	...	"	Stone	"	1st April, 1865
Akaroa	2nd	Flashing	10"	White	Timber	"	1st Jan., 1880
Moeraki	3rd	"	...	"	Timber	Timber	22nd April, 1878
Taiaroa Head	3rd	"	...	Red	Stone	Stone	2nd Jan., 1865
Cape Saunders	2nd	Revolving	1'	"	"	"	1st Jan., 1880
Nugget Point	1st	"	...	White	"	"	4th July, 1870
Dog Island	1st order catadioptric	Revolving	30"	"	"	"	1st Aug., 1865
Centre Island	1st order dioptric	Fixed	...	White, with red arcs overinshore dangers	Timber	Timber	16th Sept., 1878
Puysegur Point	1st	Flashing	10"	White	"	"	1st Mar., 1879
Cape Foulwind	2nd	Revolving	30"	"	"	"	1st Sept., 1876
Farewell Spit	2nd	"	1'	White, with red arc over Spit end	"	"	17th June, 1870
Nelson	4th	Fixed	...	White, with red arc to mark limit of anchorage	Iron	"	4th Aug., 1862

RETURN showing the number of Masters, Mates, and Engineers examined during the nine months ended the 31st March, 1880, distinguishing the Number of Successful and Unsuccessful Candidates.

CLASS OF CERTIFICATE.	AUCKLAND.			WELLINGTON.			DUNEDIN.			LYTTELTON.			THAMES.			TOTALS.		
	Passed.	Failed.	Total.	Passed.	Failed.	Total.	Passed.	Failed.	Total.	Passed.	Failed.	Total.	Passed.	Failed.	Total.	Passed.	Failed.	Total.
Foreign-going Masters and Mates	17	12	29	9	7	16	20	...	20	46	19	65	
Home-Trade Masters and Mates	13	2	15	6	3	9	3	...	3	22	5	27	
River Steamer Masters	3	2	5	1	...	1	3	...	3	7	2	9	
Sea-going Engineers	2	1	3	2	...	2	4	1	5	
River Steamer Engineers	9	...	9	3	...	3	2	1	3	3	2	5	17	3	20	
Totals	44	17	61	20	10	30	26	1	27	3	2	5	3	...	96	30	126	

RETURN of Steam Vessels to which Passenger Certificates have been issued in New Zealand during the Nine Months ended the 31st March, 1880.

Name of Vessel.	Tons Register.	Horse-power of Engines.	Nature of Propeller.	Class of Certificate.	Nature of Engines.	Remarks.
Akaroa ...	43	28	Screw	Sea-going	Compound	
Albion ...	591	180		"	Condensing	
Anne Milbank ...	44	24	Paddle	Extended River	Non-condensing	
Antrim ...	35	30	"	River	"	
Arawata ...	623	300	Screw	Sea-going	Compound	
Argyle ...	126	40	"	"	"	
Beautiful Star ...	126	30	"	"	Condensing	
Bella ...	12	12	"	Extended River	Non-condensing	
Black Diamond ...	9	20	"	River	"	
Blanche ...	8	9	"	"	"	New Vessel
Charles Edward ...	89	60	"	Sea-going	Condensing	
City of Cork ...	29	40	Paddle	River	"	
Clyde ...	27	32	Twin-screw	Extended River	Non-condensing	
Clyde ...	34	12	Screw	River	"	
Comarang ...	152	70	Paddle	"	Condensing	
Coromandel ...	68	25	Screw	Sea	Compound	
Delta ...	60	30	Paddle	River	Non-condensing	
Devonport ...	23	12	"	"	"	
Dispatch ...	38	40	"	Sea-going	Condensing	
Durham ...	54	30	Screw	Extended River	Compound	
Enterprise No. 2 ...	61	32	Paddle	"	Non-condensing	
Effort ...	13	12	"	River	"	
Eclipse ...	8	8	Screw	"	"	
Fairy ...	33	15	"	Extended River	"	
Fingal ...	23	13	"	"	"	New Vessel.
Gemini ...	11	7	Twin-screw	River	Non-condensing	
Glengel ...	156	75	Screw	Sea-going	Compound	
Go-Ahead ...	82	30	"	"	"	
Grafton ...	270	100	Twin-screw	"	"	
Hannah Mokau ...	35	15	Screw	River	Non-condensing	
Hawea ...	461	160	"	Sea-going	Compound	
Huia ...	107	25	"	"	"	
Ida ...	12	10	"	River	Non-condensing	
Ino ...	24	12	Twin-screw	Extended River	"	
Iona ...	159	65	Screw	Sea-going	Compound	
Jane Douglas ...	75	20	"	"	"	
Jane Williams ...	33	15	"	River	Non-condensing	
Kakanui ...	57	22	"	Sea-going	Compound	New Vessel.
Kati Kati ...	15	9	"	River	Non-condensing	
Kennedy ...	138	50	"	Sea-going	Compound	
Kina ...	39	15	"	Extended River	Condensing	
Kiwi ...	133	30	"	Sea-going	Compound	
Koputai ...	5	120	Paddle	"	"	
Kopuru ...	28	20	Screw	River	Non-condensing	New Vessel.
La Buona Ventura ...	4	4	Screw	River	Non-condensing	Steam Launch.
Lady Barkley ...	30	25	Paddle	Extended River	Condensing	
Lady Bird ...	287	70	Screw	Sea-going	"	
Lallah Rookh ...	23	14	Paddle	Extended River	Non-condensing	
Lilie ...	10	10	"	River	"	
Lioness ...	26	60	"	Sea-going	Condensing	
Lily ...	4	6	Screw	River	Non-condensing	
Lily ...	20	10	Twin-screw	Extended River	"	Steam Launch.
Little Irishman ...	6	8	Screw	River	"	New Vessel.
Lyttelton ...	86	25	Paddl	Sea-going	Condensing	
Lyttelton ...	6	14	Twin-screw	Extended River	Non-condensing	Steam Launch.
Manaia ...	62	30	Paddle	"	"	
Manawatu ...	103	45	"	Sea-going	Condensing	
Maori ...	118	60	Screw	"	"	
Mensahib ...	6	4	"	River	Non-condensing	
Minnie Casey ...	43	25	"	Extended River	Compound	
Mohaka ...	20	12	"	"	Non-condensing	
Moa ...	49	25	"	River	Condensing	
Mountaineer ...	66	25	Paddle	"	Compound	
Mullogh ...	46	15	Screw	"	Non-condensing	
Murray ...	78	18	"	Sea-going	Condensing	
Napier ...	44	24	"	"	Compound	
Noko ...	15	9	"	Extended River	Non-condensing	
Oregon ...	20	16	Paddle	River	"	
Oreti ...	117	43	Screw	Sea-going	Compound	
Osprey ...	28	10	Paddle	Extended River	Non-condensing	
Patea ...	51	22	Twin-screw	Sea-going	Compound	
Pearl ...	14	5	Screw	River	Non-condensing	
Pelorus ...	18	12	"	"	"	
Penguin ...	442	180	"	Sea-going	Condensing	
Peninsula ...	31	18	Paddle	River	Non-condensing	
Portobello ...	11	10	"	"	"	
Rangatira ...	186	50	Screw	Sea-going	Compound	
Result ...	18	23	"	Extended River	Non-condensing	
Result ...	13	10	Paddle	"	"	
Rangiriri ...	30	30	Stern-wheel	River	"	
Ringarooma ...	623	300	Screw	Sea-going	Compound	Steam launch.
Riro Riro ...	4	4	"	River	Non-condensing	
Rose Casey ...	99	40	"	"	Compound	
Rosina ...	19	14	"	Extended River	Non-condensing	
Rotomahana ...	138	45	"	Sea-going	Condensing	
Rotorua ...	576	172	"	"	Compound	
Rowena ...	74	30	"	"	"	
Samson ...	111	70	"	"	Condensing	
Scotchman ...	20	10	"	River	Non-condensing	
Shag ...	31	27	"	Sea-going	"	
Sir Donald ...	29	12	"	Extended River	Condensing	

RETURN of Steam Vessels to which Passenger Certificates have been issued, &c.—*continued.*

Name of Vessel.	Tons Register.	Horse-power of Engines	Nature of Propeller.	Class of Certificate.	Nature of Engines.	Remarks.
Southern Cross ...	139	50	"	Sea-going	Compound	
Staffa ...	40	25	"	Extended River	"	
Star of the South ...	175	45	"	Sea-going	"	
Stormbird ...	67	30	"	"	Condensing	
Tainui ...	47	22	Paddle	Extended River	Non-condensing	
Taiaroa ...	228	110	Screw	Sea-going	Compound	
Takapuna ...	58	20	Paddle	River	Non-condensing	
Tam O'Shanter ...	10	7	Screw	"	"	
Tangihua ...	20	15	"	"	"	
Tararua ...	563	140	"	Sea-going	Compound	
Te Aroha ...	50	14	Paddle	River	Non-condensing	
Titan ...	21	55	"	Extended River	Condensing	
Tongariro ...	39	10	"	"	Non-condensing	
Tongariro ...	62	25	"	"	"	
Tui ...	64	20	Screw	Sea-going	Compound	
Vesta ...	3	5	"	River	Non-condensing	New Vessel.
Vivid ...	13	13	"	"	"	New Vessel.
Waipara ...	70	30	Twin-screw	Sea-going	"	
Waitaki ...	228	90	Screw	"	Compound	
Waitara ...	11	15	"	Extended River	Non-condensing	
Wakatu ...	75	30	"	Sea-going	Compound	New Vessel.
Wakatipu ...	1,158	256	"	"	Compound	
Wallabi ...	101	25	"	"	Condensing	
Waiau ...	3	3	"	River	Non-condensing	New Vessel
Wallace ...	64	50	Paddle	Sea-going.	Condensing	
Wanaka ...	277	120	Screw	"	Compound	
Wanganui ...	165	50	"	"	Condensing	
Wellington ...	261	80	"	"	"	
Total, 119 Vessels ...	12,036	4,650				

RETURN showing the Expenditure on New Lighthouses, &c., out of Immigration and Public Works Loan during the nine months ended the 31st March, 1880.

Nature of Expenditure.	Amount.
Akaroa Head Lighthouse ...	£ s. d. 1530 9 9
Cape Saunders " ...	1834 9 11
Hokitika " ...	171 0 5
Stephen's Island " ...	1 5 6
Marine Store ...	425 15 0
Total ...	£3,963 0 7

RETURN showing the Fees, &c., under the Shipping and Seamen's Act (except Light Dues), the Merchant Shipping Act, the Fish Protection Act, and for Sale of Charts and Dues collected for the use of the Otago Graving Dock during the Nine Months ended the 31st March, 1880.

Nature of Receipts.	Amount.
Shipping and Seamen's Act, 1877 ...	£ s. d. 1,278 18 7
Merchant Shipping Act ...	81 12 9
Fish Protection Act ...	111 0 0
Sale of Charts, and New Zealand Pilots ...	35 19 6
Dock Dues ...	2,397 0 0
Total ...	£3,904 10 10

RETURN of Masters, Mates, and Engineers to whom Certificates of Competency have been granted, from
1st July, 1879, to 31st March, 1880.

Name of Person.	Rank for which granted.	Class of Certificate.	Date of Issue.	Number.
Edward Buley ...	Second Mate	Foreign Trade	5th July, 1879	196
Edward Finlayson ...	First Mate	"	14th " " *	197
Ole Helgeson ...	Master Ordinary	"	28th " " *	153
Robert Carnie ...	Second Mate	"	28th " " *	198
Hugh Hocking Raddon ...	Master Ordinary	"	15th Aug., " *	177
Thomas Richards ...	"	"	19th " " *	129
Kenneth McKenzie ...	Only Mate	"	19th " " *	199
William James Singleton ...	First Mate	"	22nd " " *	200
Thomas Masters ...	Master Ordinary	"	22nd " " *	201
Alfred Feast ...	First Mate	"	30th " " *	202
Alexander Mathieson ...	Second Mate	"	23rd " " *	204
Anton Irens Anderberg ...	Only Mate	"	24th " " *	205
Robert Hunter Catecheon ...	Master Ordinary	"	4th Oct., " *	91
James Alfred Bysantson ...	Only Mate	"	4th " " *	206
Horatio Charnock Hayward	Master Ordinary	"	18th " " *	207
Roderick Currie ...	"	"	20th " " *	208
George Wilson ...	Second Mate	"	20th " " *	209
Charles Walter Taylor ...	Master Ordinary	"	20th " " *	210
John Johnson ...	First Mate	"	3rd Nov., " *	211
John Thomas Cartwright ...	"	"	3rd " " *	133
John Horne ...	Master Ordinary	"	3rd " " *	146
William Thompson ...	Only Mate	"	18th " " *	313
William Donald ...	"	"	18th " " *	214
Colin McDonald ...	Master Ordinary	"	18th " " *	97
John McKenzie ...	Only Mate	"	18th " " *	212
Arthur Charles Horne ...	"	"	27th " " *	203
Thomas Angel Fry ...	"	"	9th Dec., " *	216
John Fairchild ...	Master Ordinary	"	16th " " *	217
William Waller ...	Second Mate	"	17th " " *	218
George Alfred Marks ...	Master Ordinary	"	10th Jan., 1880*	219
George William Ames ...	Only Mate ...	"	19th " " *	220
John Matthew Adams ...	"	"	19th " " *	221
William Harris ...	"	"	25th Feb., " *	223
William Wallace Wilson ...	Master Ordinary†	"	25th " " *	222
Henry Hudson ...	Only Mate	"	16th March, " *	226
Walter Manning ...	Master Ordinary	"	16th " " *	215
William Thomas Minchem ...	"	"	16th " " *	224
Walter James Rogers ...	"	"	16th " " *	176
George Mackay ...	"	"	16th " " *	225
William George Loudon ...	"	"	16th " " *	94
Harrison Douglas ...	"	"	31st " " *	227
Carl Julius Neuhaus ...	Only Mate	"	31st " " *	228
Charles Sievwright ...	Second Mate	"	31st " " *	230
August John Paesch ...	Only Mate	"	31st " " *	229
George Friedrich August Carl Baron Von Schoen ...	Master Extra	"	31st " " *	125
Arnold Claudius Schnauer ...	Master	Home Trade	12th Aug., 1879	5,176
Edward Charles Windsor ...	Mate	"	19th " " "	5,177
Charles Samuel Johnson ...	"	"	5th Sept., " "	5,178
Bertrand Napoleon ...	"	"	15th " " "	5,179
John Graham ...	Master	"	29th " " "	5,180
John Thomas Collings ...	"	"	4th Oct., " "	5,181
Thomas Angel Fry ...	"	"	4th " " "	5,182
August Johnson ...	Mate	"	18th " " "	5,183
Peter Douglas ...	Master	"	20th " " "	5,184
John Cooper ...	"	"	30th " " "	5,185
Thomas Henry Richards ...	"	"	14th Nov., " "	5,186
Frederick Maundrell Alexander ...	"	"	18th " " "	5,187
George McLeod ...	"	"	9th Dec., " "	5,189
Duncan Chisholm ...	Mate	"	9th " " "	5,188
Nicolas Sciascia ...	Master	"	16th " " "	5,043
Samuel Charles Bulkeley ...	"	"	15th " " "	5,190
John Jeffery Cullen ...	"	"	15th Jan., 1880	5,191
Richard Baumgart ...	"	"	15th " " "	5,192
Francis Clarence Tayler ...	"	"	25th Feb., " "	5,193
Louis Sorensen Dean ...	"	"	25th " " "	5,194
George Saunders ...	"	"	31st March " "	5,194
Campbell Campbell ...	1st Class Engineer	Foreign Trade	12th Aug., " *	63
William Isaac Masters ...	2nd Class "	"	15th " " *	64
William Laird ...	1st Class "	"	3rd Nov., " *	13
John Gilroy ...	2nd Class "	"	14th " " *	65

* Issued under the provisions of Her Majesty's order, in Council, of the 12th Feb., 1876, and have the same force as similar certificates granted by the Board of Trade.

† Fore-and-aft-rigged vessels only.

RETURN of the Certificates of Service issued to Masters and Engineers in New Zealand during the
Nine Months ended the 31st March, 1880.

Name of Person.	Rank for which issued.	Class of Certificate.	Date of Issue.	Number.
James Denis Kelly ...	Master ...	Home Trade	12th Aug., 1879	2,480
George Campbell ...	"	"	17th Nov., "	2,481
William Scurrah ...	"	"	16th Dec., "	2,482
George Buchanan ...	"	"	6th Jan., 1880	2,483
Harry Roberts Burt ...	"	"	6th " "	2,484
John Symons ...	Engineer	2nd class	9th July, 1879	1,034
William Ballard ...	"	"	22nd Oct. "	1,035

STATEMENT showing the Amount of Light Dues collected in New Zealand during the Nine Months ended the 31st March, 1880.

Name of Port at which Collected.					Amount Collected.
					s. d.
Auckland	1,599 13 10
Onehunga	93 6 4
Whangaroa	10 17 6
Kaipara	34 14 3
Thames	6 10 1
Russell	96 5 5
Mongonui	2 14 2
Hokianga	9 3 4
Whangarei	11 2 0
Tauranga	56 17 10
Poverty Bay	106 18 5
New Plymouth	52 0 8
Wanganui	63 17 5
Rangitikei	0 9 5
Foxton	18 10 0
Patea	6 7 1
Wellington	1,754 19 9
Napier	243 13 5
Wairau	17 1 4
Picton	82 1 4
Havelock	4 6 9
Kaikoura	11 16 7
Nelson	458 1 3
Westport	116 11 0
Greymouth	103 5 6
Hokitika	34 9 11
Lyttelton	1,951 12 4
Timaru	83 17 2
Riverton	9 13 7
Oamaru	9 10
Kakanui	10 10
Dunedin	2,027 3 5
Invercargill	19 8 4
Bluff	489 3 11
Total	£9,404 14 0
Corresponding period of last year	£10,389 18 2

RETURN of Certificates of Competency that have been issued to Masters and Engineers of River Steamers from 1st July, 1879, to 31st March, 1880.

Name of Person.	Rank for which Issued.	Date of Issue.	No. of Certificate.
Charles Evrett	Master	5th Aug., 1879	029
George Spencer	"	15th Oct., "	3,031
Charles William Gentry	"	" " "	3,032
Henry Bush	"	" " "	3,033
Lionel De Labrosse	"	17th Dec., "	3,034
Amos McKegg	"	25th Feb., 1880	3,035
Thomas Pounder	Engineer	5th July, 1879	1,310
Thomas Morgan	"	31st " "	1,311
James Thompson	"	" " "	1,312
William Smart	"	12th Aug., "	1,313
James Newland	"	14th " "	1,314
Robert Harris	"	23rd Sep., "	1,316
Thomas Ballantine	"	" " "	1,315
John Carey	"	28th Oct., "	1,317
John Edward Friend	"	3rd Nov., "	1,318
Luke Blumer	"	15th Dec., "	1,319
John Brown	"	6th Jan., 1880	1,320
Samuel Pedlar	"	21st " "	1,321
August Carl Kulsch	"	" " "	1,322
William Brown	"	27th " "	1,323
Samuel Hodge	"	25th Feb., "	1,324
William Dashwood	"	" " "	1,325
George Charles Herrick	"	31st March, "	1,326
George Plaskett	"	" " "	1,327

STATEMENT showing the Amount of Pilotage, Port Charges, &c., collected in New Zealand during the Nine Months ended the 31st March, 1880.

Port at which Collected:						Pilotage.		Port Charges, &c.		Total.	
						£	s.	d.	£	s.	d.
Auckland*	1,046	9	10	653	5	7
Onehunga	9	17	0	94	7	6
Kaipara	271	8	5	224	15	9
Thames*	15	6	10	40	19	11
Russell	67	0	8
Mongonui	6	18	0
Hokianga	86	4	7
Tauranga	36	16	4
Poverty Bay	37	4	6
New Plymouth*	18	7	9	15	17	8
Waitara	29	11	0	28	6	9
Wanganui*	377	17	1
Rangitikei	5	19	10
Foxton	92	5	8
Patea*	12	8	3	5	19	0
Wellington	555	4	5	1,106	17	11
Napier*	715	3	6	286	4	8
Wairoa	92	9	9
Havelock	1	18	5
Nelson	449	8	11
Hokitika	19	10	4
Lyttelton*	2,846	18	6	1,594	5	3
Timaru*	20	5	7
Oamaru*	266	7	10
Kakanui	1	9	8
Dunedin*	2,008	15	0	1,150	14	2
Moeraki	1	9	8
Waikouaiti	1	3	0
Port Molyneux	0	10	8
Invercargill*	59	13	6
Bluff*	444	6	4	338	6	8
Riverton*	6	18	0
Totals	£9,252	10	6	£5,892	19	2
										£15,145 9 8	

* Revenue of Harbour Boards.

RETURN of Wrecks and Casualties to Shipping reported to the Marine Department from the 1st July, 1879, to the 31st March, 1880.

Date of Casualty.	Name of Vessel; also, Age and Class.	Reg. No.	Number of		Nature of Cargo.	Nature of Casualty.	Number of Lives Lost.	Place where Casualty happened.	Wind.		Finding of Court of Inquiry.	Name of Master.
			Crew.	Passengers.					Direction.	Force.		
1879, July 3	Jane Anderson, 11 years	96	6	...	Guano	Stranded; partial loss	...	North Spit, New River, N.Z.	East	Strong breeze	Vessel stood too long on Northern tack	Simon Saunders.
" 11	Day Dawn, 12 years	24	3	...	Ballast	Stranded	...	Ward's Island, in Wellington Harbour	S.E.	Fresh gale	Vessel anchored too near the Island	Henry Hansen.
" 13	Richard and Mary, 5 years	44	3	...	Coals	total loss Stranded; partial loss	...	North Spit of Rangitikei River	S.S.E.	Strong breeze	Master mistook Rangitikei River for the Manawatu, and there was insufficient water in the former river for the vessel	William Miller.
" 14	{ Lake Michigan, 3 years Sarah }	{ 25 6 }	{ 4 2 }	{ }	{ Ballast ... }	{ Collision; partial loss ... }	{ }	{ About one mile North of Tiri Tiri, N.Z. Three miles South-west of Opunake }	{ S.S.E. Southerly }	{ Light ... }	{ Sarah did not show her light in time Heavy weather caused vessel to spring a leak }	{ John Kingdon. William Lovendale William Andrews. }
" 19	Arthur Wakefield, 6 years	45	4	...	Wheat	Foundered total loss	...	On the bar of Otago harbour	N.E.	Light.	There was a series of mistakes and errors of judgment.	David Bruce Inglis.
" 21	Benares, 2 years; 100 A1.	1646	31	...	General	Stranded; partial loss	...				It was a mistake to send a vessel of the Benares' draught of water to this harbour in the present state of the bar. Being there, it was a mistake to full load her, as vessels drawing more than 19 feet are subject to more than ordinary risks in entering and departing from the harbour. The Harbourmaster should not have assumed command. when the ship began to bump, the pilot at the time being in charge, and the master did wrong in allowing it, and repeating his orders. After the ship stranded, the tug should not have left her helpless for so many hours. The pilot was in error in starting an hour after the appointed time, and after the tide at the bar was ebbing. The stopping of the tug when the master thought the tow-line had parted, was the immediate cause of the subsequent confusion, which was intensified by the divided command. The master of the tug should not have stopped but have gone dead slow, until he had distinct orders from the pilot what to do. Note.—One of the nautical assessors did not agree with the decision that it was wrong for the Harbourmaster to assume command after the vessel bumped, and for the pilot to start at the time he did.	

July 24	Heather Bell, 13 years	Cutter	24	3	...	Ball	Stranded; total loss	...	Jackson Reef near Cape Colville, Auck- land	S. W.	[Strong,	Vessel not put about soon enough.	Josa Bruno
" 24	Energy, 2 years	Schooner	72	6	...	Maize	Stranded; partial loss	...	Kandavan Reef, Fiji Group	S. S. E.	Strong gale	Casualty caused by strong set of tide.	Sammel Richard Savory.
Aug. 4	Myrtle, 1 year	Brigantine	167	9	3	Copra, &c.	Stranded; partial loss	...	Lat. 19° S., long. 174° 48' W.	W. by S.	Moderate breeze	Vessel kept too close in, there being no break on the reef owing to the water being unusually smooth.	Wm. Solloway Lane.
" 6	Garibaldi, 9 years	Schooner	51	4	...	Timber	Stranded; total loss	...	Southern extremity of North Spit, Hoki- tika River	Westerly	Moderate	Vessel grounded on a shoal not marked by beacons.	Olof Johnson.
" 8	Canny Scot, 14 years	Barque	328	9	...	Coals	Leaky	E. N. E.	Strong	Vessel sprang a leak through one of hold beam fastening bolts becoming loose while on passage from Newcastle to Lyt- telton, and she had to put into Nelson.	Wm. H. Manson
" 12	Eliza Firth, 10 years	Brigantine	143	Loss of life only	1	50 miles N. W. of Hokitika	East	Strong gale	Man killed by main boom falling on him, hooks having given way.	George Philip Stevens.
Sept. 6	Kate McGregor, 5 years	Schooner	65	4	...	Timber	Stranded; partial loss	...	On beach about 100 yards east of break- water at entrance to port of Napier	North	Strong breeze	Master committed error in judgment in overrunning his distance, and not bringing up in sufficient time to take soundings.	Kenneth Mc- kenzie.
" 8	Laurel, 3 years	Schooner	78	6	...	Timber	Sprung a leak and abandoned; total loss	...	At sea, Kaikoura, bearing W. by N., 20 miles distant	S. W.	Fresh breeze	Vessel sprang a leak, and was abandoned	Thomas Swede.
" 11	Charles Edward (p.s.), 11½ years	Schooner	90	18	13	General	Stranded; partial loss	...	Mouth of the Grey River	S. W.	Light	Insufficient water on the bar	Thomas Whit- well.
" 1	Shepherdess, 7 years	Schooner	30	3	Stranded; total loss	1	Constant Bay. Char- leston, County of Butler	...	Calm	Heavy rollers breaking into the bay caused vessel to carry away her moor- ings and drift ashore.	Thomas Herbert. John Bilby.
" 17	Stormbird (s.s.), 25 years	Schooner	69	13	7	General	Stranded; no damage	...	North beach, inside bar, Manawatu River, West Coast, N.Z.	...	Calm	Vessel grounded on a spit recently formed	Peter Doile
" 19	Messenger, 25 years	Barque	925	20	...	Coal bal- last	Stranded; total loss	...	On Farewell Spit, Cook Strait, N.Z.	North	Light	Master committed grave errors of judg- ment in keeping so near the shore, relying entirely on coast bearings, and not taking soundings. After the ves- sel missed stays, proper efforts were made to avert the wreck and to save life	Edward Miles
" 21	Lytelton (p.s.) 20 years	Schooner	86	10	...	General	Stranded; partial loss	...	End of South Spit at entrance to Hoki- tika River	N. N. W.	Moderate gale	Being unable to ride at anchor owing to gale, vessel was run ashore to save life	John Scott
" 24	Angusta, 8 years	Brigantine	138	7	5	Ballast	Loss of life only	1	Hokitika bar	N.	Moderate breeze	Heavy sea struck vessel and washed a boy overboard	William Smith
Oct. 4	Clematis, 7 years	Ketch	67	N.Z. pro- duce	Loss of life only	1	25 miles south Cape Foulwind	Vessel stranded on North Spit of Moka River, as owing to heavy sea on bar master lost command of her	John Russell
" 14	Hannah Moka (s.s.), 16 months	Ketch	35	4	...	General	Stranded; partial loss	...	North Spit of Moka River	N. E.	Light	Master expected to find slack water, when there was a current which set vessel to the rock	Eugene M'Carthy
" 18	Huia (s.s.), 1 year	Schooner	90	General	Stranded; partial loss	...	On a rock in Tory Channel	...	Calm		James Willis

RETURN of Wrecks on which Inquiries have been held, &c.—continued.

Date of Casualty.	Name of Vessel; also, Age and Class when known.	Reg.	Number of		Nature of Cargo.	Nature of Casualty.	Number of Lives Lost.	Place where Casualty happened.	Wind.		Finding of Court of Inquiry.	Name of Master.
			Crew.	Passengers.					Direction.	Force.		
" 22	Wellington (s.s.), 16 years	Schooner	279	...	General	Breaking of the piston rod	...	Approaching entrance to Wellington harbour	Piston rod broke when it had been welded	John Anderson
" 24	Stormbird (s.s.), 25 years	Schooner	69	...	General	Loss of life only	1	In Wellington harbour	Man fell overboard when securing the anchor	Peter Doile
" 27	Sarah Pile, 15 years	Brigantine	115	...	Ballast	Loss of life only	1	Off Cape Egmont about 6 miles	N.W.	Moderate breeze	Loss caused by missing stays in consequence of heavy ground swell	William Francis
Nov. 12	Helen and Jane, Melbourne, A. I 1 year	Schooner	60	4	Oats	Stranded; total loss	...	Mussel Beach, Te Wae-wae Bay, Foveaux Strait	E.N.E.	George Sumpter
" 15	Minchaha, 2 years	Schooner	86	9	Island Produce	Stranded; total loss	...	Rorotonga	E.S.E.	Moderate	...	Francis Morton. Garroway.
" 20	Rotomahana, s.s., A1 100 Lloyds; 6 months	Schooner	865	135	General	Loss of life only	1	Lat. 33° 15' S, long. 153° 33' E.	S.W.	Hurricane	Heavy sea came on board and washed man over	Thomas Underwood.
" 22	Mary Mildred, 24 years	Barque	460	16	Cattle	Stranded; partial loss	...	In Auckland Harbour	North	Fresh	Pilot in charge did not round to in time	John Broomfield.
" 22	John Watson, A1 Lloyds; 4 years; 10 years	Three Masted Schooner	209	9	Coal	Stranded	...	Off coast, about 20 miles south of Timaru	Calm	...	Vessel struck on Pabiti Reef, and subsequently went down. No blame attached to Master	Robert Storm.
" 23	Tui, s.s., 4 years	Schooner	64	8	General	total loss; Stranded; partial loss	...	West Ledge at entrance to Wellington Harbour	S.S.E.	Moderate breeze	Culpable neglect of Master in leaving direction of vessel and taking helm while in position of danger. His certificate suspended for three months, and he ordered to pay costs of inquiry Grounded on bar when entering	Thomas Holmes.
" 25	Nelson, 3½ years	Schooner	56	5	Coal	Stranded; partial loss	...	North Spit, at entrance to Waitara River	N.N.W.	Strong breeze	...	Olaf Johnson.
Dec. 16	Huron Belle, 16 years	Ketch	42	4	Cement and Timber	Stranded; total loss	...	Goat Island, Dunedin Harbour	N.E.	Fresh	Wind dropped as vessel was passing through the Narrows	Benjamin Bern.
" 22	Jane Anderson, 11 years	Schooner	96	6	Sleepers	Stranded; partial	...	Manawatu Bar	N.N.W.	Light	Bar had silted up unknown to Pilot	Simon Saunders.
" 28	Vindex	Schooner	40	Collision; partial loss	...	Off North Head, Auckland Harbour	N.	Light	Collision caused by steamer shaving too close to Vindex, coupled with wheel chains giving way	...
"	Tam O'Shanter, s.s., 4 years	Cutter	22	2	General	"	"	Light	...	Michael Leman.

1880.	Rotomohana, s.s. AA 1, 100 Lloyds, 7 months	Schooner	865	63	350	Coal	Stranded; slight damage	...	Rock off Great Bar- rier Island, Hauraki Gulf	S.W.	Eight breeze	Thomas Under- wood.
Jan. 1												
" 3	Prairie, 34 years	Brig	139	7	...	Ballast	Stranded; total loss	...	Kaipara Heads	Variable	...	John Crawford Hiscox. James Malcolm.
" 13	Penguin, s.s., 15 years	Schooner	442	31	70	General and Coal	Stranded; slight damage total loss	...	Tauranga Harbour	Easterly	Gale	Vessel grounded when entering harbour
" 23	Progress, 2 years	Brigantine	210	8	...	Ballast	Stranded; total loss	...	Near Muka Muka Rocks, Falliser Bay	Calm	Calm	Samuel Hyne.
" 28	Sophia	Schooner	200	8	1	Stone	Stranded; partial loss	...	Bull Rock, East Coast North Island, New Zealand	E.S.E.	Light	William Burk.
Feb. 20	Clyde, s.s. 2 years.	Ketch	34	5	14	General	Stranded; partial loss	...	Wairoa Bar, Hawkes Bay	Robert Baxter.
Feb. 21	Beautiful Star, s.s., 18 years	Schooner	146	15	10	General	Loss of life	1	Shag Point	N.E.	Light	Frederick Jones.
" 27	Sophia R. Luhrs, 6 years	Barque	661	13	5	Coal	Stranded; partial loss	...	Sunken rock about 1/4 mile S.E. of the reef on the western point Lyell Bay, Cook Strait	N.N.W.	Fresh breeze	John Paton.
Mar. 5	Caledonia, 2 years.	Schooner	58	5	4	General	Stranded partial loss	...	Island of Knango, lat. 20-198 S.; lon. 174-14 W	N.N.W.	Very hard	William Lamb.
Mar. 10	Energy, 6 years	Cutter	12	2	...	Sulphur	Stranded; total loss	...	White Island, Bay of Plenty	S.	Strong gale	Hamiora Arona.
" 20	Saxon, 4 years	Schooner	58	4	...	Timber	Stranded; partial loss	...	North Spit, Waima- kari Bar	S.E.	Light	George McKen- zie.
" 21	Rosannah Rose, 33 years	Schooner	130	7	...	General	Stranded; total loss	...	Mouth of the Ure River, about 6 miles from Flaxbourne, East Coast Middle Island of New Zea- land	S.S.E.	Whole gale	John Anderson.

The sending of the Rotomohana on a pleasure excursion, with a large number of passengers, to a place seldom visited by large steamers, and prescribing a route by a channel not usually employed, was highly injudicious and reprehensible; and the engagement of a pilot who did not understand the chart was blameable, but the responsibility did not rest with the master

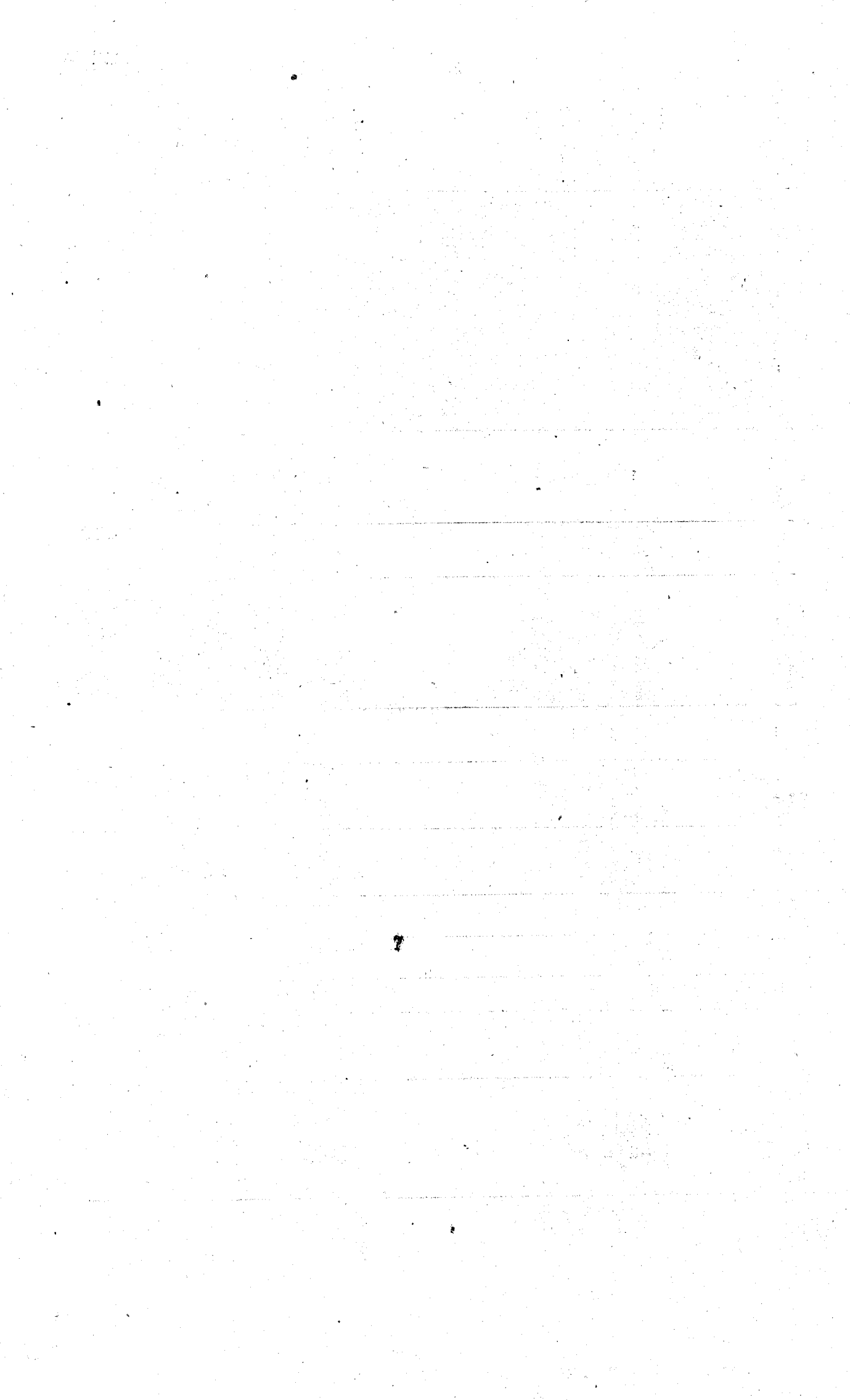
Casualty caused by failure of wind

Vessel grounded when entering harbour

Casualty caused by master thinking he had a flood tide when there was only an ebb
Master was guilty of default, as although the Portland Island Light-house was seen at 2 p.m. on the 28th, and its bearing observed, no other observation of it was made until 9.30 p.m. When first observed it bore N.N.W., and ship's course was N.N.E., and she was going about 4 knots an hour; thus even an occasional notice of her position by her steering and the bearing of light would have shown that she was not keeping her N.N.E. course, but was setting inshore. The lead was not hoive. Master's certificate suspended for one month, and he was ordered to pay costs of inquiry
Casualty caused by heavy sea striking vessel when running in over bar.

Master did not act prudently; but as rock was not defined on the chart, he was exonerated from blame

Wind failed when vessel was entering the river
The principal sails having blown away, the vessel was beached to save life and property



NEW ZEALAND LIGHTHOUSE CHART

OF
GENERAL COAST LIGHTS
AND
PRINCIPAL HARBOUR LIGHTS

COMPILED FOR THE
Marine Department N.Z.

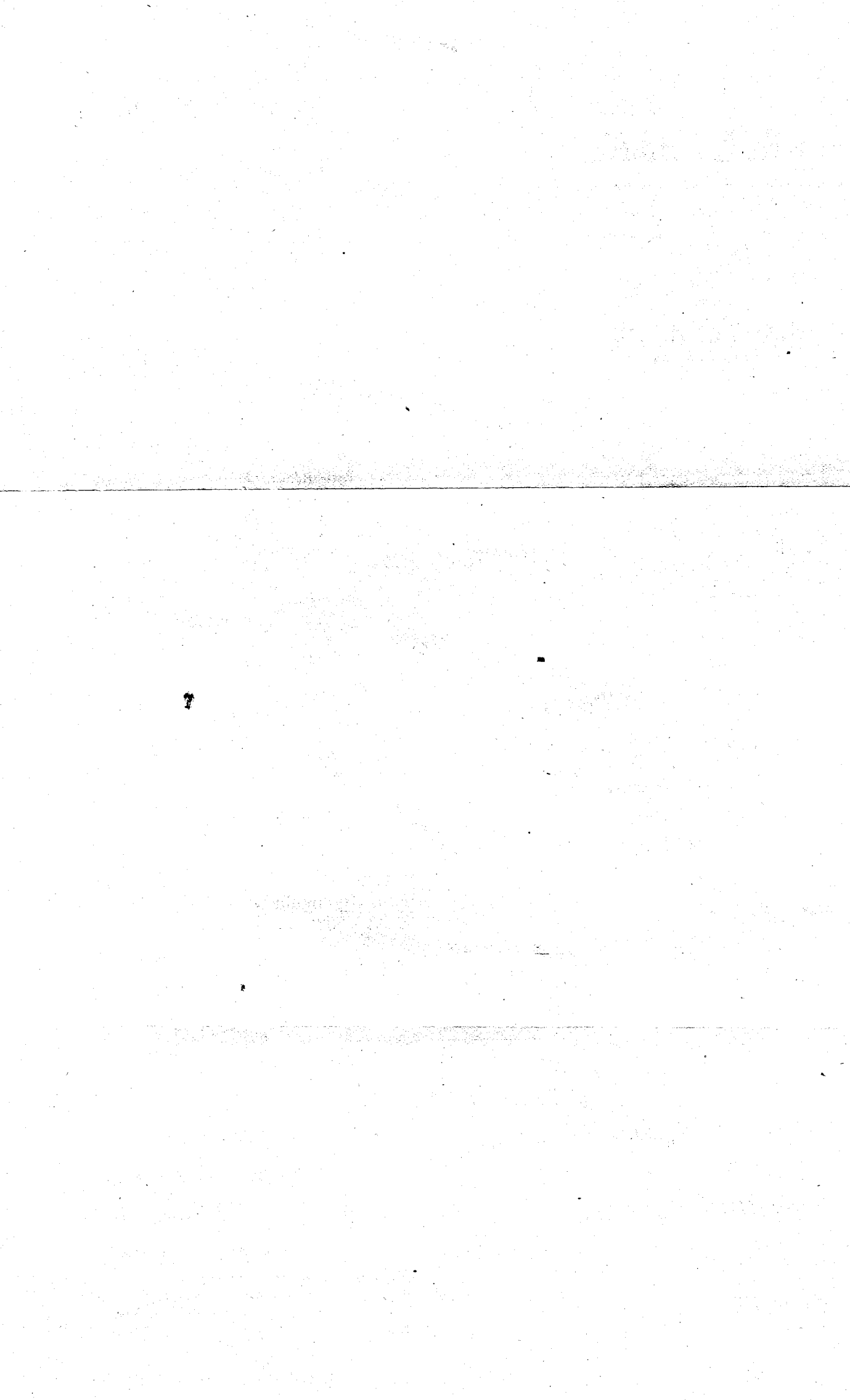
NORTH
ISLAND

SOUTH
ISLAND

COOK
STRAIT

No.	Name	Position	Character	Height	Range	Remarks
1	CAPE MURPHY	37° 30' S 175° 00' E	Fl. W. 10s	100	10	...
2	CAPE PARROT	37° 00' S 175° 00' E	Fl. W. 10s	100	10	...
3	CAPE MARY	36° 30' S 175° 00' E	Fl. W. 10s	100	10	...
4	CAPE GARDNER	36° 00' S 175° 00' E	Fl. W. 10s	100	10	...
5	CAPE WARD	35° 30' S 175° 00' E	Fl. W. 10s	100	10	...
6	CAPE HULL	35° 00' S 175° 00' E	Fl. W. 10s	100	10	...
7	CAPE GARDNER	34° 30' S 175° 00' E	Fl. W. 10s	100	10	...
8	CAPE GARDNER	34° 00' S 175° 00' E	Fl. W. 10s	100	10	...
9	CAPE GARDNER	33° 30' S 175° 00' E	Fl. W. 10s	100	10	...
10	CAPE GARDNER	33° 00' S 175° 00' E	Fl. W. 10s	100	10	...
11	CAPE GARDNER	32° 30' S 175° 00' E	Fl. W. 10s	100	10	...
12	CAPE GARDNER	32° 00' S 175° 00' E	Fl. W. 10s	100	10	...
13	CAPE GARDNER	31° 30' S 175° 00' E	Fl. W. 10s	100	10	...
14	CAPE GARDNER	31° 00' S 175° 00' E	Fl. W. 10s	100	10	...
15	CAPE GARDNER	30° 30' S 175° 00' E	Fl. W. 10s	100	10	...

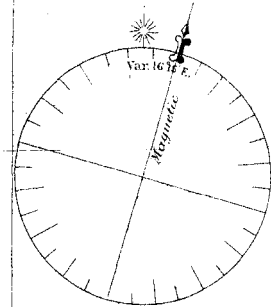
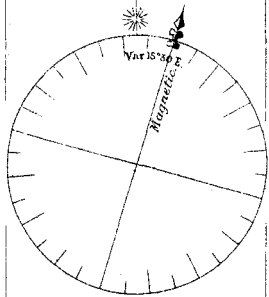
SOUTHERN ISLAND



NEW ZEALAND WRECK CHART

1st July 1879 to 31st March 1880.

COMPILED FROM
OFFICIAL RECORDS
IN THE
MARINE DEPARTMENT.



SYMBOLS

CASUALTIES BY STRANDING

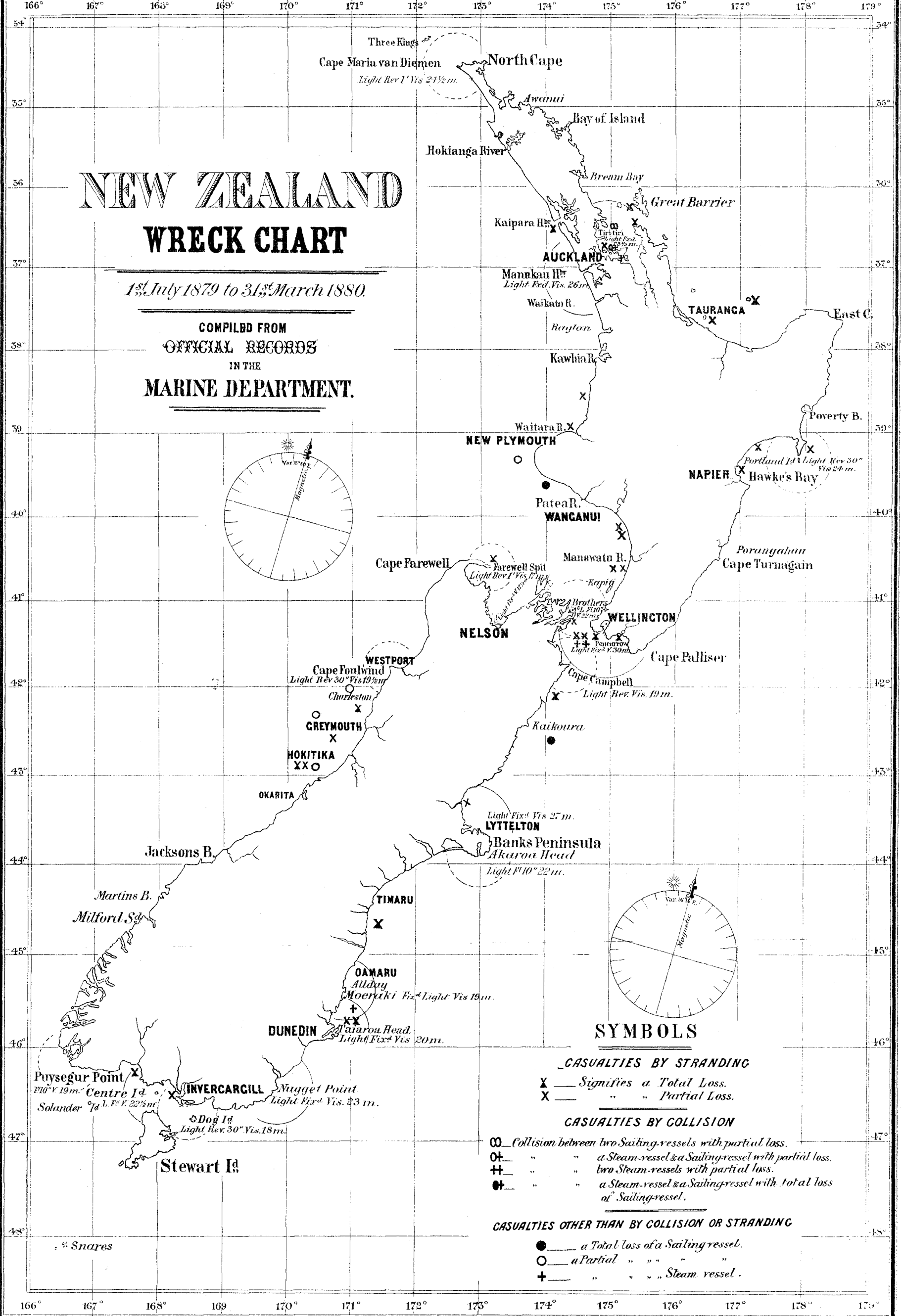
- X — Signifies a Total Loss.
- X — " " Partial Loss.

CASUALTIES BY COLLISION

- OO — Collision between two Sailing-vessels with partial loss.
- O+ — " " a Steam-vessel & a Sailing-vessel with partial loss.
- ++ — " " two Steam-vessels with partial loss.
- ⊕ — " " a Steam-vessel & a Sailing-vessel with total loss of Sailing-vessel.

CASUALTIES OTHER THAN BY COLLISION OR STRANDING

- — a Total Loss of a Sailing vessel.
- — a Partial " " " " "
- + — " " " " Steam vessel.



∞ Snares

