

1869-70.

ESTIMATES

(AS VOTED)

FOR

THE GENERAL GOVERNMENT SERVICES

FOR THE YEAR ENDING

30th June, 1870.



S U M M A R Y .

	1869-70.	
	£ s. d.	£ s. d.
CIVIL LIST	27,500 0 0	
PERMANENT CHARGES	284,383 3 5	
DITTO PROVINCIAL PORTIONS	157,416 0 0	
LIABILITIES AND ENGAGEMENTS	172,734 5 3	
CLASS I.—PUBLIC DOMAINS AND BUILDINGS	2,480 0 0	
CLASS II.—PUBLIC DEPARTMENTS	41,665 18 8	
CLASS III.—LAW AND JUSTICE	55,627 4 0	
CLASS IV.—POSTAL, &C., SERVICES	141,264 0 0	
CLASS V.—CUSTOMS DEPARTMENTS	41,583 1 0	
CLASS VI.—NATIVE	21,407 2 6	
CLASS VII.—MISCELLANEOUS, SPECIAL, AND TEMPORARY	105,219 12 10	
CLASS VIII.—MILITIA VOLUNTEERS, &C.	30,799 14 2	
" " ARMED CONSTABULARY	118,000 0 0	
" " DEFENCE (CONTINGENT)	82,000 0 0	
TOTAL		1,282,080 1 10

CIVIL LIST.

				1869-70.				
				£	s.	d.	£	s.
Governor	4,500	0	0		
Judges	7,700	0	0		
Establishment of General Government	8,300	0	0		
Native Purposes	7,000	0	0		
TOTAL, CIVIL LIST			...				27,500	0 0

PERMANENT CHARGES.

	1869-70.			
	£	s.	d.	£ s. d.
Under Acts of General Assembly.				
<i>Interest and Sinking Fund,—</i>				
<i>New Zealand Loan Act, 1856,—</i>				
Interest on £500,000 @ 4 per cent. ...	20,000	0	0	
Sinking Fund „ „ 2 per cent. ...	10,000	0	0	
	30,000	0	0	
Less proportion contributed by Provinces ...	20,640	0	0	9,360 0 0
<i>New Zealand Loan Act, 1860,—</i>				
Amount of Loan ...	£150,000	0	0	
Amount consolidated ...	54,500	0	0	
	£95,500	0	0	
Interest on £95,500 @ 6 per cent. ...	5,730	0	0	
Sinking Fund „ „ 2 per cent. ...	1,910	0	0	7,640 0 0
<i>New Zealand Loan Act, 1863,—</i>				
Amount of Loan ...	£3,000,000	0	0	
Amount issued @ 6 per cent. ...	£1,500,000	0	0	
Amount consolidated ...	911,400	0	0	
	£588,600	0	0	
Interest on £588,600 @ 6 per cent. ...	35,316	0	0	
Sinking Fund „ „ 2 per cent. ...	11,772	0	0	
Amount issued @ 5 per cent. ...	£1,000,000	0	0	
Amount consolidated ...	431,800	0	0	
	£568,200	0	0	
Interest on £568,200 @ 5 per cent. ...	28,410	0	0	
Sinking Fund „ „ 1 per cent. ...	5,682	0	0	
Amount issued @ 4 per cent. ...	£500,000	0	0	
Interest on £500,000 @ 4 per cent. ...	20,000	0	0	
Sinking Fund „ „ 1 per cent. ...	5,000	0	0	106,180 0 0
<i>Consolidated Loan Act, 1867—</i>				
Amount issued for portion of New Zealand Loan, 1860, consolidated ...	61,900	0	0	
Amount issued for portions of New Zealand Loan, 1863, consolidated ...	1,466,900	0	0	
Amount issued for various services included in “Public Debts Act, 1867,” Schedule B. ...	292,600	0	0	
Amount of additional Debentures issued under “Consolidated Loan Act, 1867” ...	90,000	0	0	
<i>Amount of Debentures issued for Provinces—</i>				
Auckland ...	£502,350	0	0	
Taranaki ...	25,000	0	0	
Wellington ...	97,600	0	0	
Hawke's Bay ...	60,000	0	0	
Nelson ...	31,500	0	0	
Canterbury ...	692,350	0	0	
Otago ...	443,000	0	0	
Southland ...	427,800	0	0	
	2,279,600	0	0	
	4,191,000	0	0	123,180 0 0

PERMANENT CHARGES.

		1869-70.			
		£	s.	d.	£ s. d.
	Brought forward	123,180 0 0
	Interest on £4,191,000 @ 5 per cent.	209,550	0	0	
	Sinking Fund „ „ 1 per cent.	41,910	0	0	
	Of which there is payable, by—	251,460	0	0	
	Auckland ... £30,141 0 0				
	Taranaki ... 1,500 0 0				
	Wellington ... 5,856 0 0				
	Hawke's Bay ... 3,600 0 0				
	Nelson ... } 1,890 0 0				
	Marlborough ... }				
	Canterbury ... } 41,541 0 0				
	Westland ... }				
	Otago ... } 26,580 0 0				
	Southland ... } 25,668 0 0				
		136,776	0	0	114,684 0 0
	<i>Treasury Bills Act, 1868—</i>				
	Interest on £222,000 @ 4d. per cent. per diem ...	13,505	0	0	
	Interest on £6,000 @ 4½d. per cent. per diem, from 1st July to 30th September ...	105	16	0	
	Interest on £6,000 @ 4d. per cent. per diem, from 1st October, 1869, to 30th June, 1870 ...	273	0	0	
	<i>Treasury Bills Act, 1869—</i>				
	Interest on £95,000 @ 4d. per cent. per diem ...	5,779	3	4	
	Interest on £55,000 @ 3½d. per cent. per diem ...	3,032	3	3	22,695 2 7
	TOTAL, INTEREST AND SINKING FUND	...			260,559 2 7
	DITTO PROVINCIAL PORTIONS—				
	Loan of 1856 ...	20,640	0	0	
	Consolidated Loan ...	136,776	0	0	157,416 0 0
	<i>Legislative Officers Salaries Act, 1867—</i>				417,975 2 7
	Legislative Council—				
	Speaker ...	600	0	0	
	Chairman of Committees ...	300	0	0	
	Clerk ...	400	0	0	
	House of Representatives—				
	Speaker ...	600	0	0	
	Chairman of Committees ...	400	0	0	
	Clerk ...	600	0	0	
	Clerk Assistant ...	400	0	0	3,300 0 0
	<i>Audit Act Amendment Act, 1865—</i>				
	Auditor ...	800	0	0	
	Deputy Auditor ...	33	6	8	833 6 8
	<i>Comptroller's Act, 1865—</i>				
	Comptroller			800 0 0
	<i>Attorney-General's Act, 1866—</i>				
	Attorney-General			1,000 0 0
	<i>Waste Lands Act, 1858—</i>				
	Secretary for Crown Lands ...	600	0	0	
	Clerk ...	260	0	0	
	Clerk ...	210	0	0	
	Clerk ...	160	0	0	
	Clerk ...	90	0	0	
	Draughtsman ...	260	0	0	
	Assistant ditto ...	170	0	0	
	Messenger ...	27	7	6	1,777 7 6
	Carried forward	...			425,685 16 9

PERMANENT CHARGES.

	1869-70.	
	£	s. d.
Brought forward	425,685 16 9
<i>New Zealand Institute Act, 1867—</i>		
Director of Geological Survey	800 0 0
<i>Native Schools Act, 1867—</i>		
Contributions to Schools	4,000 0 0	
Out of balance of former Appropriations	1,000 0 0	
Estimated amount required for 1869-70		5,000 0 0
<i>Public Debts Apportionment Act, 1858—</i>		
Taranaki Guarantee	2,200 0 0
<i>Pensions Act, 1856—</i>		
W. Swainson	400 0 0
<i>Martin's Annuity Act, 1858—</i>		
Sir W. Martin	333 6 8
<i>Mayne Pension Act, 1865—</i>		
E. Mayne	200 0 0
<i>Nixon Pension Act, 1865—</i>		
Sisters of the late Colonel Nixon	150 0 0
<i>Armitage Pension Act, 1865—</i>		
Widow of J. Armitage	150 0 0
<i>Bartley Pension Act, 1867—</i>		
T. H. Bartley	300 0 0
<i>Civil Service Superannuation Act, 1858—</i>		
Pensions and Allowances	2,500 0 0
<i>Civil Service Act, 1866—</i>		
Pensions and Allowances	1,000 0 0
<i>Militia Act Amendment Act, 1860—</i>		
Pensions and Allowances	1,500 0 0
<i>Military Pensions Act, 1866—</i>		
Pensions and Allowances	1,300 0 0
<i>Waka Nene's Subsidy Ordinance—</i>		
Tamati Waka Nene	100 0 0
<i>Pensions Acts, 1869—</i>		
Mrs. Hewett (on Estimates this year)	
Mrs. Whiteley	100 0 0	
Mrs. Walsh	30 0 0	
James Wilson	50 0 0	
		180 0 0
TOTAL OF PERMANENT CHARGES	441,799 3 5

LIABILITIES AND ENGAGEMENTS.

Liabilities and Engagements.

Votes		£	s.	d.	£	s.	d.
CLASS I.							
PUBLIC DOMAINS AND BUILDINGS.							
GENERAL CHARGES—							
1	Salaries	106	0	0			
2	Contingencies	10	0	0			
3	Government House and Offices	11,000	0	0			
4	Furniture for new Government House	1,200	0	0			
					12,316	0	0
CLASS II.							
PUBLIC DEPARTMENTS.							
GENERAL CHARGES—							
5	Governor's Establishment, Salaries	134	0	0			
6	Legislative Departments	195	0	0			
7	Executive	630	0	0			
8	Ditto Contingencies	50	0	0			
9	Stamp Office, Salaries	50	0	0			
10	Printing Office	357	0	0			
11	Ditto Extra Assistance, Overtime, &c.	479	0	0			
12	Geological Survey Department, Salaries	117	0	0			
13	Ditto Field Expenses, &c.	100	0	0			
PROVINCIAL CHARGES—							
14	Paymaster's Departments, Salaries	110	0	0			
15	Ditto Clerical Assistance and Contingencies	160	0	0			
16	Stamp Departments, Salaries	111	0	0			
17	Ditto Contingencies	168	0	0			
18	Electoral Departments, Salaries	141	0	0			
19	Ditto Printing Electoral Rolls, &c.	500	0	0			
					3,302	0	0
CLASS III.							
LAW AND JUSTICE.							
GENERAL CHARGES—							
20	Colonial Secretary's Office (Judicial Branch), Salaries	155	0	0			
21	Ditto Travelling Expenses of Judges &c.	100	0	0			
22	Registrar of Land, &c., Salaries	35	0	0			
PROVINCIAL CHARGES—							
23	{	Supreme Courts,	}	Salaries	3,543	0	0
24		District Courts		Contingencies	100	0	0
25		Criminal Prosecutions			200	0	0
26		Coroners			100	0	0
27		Contingencies			200	0	0
					4,433	0	0
CLASS IV.							
POSTAL.							
GENERAL CHARGES—							
28	General Post Office, Salaries	236	0	0			
29	Arrears, Suez Line	7,736	14	10			
30	{	Intercolonial Steam Subsidies	}		1,525	0	0
31		Interprovincial			100	0	0

LIABILITIES AND ENGAGEMENTS.

		£	s.	d.	£	s.	d.
CLASS IV.—continued.							
POSTAL—continued.							
PROVINCIAL CHARGES—							
32	Auckland, Salaries and Mail Contracts ...	1,181	0	0			
33	Taranaki " " ...	62	0	0			
34	Hawke's Bay " " ...	259	0	0			
35	Wellington " " ...	657	0	0			
36	Nelson " " ...	521	0	0			
37	Marlborough " " ...	250	0	0			
38	Canterbury " " ...	2,321	0	0			
39	Westland " " ...	609	0	0			
40	Otago " " ...	2,900	0	0			
41	Southland " " ...	380	0	0			
42	Contingencies ...	500	0	0			
GENERAL CHARGES—							
43	Telegraph Department, Salaries ...	167	0	0			
44	" Wanganui Line (130 miles), payments already made ...	5,000	0	0			
45	" Cambridge Line (12 miles), now in course of construction ...	200	0	0			
PROVINCIAL CHARGES—							
46	Telegraph Department, Salaries ...	1,117	0	0			
47	Ditto Maintenance of Lines, &c. ...	400	0	0			
GENERAL CHARGES—							
48	Marine Department, Salaries ...	366	0	0			
49	Ditto Contingencies ...	200	0	0			
Lighthouses (Works in progress)—							
50	Nugget Point Lighthouse ...	3,080	0	0			
51	Cape Campbell ...	3,210	0	0			
52	Farewell Spit ...	4,085	0	0			
53	Manukau Light ...	120	0	0			
54	Flat Rock Beacon ...	480	0	0			
					37,662	14	10
CLASS V.							
CUSTOMS.							
GENERAL CHARGES—							
55	{ Inspector's Department, } { Chatham Islands } Salaries and Contingencies	132	1	8			
PROVINCIAL CHARGES—							
56	Auckland, Salaries, &c. ...	550	0	0			
57	Taranaki " " ...	35	0	0			
58	Hawke's Bay " " ...	95	0	0			
59	Wellington " " ...	350	0	0			
60	Nelson " " ...	250	0	0			
61	Marlborough " " ...	65	0	0			
62	Canterbury " " ...	375	0	0			
63	Westland " " ...	400	0	0			
64	Otago " " ...	450	0	0			
65	Southland " " ...	200	0	0			
66	Ditto, Contingencies ...	161	12	5			
					3,063	14	1
CLASS VI.							
NATIVE.							
GENERAL CHARGES—							
67	Contingencies ...	50	0	0			
68	Salaries of Officers ...	2,262	0	0			
					2,312	0	0
CLASS VII.							
MISCELLANEOUS.							
GENERAL CHARGES—							
69	Sundry Charges ...	1,000	0	0			
70	Compensation to Miss Briggs and others ...	1,369	16	4			
71	Payment of Treasury Bills ...	6,000	0	0			
72	Judge Johnston's "New Zealand Justice of the Peace" ...	450	0	0			
PROVINCIAL CHARGES—							
73	Native Lands Court ...	450	0	0			
					9,269	16	4

LIABILITIES AND ENGAGEMENTS.

		£	s.	d.	£	s.	d.
CLASS VIII.							
DEFENCE.							
GENERAL CHARGES—							
74	Militia and Volunteers, Salaries	224	0	0	
75	Armed Constabulary, Pay	29,026	0	0	
76	Ditto Ammunition	7,331	0	0	
77	Ditto "Sturt" and "St. Kilda"	500	0	0	
78	Ditto Transport, Rations, &c.	16,400	0	0	
79	Ditto Arrears of Pay, Rations, &c.	14,441	0	0	
PROVINCIAL CHARGES—							
80	Militia and Volunteers, Salaries	578	0	0	
81	Ditto Capitation Grant	500	0	0	
					69,000	0	0
TOTAL, CONSOLIDATED FUND		...			£141,359	5	3
SPECIAL FUND.							
CONFISCATED LANDS—							
82	Unexpended Balance	6,500	0	0
WELLINGTON DEBENTURES—							
83	Amount to be paid off	17,550	0	0
NELSON DEBENTURES—							
84	Amount to be paid off	1,000	0	0
COLONIAL 8 PER CENT. DEBENTURES—							
85	Amount to be paid off	325	0	0
SOUTHLAND DEBTS—							
86	Amounts yet to be paid	6,000	0	0
TOTAL, SPECIAL FUND		...			31,375	0	0
SUMMARY.							
LIABILITIES.							
GENERAL CHARGES							
	Class I.	12,316	0	0	
	Class II.	2,112	0	0	
	Class III.	290	0	0	
	Class IV.	26,505	14	10	
	Class V.	132	1	8	
	Class VI.	2,312	0	0	
	Class VII.	8,819	16	4	
	Class VIII.	67,922	0	0	
					120,409	12	10
PROVINCIAL CHARGES—							
	Class II.	1,190	0	0	
	Class III.	4,143	0	0	
	Class IV.	11,157	0	0	
	Class V.	2,931	12	5	
	Class VII.	450	0	0	
	Class VIII.	1,078	0	0	
					20,949	12	5
SPECIAL FUND		...			141,359	5	3
					31,375	0	0
TOTAL LIABILITIES AND ENGAGEMENTS		...			£172,734	5	3

Class I.

PUBLIC DOMAINS AND BUILDINGS.

				1869-70.			
				£	s.	d.	£
General Charges.							
Government Domains	1,030	0	0	
Government Houses	400	0	0	
General Assembly Buildings and Grounds	300	0	0	
Museum	550	0	0	
Clerk of Public Works	200	0	0	
TOTAL OF CLASS I.							2,480 0 0

AN ESTIMATE of the Sum that will be required in the Year ending 30 June 1870 to defray the Charges of PUBLIC DOMAINS and BUILDINGS.

Item.	General Charges.	1869-70.			
		£	s.	d.	£ s. d.
	GOVERNMENT DOMAINS—				
1	Overseer of Government Domains	200	0	0	
2	Gardeners and Labourers, Wellington and Auckland	680	0	0	
3	Contingencies	150	0	0	
	TOTAL—GOVERNMENT DOMAINS				1,030 0 0
	GOVERNMENT HOUSES, WELLINGTON AND AUCKLAND—				
4	Repairs and Additions	200	0	0	
5	Contingencies	200	0	0	
	TOTAL—GOVERNMENT HOUSES				400 0 0
	GENERAL ASSEMBLY BUILDINGS AND GROUNDS—				
6	Repairs and Additions	300	0	0	
	TOTAL—GENERAL ASSEMBLY BUILDINGS AND GROUNDS				300 0 0
	MUSEUM—				
7	Repairs, &c.	50	0	0	
8	Estimate under clause 14, New Zealand Institute Act	500	0	0	
	TOTAL—MUSEUM				550 0 0
9	COLONIAL ARCHITECT	200	0	0	
	TOTAL—COLONIAL ARCHITECT				200 0 0
	TOTAL—VOTE 87—PUBLIC DOMAINS AND BUILDINGS				2,480 0 0
	TOTAL OF CLASS 1.				2,480 0 0

Class II.

PUBLIC DEPARTMENTS.

General Charges.	1869-70.											
				£	s.	d.				£	s.	d.
Governor's Establishment	1,600	0	0						
Legislative	12,309	4	0						
Executive	7,871	13	0						
Stamp Office	624	15	0						
Printing	5,627	0	0						
Geological Survey	2,450	0	0						
TOTAL, GENERAL CHARGES							30,482	12	0
Provincial Charges.												
Receiver of Revenue, Westland	400	0	0						
Registrars of Marriages and Births	2,750	0	0						
Treasury	2,455	0	0						
Stamp Office	2,095	0	0						
Electoral	3,483	6	8						
TOTAL, PROVINCIAL CHARGES							11,183	6	8
TOTAL OF CLASS II.							41,665	18	8

AN ESTIMATE of the Sum that will be required in the Year ending 30 June 1870 to
defray the Salaries and Expenses of PUBLIC DEPARTMENTS.

Item.				1869-70.					
				£ s. d.			£ s. d.		
General Charges.									
1	GOVERNOR'S ESTABLISHMENT	1,600	0	0			
TOTAL—VOTE 88—GOVERNOR'S ESTABLISHMENT							1,600	0	0
LEGISLATIVE COUNCIL—									
1	Clerk Assistant	200	0	0			
2	Clerical Assistance	100	0	0			
3	Messengers during Session	100	0	0			
HOUSE OF REPRESENTATIVES—									
4	Second Clerk Assistant	300	0	0			
5	Extra Clerks during Session	300	0	0			
6	Serjeant-at-Arms	250	0	0			
7	Interpreter	50	0	0			
8	Messenger	109	4	0			
9	Extra Messengers during Session	300	0	0			
GENERAL EXPENSES—									
10	Passages of Members	900	0	0			
11	Expenses of Members of both Houses	6,500	0	0			
12	Clerk in Private Bill Office	50	0	0			
13	*Library Attendant	150	0	0			
14	Reporters	1,200	0	0			
15	Printing of <i>Hansard</i>	1,000	0	0			
16	Library	300	0	0			
17	Contingencies	500	0	0			
TOTAL—VOTE 89—LEGISLATIVE DEPARTMENTS							12,309	4	0
COLONIAL SECRETARY'S OFFICE—									
1	Chief Clerk	370	0	0			
2	Clerk	260	0	0			
3	Clerk	200	0	0			
4	Clerk	180	0	0			
5	Messenger	109	4	0			
TREASURY—									
6	Paymaster-General and Accountant	450	0	0			
7	Chief Clerk and Cashier	325	0	0			
8	First Clerk, Accountant's Office	300	0	0			
9	Clerk	125	0	0			
10	Clerk	200	0	0			
11	Clerks, 2 at £75	150	0	0			
12	Extra clerical assistance	400	0	0			
13	Messenger	109	4	0			
14	Contingencies	100	0	0			
AUDIT OFFICE—									
15	Chief Clerk	350	0	0			
16	Clerk	260	0	0			
17	Clerk	310	0	0			
18	Clerk	270	0	0			
19	Clerk	210	0	0			
20	Clerk	200	0	0			
21	Clerk	140	0	0			
22	Clerk	31	5	0			
23	Clerk	160	0	0			
24	Messenger	52	0	0			
Carried forward				5,261	13	0	13,909	4	0

* And five shillings per diem extra during the Session.

CLASS II.—PUBLIC DEPARTMENTS—*continued.*

Item.	1869-70.								
	£ s. d.			£ s. d.					
General Charges—<i>continued.</i>									
	Brought forward	5,261	13	0	13,909	4	0
REGISTRY OF MARRIAGES AND BIRTHS, DEATHS, ETC.—									
25	Registrar-General	600	0	0			
26	Deputy Registrar and Chief Clerk	260	0	0			
27	Clerk	180	0	0			
28	Clerk	100	0	0			
29	Statistics	50	0	0			
30	CONTINGENCIES for the above Departments	400	0	0			
31	CHIEF MESSENGER AND HOUSEKEEPER	180	0	0			
32	GOVERNMENT STOREKEEPER	200	0	0			
33	LITHOGRAPHER	235	0	0			
34	Assistant	50	0	0			
35	PRINTER OF POSTAGE STAMPS	275	0	0			
36	Assistant	80	0	0			
	TOTAL—VOTE 90—EXECUTIVE				7,871	13	0
STAMP DEPARTMENT—									
1	Secretary and Deputy Commissioner	150	0	0			
2	Accountant	250	0	0			
3	Stamper	70	0	0			
4	Cadet	50	0	0			
5	Messenger	54	15	0			
6	Boy in Stamping Room	50	0	0			
	TOTAL—VOTE 91—STAMP OFFICE				624	15	0
PRINTING DEPARTMENT—									
1	Government Printer	350	0	0			
2	Overseer	220	0	0			
3	Sub-overseer	190	0	0			
4	Reader	180	0	0			
5	Compositors (fourteen at £156)	2,184	0	0			
6	Pressmen (one at £165, one at £156, one at £135)	456	0	0			
7	Machinist	156	0	0			
8	Engine Driver	156	0	0			
9	Boys	385	0	0			
10	Extra assistance during Session of Assembly	800	0	0			
11	Contingencies, Overtime, &c.	550	0	0			
	TOTAL—VOTE 92—PRINTING OFFICE				5,627	0	0
GEOLOGICAL SURVEY DEPARTMENT—									
1	Assistant Geologist	350	0	0			
2	Clerk and Curator	300	0	0			
3	Draftsman, &c.	300	0	0			
4	Laboratory Assistant	300	0	0			
5	Messenger and Museum Assistant	150	0	0			
6	Field Expenses, &c.	800	0	0			
7	Laboratory	50	0	0			
8	Contingencies	200	0	0			
	TOTAL—VOTE 93—GEOLOGICAL SURVEY				2,450	0	0
	TOTAL GENERAL CHARGES				30,482	12	0

CLASS II.—PUBLIC DEPARTMENTS—*continued.*

Item.	1869-70.				
	£	s.	d.	£ s. d.	
Provincial Charges.					
	RECEIVER OF REVENUE, WESTLAND	400	0	0	
	TOTAL—VOTE 94—RECEIVER, WESTLAND				400 0 0
1	REGISTRARS OF MARRIAGES FOR THE SEVERAL REGISTRARS' DISTRICTS	2,500	0	0	
2	REGISTRARS OF JOINT STOCK COMPANIES All Registrars (except at Auckland) are authorized to retain fees received up to £50 per annum.	250	0	0	
	TOTAL—VOTE 95—REGISTRARS				2,750 0 0
TREASURY—					
<i>Auckland—</i>					
1	Paymaster				
2	Clerk	250	0	0	
3	Clerk	200	0	0	
<i>Wellington—</i>					
4	Clerk	225	0	0	
<i>Nelson—</i>					
5	Paymaster	100	0	0	
<i>Canterbury—</i>					
6	Paymaster	250	0	0	
7	Clerk	250	0	0	
8	Rent of Offices	80	0	0	
<i>Southland—</i>					
9	Paymaster	50	0	0	
10	CLERICAL ASSISTANCE for Treasury Departments, provincially charged	800	0	0	
11	CONTINGENCIES for the above Departments	250	0	0	
	TOTAL—VOTE 96—PAYMASTER'S DEPARTMENT				2,455 0 0
STAMP DEPARTMENT—					
<i>Auckland—</i>					
1	Deputy Commissioner	50	0	0	
2	Clerk	200	0	0	
3	Junior Clerk	75	0	0	
4	Officer in Charge of Branch Office, Graham's Town	250	0	0	
<i>Taranaki—</i>					
5	Deputy Commissioner	25	0	0	
6	Clerk	20	0	0	
<i>Hawke's Bay—</i>					
7	Deputy Commissioner	25	0	0	
8	Clerk	100	0	0	
<i>Wellington—</i>					
9	Clerk	175	0	0	
<i>Nelson—</i>					
10	Deputy Commissioner	25	0	0	
<i>Marlborough—</i>					
11	Deputy Commissioner	25	0	0	
	Carried forward	970	0	0	5,605 0 0

CLASS II.—PUBLIC DEPARTMENTS—*continued.*

Item.	1869-70.			
	£	s.	d.	£ s. d.
Provincial Charges—<i>continued.</i>				
	970	0	0	5,605 0 0
	Brought forward			
STAMP DEPARTMENT—<i>continued.</i>				
<i>Canterbury—</i>				
12				50 0 0
	Deputy Commissioner			
13				200 0 0
	Clerk			
<i>Westland—</i>				
14				50 0 0
	Deputy Commissioner			
15				100 0 0
	Clerk			
<i>Otago—</i>				
16				50 0 0
	Deputy Commissioner			
17				200 0 0
	Clerk			
<i>Southland—</i>				
18				25 0 0
	Deputy Commissioner			
19				50 0 0
	Clerk			
20				400 0 0
	CONTINGENCIES for the above Department ...			
	TOTAL—VOTE 97—STAMP DEPARTMENT ...			2,095 0 0
ELECTORAL—				
<i>Auckland—</i>				
1				25 0 0
	Returning and Registration Officer for Mongonui ...			
2				25 0 0
	Returning and Registration Officer for Bay of Islands ...			
3				25 0 0
	Returning and Registration Officer for Marsden ...			
4				75 0 0
	Returning and Registration Officer for Northern Division, City of Auckland East, City of Auckland West, Parnell, and Newton			
5				75 0 0
	Returning and Registration Officer for Pensioner Settlements, Town of Onehunga, Franklin, and Raglan ...			
<i>Taranaki—</i>				
6				25 0 0
	Returning and Registration Officer for Grey and Bell, Town of New Plymouth, and Omata ...			
<i>Hawke's Bay—</i>				
7				50 0 0
	Returning and Registration Officer for Napier and Clive...			
<i>Wellington—</i>				
8				25 0 0
	Returning and Registration Officer for Wanganui and Rangitikei			
9				25 0 0
	Returning and Registration Officer for Porirua, City of Wellington, and Hutt			
10				25 0 0
	Returning and Registration Officer for Wairarapa ...			
<i>Nelson—</i>				
11				25 0 0
	Returning and Registration Officer for Collingwood ...			
12				50 0 0
	Returning and Registration Officer for Motueka ...			
13				75 0 0
	Returning and Registration Officer for City of Nelson, Suburbs of Nelson and Waimea			
<i>Marlborough—</i>				
14				25 0 0
	Returning and Registration Officer for Picton and Wairau			
<i>Canterbury—</i>				
15				25 0 0
	Returning and Registration Officer for Cheviot ...			
16				...
	Returning and Registration Officer for Ashley ...			
17				70 0 0
	Returning and Registration Officer for Kaiapoi, Avon, City of Christchurch, and Heathcote			
18				30 0 0
	Returning and Registration Officer for Mount Herbert and Town of Lyttelton			
	675	0	0	7,700 0 0
	Carried forward			

CLASS II.—PUBLIC DEPARTMENTS—*continued.*

Item.		1869-70.		
		£	s.	d.
	Provincial Charges—<i>continued.</i>			
	Brought forward	675	0	0
	ELECTORAL—<i>continued.</i>			
	<i>Canterbury—continued.</i>			
19	Returning and Registration Officer for Akaroa ...	25	0	0
20	Returning and Registration Officer for Selwyn and Coleridge ...	25	0	0
21	Returning and Registration Officer for Timaru and Gladstone ...	25	0	0
	<i>Westland—</i>			
22	Returning and Registration Officers for Westland ...	50	0	0
	<i>Otago—</i>			
23	Returning and Registration Officer for City of Dunedin, Roslyn, and Caversham ...	100	0	0
24	Returning and Registration Officer for Port Chalmers ...	25	0	0
25	Returning and Registration Officer for Taieri ...	25	0	0
26	Returning and Registration Officer for Bruce ...	25	0	0
27	Returning and Registration Officer for Clutha ...	25	0	0
28	Returning and Registration Officer for Hampden ...	25	0	0
29	Returning and Registration Officer for Manuherikia ...	16	13	4
30	Returning and Registration Officer for Oamaru ...	25	0	0
31	Returning and Registration Officer for Waikouaiti ...	25	0	0
32	Returning and Registration Officer for Gold Fields Towns ...	16	13	4
33	Returning and Registration Officer for Gold Fields in the Province of Otago ...	25	0	0
	<i>Southland—</i>			
34	Returning and Registration Officer for Invercargill and Mataura ...	25	0	0
35	Returning and Registration Officer for Riverton ...	25	0	0
36	Returning and Registration Officer for Wallace ...	25	0	0
	<i>Province of Auckland—</i>			
37	Revising Officer for Electoral Districts ...	100	0	0
	<i>Province of Taranaki—</i>			
38	Revising Officer for Electoral Districts ...	25	0	0
	<i>Province of Wellington—</i>			
39	Revising Officer for Electoral Districts ...	75	0	0
	<i>Province of Hawke's Bay—</i>			
40	Revising Officer for Electoral Districts ...	25	0	0
	<i>Province of Nelson—</i>			
41	Revising Officer for Electoral Districts ...	75	0	0
	<i>Province of Marlborough—</i>			
42	Revising Officer for Electoral Districts ...	25	0	0
	<i>Province of Canterbury and County of Westland—</i>			
43	Revising Officer for Electoral Districts ...	100	0	0
	<i>Provinces of Otago and Southland—</i>			
44	Revising Officer for Electoral Districts ...	150	0	0
45	Travelling Expenses and Contingencies for Returning, Registration, and Revising Officers ...	300	0	0
46	Expenses of Printing Rolls and Advertising Electoral Claims, Elections and Contingencies ...	1,400	0	0
	TOTAL—VOTE 98—ELECTORAL DEPARTMENT ...			3,483 6 8
	TOTAL, PROVINCIAL CHARGES ...			11,183 6 8
	GENERAL CHARGES ...	30,482	12	0
	PROVINCIAL CHARGES ...	11,183	6	8
	TOTAL OF CLASS II. ...	41,665	18	8

Class III.

LAW AND JUSTICE.

				1869-70.			
				£	s. d.	£	s. d.
General Charges	6,335	10 0		
TOTAL, GENERAL CHARGES						6,335	10 0
Provincial Charges—							
Supreme Courts	6,301	0 0		
District Courts	2,890	0 0		
Resident Magistrates' Courts	21,618	4 0		
Petty Sessions	400	0 0		
Criminal Prosecutions	6,000	0 0		
Coroners	2,200	0 0		
Land and Deeds Registry	9,882	10 0		
TOTAL, PROVINCIAL CHARGES						49,291	14 0
TOTAL OF CLASS III.						55,627	4 0

CLASS III.—LAW AND JUSTICE.

AN ESTIMATE of the Sum that will be required in the Year ending 30 June 1870 to defray the Salaries, Allowances, and Expenses of COURTS OF LAW.

Item.	General Charges.	1869-70.	
		£ s. d.	£ s. d.
COLONIAL SECRETARY'S OFFICE—(Judicial Branch)—			
1	Chief Clerk	400	0 0
2	Clerk	220	0 0
3	*Messenger	121	0 0
4	Contingencies	50	0 0
5	Addition to half salary drawn by Acting Judge	337	10 0
6	Travelling Expenses of Judges and Clerks on Circuit	950	0 0
7	Clerk to Judge, Auckland	150	0 0
8	Clerk to Judge, Wellington	150	0 0
9	Clerk to Judge, Canterbury	150	0 0
10	Clerk to Judge, Otago	150	0 0
11	Clerk to Judge, Westland and Nelson	150	0 0
12	Resident Magistrate, Chatham Islands (£150 for Native Office, £200 for Customs)	50	0 0
13	Repairs to Gaol, Chatham Islands	17	0 0
14	Contingencies	50	0 0
15	Prosecution of persons charged with Treason	3,000	0 0
REGISTRY OF LAND AND DEEDS—			
16	Registrar-General of Land (also Land Claims Commissioner and Secretary for Crown Lands)	300	0 0
17	Secretary (also Registrar of Deeds at Wellington)
18	Clerk	90	0 0
TOTAL—VOTE 99—GENERAL CHARGES			6,335 10 0
Provincial Charges.			
SUPREME COURT—			
<i>Auckland—</i>			
1	Registrar	450	0 0
2	Sheriff	500	0 0
3	Deputy Registrar and Chief Clerk	250	0 0
4	Clerk	50	0 0
5	Crier and Messenger	120	0 0
6	Interpreter, One Guinea per day when employed
7	Office Cleaner	15	0 0
TOTAL—VOTE 100—AUCKLAND			1,385 0 0
<i>Taranaki—</i>			
1	Registrar	100	0 0
2	Sheriff	Fees.	...
TOTAL—VOTE 101—TARANAKI			100 0 0
<i>Hawke's Bay—</i>			
1	Deputy Registrar	75	0 0
2	Sheriff	50	0 0
3	Bailiff and Crier	20	0 0
TOTAL—VOTE 102—HAWKE'S BAY			145 0 0
<i>Wellington—</i>			
1	Registrar	400	0 0
2	Sheriff	50	0 0
3	Deputy Registrar	25	0 0
4	Clerk	25	0 0
5	*Crier and Messenger	132	0 0
Carried forward			632 0 0
TOTAL			1,630 0 0

* These two Messengers entitled under Civil Service Act to annual increase of £5 10s. and £6 respectively.

CLASS III.—LAW AND JUSTICE—*continued.*

Item.					1869-70.					
					£ s. d.			£ s. d.		
Provincial Charges—<i>continued.</i>										
Brought forward				632 0 0			1,630 0 0			
SUPREME COURT—<i>continued.</i>										
<i>Wellington—continued.</i>										
6	Interpreter	20	0	0			
7	Office Cleaner	36	0	0			
<i>Wairarapa—</i>										
8	Sheriff	Fees.					
<i>Wanganui—</i>										
9	Sheriff	Fees.					
TOTAL—VOTE 103—WELLINGTON							688 0 0			
<i>Nelson—</i>										
1	Registrar	200	0	0			
2	Sheriff	50	0	0			
3	Travelling allowance to Sheriff	12	0	0			
4	Bailiff and Crier	20	0	0			
<i>Westport—</i>										
5	Sheriff	£25 and Fees.					
TOTAL—VOTE 104—NELSON							307 0 0			
<i>Marlborough—</i>										
1	Deputy Registrar	50	0	0			
2	Sheriff	Fees.					
TOTAL—VOTE 105—MARLBOROUGH							50 0 0			
<i>Canterbury—</i>										
1	Registrar	450	0	0			
2	Sheriff	500	0	0			
3	Chief Clerk	250	0	0			
4	Clerk	100	0	0			
5	Crier and Messenger	110	0	0			
TOTAL—VOTE 106—CANTERBURY							1,410 0 0			
<i>Westland—</i>										
1	Registrar	250	0	0			
2	Sheriff	Fees.					
3	Deputy Registrar and Clerk	180	0	0			
4	Crier and Messenger, 10s. a day when employed					
TOTAL—VOTE 107—WESTLAND							430 0 0			
<i>Otago—</i>										
1	Registrar	400	0	0			
2	Sheriff	400	0	0			
3	Clerk	250	0	0			
4	Clerk	15	0	0			
5	Crier and Messenger	150	0	0			
6	Office Cleaner	36	0	0			
TOTAL—VOTE 108—OTAGO							1,251 0 0			
<i>Southland—</i>										
1	Registrar	100	0	0			
2	Sheriff (£100 from Native Office)	25	0	0			
3	Usher	10	0	0			
TOTAL—VOTE 109—SOUTHLAND							135 0 0			
CONTINGENCIES for the above Departments							400 0 0			
TOTAL—VOTE 110—CONTINGENCIES							400 0 0			
TOTAL, SUPREME COURT							6,301 0 0			
Carried forward							6,301 0 0			

CLASS III.—LAW AND JUSTICE—*continued.*

Item.							1869-70.					
							£ s. d.			£ s. d.		
Provincial Charges—<i>continued.</i>												
	Brought forward			6,301 0 0		
DISTRICT COURTS—												
<i>Auckland—</i>												
1	Judge	200	0	0			
2	Clerk	50	0	0			
	TOTAL—VOTE 111—AUCKLAND									250 0 0		
<i>Nelson—</i>												
1	*Judge (Westland North)	300	0	0			
2	Clerk at Westport	40	0	0			
3	Bailiffs at Westport and Charleston	Fees.					
	TOTAL—VOTE 112—NELSON									340 0 0		
<i>Westland (County of)—</i>												
1	*Judge	600	0	0			
2	Clerk at Hokitika	300	0	0			
3	Clerk at Greymouth	40	0	0			
4	Bailiffs at Hokitika and Greymouth	Fees.					
5	Crier, 10s. a day when employed					
	TOTAL—VOTE 113—WESTLAND									940 0 0		
<i>Otago (Gold Fields)—</i>												
1	Judge	800	0	0			
2	Travelling Allowance	300	0	0			
3	Four Bailiffs	Fees.					
	TOTAL—VOTE 114—OTAGO (GOLD FIELDS)									1,100 0 0		
1	CONTINGENCIES for the above Departments						60 0 0					
	TOTAL—VOTE 115—CONTINGENCIES									60 0 0		
1	TRAVELLING EXPENSES OF JUDGE of the Westland and Westland North Courts						200 0 0					
	TOTAL—VOTE 116—TRAVELLING EXPENSES									200 0 0		
	TOTAL, DISTRICT COURTS						2,890 0 0					
RESIDENT MAGISTRATES' COURTS—												
<i>Auckland—</i>												
1	Resident Magistrate	550	0	0			
2	Chief Clerk	270	0	0			
3	Clerk	240	0	0			
4	Interpreter					
5	Bailiff	150	0	0			
6	Assistant Bailiff	120	0	0			
7	Messenger	30	0	0			
<i>Onehunga, Otahuhu, Howick, and Panmure—</i>												
8	Resident Magistrate	250	0	0			
9	Clerk	120	0	0			
10	Travelling allowance	15	0	0			
11	Forage	50	0	0			
<i>Papakura, Drury, Pokeno, Waiuku, and Port Waikato—</i>												
12	Resident Magistrate	275	0	0			
13	Forage Allowance	50	0	0			
14	Clerk at Papakura, Drury, and Pokeno	100	0	0			
15	Clerk and Interpreter at Waiuku and Port Waikato (£50 from Native Office)...	100	0	0			
	Carried forward						2,320 0 0			9,191 0 0		

* Same person.

CLASS III.—LAW AND JUSTICE—*continued.*

Item.	1869-70.	
	£ s. d.	£ s. d.
Provincial Charges—<i>continued.</i>		
	2,320 0 0	9,191 0 0
Brought forward		
RESIDENT MAGISTRATES' COURTS—<i>continued.</i>		
<i>Wangarei—</i>		
16	Resident Magistrate (also Collector of Customs) ...	100 0 0
<i>Russell—</i>		
17	Resident Magistrate	300 0 0
18	Clerk	150 0 0
<i>Kaipara—</i>		
19	Clerk (£100 from Native Office)	50 0 0
<i>Mongonui—</i>		
20	Resident Magistrate (£300 from Native Office, £125 as Judge of Land Court)	75 0 0
21	Clerk	150 0 0
22	Interpreter	100 0 0
<i>Waimate, Hokianga, and Whangaroa—</i>		
23	Resident Magistrate (£300 from Native Office) ...	50 0 0
24	Clerk (£125 from Native Office)	75 0 0
<i>Waikato Districts and Raglan—</i>		
25	Resident Magistrate	400 0 0
26	Travelling Allowance	25 0 0
27	Clerk and Interpreter at Waikato (£50 from Native Office)	50 0 0
28	Clerk and Interpreter at Raglan (£100 from Native Office)	50 0 0
<i>Tauranga—</i>		
29	Resident Magistrate (£250 Civil Commissioner Native Office)	250 0 0
30	Clerk (£125 from Native Office)	75 0 0
	TOTAL—VOTE 117—AUCKLAND	4,220 0 0
<i>New Plymouth—</i>		
1	Clerk	150 0 0
2	Bailiff, Assistant Clerk, and Crier to Supreme Court ...	160 0 0
	TOTAL—VOTE 118—TARANAKI	310 0 0
<i>Napier—</i>		
1	Resident Magistrate (also, Registration and Returning Officer, and Receiver of Land Revenue)	250 0 0
2	Clerk and Interpreter	225 0 0
3	Assistant Clerk and Bailiff	130 0 0
<i>Wairoa—</i>		
4	Resident Magistrate (£200 from Native Office) ...	200 0 0
5	Clerk (£75 from Native Office)	75 0 0
<i>Poverty Bay—</i>		
6	Resident Magistrate (£200 from Native Office) ...	200 0 0
	TOTAL—VOTE 119—HAWKE'S BAY	1,080 0 0
<i>Wellington and Hutt—</i>		
1	Resident Magistrate (Sheriff £50, Registration and Returning Officer, £25)	500 0 0
2	Clerk and Interpreter	280 0 0
3	Travelling Expenses	20 0 0
4	Clerk	75 0 0
5	Clerk	50 0 0
6	Bailiff	150 0 0
7	Rent of Court at Hutt	20 0 0
8	Office Cleaner	14 0 0
<i>Rangitikei and Manawatu—</i>		
9	Clerk and Interpreter	150 0 0
	Carried forward	1,259 0 0
		14,801 0 0

CLASS III.—LAW AND JUSTICE—*continued.*

Item.		1869-70.			
		£	s.	d.	£ s. d.
	Provincial Charges—<i>continued.</i>				
	Brought forward	1,259	0	0	14,801 0 0
	RESIDENT MAGISTRATES' COURTS—<i>continued.</i>				
	<i>Wanganui, Rangitikei, and Manawatu—</i>				
10	Resident Magistrate (also Returning and Registration Officer, £25)	350	0	0	
11	Forage	54	12	0	
12	Ditto	25	0	0	
13	Clerk and Interpreter	250	0	0	
14	Assistant Clerk and Interpreter	75	0	0	
15	Clerical Assistance	25	0	0	
16	Bailiff	90	0	0	
17	Travelling Expenses of Interpreter	20	0	0	
	<i>Wairarapa—</i>				
18	Resident Magistrate	400	0	0	
19	Clerk	150	0	0	
20	Refund of fine to W. Tuck for breach of Licensing Act ...	2	10	0	
21	Refund to Constable Donnelly of money found on prisoners, being proceeds of sale of stolen horses	6	10	0	
	TOTAL—VOTE 120—WELLINGTON				2,707 12 0
	<i>Nelson—</i>				
1	Resident Magistrate	400	0	0	
2	Clerk	250	0	0	
3	Bailiff	150	0	0	
4	Clerk at Richmond and Spring Grove	90	0	0	
	<i>Collingwood—</i>				
5	Resident Magistrate	50	0	0	
	<i>Motueka—</i>				
6	Clerk to Magistrates	30	0	0	
	<i>Amuri—</i>				
7	Clerk to Magistrates	50	0	0	
	TOTAL—VOTE 121—NELSON				1,020 0 0
	<i>Blenheim and Picton—</i>				
1	Resident Magistrate	250	0	0	
2	Clerk at Blenheim	100	0	0	
3	Clerk at Picton	100	0	0	
	<i>Kaikouras—</i>				
4	Resident Magistrate	50	0	0	
5	Clerk	20	0	0	
	TOTAL—VOTE 122—MARLBOROUGH				520 0 0
	<i>Christchurch and Leeston—</i>				
1	Resident Magistrate	600	0	0	
2	Forage Allowance	54	12	0	
3	Clerk	300	0	0	
4	Clerk	160	0	0	
5	Bailiff	175	0	0	
6	Assistant Bailiff	146	0	0	
7	Messenger and Office Cleaner	50	0	0	
8	Rent of Office	125	0	0	
	<i>Lyttelton—</i>				
9	Resident Magistrate	300	0	0	
10	Clerk	150	0	0	
11	Bailiff				Fees (including poundage).
12	Rent of Office	80	0	0	
	Carried forward	2,140	12	0	19,048 12 0

CLASS III.—LAW AND JUSTICE—*continued.*

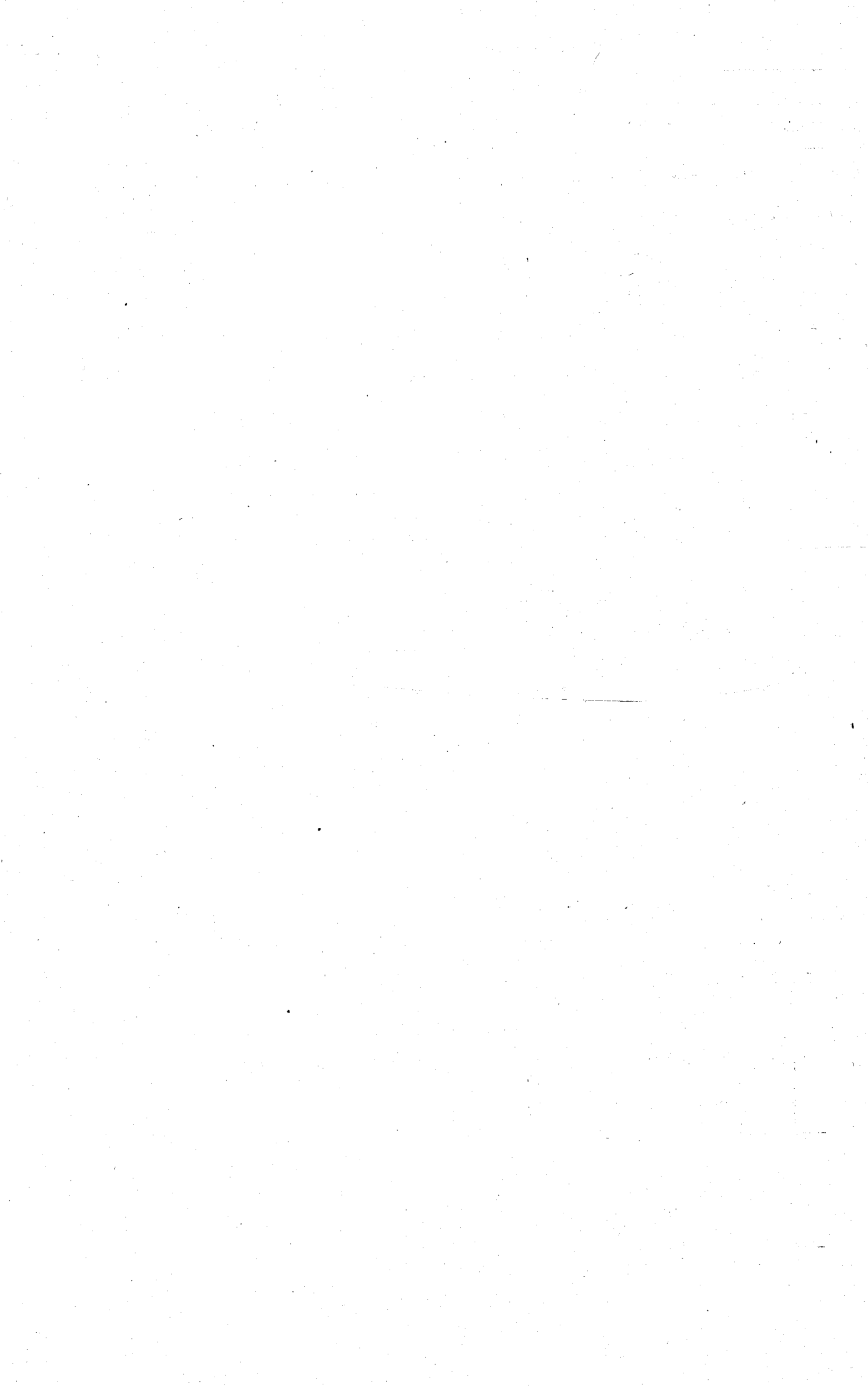
Item.	1869-70.	
	£ s. d.	£ s. d.
Provincial Charges—<i>continued.</i>		
Brought forward	2,140 12 0	19,048 12 0
RESIDENT MAGISTRATES' COURTS—<i>continued.</i>		
<i>Kaiapoi, Rangiora, Leithfield, and Oxford—</i>		
13 Resident Magistrate	300 0 0	
14 Forage Allowance	50 0 0	
15 Clerk at Kaiapoi	150 0 0	
16 Bailiff	Fees.	
17 Clerk at Rangiora and Leithfield	50 0 0	
18 Clerk and Bailiff at Oxford	Bailiff's Fees.	
<i>Akaroa, Pigeon Bay, and Okains Bay—</i>		
19 Resident Magistrate	275 0 0	
20 Travelling Allowance	50 0 0	
21 Clerk and Bailiff	100 0 0	
<i>Timaru, Waimate, and Arowhenua—</i>		
22 Resident Magistrate	200 0 0	
23 Forage	75 0 0	
24 Clerk and Bailiff	175 0 0	
25 Travelling Expenses of Clerk	50 0 0	
26 Clerk and Bailiff at Waimate	50 0 0	
27 Bailiff at Arowhenua	and Bailiff's fees. Fees.	
TOTAL—VOTE 123—CANTERBURY		3,665 12 0
<i>Westland—</i>		
1 Resident Magistrate, Hokitika	500 0 0	
2 Clerk (Salary and Gold Field Allowance)	360 0 0	
3 Clerk	200 0 0	
4 Bailiff (Salary and Gold Field Allowance)	204 0 0	
5 Assistant ditto ditto	180 0 0	
6 Messenger	52 0 0	
<i>Other Resident Magistrates' Courts in Westland—</i>		
7 Bailiffs	400 0 0	
8 Bailiffs at Hokitika and Greymouth	60 0 0	
TOTAL—VOTE 124—WESTLAND		1,956 0 0
<i>Dunedin—</i>		
1 Resident Magistrate	700 0 0	
2 Chief Clerk	350 0 0	
3 Clerk	275 0 0	
4 Clerk	220 0 0	
5 Bailiff	200 0 0	
6 Assistant Bailiff	150 0 0	
7 Office Cleaner	39 0 0	
<i>Port Chalmers and West Taieri—</i>		
8 Resident Magistrate, also Assistant Magistrate at Dunedin	470 0 0	
9 Clerk and Bailiff at Port Chalmers	200 0 0	
<i>Oamaru and Hampden—</i>		
10 Resident Magistrate	250 0 0	
11 Clerk (also Clerk to Petty Sessions)	150 0 0	
12 Bailiff	150 0 0	
<i>Tokomairiro, Woolshed, and Molyneux—</i>		
13 Resident Magistrate	350 0 0	
14 Forage	100 0 0	
15 Clerk and Bailiff at Tokomairiro	150 0 0	
16 Clerk at Molyneux	25 0 0	
<i>Hawksbury and Palmerston—</i>		
17 Resident Magistrate	350 0 0	
18 Clerk and Bailiff	100 0 0	
TOTAL—VOTE 125—OTAGO		4,229 0 0
Carried forward		28,899 4 0

CLASS III.—LAW AND JUSTICE—*continued.*

Item.			1869-70.					
			£ s. d.			£ s. d.		
Provincial Charges—<i>continued.</i>								
	Brought forward			28,899 4 0		
RESIDENT MAGISTRATES' COURTS—<i>continued.</i>								
<i>Invercargill and Campbelltown—</i>								
1	Resident Magistrate		400	0	0			
2	Clerk		225	0	0			
3	Bailiff		50	0	0			
4	Office Cleaner		10	0	0			
<i>Riverton—</i>								
5	Resident Magistrate		25	0	0			
6	Clerk and Bailiff		Fees.					
	TOTAL—VOTE 126—SOUTHLAND					710 0 0		
1	CONTINGENCIES for the above Departments		1,200 0 0					
	TOTAL—VOTE 127—CONTINGENCIES					1,200 0 0		
	TOTAL—RESIDENT MAGISTRATES' COURTS		21,618 4 0					
	PETTY SESSIONS COURTS		400 0 0					
	TOTAL—VOTE 128—PETTY SESSIONS COURTS					400 0 0		
	CRIMINAL PROSECUTIONS		6,000 0 0					
	TOTAL—VOTE 129—CRIMINAL PROSECUTIONS					6,000 0 0		
CORONERS, ETC.—								
1	Fees and Expenses on Inquests		1,800	0	0			
2	Fees to Medical Witnesses under "Lunatics Act, 1868"		400	0	0			
	TOTAL—VOTE 130—CORONERS, ETC.					2,200 0 0		
LAND AND DEEDS REGISTRY—								
<i>Auckland—</i>								
1	Registrar of Deeds and District Registrar of Land		500	0	0			
2	Acting Registrar of Deeds		200	0	0			
3	Deputy Registrar of Deeds		300	0	0			
4	Clerk		200	0	0			
5	Clerk		180	0	0			
6	Clerk		180	0	0			
7	Draughtsman		156	0	0			
8	Clerk to District Registrar of Land		150	0	0			
9	Messenger		30	0	0			
10	Clerical Assistance		120	0	0			
	TOTAL—VOTE 131—AUCKLAND					2,016 0 0		
<i>Taranaki—</i>								
1	Registrar		200	0	0			
2	Clerk		75	0	0			
	TOTAL—VOTE 132—TARANAKI					275 0 0		
<i>Hawke's Bay—</i>								
1	Registrar of Deeds		300	0	0			
2	Clerk		50	0	0			
	TOTAL—VOTE 133—HAWKE'S BAY					350 0 0		
<i>Wellington—</i>								
1	Registrar of Deeds and District Registrar of Lands		500	0	0			
2	Deputy Registrar of Deeds		220	0	0			
3	Clerk		120	0	0			
4	Messenger		36	10	0			
	TOTAL—VOTE 134—WELLINGTON					876 10 0		
	Carried forward			42,926 14 0		

CLASS III.—LAW AND JUSTICE—*continued.*

Item.					1869-70.					
					£	s.	d.	£	s.	d.
Provincial Charges—<i>continued.</i>										
	Brought forward			42,926	14	0
LAND AND DEEDS REGISTRY—<i>continued.</i>										
<i>Nelson—</i>										
1	Registrar of Deeds	100	0	0			
2	Clerk	230	0	0			
3	Clerk	180	0	0			
4	Clerk	120	0	0			
	TOTAL—VOTE 135—NELSON							630	0	0
<i>Marlborough—</i>										
1	Registrar of Deeds	250	0	0			
2	Clerk	100	0	0			
	TOTAL—VOTE 136—MARLBOROUGH							350	0	0
<i>Canterbury—</i>										
1	Registrar of Deeds and District Registrar of Lands	400	0	0			
2	Deputy Registrar	280	0	0			
3	Clerk	220	0	0			
4	Clerk	150	0	0			
5	Clerk	150	0	0			
6	Clerk	135	0	0			
	TOTAL—VOTE 137—CANTERBURY							1,335	0	0
<i>Westland—</i>										
1	Registrar of Deeds, Hokitika	250	0	0			
2	Clerk	125	0	0			
	TOTAL—VOTE 138—WESTLAND							375	0	0
<i>Otago—</i>										
1	Registrar of Deeds and District Registrar of Lands	550	0	0			
2	Deputy Registrar of Deeds	350	0	0			
3	Clerk	225	0	0			
4	Clerk	200	0	0			
	TOTAL—VOTE 139—OTAGO							1,325	0	0
<i>Southland—</i>										
1	Registrar of Deeds	200	0	0			
2	Clerk	150	0	0			
	TOTAL—VOTE 140—SOUTHLAND							350	0	0
1	RENT, CONTINGENCIES, and CONTRACT WORK for the above Departments				2,000	0	0			
	TOTAL—VOTE 141—RENT AND CONTINGENCIES							2,000	0	0
	TOTAL—LAND AND DEEDS REGISTRY				9,882	10	0			
	TOTAL, PROVINCIAL CHARGES			49,291	14	0
GENERAL CHARGES					£6,335	10	0			
PROVINCIAL CHARGES					49,291	14	0			
TOTAL OF CLASS III.					£55,627	4	0			



Class IV.

P O S T A L, & c . , S E R V I C E S .

					1869-70.						
					£ s. d.			£ s. d.			
General Charges—											
General Post Office	3,620	0	0				
Conveyance of Mails by Sea	30,125	0	0				
								33,745	0	0	
Provincial Charges.											
Auckland	7,666	0	0				
Taranaki	400	0	0				
Hawke's Bay	1,647	0	0				
Wellington	4,276	0	0				
Nelson	3,547	0	0				
Marlborough	1,478	0	0				
Canterbury	10,514	0	0				
Westland	5,238	0	0				
Otago	12,284	0	0				
Southland	2,115	0	0				
								49,165	0	0	
General Charges.											
Telegraph Department			19,985	0	0	
PROVINCIAL SERVICES—											
Telegraph Department			24,554	0	0	
GENERAL CHARGES—											
Marine Department			13,815	0	0	
TOTAL OF CLASS IV.					...			141,264	0	0	

AN ESTIMATE of the Sum that will be required in the Year ending 30 June 1870 to defray the Salaries, Expenses, and Contingencies of POSTAL SERVICES and TELEGRAPH and MARINE ENGINEER DEPARTMENTS.

Item.		1869-70.					
		£ s. d.			£ s. d.		
General Charges.							
GENERAL POST OFFICE.							
1	Secretary, General Post Office	600	0	0			
2	Inspector of Post Offices	500	0	0			
3	Controller of Money Orders and Savings Banks	420	0	0			
4	Chief Clerk	300	0	0			
5	Dead Letter Clerk	200	0	0			
6	4 Clerks	740	0	0			
7	Messenger	110	0	0			
8	Commission on Money Orders due to Foreign Post Offices	500	0	0			
9	Contingencies	250	0	0			
TOTAL—VOTE 142—GENERAL POST OFFICE					3,620 0 0		
<i>Conveyance of Mails by Sea—</i>							
1	Contribution to Suez Line	15,000	0	0			
2	2 Travelling Mail Agents between New Zealand and Melbourne	500	0	0			
3	Intercolonial Steam Mail Services—Contracts up to 29th November	4,300	0	0			
	Melbourne to New Zealand, and Sydney to Auckland, including Provincial distribution, seven months	7,000	0	0			
	Interprovincial Service to end of year	5,325	0	0			
	From end of year to 30th June	3,500	0	0			
	Demurrage	500	0	0			
		16,325	0	0			
4	Less	8,000	0	0			
5	Contingencies, Bonus, Gratuities, &c.	2,000	0	0			
TOTAL—VOTE 143—CONVEYANCE OF MAILS BY SEA					30,125 0 0		
TOTAL—GENERAL CHARGES					33,745 0 0		
Provincial Charges.							
PROVINCIAL POSTAL SERVICES.							
AUCKLAND.							
<i>Chief Office—</i>							
1	Chief Postmaster	500	0	0			
2	10 Clerks	1,647	0	0			
3	Letter Carriers	235	0	0			
4	Messenger	100	0	0			
5	Shipping Officer at Onehunga	50	0	0			
<i>Shortland—</i>							
6	Postmaster	175	0	0			
7	2 Clerks	270	0	0			
8	Gold Fields' allowance	89	0	0			
9	New Post Office, Shortland	325	0	0			
10	69 Country Postmasters	775	0	0			
11	Conveyance of Mails	3,000	0	0			
12	Rent of Office	100	0	0			
13	Contingencies	400	0	0			
TOTAL—VOTE 144—AUCKLAND					7,666 0 0		
Carried forward					7,666 0 0		

CLASS IV.—POSTAL SERVICES—*continued.*

Item.			1869-70.					
			£	s.	d.	£	s.	d.
Provincial Charges—<i>continued.</i>								
	Brought forward			7,666	0	0
TARANAKI.								
<i>Chief Office—</i>								
1	Chief Postmaster		50	0	0			
2	Messenger and Letter Carrier		105	0	0			
3	Country Postmaster		15	0	0			
4	Conveyance of Mails		120	0	0			
5	Office Rent		60	0	0			
6	Contingencies		50	0	0			
	TOTAL—VOTE 145—TARANAKI					400	0	0
HAWKE'S BAY.								
<i>Chief Office—</i>								
1	Chief Postmaster		300	0	0			
2	2 Clerks		190	0	0			
3	21 Country Postmasters		157	0	0			
4	Conveyance of Mails		850	0	0			
5	Office Rent							
6	Contingencies		150	0	0			
	TOTAL—VOTE 146—HAWKE'S BAY... ..					1,647	0	0
WELLINGTON.								
<i>Chief Office—</i>								
1	Chief Postmaster		500	0	0			
2	4 Clerks		740	0	0			
3	2 Letter Carriers		200	0	0			
4	Messenger		100	0	0			
<i>Country Postmasters—</i>								
5	1 at £200, Clerk £85 (Wanganui)		285	0	0			
6	24 Country Postmasters		416	0	0			
7	Conveyance of Mails		1,800	0	0			
8	Office Rent (Wanganui)		35	0	0			
9	Contingencies		200	0	0			
	TOTAL—VOTE 147—WELLINGTON					4,276	0	0
NELSON.								
<i>Chief Office—</i>								
1	Chief Postmaster		300	0	0			
2	Clerk		225	0	0			
3	2 Letter Carriers		220	0	0			
4	Postmaster at Westport, £200; Clerk at Westport, £120		320	0	0			
5	Postmaster at Charleston		150	0	0			
6	Gold Fields allowance, 20 per cent. to Officers in Gold Fields		96	0	0			
7	29 Country Postmasters		386	0	0			
8	Conveyance of Mails		1,400	0	0			
9	Gold Fields, additional Posts		150	0	0			
10	Contingencies		300	0	0			
	TOTAL—VOTE 148—NELSON					3,547	0	0
MARLBOROUGH.								
<i>Chief Office—</i>								
1	Chief Postmaster		250	0	0			
2	Clerk		100	0	0			
3	Postmaster at Picton		165	0	0			
4	10 Country Postmasters		113	0	0			
5	Conveyance of Mails		750	0	0			
6	Contingencies		100	0	0			
	TOTAL—VOTE 149—MARLBOROUGH					1,478	0	0
	Carried forward			19,014	0	0

CLASS IV.—POSTAL SERVICES—*continued.*

Item.	Provincial Charges— <i>continued.</i>	1869-70.			
		£	s.	d.	£ s. d.
	Brought forward			19,014 0 0
	CANTERBURY.				
	<i>Chief Office—</i>				
1	Chief Postmaster	500	0	0	
2	8 Clerks	1,215	0	0	
3	4 Letter Carriers	445	0	0	
4	Messenger	100	0	0	
	<i>Lyttelton—</i>				
5	Postmaster	250	0	0	
6	Clerk	130	0	0	
7	Letter Carrier	100	0	0	
	<i>Timaru—</i>				
8	Postmaster	165	0	0	
9	Clerk	110	0	0	
	<i>Kaiapoi—</i>				
10	Postmaster	160	0	0	
11	Letter Carrier	50	0	0	
12	56 Country Postmasters	601	0	0	
13	Conveyance of Mails	6,000	0	0	
14	Rent of Offices	388	0	0	
15	Contingencies	300	0	0	
	TOTAL—VOTE 150—CANTERBURY				10,514 0 0
	WESTLAND.				
1	Postmaster, Hokitika	300	0	0	
2	2 Clerks	310	0	0	
3	Letter Carriers	120	0	0	
4	Gold Fields allowance, 20 per cent.	146	0	0	
5	Postmaster, Greymouth	250	0	0	
6	Clerk	185	0	0	
7	Messenger and Letter Carrier	100	0	0	
8	Gold Fields allowance, 20 per cent.	107	0	0	
9	12 Country Postmasters	170	0	0	
10	Conveyance of Mails	3,200	0	0	
11	Contingencies	250	0	0	
12	Additional Posts	100	0	0	
	TOTAL—VOTE 151—WESTLAND				5,238 0 0
	OTAGO.				
	<i>Chief Office—</i>				
1	Chief Postmaster	500	0	0	
2	11 Clerks	1,980	0	0	
3	4 Letter Carriers at £130 each	520	0	0	
4	Messenger	120	0	0	
	<i>Oamaru—</i>				
5	Postmaster	225	0	0	
6	Clerk	40	0	0	
7	6 Postmasters—at Clyde £200, at Lawrence £200, at Port Chalmers £200, at Tokomairiro £200, at Waikouaiti £114, at Queenstown £150	1,064	0	0	
8	79 Country Postmasters	885	0	0	
9	Conveyance of Mails	6,500	0	0	
10	Moiety of cost of Post and Telegraph Office, Palmerston	150	0	0	
11	Contingencies	300	0	0	
	TOTAL—VOTE 152—OTAGO				12,284 0 0
	SOUTHLAND.				
	<i>Chief Office—</i>				
1	Chief Postmaster	325	0	0	
2	Clerk	100	0	0	
3	Letter Carrier	120	0	0	
	Carried forward	545	0	0	47,050 0 0

CLASS IV.—POSTAL SERVICES—*continued.*

Item.	1869-70.								
	£ s. d.			£ s. d.					
Provincial Charges—<i>continued.</i>									
	Brought forward	545	0	0	47,050	0	0
SOUTHLAND— <i>continued.</i>									
<i>Chief Office—continued.</i>									
4	18 Country Postmasters	170	0	0			
5	Conveyance of Mails	1,250	0	0			
6	Contingencies	150	0	0			
	TOTAL—VOTE 153—SOUTHLAND				2,115	0	0
	TOTAL, PROVINCIAL POSTAL SERVICES				49,165	0	0
General Charges.									
TELEGRAPH DEPARTMENT.									
<i>Head Office—</i>									
1	General Manager	500	0	0			
2	Accountant	325	0	0			
3	4 Clerks, 1 at £200, 1 at £190, 1 at £150, 1 at £140	680	0	0			
4	Electrician	300	0	0			
5	Mechanician	250	0	0			
6	Storekeeper	120	0	0			
<i>White's Bay—</i>									
7	2 Telegraphists, 1 at £200, 1 at £110	310	0	0			
<i>Extension of Lines.</i>									
8	Auckland to Newcastle, 70 miles	2,800	0	0			
9	Shortland Line, 40 miles (distance not correctly known)	2,000	0	0			
10	Purchase of Telegraph Line from Arthur's Pass to Greymouth	1,700	0	0			
11	Continuation of Line to Taupo	7,000	0	0			
12	Wanganui to Patea	2,500	0	0			
13	Christchurch to Akaroa	1,500	0	0			
	TOTAL—VOTE 154—GENERAL CHARGES				19,985	0	0
Provincial Charges.									
<i>Wellington—(Two Stations)—</i>									
1	5 Telegraphists, 1 at £200, 1 at £180, 2 at £125, 1 at £100	730	0	0			
2	Counter Clerk	160	0	0			
3	4 Messengers at £50 each	200	0	0			
<i>Nelson—</i>									
4	2 Telegraphists, 1 at £225, 1 at £100	325	0	0			
5	2 Messengers at £50 each	100	0	0			
<i>Havelock—</i>									
6	Telegraphist (also Postmaster and Collector of Customs £160)	40	0	0			
7	Assistant and Messenger	80	0	0			
<i>Picton—</i>									
8	Telegraphist (also Postmaster £165)	36	0	0			
9	Messenger and Assistant	75	0	0			
<i>Blenheim—</i>									
10	Telegraphist	160	0	0			
11	Messenger and Assistant	50	0	0			
<i>Kaikoras—</i>									
12	Telegraphist (also Postmaster £5)	125	0	0			
<i>Cheviot Hills—(cost of maintenance guaranteed)</i>									
13	Telegraphist	130	0	0			
	Carried forward	2,211	0	0			

CLASS IV.—POSTAL SERVICES—*continued.*

Item.	Provincial Charges— <i>continued.</i>	1869-70.			
		£	s.	d.	£ s. d.
	Brought forward	2,211	0	0	...
	<i>Kaiapoi</i> —				
14	Telegraphist (also Postmaster £160)	36	0	0	
15	Messenger and Assistant	50	0	0	
	<i>Lyttelton</i> —				
16	2 Telegraphists, 1 at £200, 1 at £100	300	0	0	
17	2 Messengers at £50 each	100	0	0	
	<i>Christchurch</i> —				
18	6 Telegraphists, 1 at £250, 1 at £160, 1 at £125, 3 at £100	835	0	0	
19	2 Counter Clerks, 1 at £160, Assistant Clerk, £110	270	0	0	
20	3 Messengers at £50 each	150	0	0	
	<i>Selwyn</i> —(cost of maintenance guaranteed by Provincial Government, Canterbury)				
21	Telegraphist (also Postmaster £25)	110	0	0	
	<i>Temuka</i> —(cost of maintenance guaranteed)				
22	Telegraphist (also Postmaster £10)	110	0	0	
23	Messenger	40	0	0	
	<i>Timaru</i> —				
24	Telegraphist	125	0	0	
25	Messenger	40	0	0	
	<i>Oamaru</i> —				
26	Telegraphist (also Postmaster £225)	36	0	0	
27	Assistant Telegraphist	100	0	0	
28	Messenger	50	0	0	
	<i>Waikouaiti</i> —				
29	Telegraphist (also Postmaster £114)	50	0	0	
30	Messenger	50	0	0	
	<i>Port Chalmers</i> —				
31	2 Telegraphists, 1 at £130, 1 at £100	230	0	0	
32	Messenger	50	0	0	
	<i>Dunedin</i> —				
33	5 Telegraphists, 1 at £275, 1 at £110, 1 at £125, 2 at £100	710	0	0	
34	2 Counter Clerks, 1 at £160, Assistant Clerk, £110	270	0	0	
35	3 Messengers at £50 each	150	0	0	
	<i>Tokomairiro</i> —(£75 guaranteed by Provincial Government, Otago)				
36	Telegraphist	130	0	0	
37	Messenger and Assistant	80	0	0	
	<i>Balclutha</i> —				
38	Telegraphist (also Postmaster £25)	100	0	0	
39	Messenger	50	0	0	
	<i>Invercargill</i> —				
40	Telegraphist	160	0	0	
41	Messenger	50	0	0	
	<i>Bluff</i> —				
42	Telegraphist (also Postmaster £25)	175	0	0	
43	Messenger	50	0	0	
	<i>Bealey</i> —				
44	Telegraphist (also Postmaster without salary, and Meteorologist £25)	200	0	0	
	<i>Hokitika</i> —				
45	3 Telegraphists, 1 at £200, 1 at £100, 1 at £75	375	0	0	
46	Counter Clerk	100	0	0	
47	2 Messengers, at £50 each	100	0	0	
	<i>Greymouth</i> —				
48	2 Telegraphists, 1 at £160, 1 at £100	260	0	0	
49	Messenger	50	0	0	
	<i>Brighton</i> —(cost of maintenance guaranteed by Provincial Government, Nelson)				
50	Telegraphist (also Postmaster £50)	150	0	0	
51	Messenger	50	0	0	
	Carried forward	8,153	0	0	...

CLASS IV.—POSTAL SERVICES—*continued.*

Item.	1869-70.				
	£	s.	d.	£ s. d.	
Provincial Charges—<i>continued.</i>					
	Brought forward	8,153 0 0	...
	<i>Charleston</i> —(cost of maintenance guaranteed by Provincial Government, Nelson)				
52	Telegraphist (also Postmaster £150)	60 0 0	
53	Messenger and Assistant	100 0 0	
	<i>Westport</i> —(cost of maintenance guaranteed by Provincial Government, Nelson)				
54	Telegraphist	160 0 0	
55	Messenger	50 0 0	
	<i>Featherston</i> —(cost of maintenance guaranteed by Provincial Government, Wellington)				
56	Telegraphist (also Postmaster £25)	110 0 0	
	<i>Greytown</i> —				
57	Telegraphist (also Postmaster £30)	130 0 0	
	<i>Masterton</i> —				
58	Telegraphist	110 0 0	
	<i>Castle Point</i> —				
59	Telegraphist (also Postmaster £15)	135 0 0	
	<i>Waipukurau</i> —(cost of maintenance guaranteed)				
60	Telegraphist (also Postmaster)	100 0 0	
	<i>Waipawa</i> —(cost of maintenance guaranteed)				
61	Telegraphist (also Postmaster £10)	110 0 0	
	<i>Napier</i> —				
62	2 Telegraphists, 1 at £200, 1 at £100	300 0 0	
63	2 Messengers, £50 each	100 0 0	
	<i>The Spit</i> —(£100 contributed by residents)				
64	Telegraphist (also Postmaster £25)	110 0 0	
	<i>Auckland</i> —				
65	2 Telegraphists, 1 at £150, 1 at £80	230 0 0	
66	Messenger, at £50	50 0 0	
67	Clerk and Bookkeeper (3 months)	
	<i>Onehunga</i> —(Subsidy £20 per annum)				
68	Telegraphist (also Postmaster £50)	70 0 0	
	<i>Mercer</i> —				
69	Telegraphist (also Postmaster £25)	90 0 0	
	<i>Newcastle</i> —				
70	Telegraphist (also Postmaster £25)	90 0 0	
71	Messenger	46 0 0	
	<i>Hamilton</i> —				
72	Telegraphist (also Postmaster £25)	90 0 0	
	<i>Cambridge</i> —				
73	Telegraphist (also Postmaster £20)	95 0 0	
	<i>Alexandra</i> —				
74	Telegraphist (also Postmaster £25)	90 0 0	
	<i>New Stations</i> —				
75	Telegraphists and Messengers (six months)	1,000 0 0	
	<i>Maintenance and Repairs of Line</i> —				
76	4 Inspectors, 1 at £400, 1 at £350, 2 at £300	1,350 0 0	
77	23 Linemen at £125 each	2,875 0 0	
78	Travelling expenses for Inspectors and Linemen	3,000 0 0	
79	Extra labour and material for repairs	2,000 0 0	
	<i>Miscellaneous</i> —				
80	Office expenses, fuel, lights, travelling expenses for Telegraphists, &c.	1,250 0 0	
81	General contingencies, including new offices	2,500 0 0	
	TOTAL—VOTE 155—PROVINCIAL CHARGES				
					24,554 0 0
	MARINE DEPARTMENT.				
1	Marine Engineer	700 0 0	
2	Inspector of Steamers and Nautical Assessor	375 0 0	
3	Inspector of Steamers and Engineer Surveyor	375 0 0	
4	Clerk and Bookkeeper	125 0 0	
	Carried forward				
					1,575 0 0

CLASS IV.—POSTAL SERVICES—*continued.*

Item.	1869-70.					
	£			s. d.		
	Brought forward	1,575	0 0
	LIGHTHOUSES.					
	2 Lightkeepers at Tiri Tiri	340	0 0
5	Lightkeeper at Nelson	180	0 0
6	2 " Mana	340	0 0
7	2 " Pencarrow	340	0 0
8	2 " Godley	350	0 0
9	2 " Tairoa Head	350	0 0
10	3 " Dog Island	530	0 0
11	2 " Farewell Spit (six months)	170	0 0
12	2 " Cape Campbell (six months)	170	0 0
13	2 " Nugget Point (six months)	170	0 0
14	{ Oil and other Stores for Lighthouses	4,300	0 0
15	{ Travelling Expenses and Contingencies		
					7,240	0 0
	<i>Marine Surveys—</i>					
16	Purchase of Survey Vessel	1,000	0 0
17	Annual outlay (salaries, maintenance of vessel, &c.)	4,000	0 0
					5,000	0 0
	TOTAL—VOTE 156—MARINE DEPARTMENT	13,815	0 0
	GENERAL CHARGES—					
	POSTAL	33,745	0 0
	TELEGRAPH	19,985	0 0
	MARINE	13,815	0 0
					67,545	0 0
	PROVINCIAL CHARGES—					
	POSTAL	49,165	0 0
	TELEGRAPH	24,554	0 0
					73,719	0 0
	TOTAL OF CLASS IV.	141,264	0 0

Class V.

C U S T O M S.

				1869-70.	
				£ s. d.	£ s. d.
GENERAL CHARGES	1,655 0 0	
PROVINCIAL CHARGES	38,428 1 0	
				40,083 1 0	
DISTILLERIES:					
GENERAL CHARGES	600 0 0	
PROVINCIAL CHARGES	900 0 0	
				1,500 0 0	
TOTAL OF CLASS V.	£41,583 1 0

AN ESTIMATE of the Sum that will be required in the Year ending 30 June 1870
to defray the Salaries and Expenses of the CUSTOMS DEPARTMENTS.

Item.		1869-70.					
		£ s. d.			£ s. d.		
General Charges.							
1	Inspector and Secretary (also Collector at Wellington) ...	100	0	0			
2	Chief Clerk ...	275	0	0			
3	Clerk ...	180	0	0			
4	Clerk ...	100	0	0			
5	Contingencies, including travelling allowances and expenses, books, instruments, &c., for the various Custom Houses ...	300	0	0			
6	Passage-money, &c., for removal of Officers ...	300	0	0			
	<i>Chatham Islands—</i>						
7	{ Sub-Collector ...	350	0	0			
8	{ 4 Coastwaiters ...						
8	Contingencies ...	50	0	0			
	TOTAL—VOTE 157—GENERAL CHARGES ...						1,655 0 0
Provincial Charges.							
	AUCKLAND.						
	<i>Auckland—</i>						
1	Collector, also Licensing Officer under Arms Act ...	550	0	0			
2	Landing Surveyor ...	320	0	0			
3	First Clerk ...	280	0	0			
4	Clerk ...	210	0	0			
5	Clerk ...	150	0	0			
6	Clerk ...	140	0	0			
7	Clerk ...	130	0	0			
8	Junior Clerk ...	80	0	0			
9	Warehouse Keeper ...	215	0	0			
10	Landing Waiter ...	225	0	0			
11	Landing Waiter (Gauger) ...	150	0	0			
12	Landing Waiter ...	200	0	0			
13	Landing Waiter ...	160	0	0			
14	Tide Surveyor and Searcher ...	160	0	0			
15	Locker ...	185	0	0			
16	Locker ...	150	0	0			
17	Locker ...	140	0	0			
18	Locker ...	160	0	0			
19	Locker ...	120	0	0			
20	Tidewaiter ...	150	0	0			
21	Messenger ...	120	0	0			
22	Coxswain, 6s. 6d. per diem ...	118	12	6			
23	2 Boatmen, 6s. per diem ...	219	0	0			
24	Extra Tidewaiters ...	300	0	0			
25	Rent of Custom House ...	200	0	0			
	<i>Onehunga—</i>						
26	Sub-Collector ...	200	0	0			
27	2 Boatmen, at 6s. per diem ...	219	0	0			
	<i>Shortland—</i>						
28	{ Coastwaiter ...	240	0	0			
	{ Gold Allowance ...						
29	3 Boatmen, 1 at 6s. 6d. and 2 at 6s. per diem... ..	337	12	6			
	<i>Mongonui—</i>						
30	Sub-Collector ...	150	0	0			
31	Boatman ...	60	0	0			
	<i>Russell—</i>						
32	Collector ...	200	0	0			
	<i>Wangarei—</i>						
33	{ Collector ...	150	0	0			
	{ Clerk ...						
	Carried forward ...	6,389	5	0			...

CLASS V.—CUSTOMS DEPARTMENTS—*continued.*

Item.			1869-70.			
			£ s. d.		£ s. d.	
Provincial Charges—<i>continued.</i>						
	Brought forward		6,389	5	0	...
AUCKLAND—<i>continued.</i>						
34	<i>Whangaroa—</i>	Coastwaiter	75	0	0	
35	<i>Kaipara—</i>	Coastwaiter	130	0	0	
36	<i>Hokianga—</i>	Officer in Charge	150	0	0	
37	<i>Tauranga—</i>	Coastwaiter	50	0	0	
38	<i>Maketu—</i>	Coastwaiter	25	0	0	
39	<i>Port Waikato—</i>	Coastwaiter	25	0	0	
40	<i>Raglan—</i>	Coastwaiter	25	0	0	
41		New Custom House at Russell	400	0	0	
42		Ditto at the Thames	1,000	0	0	
43		Contingencies for Ports in the Province of Auckland	800	0	0	
	TOTAL—VOTE 158—AUCKLAND					9,069 5 0
TARANAKI.						
1	<i>New Plymouth—</i>	Collector, also Licensing Officer under Arms Act	300	0	0	
2		Locker and Messenger	130	0	0	
3		Contingencies	15	0	0	
	TOTAL—VOTE 159—TARANAKI					445 0 0
HAWKE'S BAY.						
1	<i>Napier—</i>	Collector, also Licensing Officer under Arms Act	425	0	0	
2		Landing Waiter	260	0	0	
3		Landing Waiter	140	0	0	
4		Clerk and Warehouse Keeper	160	0	0	
5		Locker	150	0	0	
6		Extra Tidewaiters and Contingencies	75	0	0	
	TOTAL—VOTE 160—HAWKE'S BAY					1,210 0 0
WELLINGTON.						
1	<i>Wellington—</i>	Collector, also Licensing Officer under Arms Act	500	0	0	
2		Landing Surveyor	400	0	0	
3		First Clerk	270	0	0	
4		Clerk	180	0	0	
5		Clerk	180	0	0	
6		Warehouse Keeper	200	0	0	
7		Landing Waiter	250	0	0	
8		Landing Waiter	185	0	0	
9		Landing Waiter	160	0	0	
10		Tide Surveyor and Searcher	185	0	0	
11		Locker	150	0	0	
12		Locker	150	0	0	
13		Locker	135	0	0	
14		Messenger	100	0	0	
15		2 Boatmen, 1 at £125 and 1 at £118 10s.	243	10	0	
16		Extra Tidewaiters	200	0	0	
17	<i>Wanganui—</i>	Collector, also Licensing Officer under Arms Act	320	0	0	
18		Clerk and Landing Waiter	200	0	0	
19		Locker and Messenger	130	0	0	
	Carried forward		4,138	10	0	10,724 5 0

CLASS V.—CUSTOMS DEPARTMENTS—*continued.*

Item.		1869-70.			
		£	s.	d.	£ s. d.
	Provincial Charges—<i>continued.</i>				
	Brought forward	4,138	10	0	10,724 5 0
	WELLINGTON—<i>continued.</i>				
20	Rent	30	0	0	
21	Contingencies for Ports in the Province of Wellington ...	150	0	0	
	TOTAL—VOTE 161—WELLINGTON ...				4,318 10 0
	NELSON.				
	<i>Nelson—</i>				
1	Collector, also Licensing Officer under Arms Act ...	500	0	0	
2	First Clerk and Warehouse Keeper	250	0	0	
3	Clerk	125	0	0	
4	First Landing Waiter	250	0	0	
5	Landing Waiter	200	0	0	
6	Locker	150	0	0	
7	Tidewaiter	140	0	0	
8	Locker and Messenger	120	0	0	
	<i>Collingwood—</i>				
9	Coastwaiter	25	0	0	
	<i>Buller River—</i>				
10	Officer in Charge, and Licensing Officer under Arms Act...	275	0	0	
11	Clerk	150	0	0	
12	Landing Waiter	170	0	0	
13	Locker	150	0	0	
14	Gold allowance, 20 per cent. on fixed salaries...	149	0	0	
	<i>Charleston—</i>				
15	Coastwaiter	50	0	0	
16	Contingencies for Ports in the Province of Nelson ...	200	0	0	
	<i>Greymouth—</i>				
17	Part of cost of Customs Establishment	918	5	0	
	TOTAL—VOTE 162—NELSON...				3,822 5 0
	MARLBOROUGH.				
	<i>Picton—</i>				
1	Collector, also Licensing Officer under Arms Act ...	200	0	0	
	<i>Havelock—</i>				
2	Officer in Charge	140	0	0	
	<i>Mahikipawa—</i>				
3	Coastwaiter	25	0	0	
	<i>Wairau—</i>				
4	Officer in Charge, also Licensing Officer under Arms Act	250	0	0	
5	Clerk and Landing Waiter				
	<i>Kaikoura—</i>				
6	Officer in Charge, also Licensing Officer under Arms Act...	125	0	0	
7	Rent of Custom House	25	0	0	
8	Contingencies for Ports in the Province of Marlborough ...	50	0	0	
	TOTAL—VOTE 163—MARLBOROUGH ...				815 0 0
	CANTERBURY.				
	<i>Lyttelton and Christchurch—</i>				
1	Collector, also Licensing Officer under Arms Act ...	600	0	0	
2	Landing Surveyor	300	0	0	
3	Clerk	170	0	0	
4	Warehouse Keeper	250	0	0	
5	Landing Waiter	220	0	0	
6	Tide Surveyor	200	0	0	
7	Locker	140	0	0	
	Carried forward	1,880	0	0	19,680 0 0

CLASS V.—CUSTOMS DEPARTMENTS—*continued.*

Item.			1869-70.					
			£ s. d.		£ s. d.			
Provincial Charges—<i>continued.</i>								
	Brought forward	...	1,880	0	0	19,680	0	0
CANTERBURY—<i>continued.</i>								
8	Locker	...	125	0	0			
9	Tidewaiter	...	120	0	0			
10	2 Tidewaiters	...	220	0	0			
11	Coxswain	...	138	0	0			
12	Boatman, £126	...	126	0	0			
13	Landing Waiter	...	240	0	0			
14	Landing Waiter	...	240	0	0			
15	Locker	...	150	0	0			
16	Locker	...	150	0	0			
17	Messenger (Boatman transferred from Lyttelton)	...	120	0	0			
<i>Kaiapoi—</i>								
18	Locker	...	50	0	0			
<i>Akaroa—</i>								
19	Sub-Collector, also Licensing Officer under Arms Act	...	240	0	0			
<i>Timaru—</i>								
20	Sub-Collector, also Licensing Officer under Arms Act	...	300	0	0			
21	Clerk and Landing Waiter	...	170	0	0			
22	Messenger	...	24	0	0			
23	Contingencies for Ports in the Province of Canterbury	...	100	0	0			
TOTAL—VOTE 164—CANTERBURY						4,393	0	0
WESTLAND.								
<i>Hokitika—</i>								
1	Collector, also Licensing Officer under Arms Act	...	425	0	0			
2	Clerk	...	225	0	0			
3	Clerk	...	160	0	0			
4	Warehouse Keeper	...	200	0	0			
5	Landing Waiter	...	300	0	0			
6	Landing Waiter	...	250	0	0			
7	Landing Waiter	...	160	0	0			
8	Locker	...	170	0	0			
9	Locker	...	150	0	0			
10	Extra Tidewaiters	...	250	0	0			
11	Messenger and Boatman, at 10s. per working day	...	156	10	0			
12	Gold allowance, 20 per cent. on fixed salaries...	...	408	0	0			
<i>Okarita—</i>								
13	Sub-Collector, also Licensing Officer under Arms Act	...	250	0	0			
	lodging allowance	...	30	0	0			
14	Gold allowance, 20 per cent. on fixed salary	...	50	0	0			
<i>Greymouth—</i>								
	Collector, also Licensing Officer under Arms Act	...	400	0	0			
	Clerk	...	180	0	0			
	Landing Waiter	...	250	0	0			
	Landing Waiter	...	200	0	0			
	Locker	...	170	0	0			
	Tidewaiter			
	Extra Tidewaiters	...	200	0	0			
	Messenger and Boatman, at 10s. per working day	...	156	10	0			
	Gold allowance, 20 per cent. on fixed salaries...	...	280	0	0			
			£1,836	10	0			
15	Less proportion transferred to Nelson	...	918	5	0			
			918	5	0			
16	Contingencies for Ports in the County of Westland	...	150	0	0			
TOTAL—VOTE 165—WESTLAND						4,252	15	0
Carried forward						28,325	15	0

CLASS V.—CUSTOMS DEPARTMENTS—*continued.*

Item.		1869-70.	
		£ s. d.	£ s. d.
	Provincial Charges—<i>continued.</i>		
	Brought forward	28,325 15 0
	OTAGO.		
	<i>Dunedin—</i>		
1	Collector, also Licensing Officer under Arms Act ...	550 0 0	
2	Landing Surveyor	350 0 0	
3	First Clerk	320 0 0	
4	Clerk	300 0 0	
5	Clerk	100 0 0	
6	Warehouse Keeper	265 0 0	
7	Landing Waiter	250 0 0	
8	Landing Waiter	240 0 0	
9	Landing Waiter	215 0 0	
10	Landing Waiter	215 0 0	
11	Landing Waiter	200 0 0	
12	Gauger	300 0 0	
13	Locker	200 0 0	
14	Locker	200 0 0	
15	Locker	200 0 0	
16	Locker	150 0 0	
17	Locker	150 0 0	
18	Locker	140 0 0	
19	Messenger	100 0 0	
	<i>Port Chalmers—</i>		
20	Tide Surveyor	350 0 0	
21	Boatmen—Coxswain, 7s. ; 2 Boatmen, 6s. 6d. each per diem	365 0 0	
22	Extra Tidewaiters	500 0 0	
	<i>Oamaru—</i>		
23	Sub-Collector, also Licensing Officer under Arms Act ...	225 0 0	
24	Landing Waiter	260 0 0	
	For erection of New Custom House	500 0 0	
	<i>Molyneux—</i>		
25	Coastwaiter, also Licensing Officer under Arms Act ...	50 0 0	
26	Contingencies for Ports in the Province of Otago ...	200 0 0	
27	Refund of Duty on materials of Graving Dock ...	107 6 0	
	TOTAL—VOTE 166—OTAGO		7,002 6 0
	SOUTHLAND.		
	<i>Invercargill—</i>		
1	Collector, also Licensing Officer under Arms Act ...	500 0 0	
2	First Clerk and Warehouse Keeper	250 0 0	
3	Clerk	220 0 0	
4	Landing Waiter	
	<i>Bluff Harbour—</i>		
5	Sub-Collector	290 0 0	
	<i>Riverton—</i>		
6	Sub-Collector (six months)	120 0 0	
7	Clerk and Landing Waiter	210 0 0	
8	Contingencies for Ports in the Province of Southland ...	100 0 0	
	TOTAL—VOTE 167—SOUTHLAND		1,850 0 0
1	Salaries and Contingencies for new Ports and Stations ...	1,000 0 0	
2	For Special Services in the protection of the Revenue and for legal expenses	250 0 0	
	TOTAL—VOTE 168—NEW PORTS AND STATIONS		1,250 0 0
	TOTAL PROVINCIAL CHARGES, CUSTOMS		38,428 1 0

CLASS V.—CUSTOMS DEPARTMENTS—*continued.*

Item.		1869-70.					
		£	s.	d.	£	s.	d.
	Provincial Charges—<i>continued.</i>						
	DISTILLERIES.						
	<i>General Charges—</i>						
1	Chief Inspector of Distilleries, also Inspector of Customs	100	0	0			
2	Inspector	300	0	0			
3	Contingencies	200	0	0			
	TOTAL—VOTE 169—GENERAL CHARGES				600	0	0
	<i>Provincial Charges—</i>						
1	Salaries of Inspectors	500	0	0			
2	Rewards for suppression of illicit distillation	400	0	0			
	TOTAL—VOTE 170—PROVINCIAL CHARGES				900	0	0
	GENERAL CHARGES—						
	CUSTOMS	1,655	0	0			
	DISTILLERIES	600	0	0			
					2,255	0	0
	PROVINCIAL CHARGES—						
	CUSTOMS	38,428	1	0			
	DISTILLERIES	900	0	0			
					39,328	1	0
	TOTAL OF CLASS V.				41,583	1	0

Class VI.

N A T I V E .

	1869-70.							
		£	s.	d.		£	s.	d.
General Charges.								
General Contingencies	...	5,000	0	0				
Salaries of European and Native Officers	...	12,407	2	6				
TOTAL, GENERAL CHARGES	...					17,407	2	6
 Provincial Charges.								
Native Lands Court, Survey Department	...	4,000	0	0				
TOTAL, PROVINCIAL CHARGES	...					4,000	0	0
 TOTAL OF CLASS VI.				21,407	2	6

AN ESTIMATE of the Sum that will be required in the Year ending 30 June 1870 to defray the NATIVE EXPENDITURE.

Item.		1869-70.					
		£ s. d.			£ s. d.		
	General Charges.						
	GENERAL CONTINGENCIES—						
1	Food, Clothing, Travelling Expenses, Medical Comforts, &c., in aid of Civil List	5,000	0	0			
	TOTAL—VOTE 171—GENERAL CONTINGENCIES				5,000	0	0
	<i>Auckland—</i>						
1	Native Officer at Thames	450	0	0			
2	Clerk to Native Officer	250	0	0			
3	Hostelry Keeper	70	0	0			
	<i>Mangonui—</i>						
4	Resident Magistrate (besides £100 as Judge of Native Land Court, and £75 Judicial Estimates, and £25 Returning Officer)	300	0	0			
5	Clerk and Interpreter (besides £50 Judicial Estimates)	100	0	0			
6	Assessors, 6 at £20	120	0	0			
7	Police	100	0	0			
	<i>Waimate, Hokianga, and Whangaroa—</i>						
8	Resident Magistrate (besides £50 Judicial Estimates)	350	0	0			
9	Clerk and Interpreter (besides £75 Judicial Estimates)	75	0	0			
10	Assessors, 12 at £20	240	0	0			
11	Police	120	0	0			
	<i>Kororareka—</i>						
12	Assessors, 1 at £90, 1 at £40, 2 at £20	170	0	0			
13	Police	20	0	0			
	<i>Kaipara—</i>						
14	Resident Magistrate (£480 Native Lands Court)	120	0	0			
15	Clerk (£50 Judicial Estimates)	100	0	0			
16	Boatman	127	15	0			
17	Boatmen, occasional assistance	63	17	6			
18	Assessors, 2 at £50, 3 at £25, 2 at £40	255	0	0			
19	Police	50	0	0			
	<i>Hauraki—</i>						
20	Assessors, 1 at £20, 4 at £30, 1 at £50, 1 at £40	230	0	0			
21	Police	55	0	0			
	<i>Waikato—</i>						
22	Clerk and Interpreter (£100 Judicial Estimates)	50	0	0			
23	Assessors, 2 at £50	100	0	0			
24	Police	15	0	0			
	<i>Waikato Districts and Raglan—</i>						
25	Clerk (besides £50 Judicial Estimates)	50	0	0			
26	Assessors, 3 at £20	60	0	0			
27	Police	36	0	0			
28	Assessors (Middle Waikato), 1 at £150, and 1 at £30	180	0	0			
29	Police, Middle Waikato	44	0	0			
30	Assessor, 1 at £40	40	0	0			
31	Police	22	0	0			
	<i>Taupo—</i>						
32	Magistrate	150	0	0			
33	Assessors	140	0	0			
34	Police	60	0	0			
	<i>Raglan—</i>						
35	Clerk and Interpreter (besides £50 Judicial)	100	0	0			
36	Assessors, 1 at £50, and 4 at £20	130	0	0			
37	Police	124	0	0			
	<i>Tauranga—</i>						
38	Clerk (£75 Judicial Estimates)	125	0	0			
39	Assessors, 3 at £30, 1 at £20	110	0	0			
40	Police	96	0	0			
	<i>Maketu—</i>						
41	Resident Magistrate, also Medical Attendant	300	0	0			
42	Assessors, 8 at £30	240	0	0			
43	Clerks, 1 at £30, and 4 at £20	110	0	0			
44	Police	278	0	0			
	Carried forward	5,926	12	6	5,000	0	0

CLASS VI.—NATIVE—*continued.*

Item.	1869-70.		
	£ s. d.	£ s. d.	
General Charges—<i>continued.</i>			
	Brought forward	5,926 12 6	5,000 0 0
<i>Opotiki—</i>			
45	Resident Magistrate	350 0 0	
46	Clerk	37 10 0	
47	Assessors, 1 at £26, 1 at £20	46 0 0	
48	Police	40 0 0	
<i>Waiapu—</i>			
49	Resident Magistrate	400 0 0	
<i>Poverty Bay—</i>			
50	Resident Magistrate	400 0 0	
51	Clerk	150 0 0	
52	Assessors	360 0 0	
53	Police	72 0 0	
<i>New Plymouth—</i>			
54	Clerk to Civil Commissioner	170 0 0	
55	Interpreter	150 0 0	
56	Assessors, 2 at £100, 1 at £60, 2 at 50, 3 at £30	450 0 0	
57	Police	216 0 0	
<i>Napier—</i>			
58	Interpreter	300 0 0	
<i>Waipukurau and Ngaruroro—</i>			
59	Assessors, 3 at £30	90 0 0	
60	Police	30 0 0	
<i>Wairoa—</i>			
61	Resident Magistrate (£200 Judicial Estimates)	150 0 0	
62	Assessors, 2 at £50, 1 at £30	130 0 0	
63	Police	40 0 0	
<i>Wellington—</i>			
64	Hostelry Keeper	100 0 0	
65	Assessor	50 0 0	
<i>Wairarapa—</i>			
66	Assessors, 4 at £50	200 0 0	
67	Police	30 0 0	
<i>Otaki and Rangitikei—</i>			
68	Resident Magistrate	100 0 0	
69	Clerk	150 0 0	
70	Assessors, 1 at £50, and 1 at £40	90 0 0	
71	Police	90 0 0	
<i>Whanganui—</i>			
72	Assessors, 1 at £37, 1 at £62, 4 at £50, 1 at £75, and 1 at £40	414 0 0	
73	Police	60 0 0	
<i>Upper Whanganui, Patea, and West Coast—</i>			
74	Resident Magistrate	350 0 0	
75	Assessors, 1 at £40, 1 at £42, 1 at £37, 1 at £35, 1 at £30, and 1 at £50	234 0 0	
76	Police	36 0 0	
77	Boatman	50 0 0	
<i>Nelson—</i>			
78	Commissioner Native Reserves, and Resident Magistrate for Natives (£100 from Native Reserves)	300 0 0	
<i>Christchurch—</i>			
79	Interpreter	150 0 0	
80	Assessors, 2 at £20, and 1 at £40	80 0 0	
<i>Dunedin—</i>			
81	Interpreter	100 0 0	
82	Assessors	40 0 0	
<i>Southland—</i>			
83	Assessors, 2 at £20, and 1 at £50	90 0 0	
<i>Chatham Islands—</i>			
84	Resident Magistrate (£200 from Customs, and £50 Judicial Estimates)	75 0 0	
	Carried forward	12,297 2 6	5,000 0 0

CLASS VI.—NATIVE—*continued.*

Item.					1869-70.					
					£	s.	d.	£	s.	d.
	General Charges.									
		Brought forward	12,297	2	6	5,000	0	0
85										
86		Clerk	62	10	0			
87		European Constable	25	0	0			
88		Assessor	12	10	0			
		Police	10	0	0			
		TOTAL—VOTE 172—SALARIES OF OFFICERS				12,407	2	6
		TOTAL, GENERAL CHARGES				17,407	2	6
	Provincial Charges.									
1		<i>Native Lands Court—</i>								
		Survey Department	4,000	0	0			
		TOTAL—VOTE 173—NATIVE LANDS COURT				4,000	0	0
		TOTAL, PROVINCIAL CHARGES				4,000	0	0
		GENERAL CHARGES	£17,407	2	6			
		PROVINCIAL CHARGES				4,000	0	0
		TOTAL OF CLASS VI.	£21,407	2	6			

Class VII.

MISCELLANEOUS, SPECIAL, AND TEMPORARY OBJECTS.

	1869-70.			
	£	s.	d.	£ s. d.
General Charges.				
Miscellaneous and Temporary Objects	37,019	12	10	
Bank Commission, &c.	3,500	0	0	
TOTAL, GENERAL CHARGES				40,519 12 10
Provincial Charges.				
Advances to Native Lands Courts	6,700	0	0	
Advance, Province of Wellington	15,000	0	0	
TOTAL, PROVINCIAL CHARGES				21,700 0 0
Unapportioned.				
Expenditure, New Gold Fields	3,000	0	0	
Roads in North Island	30,000	0	0	
Advances to Settlers in Patea and Waitotara Districts	10,000	0	0	
TOTAL, UNAPPORTIONED				43,000 0 0
TOTAL OF CLASS VII.				105,219 12 10

MISCELLANEOUS, SPECIAL, AND TEMPORARY OBJECTS.

AN ESTIMATE of the Sum that will be required in the Year ending 30 June 1870 to defray the Charges of MISCELLANEOUS, SPECIAL, and TEMPORARY OBJECTS.

Item.			1869-70.			
			£	s. d.	£	s. d.
General Charges.						
1	Reception of H.R.H. the Duke of Edinburgh	...	1,300	0 0		
2	Travelling Expenses of Governor and Suite	...	600	0 0		
3	Colonial Agent in London	...	600	0 0		
4	Dictionary (English and Maori)	...	100	0 0		
5	Stationery, including Printing Paper...	...	10,000	0 0		
6	Printing	...	1,700	0 0		
7	Insurances	...	300	0 0		
8	General Contingencies	...	5,000	0 0		
9	Land Claims Commissioner	...	100	0 0		
10	Expenses under Enquiries into Wrecks Act	...	100	0 0		
11	Clerical Assistance to Resident Agent of Government at Auckland	...	200	0 0		
12	Clerks to Resident Agent of Government at Hawke's Bay	...	250	0 0		
13	Rent of Government Offices	...	1,000	0 0		
14	Pension to H. Deery	...	26	0 0		
15	Rent of Residences for Ministers	...	600	0 0		
16	Furniture for Government House	...	200	0 0		
17	Collecting and Compiling Agricultural and Statistical Returns	...	1,500	0 0		
18	Depot at the Auckland Islands	...	200	0 0		
19	Payment to Agent for services connected with Consolidation of Loans	...	3,000	0 0		
20	Expenses of Flax Commission	...	400	0 0		
21	Costs of Arbitration, J. Busby's Land Claims	...	380	0 0		
	Compensation for Losses through escape of Prisoners, Chatham Islands—					
22	Money of private individuals in Government safe	£234 8 8				
23	Claims for Compensation	2,068 6 8				
24	Expenses of Commission	50 0 0				
			2,352	15 4		
25	Purchase of Land for Government Domain	...	1,100	0 0		
26	Expenses caused by Small-pox brought by s.s. "Ruahine"	...	320	0 0		
27	Rent of Sir C. Clifford's house	...	150	0 0		
28	Payment to Province of Taranaki	...	2,000	0 0		
29	Payment to Province of Marlborough	...	3,000	0 0		
30	Maori Lexicon	...	200	0 0		
	<i>Pensions—</i>					
31	James Callaghan	£22 17 6				
32	Mrs. E. Hewett	50 0 0				
33	Mrs. Meredith	74 0 0				
34	Mrs. Hamlin	50 0 0				
35	D. Munro	18 0 0				
36	Mrs. Broughton	126 0 0				
			340	17 6		
	TOTAL—VOTE 174—MISCELLANEOUS	...			37,019	12 10
1	Bank Commission	...	3,500	0 0		
	TOTAL—VOTE 175—BANK COMMISSION	...			3,500	0 0
	TOTAL, GENERAL CHARGES	...			40,519	12 10
Provincial Charges.						
1	Advances to Native Lands Courts	...	6,700	0 0		
	TOTAL—VOTE 176—ADVANCE TO NATIVE LANDS COURTS	...			6,700	0 0
	Carried forward	...			6,700	0 0

CLASS VII.—MISCELLANEOUS, SPECIAL, AND TEMPORARY OBJECTS—*continued.*

Item.	1869-70.			
	£ s. d.		£ s. d.	
Provincial Charges—<i>continued.</i>				
	Brought forward	6,700 0 0
1	Advance, Province of Wellington (to be repaid in seven years)	15,000	0 0	
	TOTAL—VOTE 177—ADVANCE, PROVINCE OF WELLINGTON			15,000 0 0
	TOTAL—PROVINCIAL CHARGES			21,700 0 0
Unapportioned.				
1	Advance for Expenditure in Gold Fields that may be discovered in Native Land (to be repaid out of Gold Fields Revenue)	3,000	0 0	
2	Roads in North Island converging on Taupo (charge for same to be adjusted next Session)	30,000	0 0	
3	Advances to Settlers in Patea and Waitotara Districts	10,000	0 0	
	TOTAL—VOTE 177A—UNAPPORTIONED...			43,000 0 0
	GENERAL CHARGES	£40,519	12 10	
	PROVINCIAL CHARGES	21,700	0 0	
	UNAPPORTIONED	43,000	0 0	
	TOTAL OF CLASS VII.	£105,219	12 10	



Class VIII.

MILITIA, VOLUNTEERS, AND ARMED CONSTABULARY.

					1869-70.						
					£ s. d.			£ s. d.			
General Charges.											
DEFENCE OFFICE	1,690	10	0				
STORE DEPARTMENT	3,180	0	0				
MISCELLANEOUS	7,100	0	0				
CONFISCATED LANDS	3,000	0	0				
								14,970	10	0	
Provincial Charges.											
Auckland	4,121	11	8				
Taranaki	676	15	0				
Hawke's Bay	878	15	0				
Wellington	3,867	7	6				
Nelson	1,216	0	0				
Canterbury	1,683	5	0				
Otago	2,075	5	0				
Southland	359	5	0				
Westland	951	0	0				
								15,829	4	2	
General Charges.											
ARMED CONSTABULARY			118,000	0	0	
CONTINGENT DEFENCE			82,000	0	0	
TOTAL OF CLASS VIII.					...			230,799	14	2	

AN ESTIMATE of the Sum that will be required in the Year ending 30 June, 1870, to defray the Charges of MILITIA, VOLUNTEERS, and ARMED CONSTABULARY.

Item.		1869-70.			
		£	s.	d.	£ s. d.
General Charges.					
DEFENCE OFFICE—					
1	Accountant	260	0	0	
2	Chief Clerk	300	0	0	
3	Second „	250	0	0	
4	Third „	185	0	0	
5	Fourth „	185	0	0	
6	{ Draughtsman	200	0	0	
	{ Extra Clerical Assistance				
7	Messenger	109	10	0	
8	Rent	151	0	0	
9	Contingencies	50	0	0	
	TOTAL—VOTE 178—DEFENCE OFFICE				1,690 10 0
STORE DEPARTMENT—					
1	Inspector of Stores	500	0	0	
2	Clerk	150	0	0	
3	Storekeeper, Auckland	250	0	0	
4	„ Wellington	100	0	0	
5	„ Wanganui	100	0	0	
6	Two Clerks, Auckland	320	0	0	
7	One „ Wellington	150	0	0	
8	One „ Wanganui	130	0	0	
9	Armourer, Auckland	182	0	0	
10	„ Wellington	182	0	0	
11	Arm Cleaners, Auckland	438	0	0	
12	„ Wellington	438	0	0	
13	Rent, Advertising, and Contingencies	150	0	0	
14	Travelling Expenses of Inspecting Officers	90	0	0	
	TOTAL—VOTE 179—STORE DEPARTMENT				3,180 0 0
MISCELLANEOUS—					
1	Prizes for Rifle Shooting	1,000	0	0	
2	Passages, &c., for Competitors	400	0	0	
3	Pay of Markers, &c.	200	0	0	
4	Purchase of Arms	3,000	0	0	
5	Purchase of Ammunition	1,000	0	0	
6	Carriage and Freight	400	0	0	
7	Insurance	150	0	0	
8	Repair of Arms	100	0	0	
9	Preparing Militia Rolls	100	0	0	
10	Contingencies	750	0	0	
	TOTAL—VOTE 180—MISCELLANEOUS				7,100 0 0
CONFISCATED LANDS—					
	Management and Survey of Confiscated Lands	3,000	0	0	
	TOTAL—VOTE 181—CONFISCATED LANDS				3,000 0 0
	TOTAL—GENERAL CHARGES				14,970 10 0
Provincial Charges.					
AUCKLAND—					
1	Officer Commanding, Waikato	100	0	0	
2	„ „ Tauranga	100	0	0	
3	„ „ Thames	300	0	0	
	Carried forward	500	0	0	

CLASS VIII.—MILITIA, VOLUNTEERS, AND ARMED CONSTABULARY—*continued.*

Item.		1869-70.			
		£	s.	d.	£ s. d.
	Provincial Charges—<i>continued.</i>				
	Brought forward	500	0	0	
	AUCKLAND—<i>continued.</i>				
4	Officer Commanding, Waiuku	300	0	0	
5	" " Wairoa	300	0	0	
6	" " Opotiki	298	1	8	
7	Adjutant, Auckland	150	0	0	
8	Sergeants, "	328	10	0	
9	" " "	328	10	0	
10	Bugler, Auckland	73	0	0	
11	Instructor, Naval Volunteers, Auckland	26	0	0	
12	Forage Allowance, One Sergeant, "	54	15	0	
13	Clerk, Tauranga	109	10	0	
14	" Opotiki	109	10	0	
15	Advertising and Contingencies	50	0	0	
16	Capitation Grant	1,493	15	0	
	TOTAL—VOTE 182—AUCKLAND				4,121 11 8
	TARANAKI—				
1	Adjutant	300	0	0	
2	Sergeant	109	10	0	
3	Bugler	73	0	0	
4	Advertising and Contingencies	16	0	0	
5	Capitation Grant	178	5	0	
	TOTAL—VOTE 183—TARANAKI				676 15 0
	HAWKE'S BAY—				
1	Officer Commanding	100	0	0	
2	Adjutant	300	0	0	
3	Sergeant	109	10	0	
4	Bugler	73	0	0	
5	Rent, Advertising, &c.,	100	0	0	
6	Capitation Grant	196	5	0	
	TOTAL—VOTE 184—HAWKE'S BAY ..				878 15 0
	WELLINGTON—				
1	Officer Commanding, also Adjutant	300	0	0	
2	Sergeants	219	0	0	
3	Bugler and Messenger	109	10	0	
4	Drill Instructor, Artillery	45	12	6	
5	Adjutant, Hutt and Wairarapa	300	0	0	
6	Sergeants	109	10	0	
7	Officer Commanding, Wanganui, also Adjutant	300	0	0	
8	Sergeant, Staff	109	10	0	
9	Bugler and Arm Cleaner	91	5	0	
10	Adjutant, Rangitikei	300	0	0	
11	" Forage Allowance	54	15	0	
12	Sergeant, ditto Forage one horse	163	15	0	
13	Bugler	73	0	0	
14	Forages and Travelling Allowance	219	0	0	
15	Rent, Advertising, &c.	85	0	0	
16	Capitation Grant	1,307	10	0	
	TOTAL—VOTE 185—WELLINGTON				3,867 7 6
	Carried forward				9,544 9 2

CLASS VIII.—MILITIA, VOLUNTEERS, AND ARMED CONSTABULARY—*continued.*

Item.		1869-70.	
		£ s. d.	£ s. d.
	Provincial Charges—<i>continued.</i>		
	Brought forward	9,544 9 2
	NELSON—		
1	Adjutant	300 0 0	
2	Sergeant	109 10 0	
3	Bugler and Arms Cleaner	109 10 0	
4	Forage and Travelling Allowance	109 10 0	
5	Rent, Advertising, &c.	65 0 0	
6	Capitation Grant	522 10 0	
	TOTAL—VOTE 186—NELSON		1,216 0 0
	CANTERBURY—		
1	Officer Commanding	300 0 0	
2	Sergeants	219 0 0	
3	Bugler and Arms Cleaner	91 5 0	
4	Adjutant's Travelling Allowance	54 15 0	
5	Sergeant's ditto	109 10 0	
6	Advertising, &c.	60 0 0	
7	Capitation Grant	848 15 0	
	TOTAL—VOTE 187—CANTERBURY		1,683 5 0
	WESTLAND—		
1	Adjutant	300 0 0	
2	Sergeant, Hokitika	109 10 0	
3	Sergeant, Charleston and Westport	109 10 0	
4	Travelling Allowance	154 15 0	
5	Advertising, &c.	30 0 0	
6	Capitation Grant	347 5 0	
	TOTAL—VOTE 188—WESTLAND		951 0 0
	OTAGO—		
1	Adjutant	300 0 0	
2	Sergeants	328 10 0	
3	Travelling Allowance	154 15 0	
4	Advertising, &c.	75 0 0	
5	Capitation Grant	1,067 0 0	
6	Boats for Volunteer Naval Company, Dunedin	150 0 0	
	TOTAL—VOTE 189—OTAGO		2,075 5 0
	SOUTHLAND—		
1	Sergeant	109 10 0	
2	Travelling Allowance	54 15 0	
3	Advertising, &c.	10 0 0	
4	Capitation Grant	185 0 0	
	TOTAL—VOTE 190—SOUTHLAND		359 5 0
	TOTAL—PROVINCIAL CHARGES	15,829 4 2
1	ARMED CONSTABULARY	118,000 0 0	
	TOTAL—VOTE 191—ARMED CONSTABULARY		118,000 0 0
1	CONTINGENT DEFENCE	82,000 0 0	
	TOTAL—VOTE 192—CONTINGENT DEFENCE		82,000 0 0
	GENERAL CHARGES	£214,970 10 0	
	PROVINCIAL CHARGES	15,829 4 2	
	TOTAL OF CLASS VIII.	£230,799 14 2	